

CRYSTORAMA

1958

95 Cantiague Rock Raod , Westbury NY 11590

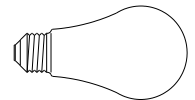
ph: 516.931.9090 fax: 516.931.1254

info@crystorama.com • www.crystorama.com

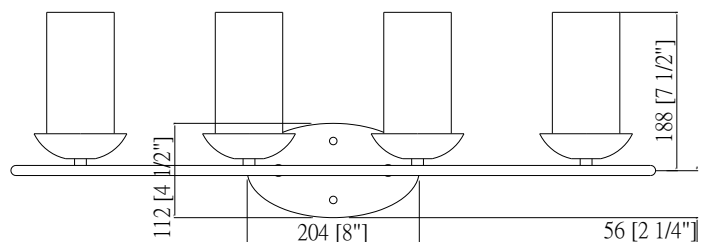
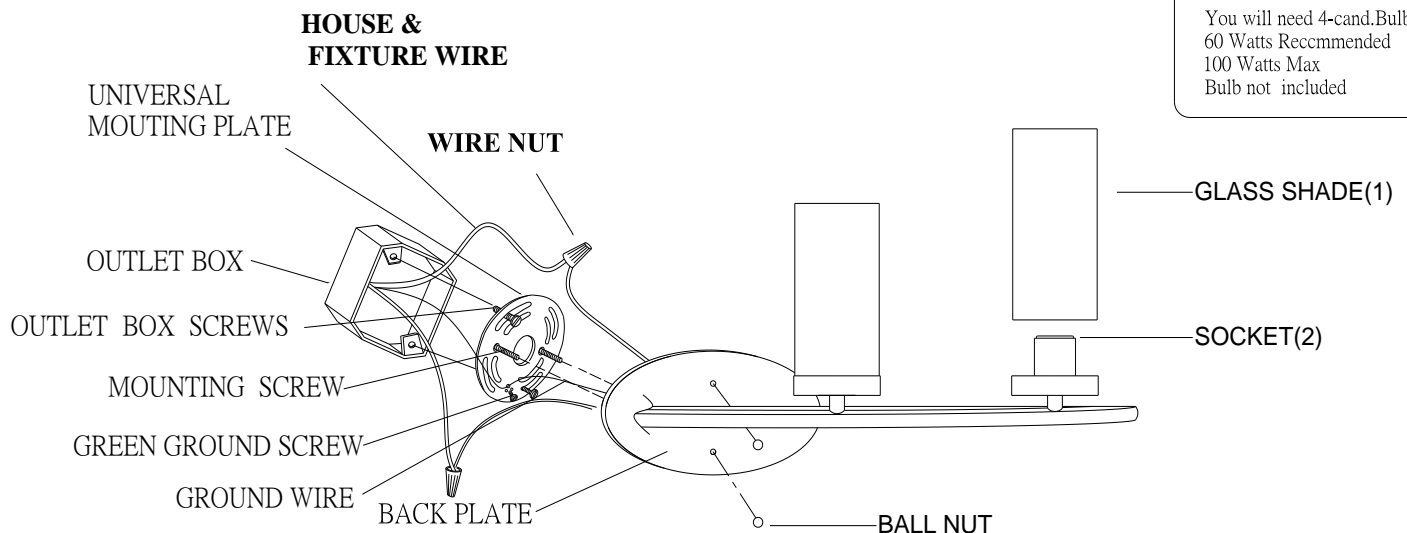
MODEL#: 9264-EB ASSEMBLY AND DRESSING INSTRUCTIONS



All electrical components must be installed by a licensed electrician in accordance with the National Electric Code and the appropriate local electrical codes.



You will need 4-cand.Bulb
60 Watts Reccomended
100 Watts Max
Bulb not included



FIXTURE ASSEMBLY, MOUNTING, AND WIRING INSTRUCTIONS:

1. Carefully remove the fixture out of the carton and check that all parts are included, referring to the above illustration. Make sure that the electricity is turned off.
2. Thread 2 Mounting screws properly into the relevant mounting holes pre-drilled on the Mounting plate;
3. Attach the mounting plate to outlet box using 2 Outlet box screws upwards;
4. Make wire connections:
 - Attach ground wire to house ground wire using a wire nut (or attach them to the cross bar with a green ground screw).
 - Attach ribbed wire from light to white wire from power source with a wire nut.
 - Attach smooth wire from light to black wire from power source with a wire nut.
5. Tuck the wire connection neatly into the outlet box;
6. Place the back plate over the outlet box and let 2 mounting screws protrude through the mounting holes on the back plate well; then lock it in place by ball nuts;
7. Turn power on at fuse or circuit box.
8. Install the glass shade(1) onto socket(2);
9. The fixture is ready for lamping and installation!