

**LED**  
LIGHTING BY **EGLO**

See the world  
in a different  
light.

Experience the most slender  
seduction since the invention  
of lighting.



# A slim line through and through!

## **Enjoy the lighting of the future – today**

Do you love aesthetic design? Are you interested in forward-looking technology? EGLO's new LED lamps and bulbs offer the technology of the future – here and now. After decades of development, LED lighting technology has finally found its way into the home. Up to now, LEDs (light-emitting diodes) have been known from their use in the displays of mobile phones and espresso machines, but it is now the infinite range of applications and product designs offered by this technology that people are getting excited about.

## **LED – light for mankind and nature**

The environment will also thank you for using LEDs since they are free from harmful substances such as mercury. And, of course, the cuts in energy consumption are as environmentally friendly as they are practical.

## **Innovative illumination from EGLO**

We have been committed to the development of indoor lighting for 40 years and are one of the world's leading lamp manufacturers. We manufacture and sell millions of lamps each year. Our products comply with the strict ENEC 60598 standard, and all our LED lamps are TÜV SÜD certified and satisfy all environmental requirements. Isn't it a great feeling knowing you can trust in our quality!



**RoHS**  
CONFORM





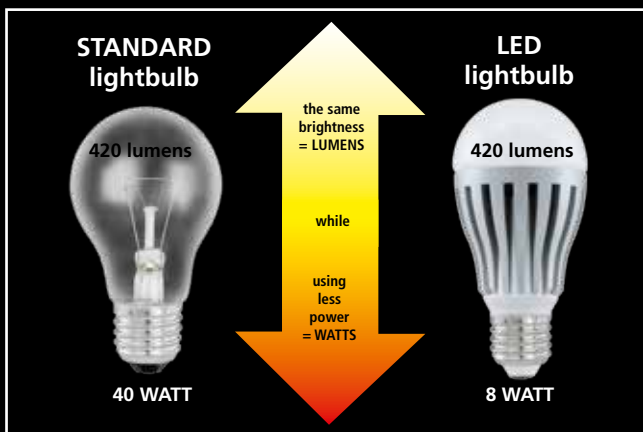
# LED – The king of lights!

It's hardly surprising that LEDs are the current kings of the lighting sector – the advantages are plain to see:

- LEDs use **up to 80% less energy** compared to conventional bulbs and have a lifespan of up to **25 years (= 25,000 operating hours\*)**.
- LEDs are practically **maintenance-free, shock-proof and unaffected** by vibrations.
- With LEDs you don't need to wait for them to start up, which means **full-strength light as soon as they are switched on**.
- LEDs provide **warm, even light** and are available with both colour changers and dimmer switches.

## Something else you should know:

Until now, you've only known the power of your lightbulb in watts. But did you know that this value only represents power consumption and not light output (= lumens)? Compare the efficiency:



\* when used for approx. 3 hours a day





# Enjoy unique light-inspired moods



With remote  
control and colour  
changer

## MYSTERIO

A

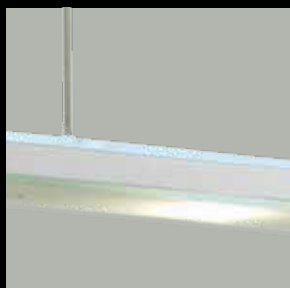
The all-rounder. The colour-changing glass top, the high light intensity and the modern design really demonstrate what LEDs can do. The remote control allows you to create fascinating light-inspired moods from the comfort of your sofa.

L 1070, H 1100

Alu, steel, chrome / satinated glass

6 x 4.76 W; 6.48 W = 1260 lumens

ITEM NO.: 91079 (A)



A



**B C**



**B C**

**D**

## RUFO

**B C**

The most striking design elements of the RUFO are chrome and satinated glass. The integrated LED band ensures your room lighting is perfectly harmonious. The high luminescence and adjustable height underline the quality of this lamp.

L 650, H 1100

Alu, steel, chrome / satinated glass

16.32 W = 333 lumens

ITEM NO.: 90816 **(B)**



L 900, H 1100

Alu, steel, chrome / satinated glass

25.92 W = 529 lumens

ITEM NO.: 90817 **(C)**



## RUFO

**D**

This modern pendant stands out with its straight, creative design. The chrome finish combines with the glass cover to create a distinguished look. The RUFO also impresses with its high light intensity and the fact that it is height-adjustable.

L 1000, H 1100

Alu, steel, chrome, white / satinated glass

37 W = 745 lumens

ITEM NO.: 90913 **(D)**



# Beautifully designed crystal-clear luminance



## TORIO

A B

TORIO is the ideal LED lamp for living and dining rooms and studies. It is height-adjustable, dimmable and, with its round and discreet appearance, fits seamlessly into any interior design. A special LED surface cover ensures a particularly beautiful light distribution.

L 650, H 1100

Alu brushed, steel, chrome / acryl white  
8 x 2.38 W = 960 lumens

ITEM NO.: 90935 (A)



L 900, H 1100

Alu brushed, steel, chrome / acryl white  
10 x 2.38 W = 1200 lumens

ITEM NO.: 90936 (B)



## TIGHT

C D

With a fantastic combination of wooden optic and glass, the TIGHT is all the rage. The creative design of the glass elements provide a unique character and the dimmer creates an individual light-inspired mood.

L 890, W 100, H 1100

Alu, steel, brown antique / satinated glass  
5 x 4.76 W = 1050 lumens

ITEM NO.: 91068 (C)



L 890, W 100, H 1100

Alu, steel, shiny white / satinated glass  
5 x 4.76 W = 1050 lumens

ITEM NO.: 91071 (D)







## CARDITO

E F

A dream in sparkling crystal, the most distinguished of the EGLO LED lamps is a true show-stopper. The flagship model is decorated with glass crystal and has two integrated LED bands. The harmonious and even is enhanced by the stunning elegance of the design. Cardito transforms living and dining rooms into the highlights of the home.

L 700, H 1100

Alu, steel, chrome / glass, crystal  
24.96 W = 510 lumens

ITEM NO.: 90928 **(E)**  
**height adjustable**



L 1000, H 1100

Alu, steel, chrome / glass, crystal  
36.48 W = 745 lumens

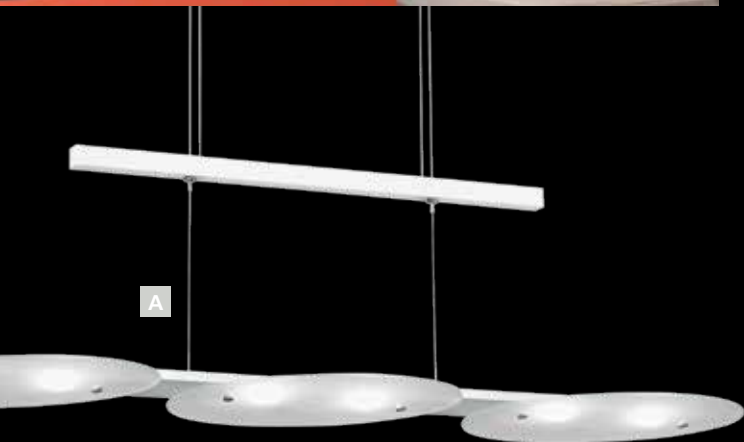
ITEM NO.: 90929 **(F)**



# The art of fine living



A



A

## FELITTO

A

With its wafer-thin oval glass sheets, it hangs ceremoniously in the room. The highly creative accent gives the room a very special character. Alongside its outstanding luminance, the Felitto also features a dimmer.

L 910, W 150, H 1100  
Alu, steel, shiny white / satinated glass  
6 x 4.76 W = 1260 lumens  
ITEM NO.: 91078 **(A)**



## AINA

B

C

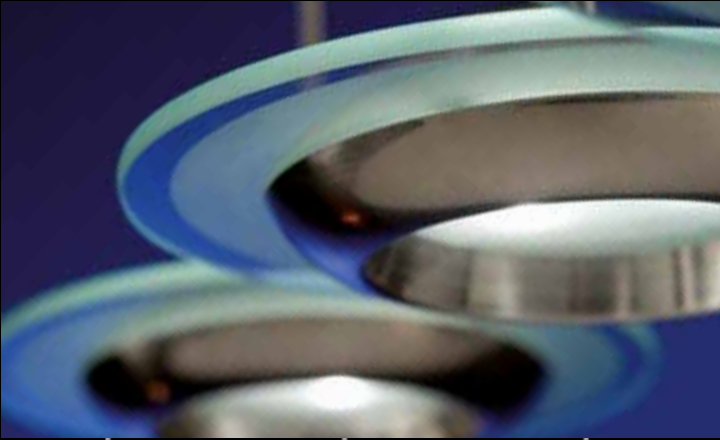
The LED basic! Together with its white glare shield the LED light band of the AINA provides a harmonious and even lighting.

L 750, W 80, H 1100  
Alu, steel, chrome / acryl glass white  
13.44 W = 274 lumens  
ITEM NO.: 90781 **(B)**



L 1000, W 80, H 1100  
Alu, steel, chrome / acryl glass white  
18.24 W = 372 lumens  
ITEM NO.: 90899 **(C)**

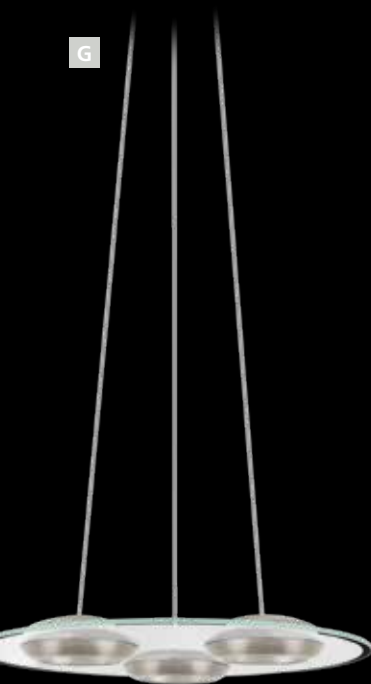




**E** 3-flamed

**F** 4-flamed

**G**



## BOOTES

**D E F G**

Fans of round design will simply love BOOTES. The modern design, combining chrome and glass, is ideal for living, dining and bar areas.

H 1100, Ø 200

Steel, nickel matt / satinated glass

1 x 7.14 W = 350 lumens

ITEM NO.: 90807 **(D)**



L 740, W 200, H 1100

Steel, nickel matt / satinated glass

3 x 7.14 W = 1050 lumens

ITEM NO.: 90808 **(E)**



L 950, W 200, H 1100

Steel, nickel matt / satinated glass

4 x 7.14 W = 1400 lumens

ITEM NO.: 90809 **(F)**



H 1100, Ø 480

Steel, nickel matt / satinated glass

3 x 7.14 W = 1050 lumens

ITEM NO.: 90811 **(G)**



# Aesthetics and functionality in perfect harmony



## SALVO

A B

The straight lighting fixtures and the offset glass elements make its unmistakable. In addition to outstanding luminance, it offers practical features such as a dimmer and height adjustment. The modern aura it creates is particularly enticing.

L 780, H 1100

Alu, steel, shiny white / satinated glass

5 x 4.76 W = 1050 lumens

ITEM NO.: 91076 **(A)**



L 1070, H 1100

Alu, steel, shiny white / satinated glass

7 x 4.76 W = 1470 lumens

ITEM NO.: 91077 **(B)**



## AGOSTA

C

The AGOSTA makes an elegant and, with its black finish, highly distinguished impression. In combination with the green, rounded glass cover, it captivates with extremely thin lines and the high quality of the materials used. Furthermore, it is height-adjustable and dimmable.

L 845, H 1100

Alu, steel, black / satinated glass

5 x 4.76 W = 1050 lumens

ITEM NO.: 91067 **(C)**





## PULSANO

D E

With its soft, round design, it blends harmoniously and discreetly into living rooms. Its straight, puristic design with special wipe glass gives it a special character. Its dimmable light creates an individual light-inspired mood and is also height-adjustable.

L 725, H 1100

Steel, nickel matt / wipe technique glass

8 x 2.38 W = 960 lumens

ITEM NO.: 90933 **(D)**



L 905, H 1100

Steel, nickel matt / wipe technique glass

10 x 2.38 W = 1200 lumens

ITEM NO.: 90934 **(E)**



# Long live the LED!

Parrots are not just particularly colourful, but also have a particularly long life expectancy. There are reports of specimens living to over 70, which is a magnificent age for a bird. **LEDs** are also well-known for their **long lifespan**. Assuming daily use of 3 hours with a lifespan of up to 25 years (= 25,000 hours), 3 bulbs would last a parrot a lifetime!







# The series with countless applications



**A**

with an ON/OFF switch



**B**



- ideal for lighting pictures
- with an ON/OFF switch



**C**



**D**

## ERIDAN

The ERIDAN stands out thanks to its wide range of applications – this series suits every room, situation and lighting requirement and is a must for LED fans. All products in the series include high-quality LED bulbs (with TÜV-SÜD certification) and are available in the colours chrome/white or nickel matt

H 340, B 70

1 x 3 W = 180 lumens

Steel, chrome, shiny white

ITEM NO.: 90831 **(A)**

Steel, nickel matt

ITEM NO.: 90822 **(A, nickel matt)**

L 70, H 200, P 200

1 x 3 W = 180 lumens

Steel, chrome, shiny white

ITEM NO.: 90832 **(B)**

Steel, nickel matt

ITEM NO.: 90823 **(B, nickel matt)**



All lamps on this double page are also available in **nickel matt**! The spotlight heads can be rotated and swivelled in all directions!



**E**

With rotatable rails!

**G** 4-flamed

**H** 6-flamed



360°

**F**



L 390, W 70  
2 x 3 W = 360 lumens  
Steel, chrome, shiny white  
ITEM NO.: 90833 (**C**)  
Steel, nickel matt  
ITEM NO.: 90824 (**C, nickel matt**)

L 580, W 70  
3 x 3 W = 540 lumens  
Steel, chrome, shiny white  
ITEM NO.: 90834 (**D**)  
Steel, nickel matt  
ITEM NO.: 90825 (**D, nickel matt**)

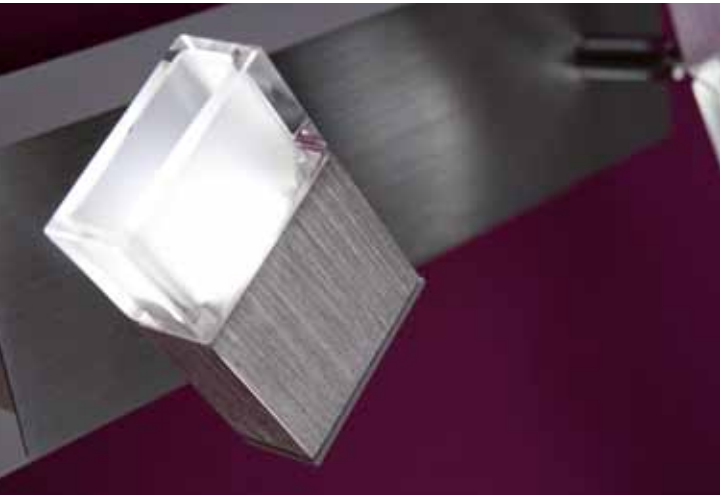
Ø 210  
3 x 3 W = 540 lumens  
Steel, chrome, shiny white  
ITEM NO.: 90837 (**E**)  
Steel, nickel matt  
ITEM NO.: 90828 (**E, nickel matt**)

H 340, Ø 125  
1 x 3 W = 180 lumens  
Steel, chrome, shiny white  
ITEM NO.: 90838 (**F**)  
Steel, nickel matt  
ITEM NO.: 90829 (**F, nickel matt**)

L 885, W 70  
4 x 3 W = 720 lumens  
Steel, chrome, shiny white  
ITEM NO.: 90835 (**G**)  
Steel, nickel matt  
ITEM NO.: 90826 (**G, nickel matt**)

L 1700, W 70  
6 x 3 W = 1080 lumens  
Steel, chrome, shiny white  
ITEM NO.: 90836 (**H**)  
Steel, nickel matt  
ITEM NO.: 90827 (**H, nickel matt**)

# Spot on! Light the way!



GEMINI	A	B	C	D
--------	---	---	---	---

The trademarks of the Gemini spotlight series are an enticing straight-lined design combined with a high-quality and refined acryl mix – satin inside and transparent outside. White shiny decorative frames combined with brushed aluminium also give a modern touch. The spotlights can also be rotated and swivelled.

L 975, W 110  
 Alu brushed, steel, white / satinated glass  
 4 x 4,76 W = 840 lumens  
 ITEM NO.: 90865 **(A)**



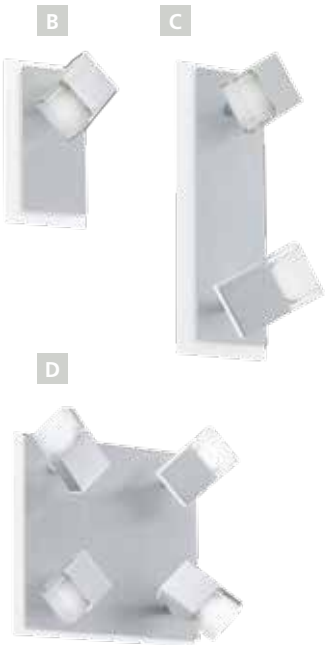
L 160, W 90  
 Alu brushed, steel, white / satinated glass  
 1 x 4.76W = 210 lumens  
 ITEM NO.: 90862 **(B)**



L 270, W 90  
 Alu brushed, steel, white / satinated glass  
 2 x 4.76W = 420 lumens  
 ITEM NO.: 90863 **(C)**



L 230, W 230  
 Alu brushed, steel, white / satinated glass  
 4 x 4.76W = 840 lumens  
 ITEM NO.: 90864 **(D)**





**E**

with an ON/OFF switch



**F**



**G**



**H**

**I**

## ROTELO

**E F G H I**

The ROTTELO is a complete LED spotlight family that allows you to fit out several rooms with the same lighting design. The interesting combination of chrome and nickel matt makes this series a distinguished and versatile option for all home lighting applications.

L 120, W 60

Steel, nickel matt, chrome

1 x 3 W = 180 lumens

ITEM NO.: 90914 **(E)**

L 280, W 70

Steel, nickel matt, chrome

2 x 3 W = 360 lumens

ITEM NO.: 90915 **(F)**

L 260, W 240

Steel, nickel matt, chrome

4 x 3 W = 720 lumens

ITEM NO.: 90916 **(G)**

L 780, W 70

Steel, nickel matt, chrome

4 x 3 W = 720 lumens

ITEM NO.: 90917 **(H)**

L 1160, W 70

Steel, nickel matt, chrome

6 x 3 W = 1080 lumens

ITEM NO.: 90927 **(I)**

**B****A****C****TINNARI****A****B****C**

The spots of the TINNARI series radiate elegance even when they are switched-off. When switched-on they illuminate your living spaces with a balanced and pleasant light. All spots of this modern series are adjustable.

L 120, W 90

Alu, steel, chrome / satinated glass

1 x 7.5 W

ITEM NO.: 91633 **(A)**



L 360, W 90

Alu, steel, chrome / satinated glass

2 x 7.5 W

ITEM NO.: 91634 **(B)**



L 780, W 90

Alu, steel, chrome / satinated glass

4 x 7.5 W

ITEM NO.: 91635 **(C)**





**D****E****F****GLOSSY 1****D****E****F**

The charm of the GLOSSY 1 series results from the interplay of shiny chrom and gracefully corroded glass. The spots of this series are rotatable in all directions and allow an optimum illumination of every room.

Ø 125

Steel, chrome / corroded glass

1 x 4.6 W

ITEM NO.: 91662 **(D)**



L 380, W 140

Steel, chrome / corroded glass

2 x 4.6 W

ITEM NO.: 91663 **(E)**



L 780, W 140

Steel, chrome / corroded glass

4 x 4.6 W

ITEM NO.: 91664 **(F)**



A touch  
of light  
for distinctive  
ambiance



## CELENZA

A

The CELENZA is a modern ceiling lamp that exudes a particular flair. An integrated colour changer, which can easily be operated with a remote control, creates interesting effects on the outer edge of the glass.

Ø 400, P 105

Steel, nickel matt / satinated glass

16 W = 566 lumens

ITEM NO.: 90942 (A)



With remote  
control and colour  
changer



C



B

## TANO

B

The distinguished choice in LED wall lighting. The chrome/glass design captivates with its simple elegance. An LED light band offers harmonious and even lighting.

L 330, H 180, P 60  
Steel, chrome / satinated glass  
120 x 0.1 W = 700 lumens  
ITEM NO.: 90639 **(B)**



## PRIVERO

C

An original, bright LED ceiling lamp with an unmistakable design. The striking rings in a chrome/glass combination give the PRIVERO an extra special touch.

L 950, W 415, H 50  
Steel, chrome / corroded glass  
3 x 12 W = 1680 lumens  
ITEM NO.: 90922 **(C)**



# Save 80% on energy costs

When active, the body temperature of a sloth does not exceed 33°C and sinks to 24°C when it sleeps. It regulates its body temperature by sunbathing and uses this energy efficiently. As its name suggests, the sloth moves as if in slow motion and sleeps almost 16 hours a day. **LEDs** are also true **energy savers**, saving up to around 80% compared to conventional bulbs.





Source: wikipedia / Image: photos.com

# Cutting-edge technology and timeless designs.



## LACERTA 1

A B

This is LED technology at its very best with an impressively slimline design and high output. Thanks to the dimmable main light, it creates an especially individual atmosphere.

L 310, W 210, H 1830

Steel, shiny white, chrome / corroded glass

6 x 4.76 W = 1260 lumens

1 x 4.76 W = 210 lumens

ITEM NO.: 91057 (A)



L 310, W 210, H 1830

Alu brushed, steel, chrome / corroded glass

6 x 4.76 W = 1260 lumens

1 x 4.76 W = 210 lumens

ITEM NO.: 91058 (B)



with an ON/OFF switch

## LIZZANO

C

Straight and confident, Lizzano is here to stay in modern interiors. The extremely slender designer floor lamp has two LED bands for indirect light, with which it creates an unusually harmonious and even lighting atmosphere.

W 205, H 1515

Alu, chrome / plastic, white

30 W

ITEM NO.: 90926 (C)







## LEPORA

D

With its unusually slender cross section, it is a mere wisp of a lamp. This high-quality LED floor lamp with integrated LED light band creates harmoniously and evenly lit rooms. Thanks to its height-adjustable feet, it can be adapted to any floor.

W 205, H 1510

Alu, chrome / satinated glass

30 W = 1102 lumens

ITEM NO.: 90952 (D)



## XANA

E

The XANA combines an adorable design with the highest functionality – and makes every room more appealing. The deliberate mix of steel, chrom and satinated glass turns the lamp into an eye-catcher. This LED floor lamp is also dimmable.

H 1810, Ø 380; Base: Ø 280

Steel, chrome / satinated glass

7 x 4.76 W = 1470 lumens

1 x 4.76 W = 210 lumens

ITEM NO.: 91625 (E)



**B****C****A****D****AGGIUS****A B C D**

The lamps of the AGGIUS series are of timeless elegance. Whether you take a pendant, wall or table lamp – with this design you are always right.

H 1100, Ø 150

Steel, chrome / satinated glass

1 x 6 W = 399 lumens

ITEM NO.: 91545 **(A)**

L 870, H 1100

Steel, chrome / satinated glass

4 x 6 W = 1596 lumens

ITEM NO.: 91546 **(B)**

L 70, H 380, P 110

Steel, chrome / satinated glass

1 x 6 W = 399 lumens

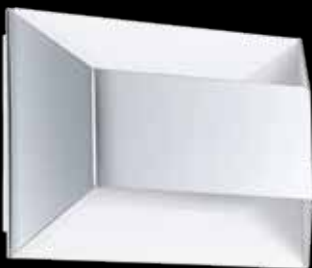
ITEM NO.: 91547 **(C)**

H 420, Ø 120

Steel, chrome / satinated glass

1 x 6 W = 399 lumens

ITEM NO.: 91548 **(D)**



E



F



G

## SANIA 1

E

With the SANIA 1 you are able to provide your living room with a stylish touch. The uniform light distribution completes the overall extraordinary impression.

L 245, H 170, P 85

Steel, chrome, shiny white

3 x 4.76 W = 630 lumens

ITEM NO.: 91348 (E)



## ABIDA

F

G

The innovative art of lighting is the impressive feature of the ABIDA series. The lightbeam that shines upwards and downwards awakes enthusiasm.

L 90, H 160, P 45

Steel, chrome / satinated glass

2 x 4.76 W = 420 lumens

ITEM NO.: 91559 (F)



L 200, H 160, P 45

Steel, chrome / satinated glass

4 x 4.76 W = 840 lumens

ITEM NO.: 91561 (G)



# Light at its most beautiful



## GLOSSY

A B

With its white milk glass, it offers a pleasant, glare-free light. The head can be rotated and swivelled in all directions, and the switch is mounted directly on the lamp for ease of use. With a convenient 1.5 m cable.

L 325, H 410

Steel, chrome / corroded glass

1 x 2.38 W = 120 lumens

ITEM NO.: 90882 (A)

H 370

Steel, chrome / corroded glass

1 x 2.38 W = 120 lumens

ITEM NO.: 90888 (B), clamp spotlight

## LAURIA

C D

A table lamp with a very modern, puristic design. The head can be rotated and swivelled. With a convenient cable length of 1.5 m.

L 250, H 420

Alu, steel, nickel matt

1 x 2.38 W = 120 lumens

ITEM NO.: 90868 (C)

L 250, H 420

Alu, steel, chrome, shiny white

1 x 2.38 W = 120 lumens

ITEM NO.: 90869 (D)



## PAN

E F

The stylish table lamp with very modern lines. Its extremely slender design, which is only possible with LEDs, is a real head-turner. It provides a pleasant working light through the satinated glass cover and can be rotated 360 degrees.

L 450, H 410

Alu, chrome / corroded glass

4.8 W = 98 lumens

ITEM NO.: 90768 (E)

L 450, H 410

Alu brushed / corroded glass

4.8 W = 98 lumens

ITEM NO.: 90769 (F)

## OCASO

G H

The interesting aluminium / glass combination stands out with its elegantly rounded lines. The head can be rotated and swivelled, which enables the lighting to be adapted to every situation. Convenient 1.5 m cable.

L 490, H 435

Alu, steel, chrome / corroded glass

2 x 2.38 W = 210 lumens

ITEM NO.: 90889 (G)

L 515, H 435

Alu, steel, chrome, white / corroded glass

2 x 2.38 W = 210 lumens

ITEM NO.: 90892 (H)

