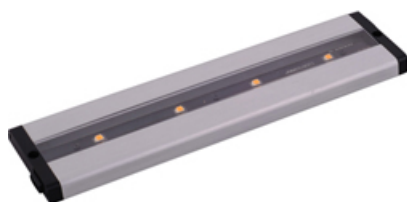




## Product Specifications for E59941-AL

|           |           |
|-----------|-----------|
| Job Name: | Job Type: |
| Quantity: | Comments  |



### E59941-AL

#### CounterMax MX-L-LPC 12" 4-Light LED Under Cabinet

MXInterLink5 technology allows for great flexibility in installation of the CounterMax MX-L-LPC series. Each item in the MX-L-LPC series is sold separately, and the MX-L-LPC under cabinet light will require additional accessories if not being used as an add-on to an existing installation. The MX-L-LPC series features a built-in dimmable driver that can be powered by a corded plug, direct-wire via a direct wire box or by being connected via a connecting cord to another unit. All accessories are sold separately and are available in black or white to better match cabinets and MX-L-LPC finish. Uses MXInterLink5 accessories. Click [here](#) for a complete list of compatible accessories.

#### Finish

Brushed Aluminum

#### Glass/Shade

Clear

#### Product Category

Under Cabinet

#### Lamping

|                            |                                      |
|----------------------------|--------------------------------------|
| Number of Bulb(s)          | 4                                    |
| Light Type                 | LED                                  |
| Bulb Type                  | Cree® LED                            |
| Max Bulb Wattage           | 2.47                                 |
| Max Fixture Wattage        | 9.89                                 |
| Rated Life                 | ±50,000 Hours                        |
| Rated Lumens               | ±461                                 |
| Color Temp                 | ±3,000 K                             |
| Bulb(s) Included           | Integrated                           |
| Light Up/Down              | N/A                                  |
| Beam Spread                | N/A                                  |
| CRI                        | N/A                                  |
| Photo Cell Included        | N/A                                  |
| Ballast/Driver/Transformer | No                                   |
| Dimmable                   | Lutron® or<br>Leviton® LED<br>Dimmer |

#### Measurements

|                    |            |
|--------------------|------------|
| Width              | 3.00"      |
| Height             | 0.55"      |
| Length             | 12.00"     |
| Extension          | N/A        |
| Back Plate Width   | N/A        |
| Back Plate Height  | N/A        |
| HCO                | N/A        |
| Min Overall Height | N/A        |
| Max Overall Height | N/A        |
| Hanging Weight     | 1.10 lb(s) |
| Height Adjustable  | N/A        |
| Slope              | N/A        |
| Chain Length       | N/A        |
| Wire Length        | N/A        |
| Canopy Width       | N/A        |
| Canopy Height      | N/A        |
| Canopy Length      | N/A        |

#### Shipping

|                    |             |
|--------------------|-------------|
| Carton Weight      | 1.50 lb(s)  |
| Carton Width       | 3.94"       |
| Carton Height      | 1.57"       |
| Carton Length      | 14.17"      |
| Carton Cubic Feet  | N/A         |
| Master Pack        | 12          |
| Master Pack Weight | 20.00 lb(s) |
| Master Pack Width  | 13.39"      |
| Master Pack Height | 7.87"       |
| Master Pack Length | 14.96"      |
| Master Cubic Feet  | N/A         |
| UPS Shippable      | Yes         |

#### Certification

|               |     |
|---------------|-----|
| Safety Rating | Dry |
| Energy Star   | No  |
| CA Title 24   | No  |
| CA Title 20   | No  |
| ADA           | No  |

#### Other

|          |              |
|----------|--------------|
| UPC Code | 845094049845 |
| Material | N/A          |

#### Equivalents

|                    |       |
|--------------------|-------|
| Incandescent Watts | 41.91 |
| Fluorescent Watts  | 9.22  |

ET2 Contemporary Lighting and all designs, logos and images © 2014 ET2 Contemporary Lighting. All Rights Reserved. ET2 Contemporary Lighting reserves the right, at any time, to make changes in the design and/or construction of the product including the discontinuation of product without prior notice. Color may vary from what is pictured above due to limitations inherent to photographic processes. Always consult a qualified, licensed electrician before installation of any product weighing 35 pounds or more. We recommend that a qualified, licensed electrician do the installation. Always install to a mechanically sound structure.