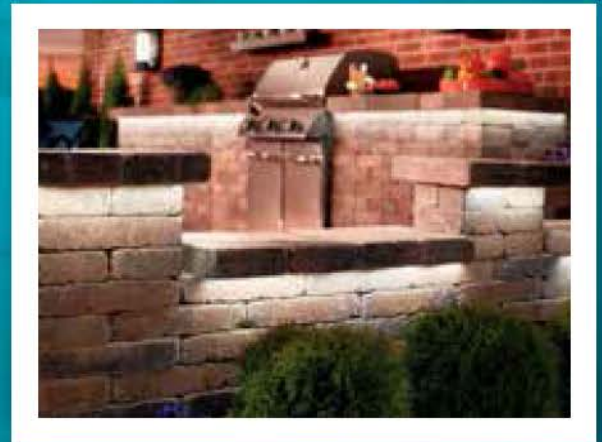


# TaskWork LED Tape Light



INDOOR DRY | INDOOR DAMP | OUTDOOR WET

**KICHLER**   
LIGHTING

# TaskWork LED Tape Light

## 24 Volt DC

The design choices you want, without compromise.

Versatility, beauty and easy installation. With Kichler® TaskWork LED Tape Lighting, you get them all. **Versatile in design**, thanks to **indoor/dry**, **indoor/damp** and **outdoor/wet** product options that offer true **energy efficiency** without compromising quality of light, and high or low output choices that shine brightly without compromising lumens. **Beautiful in color**, thanks to a range of Kelvin temperatures, a high Color Rendering Index and unique colored light options. **Easy to install**, with smart connections and features that streamline placement. In every way, Kichler TaskWork LED Tape Lighting is versatility that delivers beautiful results.

Kichler offers you all the choices...

### Choose Location



Indoor Dry



Indoor Damp



Outdoor Wet



### Choose Light Intensity



Low Output



High Output





Over or Under Cabinet  
(High Output)

Under Counter  
(Low Output)

Under Counter  
(Low Output)

Toe Kick  
(Low Output)

Choose Warm, Pure or Cool White



Warm White



Pure White

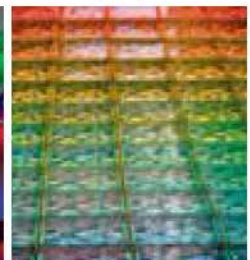


Cool White

Choose Individual Colors Or Color Changing RGB



Red, Green,  
Yellow, Blue



Multi Color

# TaskWork LED Tape Light

## 24 Volt DC

## Beautiful Light...

A light source is only as good as the light it emits – and at Kichler, we've taken the time to get it right. Our **superior Color Rendering Index (CRI)** of 80 means our TaskWork LED Tape Lighting interprets a room's colors more accurately, making cabinet, wall and flooring come alive in their natural tones. We also offer a range of Kelvin color temperature options, helping you customize the warmth of the light to your needs. Choose **Warm White 2,700K** to enhance earth tones, **Pure White 3,000K** for crisp-whites or **Cool White**

**4,000K** for cooler, more contemporary spaces. Each delivers high lumens (light output) for superior brightness.



For Warm Tones,  
choose Warm White  
2700K



For Neutral Tones,  
choose Pure White  
3000K



For Cool Tones,  
choose Cool White  
4000K







**WARM WHITE**  
2700K



**PURE WHITE**  
3000K



**COOL WHITE**  
4000K

## In a Variety of Colors.

Looking to add a little more interest to your space? Consider one of our four color options (red, green, blue and yellow) or our color-changing RGB (red, green and blue) product that can be programmed to many different modes and controlled via infrared remote. They add a little flair in nearly any space.



Available in Red, Green, Blue and Yellow



Color Changing RGB with Remote Control

# TaskWork LED Tape Light

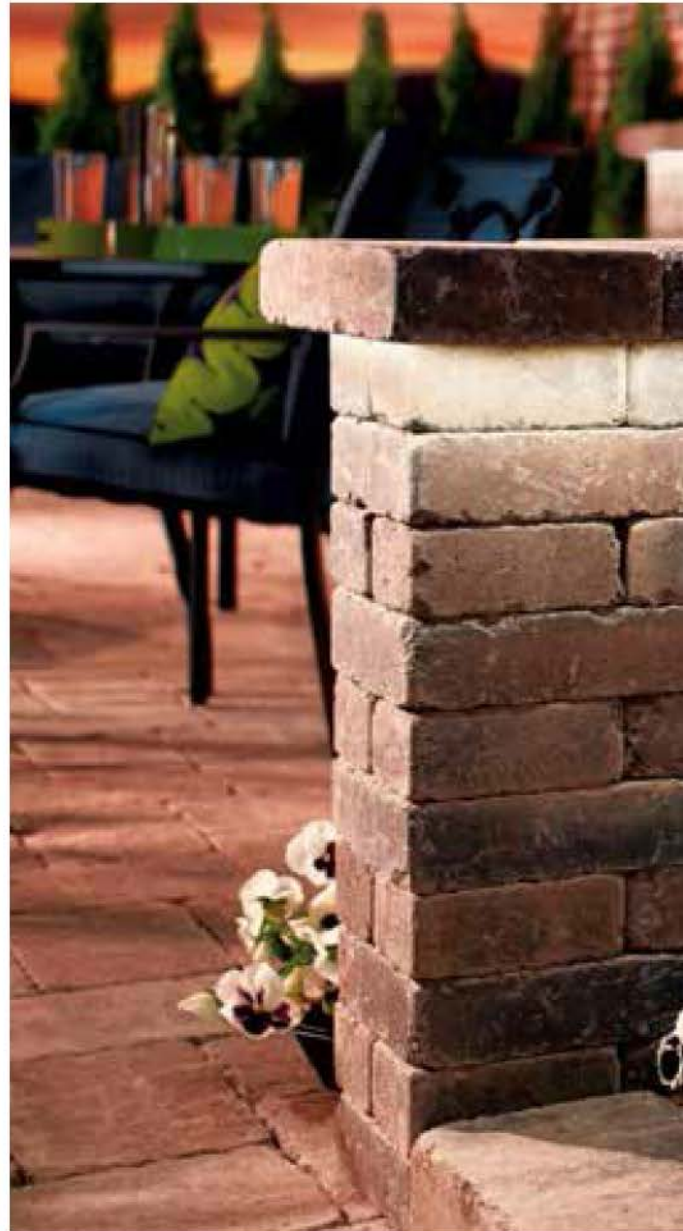
## 24 Volt DC

## Versatile in Design.

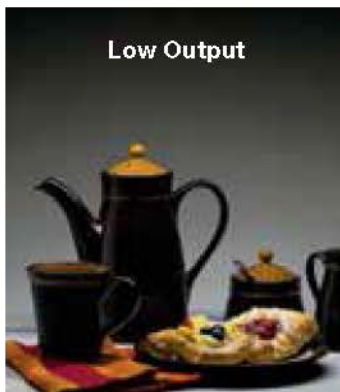
Along a ceiling. Under a bar. Inside a cabinet. The design possibilities inspired our vast selection. Our indoor/dry option lets you add light to **architectural features** in dining areas, home offices, home theaters, game rooms and more. Our indoor/damp features a special silicone covering that **protects the components** from dust and moisture, making it ideal for kitchens, baths, or bar areas. Our outdoor/wet choice (rated IP67) is **completely encased** and **features waterproof connections**, helping you bring lighting interest to decks, patios, pool areas and more.

### Light Intensity

Looking for more versatility? Our **high or low output options** allow you to install the intensity of light that best suits the environment. Consider high output for task lighting. Use the low output version as accent lighting. Each offers the brightness you need, with **superior lumens per foot**: 100 for our low output and 200 for our high. Then add a dimmer switch for even more customization.



### Choose Intensity



Low Output

#### Suggested Uses:

- Toe Kicks
- Under Counter Lip
- Glass Cabinets
- Display Cases
- Architectural Back Lighting
- Anywhere you can Imagine



High Output

#### Suggested Uses:

- Under Cabinets
- Above Cabinets
- Tray Ceilings and Coves
- Crown Molding
- Wall Wash
- Anywhere you can Imagine





**Kichler  
TaskWork LED  
Tape Lighting**  
is engineered to deliver  
**20 Years of Life**  
under normal use

**Choose Location**



**Indoor Dry**

- Home Offices
- Home Theatres
- Game Rooms & More



**Indoor Damp**

- Kitchens
- Baths
- Bar Areas & More



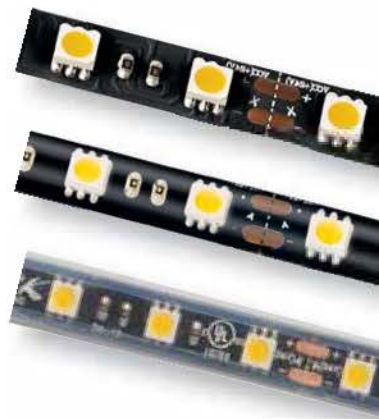
**Outdoor Wet**

- Decks & Patios
- Railings
- Steps & Benches

**Indoor Dry**

**Indoor Damp**

**Outdoor Wet**





# TaskWork LED Tape Light

## 24 Volt DC

## Easy to Install... Anywhere.

- Flexible construction means the tape conforms easily without creasing
- Cut-ready design has marker guides for easy cutoff
- Power supplies enable multiple runs
- Connectors allow you to turn curves or corners with ease

We've designed TaskWork LED Tape Lighting to not only be versatile in design, but also **flexible** at every point in installation. Indoor/dry applications can be easily cut and connected, so you can install jobs without interruption. Order shorter tape light runs where needed for indoor/damp and outdoor/wet projects, then use any of our **versatile watertight connectors**. And, our **3M™ adhesive** backing assures easy peel and stick application that goes on strong and smooth – and stays that way.



### Easily Installs Anywhere You Choose!



Flexible design



Cut-ready design has marker guides for easy cutoff



Indoor damp connectors



Versatile watertight connectors





3M™ adhesive backing assures easy peel-and-stick application



Easy installation



Connectors allow you to turn curves with ease

# TaskWork LED Tape Light

## 24 Volt DC Indoor Dry

### STEP 1

#### SELECT LIGHT

#### a WHITE: SELECT COLOR TEMPERATURE & LUMEN OUTPUT

#### INDOOR DRY FEATURES

- 80 CRI
- Expected life 50,000 hrs
- Tape can be cut every 4" and reconnected
- 3M™ professional grade adhesive backing for an easy peel-and-stick installation
- UL indoor dry location rated
- .4" Width, .1" Height



#### LOW OUTPUT

- 32.8' Max Run Length
- 100 Lumens / Ft.
- 1.45 Watts / Ft.

#### WARM WHITE 2,700K

- 116L27 WH, BK** 16' (24W)
- 1100L27 WH, BK** 100'

#### HIGH OUTPUT

- 20' Max Run Length
- 200 Lumens / Ft.
- 4 Watts / Ft.

#### WARM WHITE 2,700K

- 120H27 WH, BK** 20' (80W)
- 1100H27 WH, BK** 100'



#### PURE WHITE 3,000K

- 116L30 WH, BK** 16' (24W)
- 1100L30 WH, BK** 100'

#### PURE WHITE 3,000K

- 120H30 WH, BK** 20' (80W)
- 1100H30 WH, BK** 100'

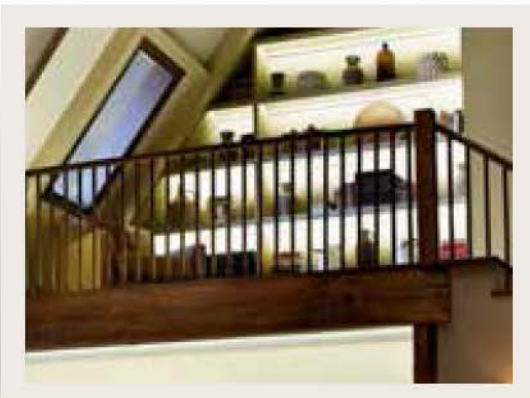


#### COOL WHITE 4,000K

- 116L40 WH, BK** 16' (24W)
- 1100L40 WH, BK** 100'

#### COOL WHITE 4,000K

- 120H40 WH, BK** 20' (80W)
- 1100H40 WH, BK** 100'



INDOOR DRY

#### LOW OUTPUT

Available Finishes  
Black (BK) and White (WH)



BK



WH

#### HIGH OUTPUT

Available Finishes  
Black (BK) and White (WH)



BK



WH





## **b** COLORS: SELECT COLOR (RED, BLUE, GREEN OR YELLOW) & INTENSITY

### LOW OUTPUT

- 32.8' Max Run Length
- 1.45 Watts / Ft.

### Red, Green, Blue, Yellow LED Tape

<b>116LR WH, BK</b>	16'	(24W)
<b>116LG WH, BK</b>	16'	(24W)
<b>116LB WH, BK</b>	16'	(24W)
<b>116LY WH, BK</b>	16'	(24W)

### LOW OUTPUT

Available Finishes  
Black (BK) and White (WH)



BK



WH

### HIGH OUTPUT

- 20' Max Run Length
- 4 Watts / Ft.

### Red, Green, Blue, Yellow LED Tape

<b>120HR WH, BK</b>	20'	(80W)
<b>120HG WH, BK</b>	20'	(80W)
<b>120HB WH, BK</b>	20'	(80W)
<b>120HY WH, BK</b>	20'	(80W)

### HIGH OUTPUT

Available Finishes  
Black (BK) and White (WH)



BK



WH



## **C** COLOR CHANGING RGB (RED, GREEN & BLUE)

### HIGH OUTPUT RGB

- 20' Max Run Length
- 4 Watts / Ft.
- Must be used with 10199 RGB Controller (See Pg. 13)

**120RGB WH, BK** 20' (80W)

### HIGH OUTPUT RGB

Available Finishes  
Black (BK) and White (WH)



BK



WH



Color Changing RGB with Remote Control

# TaskWork LED Tape Light

## 24 Volt DC Indoor Dry



### STEP 2 SELECT ACCESSORIES

#### 10198 WH, BK

LED Tape In line Dimmer

- 0-100% dimming
- Can only be used on 24V output side of power supply
- For indoor use only



#### 12330 WH, BK (10-pack)

- 3' track section
- Snaps on the score every 6"
- Captive screws every 6"
- White or Black finish



#### 10199 BK RGB Controller

- Must be used with RGB tape light**
- Touch controller
- Multiple modes for unique light settings
- Adjusts speed and brightness
- Connects between power supply and tape light



### STEP 3 SELECT POWER SUPPLY LEADS AND INTERCONNECT CABLES

#### Power Supply Leads

- 1SL1 WH, BK** 1' Supply Lead
- 1SL2 WH, BK** 2' Supply Lead
- 1SL8 WH, BK** 8' Supply Lead
- 1SL25 WH, BK** 25' Supply Lead

- Connects tape light to power supply
- Cannot be used as an interconnect cable



#### Connectors

##### 1C1 WH, BK Inline Splice

- Connects two sections of tape together.



##### 1C3 WH, BK 3-Way Connector

- Connects 3 sections of tape together.
- Ideal for making "T" or "Y" connections.
- One input, two outputs.
- 6.25" x 3.50"



##### 1C4 WH, BK 4-Way Connector

- Connects 4 sections of tape together.
- One input, three outputs.
- 6.25" x 6.25"



#### Interconnect Cables

##### 1IC02WH, BK 2" Interconnect 90°

- Used as a "jumper" wire to connect 2 sections of tape light together.
- Flexible connector that is ideal for making tight turns.



- 1IC12 WH, BK** 12" Interconnect
- 1IC36 WH, BK** 36" Interconnect
- 1IC52 WH, BK** 52" Interconnect
- 1IC96 WH, BK** 96" Interconnect







# STEP 4

## CHOOSE POWER SUPPLY

Total wattage of tape light cannot exceed wattage rating of power supply.

### RGB INDOOR CONNECTORS

#### RGB Power Supply Leads

- 1SL1RGB WH, BK** 1' Supply Lead
- 1SL2RGB WH, BK** 2' Supply Lead
- 1SL8RGB WH, BK** 8' Supply Lead
- 1SL25RGB WH, BK** 25' Supply Lead

- Connects tape light to power supply
- Cannot be used as an interconnect cable



#### RGB Connectors

##### 1C1RGB WH, BK Inline Splice

- Connects two sections of tape together.



##### 1C3RGB WH, BK 3-Way Connector

- Connects 3 sections of tape together.
- Ideal for making "T" or "Y" connections.
- One input, two outputs.
- 6.25" x 3.50"



##### 1C4RGB WH, BK 4-Way Connector

- Connects 4 sections of tape together.
- One input, three outputs.
- 6.25" x 6.25"



#### RGB Interconnect Cables

##### 1IC02RGB WH, BK 2" Interconnect 90°

- Used as a "jumper" wire to connect 2 sections of tape light together.
- Flexible connector that is ideal for making tight turns.



- 1IC12RGB WH, BK** 12" Interconnect
- 1IC36RGB WH, BK** 36" Interconnect
- 1IC52RGB WH, BK** 52" Interconnect
- 1IC96RGB WH, BK** 96" Interconnect



- 10190BK30 30W Plug-in Power Supply**
- 10190BK48 48W Plug-in Power Supply**
- 10190BK60 60W Plug-in Power Supply**

- 8' of cord with male DC 2.1 jack on end
- Class 2/24V DC
- 2.4W minimum load requirement



##### 10191BK60 60W Direct Wire Power Supply

- 9.5" L x 3" W x 1.38" H
- Includes 6' cord with male DC 2.1 jack on output side
- Includes push-in wire connectors on 120V input side
- Class 2/24V DC
- No minimum load requirement



##### 10191BK96 96W Direct Wire Power Supply

- 11.5" L x 3" W x 1.38" H
- Includes 6' cord with male DC 2.1 jack on output side
- Includes push-in wire connectors on 120V input side
- Class 2/24V DC
- No minimum load requirement



- 10192BK60 60W Direct Wire Dimmable**
- 10192BK96 96W Direct Wire Dimmable**

- 6.5" L x 2.5" W x 2.25" H
- Rated for both indoor dry and damp locations
- Dimmable with magnetic low voltage dimmer
- Class 2/24V DC
- 5W minimum load requirement
- Compatible with Lutron & Leviton low-voltage magnetic analog dimmers



##### 10193BK

- 8' cord & plug accessory for use with 10192BK60 Direct Wire Dimmable and 10192BK96 Direct Wire Dimmable



# TaskWork LED Tape Light

## 24 Volt DC Indoor Damp



### STEP 1

#### SELECT LIGHT

#### a WHITE: SELECT COLOR TEMPERATURE & LUMEN OUTPUT

#### INDOOR DAMP FEATURES

- 80 CRI
- Expected life 50,000 hrs
- Sections can connect together end-to-end or be used individually
- Tape can be cut every 4" at the end of a run
- Once tape has been cut, the excess cannot be reused
- 3M™ professional grade adhesive backing for an easy peel-and-stick installation
- UL indoor damp location rated
- IP65 Rated
- .4" Width, .1" Height
- Clear silicone coating for added protection against moisture



INDOOR DAMP

#### LOW OUTPUT

- 32.8' Max Run Length
- 100 Lumens / Ft.
- 1.45 Watts / Ft.

#### PURE WHITE 3,200K

- **216L32 WH, BK** 16' (24W)
- **25L32 WH, BK** 5' (7.25W)
- **21L32 WH, BK** 12" (1.45W)
- **204L32 WH, BK** 4" (.48W)

#### COOL WHITE 3,600K

- **216L36 WH, BK** 16' (24W)
- **25L36 WH, BK** 5' (7.25W)
- **21L36 WH, BK** 12" (1.45W)
- **204L36 WH, BK** 4" (.48W)

#### LOW OUTPUT

Available Finishes  
Black (BK) and White (WH)



BK



WH

#### HIGH OUTPUT

- 20' Max Run Length
- 200 Lumens / Ft.
- 4 Watts / Ft.

#### PURE WHITE 3,200K

- **220H32 WH, BK** 20' (80W)
- **25H32 WH, BK** 5' (20W)
- **21H32 WH, BK** 12" (4W)
- **204H32 WH, BK** 4" (1.3W)

#### COOL WHITE 3,600K

- **220H36 WH, BK** 20' (80W)
- **25H36 WH, BK** 5' (20W)
- **21H36 WH, BK** 12" (4W)
- **204H36 WH, BK** 4" (1.3W)

#### HIGH OUTPUT

Available Finishes  
Black (BK) and White (WH)



BK



WH





## b COLORS: SELECT COLOR (RED, BLUE, GREEN OR YELLOW) & INTENSITY

### LOW OUTPUT

- 32.8' Max Run Length
- 1.45 Watts / Ft.

#### Red LED Tape

<b>216LR WH, BK</b>	16'	(24W)
<b>25LR WH, BK</b>	5'	(7.25W)
<b>21LR WH, BK</b>	12"	(1.45W)
<b>204LR WH, BK</b>	4"	(.48W)

#### Green LED Tape

<b>216LG WH, BK</b>	16'	(24W)
<b>25LG WH, BK</b>	5'	(7.25W)
<b>21LG WH, BK</b>	12"	(1.45W)
<b>204LG WH, BK</b>	4"	(.48W)

#### Blue LED Tape

<b>216LB WH, BK</b>	16'	(24W)
<b>25LB WH, BK</b>	5'	(7.25W)
<b>21LB WH, BK</b>	12"	(1.45W)
<b>204LB WH, BK</b>	4"	(.48W)

#### Yellow LED Tape

<b>216LY WH, BK</b>	16'	(24W)
<b>25LY WH, BK</b>	5'	(7.25W)
<b>21LY WH, BK</b>	12"	(1.45W)
<b>204LY WH, BK</b>	4"	(.48W)

### LOW OUTPUT

Available Finishes  
Black (BK) and White (WH)



BK



WH

### HIGH OUTPUT

- 20' Max Run Length
- 4 Watts / Ft.

#### Red LED Tape

<b>220HR WH, BK</b>	20'	(80W)
<b>25HR WH, BK</b>	5'	(20W)
<b>21HR WH, BK</b>	12"	(4W)
<b>204HR WH, BK</b>	4"	(1.3W)

#### Green LED Tape

<b>220HG WH, BK</b>	20'	(80W)
<b>25HG WH, BK</b>	5'	(20W)
<b>21HG WH, BK</b>	12"	(4W)
<b>204HG WH, BK</b>	4"	(1.3W)

#### Blue LED Tape

<b>220HB WH, BK</b>	20'	(80W)
<b>25HB WH, BK</b>	5'	(20W)
<b>21HB WH, BK</b>	12"	(4W)
<b>204HB WH, BK</b>	4"	(1.3W)

#### Yellow LED Tape

<b>220HY WH, BK</b>	20'	(80W)
<b>25HY WH, BK</b>	5'	(20W)
<b>21HY WH, BK</b>	12"	(4W)
<b>204HY WH, BK</b>	4"	(1.3W)

### HIGH OUTPUT

Available Finishes  
Black (BK) and White (WH)



BK



WH

## C COLOR CHANGING RGB (RED, GREEN & BLUE)

### HIGH OUTPUT RGB

- 20' Max Run Length
- 4 Watts / Ft.

#### RGB IP65 LED Tape

<b>220RGB WH, BK</b>	20'	(80W)
<b>25RGB WH, BK</b>	5'	(20W)
<b>21RGB WH, BK</b>	12"	(4W)
<b>204RGB WH, BK</b>	4"	(1.3W)

### HIGH OUTPUT RGB

Available Finishes  
Black (BK) and White (WH)



BK



WH



Color Changing RGB with Remote Control

# TaskWork LED Tape Light

## 24 Volt DC Indoor Damp



### STEP 2 SELECT ACCESSORIES

#### 10181 End Cap

- Caps the end of a cut piece of tape



#### 10183 Silicone



#### 12330 WH, BK (10-pack)

- 3' track section
- Snaps on the score every 6"
- Captive screws every 6"
- White or Black finish



#### 10199 BK RGB Controller

- **Must be used with RGB tape light**

- Touch controller
- Multiple modes for unique light settings
- Adjusts speed and brightness
- Connects between power supply and tape light



### STEP 3 SELECT POWER SUPPLY LEADS AND INTERCONNECT CABLES

#### Power Supply Leads

- 2SL1 WH, BK 1' Supply Lead
- 2SL2 WH, BK 2' Supply Lead
- 2SL8 WH, BK 8' Supply Lead
- 2SL25 WH, BK 25' Supply Lead

- Connects tape light to power supply
- Cannot be used as an interconnect cable



#### Connectors

##### 2C1 WH, BK Inline Splice

- Connects two sections of tape together
- One supplied with each section of tape light



##### 2C3 WH, BK 3-Way Connector

- Connects 3 sections of tape together.
- Ideal for making "T" or "Y" connections.
- One input, two outputs.
- 6.25" x 3.50"



##### 2C4 WH, BK 4-Way Connector

- Connects 4 sections of tape together.
- One input, three outputs.
- 6.25" x 6.25"



#### Interconnect Cables

##### 2IC02 WH, BK 2" Interconnect 90°

- Used as a "jumper" wire to connect 2 sections together, or as a corner connector.
- Flexible connector that is ideal making tight turns.



- 2IC12 WH, BK 12" Interconnect
- 2IC36 WH, BK 36" Interconnect
- 2IC52 WH, BK 52" Interconnect
- 2IC96 WH, BK 96" Interconnect







# STEP 4

## CHOOSE POWER SUPPLY

Total wattage of tape light cannot exceed wattage rating of power supply.

### RGB DAMP LOCATION CONNECTORS

#### Power Supply Leads - RGB

- 2SL1RGB WH, BK** 12" Supply Lead
- 2SL2RGB WH, BK** 2' Supply Lead
- 2SL8RGB WH, BK** 8' Supply Lead
- 2SL25RGB WH, BK** 25' Supply Lead

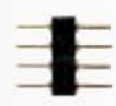
- Connects tape light to power supply
- Cannot be used as an interconnect cable



#### Connectors - RGB

##### 2C1 WH, BK Inline Splice

- Connects two sections of tape together.



##### 2C3RGB WH, BK 3-Way Connector

- Connects 3 sections of tape together.
- Ideal for making "T" or "Y" connections.
- One input, two outputs.
- 6.25" x 3.50"



##### 2C4RGB WH, BK 4-Way Connector

- Connects 4 sections of tape together.
- One input, three outputs.
- 6.25" x 6.25"



#### Interconnect Cables - RGB

##### 2IC02RGB WH, BK 2" Interconnect 90°

- Used as a "jumper" wire to connect 2 sections of tape light together.
- Flexible connector that is ideal for making tight turns.



- 2IC12RGB WH, BK** 12" Interconnect
- 2IC36RGB WH, BK** 36" Interconnect
- 2IC52RGB WH, BK** 52" Interconnect
- 2IC96RGB WH, BK** 96" Interconnect



### INDOOR DAMP LOCATION POWER SUPPLIES

- 10190BK30 30W Plug-in Power Supply**
- 10190BK48 48W Plug-in Power Supply**
- 10190BK60 60W Plug-in Power Supply**

- 8' of cord with male DC 2.1 jack on end
- Class 2/24V DC
- 2.4W minimum load requirement



##### 10191BK60 60W Direct Wire Power Supply

- 9.5" L x 3" W x 1.38" H
- Includes 6' cord with male DC 2.1 jack on output side
- Includes push-in wire connectors on 120V input side
- No minimum load requirement



##### 10191BK96 96W Direct Wire Power Supply

- 11.5" L x 3" W x 1.38" H
- Includes 6' cord with male DC 2.1 jack on output side
- Includes push-in wire connectors on 120V input side
- No minimum load requirement



- 10192BK60 60W Direct Wire Dimmable**
- 10192BK96 96W Direct Wire Dimmable**

- 6.5" L x 2.5" W x 2.25" H
- Rated for both indoor dry and damp locations
- Dimmable with low voltage magnetic dimmer
- 5W minimum load requirement
- Compatible with Lutron & Leviton low-voltage magnetic analog dimmers



##### 10193BK

- 8' cord & plug accessory for use with 10192BK60 Direct Wire Dimmable and 10192BK96 Direct Wire Dimmable



# TaskWork LED Tape Light

## 24 Volt DC Outdoor Wet



### STEP 1 SELECT LIGHT

### a WHITE: SELECT COLOR TEMPERATURE & LUMEN OUTPUT

### b COLORS: SELECT COLOR (RED, BLUE, GREEN OR YELLOW) & INTENSITY

#### OUTDOOR WET FEATURES

- 80 CRI
- Expected life 50,000 hrs
- Sections can connect together end-to-end or be used individually
- Tape can be cut every 4" at the end of a run
- Once tape has been cut, the excess cannot be reused
- 3M™ professional grade adhesive backing for an easy peel-and-stick installation
- UL outdoor wet location rated
- IP67 Rated
- .5" Width, .2" Height



Outdoor Wet Tape is also available in Red, Green, Yellow, Blue and Color Changing RGB.

#### HIGH OUTPUT

- 20' Max Run Length
- 4 Watts / Ft.
- 200 Lm. / Ft.

#### PURE WHITE 3,200K

<b>320H32 WH, BK</b>	20'	(80W)
<b>310H32 WH, BK</b>	10'	(40W)
<b>34H32 WH, BK</b>	4'	(16W)
<b>31H32 WH, BK</b>	12"	(4W)

#### COOL WHITE 3,600K

<b>320H36 WH, BK</b>	20'	(80W)
<b>310H36 WH, BK</b>	10'	(40W)
<b>34H36 WH, BK</b>	4'	(16W)
<b>31H36 WH, BK</b>	12"	(4W)

#### Available Finishes

Black (BK) and White (WH)



BK



WH

#### HIGH OUTPUT

- 20' Max Run Length
- 4 Watts / Ft.
- 200 Lm. / Ft.

#### Red LED Tape

<b>320HR WH, BK</b>	20'	(80W)
<b>310HR WH, BK</b>	10'	(40W)
<b>34HR WH, BK</b>	4'	(16W)
<b>31HR WH, BK</b>	12"	(4W)

#### Green LED Tape

<b>320HG WH, BK</b>	20'	(80W)
<b>310HG WH, BK</b>	10'	(40W)
<b>34HG WH, BK</b>	4'	(16W)
<b>31HG WH, BK</b>	12"	(4W)

#### Blue IP67 Tape

<b>320HB WH, BK</b>	20'	(80W)
<b>310HB WH, BK</b>	10'	(40W)
<b>34HB WH, BK</b>	4'	(16W)
<b>31HB WH, BK</b>	12"	(4W)

#### Yellow IP67 Tape

<b>320HY WH, BK</b>	20'	(80W)
<b>310HY WH, BK</b>	10'	(40W)
<b>34HY WH, BK</b>	4'	(16W)
<b>31HY WH, BK</b>	12"	(4W)

#### Available Finishes

Black (BK) and White (WH)



BK



WH





STEP

2

## SELECT ACCESSORIES

## C COLOR CHANGING RGB (RED, GREEN & BLUE)

### HIGH OUTPUT

- 20' Max Run Length
- 4 Watts / Ft.

### RGB LED Tape

<b>320RGB WH, BK</b>	20' (80W)
<b>310RGB WH, BK</b>	10' (40W)
<b>34RGB WH, BK</b>	4' (16W)
<b>31RGB WH, BK</b>	12" (4W)

### Available Finishes

Black (BK) and White (WH)



BK



WH

### 10180 LED Tape 10MM Mounting Clip

- Flexible mounting clip
- Use as extra support for outdoor tape



### 10182 End Cap

- Caps the end of a cut piece of tape



### 10183 Silicone

- Use with 10182 for a water tight seal

### 10184 LED Tape IP67 Terminator Cap

- Caps last connector at end of tape run if tape is not cut.



### 12330 WH, BK (10-pack)

- 3' track section
- Snaps on the score every 6"
- Captive screws every 6"
- White or Black finish



### 10199 BK LED Tape RGB Controller

- **Must be used with RGB tape light**
- Multiple modes for unique light settings
- Adjusts speed and brightness
- Must be contained in a waterproof enclosure rated for outdoor use.



OUTDOOR WET

# TaskWork LED Tape Light

## 24 Volt DC Outdoor Wet



STEP

# 3

### SELECT POWER SUPPLY LEADS AND INTERCONNECT CABLES

#### WET LOCATION - OUTDOOR CONNECTORS

**3IC2 CLR** 2' Interconnect

**3IC5 CLR** 5' Interconnect

**3IC10 CLR** 10' Interconnect

- Used as a "jumper" wire to connect 2 sections of tape light together.



#### 3C3 CLR 3-Way Connector

- Connects 3 sections of tape together.
- Ideal for making "T" or "Y" connections
- One input, two outputs.
- 6" Length.



#### 3C4 CLR 4-Way Connector

- Connects 4 sections of tape together.
- Can be used with a Supply Lead.
- One input, three outputs.
- 6" Length.



#### Outdoor Connectors - RGB

**3IC2RGB CLR** 2' Interconnect

**3IC5RGB CLR** 5' Interconnect

**3IC10RGB CLR** 10' Interconnect

- Used as a "jumper" wire to connect 2 sections of tape light together.



#### 3C3RGB CLR 3-Way Connector

- Connects 3 sections of tape together.
- Ideal for making "T" or "Y" connections.
- One input, two outputs.
- 6" Length.



#### 3C4RGB CLR 4-Way Connector

- Connects 4 sections of tape together.
- Can be used with a Supply Lead.
- One input, three outputs.
- 6" Length.



STEP

# 4

### CHOOSE POWER SUPPLY

Total wattage of tape light cannot exceed wattage rating of power supply.

#### OUTDOOR POWER SUPPLIES

##### 10194BK25 25W Plug in Power Supply

- 9.5" L x 1.75" W x 1.25" H
- 6' cord & plug
- 6' lead wire with waterproof DC2.1 jack
- Suitable for outdoor wet locations
- 2.5W minimum load requirement



##### 10194BK60 60W Plug in Power Supply

- 9.5" L x 1.75" W x 1.25" H
- 6' cord & plug
- 6' lead wire with waterproof DC2.1 jack
- Suitable for outdoor wet locations
- 6W minimum load requirement



##### 10194BK100 100W Plug in Power Supply

- 9.5" L x 2.25" W x 1.5" H
- 6' cord & plug
- 6' lead wire with waterproof DC2.1 jack
- Suitable for outdoor wet locations
- 10W minimum load requirement





**Q. Can the tape light be dimmed using a wall dimmer.**

**A.** Yes. The tape light can be dimmed using a Magnetic Low Voltage (MLV) dimmer (not sold by Kichler) and one of Kichler's magnetic transformers (10192BK60 or 96).

**Q. Do I have to use an entire roll of tape at a time?**

**A.** No, it is not necessary to use an entire roll at once. The indoor, dry location tape can be cut every 4" and then reconnected with a variety of connectors for a truly custom install. The indoor damp and outdoor tapes come in multiple lengths making it easy to fit any application.

**Q. Do I need special tools to cut the tape light?**

**A.** No, the tape light can be easily cut using a standard pair of scissors.

**Q. Can all tape light be cut?**

**A.** Yes, all Kichler tape light (indoor, damp, and outdoor) can be cut every 4". However, only the indoor tape light can be reused. Because of the protective coating on the damp and outdoor tapes, once they have been cut, the excess cannot be reused.

**Q. If the damp or outdoor tape light needs to be cut, will it still be moisture proof?**

**A.** In order to maintain a moisture proof seal, once cut, the cut end needs to be capped with a silicone filled end cap. End caps and silicone available separately from Kichler.

**Q. Can the outdoor tape light be submersed under water?**

**A.** No. The outdoor tape light is IP67 rated which means it can be subjected to direct contact with water, but it cannot be submersed under water for any length of time.

**Q. How do I know which power supply to use?**

**A.** First determine the application (indoor dry, indoor damp, outdoor). Not all power supplies can be used in every application. Next calculate the total wattage of tape light that will be used. To calculate wattage, multiply the total number of feet by the W/ft. of the tape light. Finally select a power supply that is equal to or more than the total wattage of the tape light.

**Q. How many tape lights can be connected to one power supply?**

**A.** Multiple strands or sections of tape light can be connected to one power supply as long as the wattage of the power supply and maximum run length of the tape light are not exceeded.

**Q. What is a maximum run length?**

**A.** The maximum run length, or max run refers to the maximum number of continuous lineal feet of tape light that can be connected together. The maximum run length for low output tape light (1.45W/ft.) is 32.8'. The maximum run length for high output tape light (4W/ft.) is 20'.

**Q. What is the difference between low output tape light and high output tape light?**

**A.** The main differences between the two are the light intensity, or lumen output and the watts consumed. Kichler's low output tape light has a lumen output of 100 lm/ft. while using 1.45W/ft., while the high output tape light has a lumen output of 200 lm/ft. while using 4W/ft. The lower light levels of the low output tape light are best suited for "accent" lighting. The higher lumens levels of the high output tape light are best for "task" lighting or areas where higher light levels are needed.

**Q. Is tape light easy to install?**

**A.** Yes. Kichler's tape light incorporates many installer friendly features such as plug-and-play power supply connections, plug-and-play tape light connectors, and 3M brand adhesive backing. In addition to these included features, Kichler offers a large variety of additional connectors and accessories to make installations even easier. Please refer to the tape light installation instruction included with shipped product for complete installation details.

**Q. What is the warranty on Kichler® TaskWork LED Tape Light?**

**A.** Kichler Lighting warrants that its Products will be free from defects in material and workmanship for five (5) years from the date of purchase by the Original Purchaser. For further warranty details, visit [Kichler.com](http://Kichler.com).

# Index

Item ID	Page	Item ID	Page	Item ID	Page	Item ID	Page	Item ID	Page	Item ID	Page
10180	19	120HRWH	11	204H32 WH	14	21LG WH	15	204RGBWH	17	31HBWH	18
10181	16	120HY BK	11	204H36 BK	14	21LR BK	15	21C02 BK	16	31HG BK	18
10182	19	120HYWH	11	204H36 WH	14	21LRWH	15	21C02 WH	16	31HG WH	18
10183	16, 19	120RGB BK	11	204HBBK	15	21LYBK	15	21C02RGB BK	17	31HR BK	18
10184	19	120RGBWH	11	204HBWH	15	21LYWH	15	21C02RGBWH	17	31HRWH	18
10190 BK30	13	12330 BK	12, 16, 19	204HG BK	15	21RGB BK	15	21C12 BK	16	31HY BK	18
10190 BK48	13	12330 WH	12, 16, 19	204HGWH	15	21RGBWH	15	21C12 WH	16	31HYWH	18
10190 BK60	13	1C1 BK	12	204HRBK	15	220H32 BK	14	21C12RGB BK	17	31RGB BK	19
10191 BK60	13, 17	1C1 WH	12	204HRWH	15	220H32 WH	14	21C12RGBWH	17	31RGBWH	19
10191 BK96	13, 17	1C1 RGB BK	13	204HYBK	15	220H36 BK	14	21C36 BK	16	320H32 BK	18
10192 BK60	13, 17, 20	1C1 RGBWH	13	204HYWH	15	220H36 WH	14	21C36 WH	16	320H32WH	18
10192 BK96	13, 17, 20	1C3 BK	12	204L32 BK	14	220HB BK	15	21C36RGB BK	17	320H36 BK	18
10193 BK	13, 17, 20	1C3 WH	12	204L32 WH	14	220HBWH	15	21C36RGBWH	17	320H36WH	18
10194 BK100	20	1C3RGB BK	13	204L36 BK	14	220HG BK	15	21C52 BK	16	320HB BK	18
10194 BK25	20	1C3RGBWH	13	204L36 WH	14	220HG WH	15	21C52 WH	16	320HBWH	18
10194 BK60	20	1C4 BK	12	204LB BK	14	220HR BK	15	21C52RGB BK	17	320HG BK	18
10198 BK	12	1C4 WH	12	204LBWH	14	220HRWH	15	21C52RGBWH	17	320HGWH	18
10198 WH	12	1C4RGB BK	13	204LG BK	15	220HY BK	15	21C96 BK	16	320HRBK	18
10199 BK	12, 16, 19	1C4RGBWH	13	204LG WH	15	220HYWH	15	21C96 WH	16	320HRWH	18
1100H27 BK	10	11C02 BK	12	204LR BK	15	220RGB BK	15	21C96RGB BK	17	320HY BK	18
1100H27 WH	10	11C02 WH	12	204LRWH	15	220RGBWH	15	21C96RGBWH	17	320HYWH	18
1100H30 BK	10	11C02RGB BK	13	204LY BK	15	25H32 BK	14	2SL1 BK	16	320RGB BK	19
1100H30 WH	10	11C02RGBWH	13	204LYWH	15	25H32 WH	14	2SL1 WH	16	320RGBWH	19
1100H40 BK	10	11C12 BK	12	204RGB BK	15	25H36 BK	14	2SL1RGB BK	17	34H32 BK	18
1100H40 WH	10	11C12 WH	12	204RGBWH	15	25H36 WH	14	2SL1RGBWH	17	34H32 WH	18
1100L27 BK	10	11C12RGB BK	13	216L32 BK	14	25HB BK	15	2SL2 BK	16	34H36 BK	18
1100L27 WH	10	11C12RGBWH	13	216L32 WH	14	25HBWH	15	2SL2WH	16	34H36 WH	18
1100L30 BK	10	11C36 BK	12	216L36 BK	14	25HG BK	15	2SL25 BK	16	34HB BK	18
1100L30 WH	10	11C36 WH	12	216L36 WH	14	25HG WH	15	2SL25 WH	16	34HBWH	18
1100L40 BK	10	11C36RGB BK	13	216LB BK	15	25HR BK	15	2SL25RGB BK	17	34HG BK	18
1100L40 WH	10	11C36RGBWH	13	216LBWH	15	25HRWH	15	2SL25RGBWH	17	34HG WH	18
116L27 BK	10	11C52 BK	12	216LG BK	15	25HY BK	15	2SL2RGB BK	17	34HR BK	18
116L27 WH	10	11C52 WH	12	216LG WH	15	25HYWH	15	2SL2RGBWH	17	34HRWH	18
116L30 BK	10	11C52RGB BK	13	216LR BK	15	25L32 BK	14	2SL8 BK	16	34HY BK	18
116L30 WH	10	11C52RGBWH	13	216LRWH	15	25L32WH	14	2SL8WH	16	34HYWH	18
116L40 BK	10	11C96 BK	12	216LY BK	15	25L36 BK	14	2SL8RGB BK	17	34RGB BK	19
116L40 WH	10	11C96 WH	12	216LYWH	15	25L36WH	14	2SL8RGBWH	17	34RGBWH	19
116LB BK	11	11C96RGB BK	13	21H32 BK	14	25LB BK	15	310H32 BK	18	3C3 CLR	20
116LBWH	11	11C96RGBWH	13	21H32WH	14	25LBWH	15	310H32 WH	18	3C3RGB CLR	20
116LG BK	11	1SL1 BK	12	21H36 BK	14	25LG BK	15	310H36 BK	18	3C4 CLR	20
116LGWH	11	1SL1 WH	12	21H36WH	14	25LG WH	15	310H36 WH	18	3C4RGB CLR	20
116LR BK	11	1SL1RGB BK	13	21HB BK	15	25LR BK	15	310HB BK	18	31C10 CLR	20
116LRWH	11	1SL1RGBWH	13	21HBWH	15	25LRWH	15	310HBWH	18	31C10RGB CLR	20
116LY BK	11	1SL2 BK	12	21HG BK	15	25LYBK	15	310HG BK	18	31C2 CLR	20
116LYWH	11	1SL2 WH	12	21HG WH	15	25LYWH	15	310HGWH	18	31C2RGB CLR	20
120H27 BK	10	1SL25 BK	12	21HR BK	15	25RGB BK	15	310HR BK	18	31C5 CLR	20
120H27 WH	10	1SL25 WH	12	21HRWH	15	25RGBWH	15	310HRWH	18	31C5RGB CLR	20
120H30 BK	10	1SL25RGB BK	13	21HY BK	15	2C1 BK	16, 17	310HYBK	18		
120H30WH	10	1SL25RGBWH	13	21HYWH	15	2C1 WH	16, 17	310HYWH	18		
120H40 BK	10	1SL2RGB BK	13	21L32 BK	14	2C3 BK	16	310RGB BK	19		
120H40WH	10	1SL2RGBWH	13	21L32 WH	14	2C3WH	16	310RGBWH	19		
120HBBK	11	1SL8 BK	12	21L36 BK	14	2C3RGB BK	17	31H32 BK	18		
120HBWH	11	1SL8 WH	12	21L36 WH	14	2C3RGBWH	17	31H32WH	18		
120HG BK	11	1SL8RGB BK	13	21LB BK	15	2C4 BK	16	31H36 BK	18		
120HGWH	11	1SL8RGBWH	13	21LBWH	15	2C4WH	16	31H36WH	18		
120HRBK	11	204H32 BK	14	21LG BK	15	2C4RGB BK	17	31HB BK	18		



See your dealer for information on our full line of  
Cabinet Lighting Systems



VIEW THIS  
PRODUCT ON  
KICHLER.COM

scan with your  
smartphone app.

See your dealer for information on our full line of  
Ceiling Fans



VIEW THIS  
PRODUCT ON  
KICHLER.COM

scan with your  
smartphone app.

See your dealer for information on our full line of  
Kichler Lighting



VIEW THIS  
PRODUCT ON  
KICHLER.COM

scan with your  
smartphone app.

See your dealer for information on our full line of  
Landscape Lighting



VIEW THIS  
PRODUCT ON  
KICHLER.COM

scan with your  
smartphone app.





**KICHLER LIGHTING**  
 World Headquarters  
 7711 E. Pleasant Valley Rd.  
 PO Box 318010  
 Cleveland, Ohio 44131-8010

**www.kichler.com**  
 Distribution Centers:  
 Atlanta, Georgia  
 Cleveland, Ohio  
 Las Vegas, Nevada

1M/12-LS-2051  
 Printed in USA 6.12  
 © Copyright All rights reserved.  
 Kichler Lighting.  
 ST12LS2051

The majority of newer Kichler Lighting fixtures are U.S. Patent Pending. Many are also Patent Pending in Canada.

