

Before Installing

All installations should comply with National and local electrical codes. If you have any doubts concerning installation, contact a qualified, licensed electrician.

Note: Read all instructions thoroughly before starting installation.

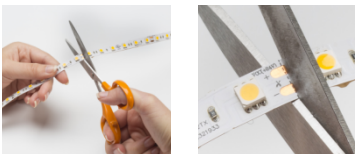
- 1) This fixture can only be used with Kichler LED Tape Lighting fixtures and accessories.
- 2) This fixture must be connected to a UL listed Class 2, 24VDC power supply.
- 3) Total wattage of tape light should not exceed power supply wattage. To determine the total wattage of tape light, multiply the total number of feet used by the wattages listed below for the appropriate tape light type.
 - a. Model # 1xxLxxxx = 1.45 W/ft. (Low Output)
Maximum run length – 32.8 lineal feet
 - b. Model # 1xxHxxxx = 4 W/ft. (High Output)
Maximum run length – 20 lineal feet
- 4) For use in Dry Locations only.

Pre Installation Checklist

- o Prepare the location that the LED tape light will be installed. Make sure that the area has been thoroughly cleaned and is dry. If installing underneath a cabinet, it is recommended to install tape light at least 1-1/2" away from cabinet lip to prevent shadowing on counter top surface.
- o Determine location for power supply and length of supply lead wire that will be needed.
- o Determine how many sections of tape light and different connectors will be needed.

Installation

1. Install power supply.
Note: The power supply should be installed by a qualified electrician and be installed in accordance with national and local electric codes. Refer to the power supply installation instructions for further detail.
2. Run supply lead wire from power supply to beginning of tape light run. **Do not connect to power supply yet.**
3. Measure and cut the first section of tape light.
Note: Be sure to leave a minimum one inch of space on each end for connections.
Note: To cut the tape light, use a pair of sharp scissors or snips and cut on the dotted cut line only.



4. Connect tape light to supply lead wire.
Note: Make sure +/- symbols on tape light line up with the +/- symbols on the connector of the supply lead wire. **NOTE: ¼" of the adhesive backing must be completely removed from the end of the tape that will be inserted into the connector. CAUTION: If the adhesive backing is not removed, this may cause damage to the connector.**
Note: To connect;
 - 1) Open connector.
 - 2) Slide tape light into front of connector. Gently push the tape light forward until the tape light is fully seated in the connector and is under the prongs.



- 3) Close connector.



5. Remove 3M backing from tape light and apply.



Note: For best results, peel off backing and apply tape light in small sections starting at the beginning of the run.



Note: Avoid using excessive force to prevent damage to LEDs and other components.

6. Install any additional sections of tape light and connectors in the same manner.
7. Connect power supply lead to power supply and turn on.
Note: Before powering on the system, double check that all connections are secure and that all polarity (+/-) symbols are oriented in the same direction.

Before Installing

All installations should comply with National and local electrical codes. If you have any doubts concerning installation, contact a qualified, licensed electrician.

Note: Read all instructions thoroughly before starting installation.

- 1) This fixture can only be used with Kichler LED Tape Lighting fixtures and accessories.
- 2) This fixture must be connected to a UL listed Class 2, 24VDC power supply.
- 3) Total wattage of tape light should not exceed power supply wattage. To determine the total wattage of tape light, multiply the total number of feet used by the wattages listed below for the appropriate tape light type.
 - a. Model # 2xxLxxxx = 1.45 W/ft. (Low Output)
Maximum run length – 32.8 lineal feet
 - b. Model # 2xxHxxxx = 4 W/ft. (High Output)
Maximum run length – 20 lineal feet.
- 4) Indoor dry or Indoor damp locations.

Pre Installation Checklist

- o Prepare the location that the LED tape light will be installed. Make sure that the area has been thoroughly cleaned and is dry. If installing underneath a cabinet, it is recommended to install tape light at least 1-1/2" away from cabinet lip to prevent shadowing on counter top surface.
- o Determine location for power supply and length of supply lead wire that will be needed.
- o Determine how many sections of tape light and different connectors will be needed.

Installation

1. Install power supply.
Note: The power supply should be installed by a qualified electrician and be installed in accordance with national and local electric codes. Refer to the power supply installation instructions for further detail.
2. Run supply lead wire from power supply to beginning of tape light run. **Do not connect to power supply yet.**
3. Connect tape light to supply lead wire.



Note: The arrow on the supply lead wire connector should line up with the + side of the tape light.

Note: To connect, push the 4 pins of the tape light into the connector

4. Remove 3M backing from tape light and apply.



Note: For best results, peel off backing and apply tape light in small sections starting at the beginning of the run.



Note: Avoid using excessive force to prevent damage to LEDs and other components.

5. Install any additional sections of tape light and connectors in the same manner.
6. Cut tape light to size (optional)

Note: Only the last piece of tape light in a run should be cut. Once cut, the cut section cannot be reused. Note: To cut the tape light, use a pair of sharp scissors or snips and cut on the dotted cut line only.



Note: To maintain a water tight seal on the tape light, fill an end cap (10181) with silicone and slide onto the exposed, cut end of the tape light. (End caps and silicone sold separately)

7. Connect power supply lead to power supply and turn on.
Note: Before powering on the system, double check that all connections are secure and that all polarity (+/-) symbols are oriented in the same direction.

Before Installing

All installations should comply with National and local electrical codes. If you have any doubts concerning installation, contact a qualified, licensed electrician.

Note: Read all instructions thoroughly before starting installation.

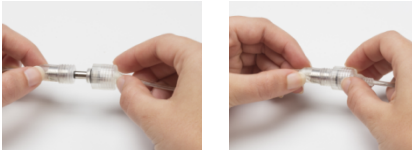
- 1) This fixture can only be used with Kichler LED Tape Lighting fixtures and accessories.
- 2) This fixture must be connected to a UL listed Class 2 outdoor rated, 24VDC power supply. Do not exceed the maximum run length.
- 3) Total wattage of tape light should not exceed power supply wattage. To determine the total wattage of tape light, multiply the total number of feet used by the wattages listed below for the appropriate tape light type.
 - a. Model # 3xxHxxxx = 4 W/ft.
Maximum run length – 20 lineal feet
- 4) Outdoor wet locations.

Pre Installation Checklist

- o Prepare the location that the LED tape light will be installed. Make sure that the area has been thoroughly cleaned and is dry.
- o Determine location for power supply and length of supply lead wire that will be needed.
- o Determine how many sections of tape light and different connectors will be needed.

Installation

1. Install power supply.
Note: The power supply should be installed by a qualified electrician and be installed in accordance with national and local electric codes. Refer to the power supply installation instructions for further detail.
2. Run supply lead wire from power supply to beginning of tape light run. **Do not connect to power supply yet.**
3. Connect tape light to supply lead wire.



Note: To connect, insert male DC jack from power supply into female DC jack on tape light. Screw together until firmly tightened.

4. Remove 3M backing from tape light and apply.



Note: For best results, peel off backing and apply tape light in small sections starting at the beginning of the run.



Note: Avoid using excessive force to prevent damage to LEDs and other components. It is recommended to use mounting clips (10180) in addition to the 3M adhesive backing.

5. Install any additional sections of tape light and connectors in the same manner.
6. Cut tape light to size (optional)

Note: Only the last piece of tape light in a run should be cut. Once cut, the cut section cannot be reused.
Note: To cut the tape light, use a pair of sharp scissors or snips and cut on the dotted cut line only.



Note: To maintain a water tight seal on the tape light, fill an end cap (10182) with silicone and slide onto the exposed, cut end of the tape light. (End caps and silicone sold separately)

7. Connect power supply lead to power supply and turn on.
Note: Before powering on the system, double check that all connections are secure and that all polarity (+/-) symbols are oriented in the same direction.