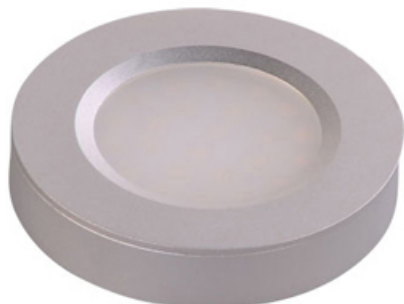




Lighting Your Life Since 1970

Product Specifications - 53850AL

Job Name:	Job Type:
Quantity:	Comments:



53850AL

CounterMax MX-LD-R LED Disc Add-On

This LED Add-On Disc must be used with a Starter Kit (53853). No more than three LED Add-On Discs can be added to a single Starter Kit. Each LED Add-On Disc includes a 36" connection cord. Uses MXInterLink6 accessories. Click [here](#) for a complete list of compatible accessories.

Finish

Brushed Aluminum

Glass/Shade

Frosted

Product Category

Under Cabinet Disc

Lamping

Number of Bulbs	24
Light Type	LED
Bulb Type	LED
Max Bulb Wattage	0.1
Max Fixture Wattage	2.4
Rated Life	±30,000 Hours
Rated Lumens	±186
Color Temp	±3,000 K
Bulb(s)	Not Included
Light Up/Down	N/A
Beam Spread	N/A
CRI	50+
Photo Cell Included	N/A
Ballast/Driver/Transformer	No
Dimmable	Optional Touch Dimmer

Measurements

Width	2.8"
Height	0.5"
Length	N/A
Extension	N/A
Back Plate Width	N/A
Back Plate Height	N/A
HCO	N/A
Min Overall Height	N/A
Max Overall Height	N/A
Hanging Weight	0.3 lbs
Height Adjustable	N/A
Slope	N/A
Chain Length	N/A
Wire Length	N/A
Canopy Width	N/A
Canopy Height	N/A
Canopy Length	N/A

Shipping

Carton Weight	0.3 lbs
Carton Width	3"
Carton Height	2"
Carton Length	4"
Carton Cubic Feet	0.02
Master Pack	100
Master Pack Weight	29.7 lbs
Master Pack Width	17.7"
Master Pack Height	13.0"
Master Pack Length	18.7"
Master Cubic Feet	2.49
UPS Shippable	Yes

Certification

Safety Rating	Dry
Energy Star	No
CA Title 24	No
CA Title 20	No
ADA	No
Dark Sky	N/A

Other

UPC Code	783209095380
Shades Included	N/A
Crystals Included	N/A
Diffuser Included	N/A
Conversion Kit	N/A
Material	N/A

Equivalents

Incandescent Watts	16.91
Fluorescent Watts	3.72

Maxim Lighting International and all designs, logos and images © 2013 Maxim Lighting International. All Rights Reserved. Maxim Lighting International reserves the right, at any time, to make changes in the design and/or construction of the product including the discontinuation of product without prior notice. Color may vary from what is pictured above due to limitations inherent to photographic processes.

Always consult a qualified, licensed electrician before installation of any product weighing 35 pounds or more. We recommend that a qualified, licensed electrician do the installation. Always install to a mechanically sound structure.