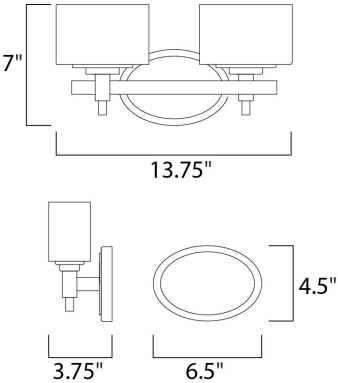




PRODUCT DESCRIPTION

The soft round curves of this design are evident in every detail. The use of xenon allows for a profile that is delicate in scale. The Lola collection is available in Polished Nickel finish with Satin White glass or Oil Rubbed Bronze finish with Dusty White glass.



MEASUREMENTS

DIMENSION : 13.75" W x 7" H x 3.75" Ext  
BACK PLATE : 6.54" W x 4.5" H x 5" HCO  
HANGING WEIGHT : 3.75 lb

LAMPING

INPUT VOLTAGE : 120V  
LUMENS : 1,600 Rated  
BULB : 2 x 40W Xenon G9 , 80W Total  
BULB INCLUDED : (Included)  
DIMMABLE : Yes  
COLOR\_TEMP : 2900K

FINISHES OPTION

 Polished Nickel

GLASS

Satin White SW

MATERIAL

Steel, Glass

RATINGS

cETLus  
Damp Location  
ADA



ADDITIONAL

INSTALL UP/DOWN: Up  
RATED LIFE 2000 Hours  
OPERATING TEMPERATURE:  
-20°C (-4°F), 40°C (104°F)

Always consult a qualified electrician before installing any lighting product.



**WESTERN DISTRIBUTION CENTER (HEADQUARTER)**  
253 NORTH VINELAND AVE | CITY OF INDUSTRY, GA 91746  
**EASTERN DISTRIBUTION CENTER**  
4200 SHIRLEY DR. | ATLANTA, GA 30336  
P. 626.956.4200 | F. 626.956.4225 | maximlighting.com