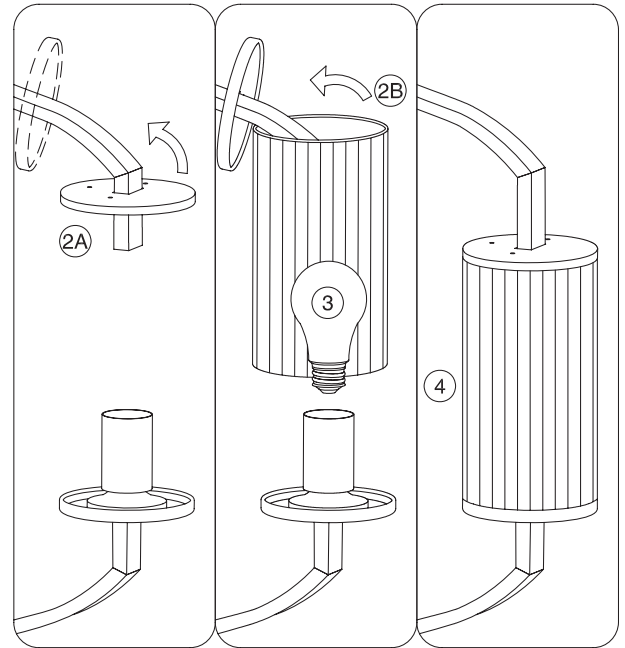
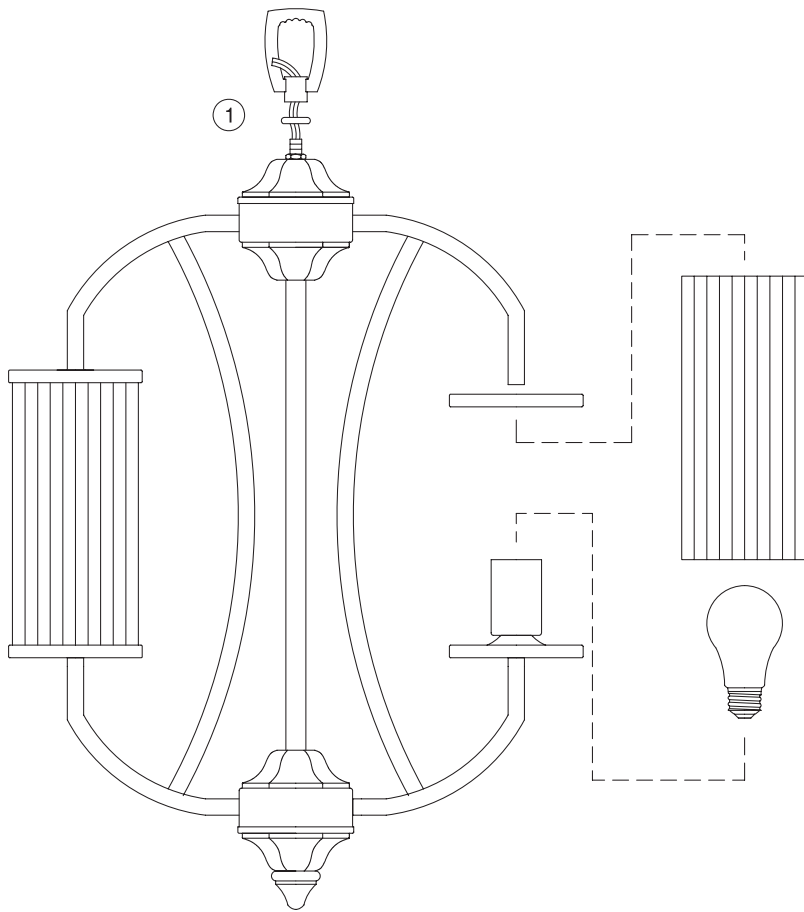


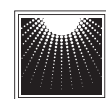
Assembly Instructions For **F2564/6, F2565/3** (E) 12/09



IMPORTANT TURN OFF THE POWER AT THE MAIN FUSE OR CIRCUIT BREAKER BOX BEFORE STARTING INSTALLATION

Carefully unpack and identify all parts before assembly.
Bulbs not included.

1. Follow enclosed supplement installation instructions for electrical and fixture installation onto house outlet box. If you do not have an outlet box at desired location to attach the fixture then hire a qualified electrician to create one.
2. A. Place top cap over the arm.
B. Place glass over the arm.
3. Install bulb (not included). See relamping label located near socket area for type and maximum allowed wattage.
4. Place glass onto the bottom cup and place top cap onto the glass.



**MURRAY
FEISS**

GENERATION
BRANDS 