

QUOIZEL

6 CORPORATE PARKWAY
GOOSE CREEK, SC. 29445
www. quoizel. com

Quoizel, Inc.
6 Corporate Parkway
Goose Creek, SC
29445

Customer Service
Phone 631.273.2700
Fax 631.231.7102
www. quoizel. com

Assembly Instruction Sheet #IS-CKSY1480DL For Style CKSY1480DL

Tools Required: Flathead screwdriver, Phillips screwdriver, pliers, gloves, safety glasses.

Bulb Recommended: None.

Estimated Assembly Time: 20-30 minutes

Preparation: Identify and inspect all parts before beginning installation. Check package content list and diagrams below to be sure all parts are present. If any parts are missing or damaged, do not attempt to assemble, install, or operate the mirror. Contact customer service for replacement parts.

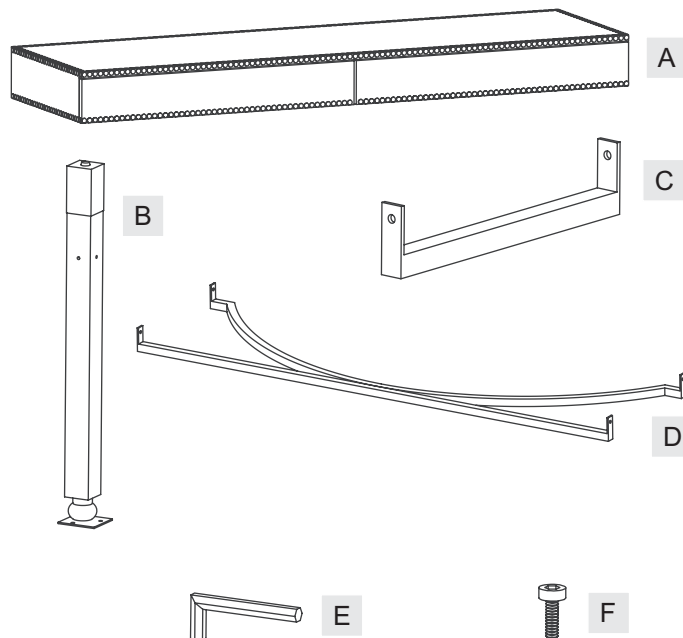


Warnings and Cautions

These instructions are provided for your safety. It is very important you read them completely before installing the mirror. We strongly recommend that a licensed, professional electrician perform the installation.

Package Contents

Part	Description	Quantity
A	Table Top	1 pc
B	Foot	4 pcs
C	Side Bar	2 pcs
D	Middle supporting Frame	1 pc
E	Allen Wrench	1 pc
F	Screw	18 pcs

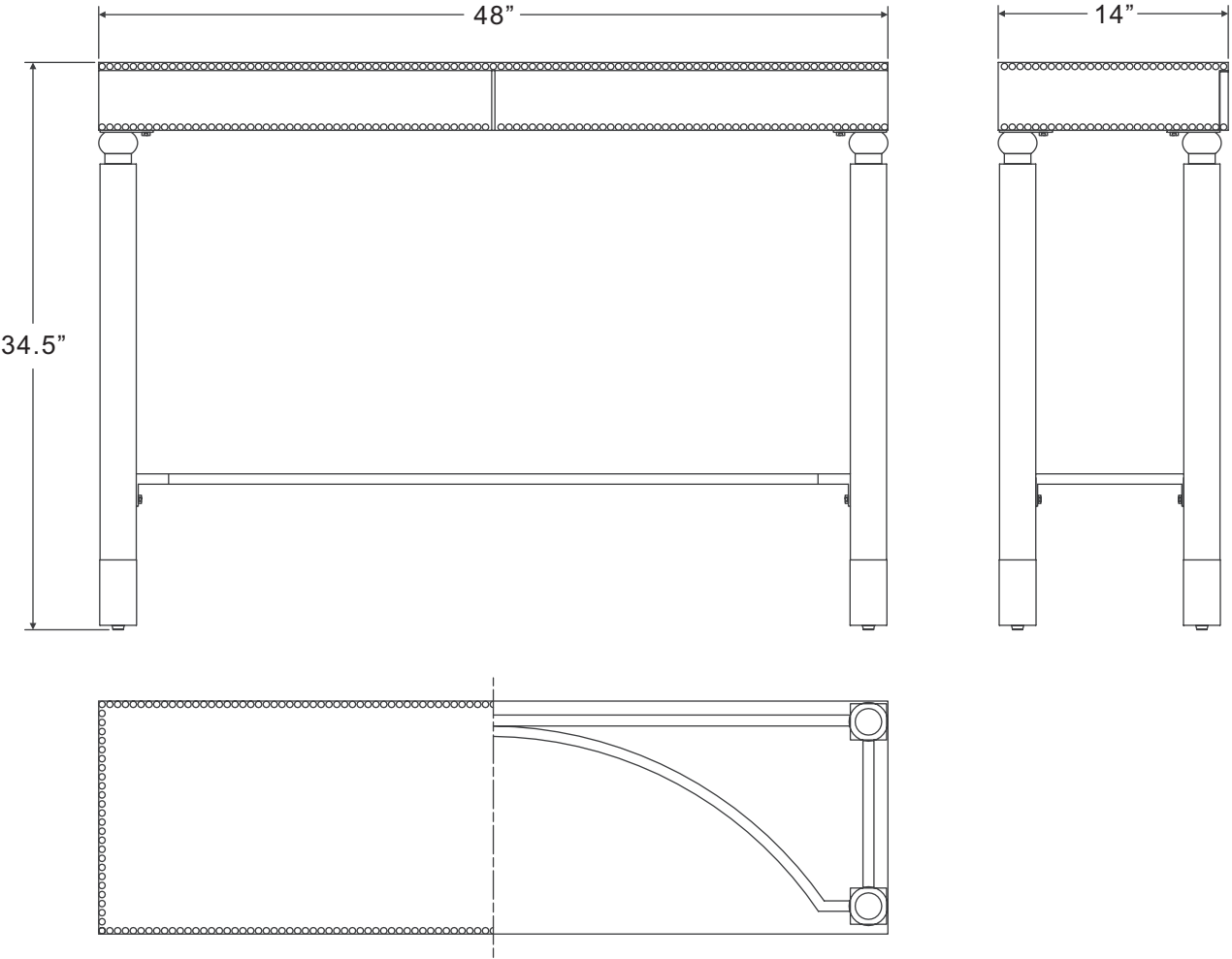
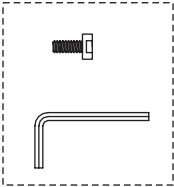


Thank you for purchasing a Quoizel product.

Need assistance with parts or assembly? Call Quoizel customer service at 1-631-273-2700
or visit us on-line at www. quoizel. com

CKSY1480DL

FINISH: DARK CINNAMON LEATHER



NOTE: ALL DIMENSIONS ARE ROUNDED UP TO THE NEAREST 1/2"

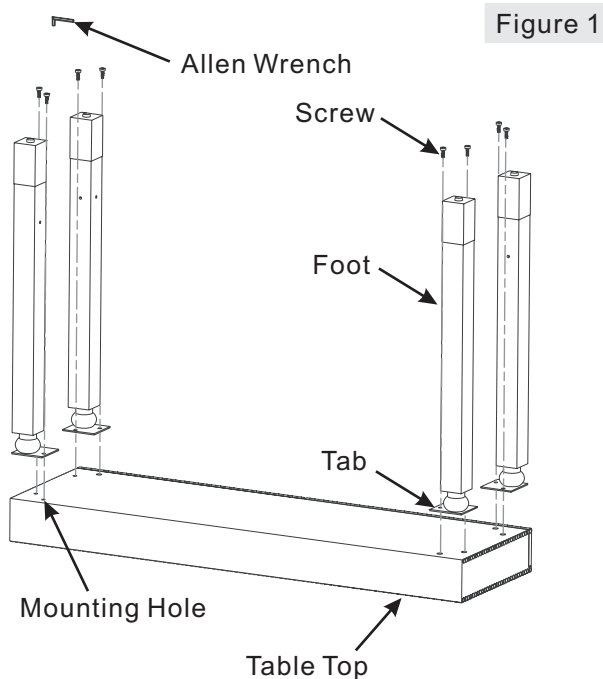
NO.	PART NUMBER	REPLACEMENT PART DESCRIPTION	REQ.
1			

Assembly Instruction Sheet #IS-CKSY1480DL

For Style CKSY1480DL

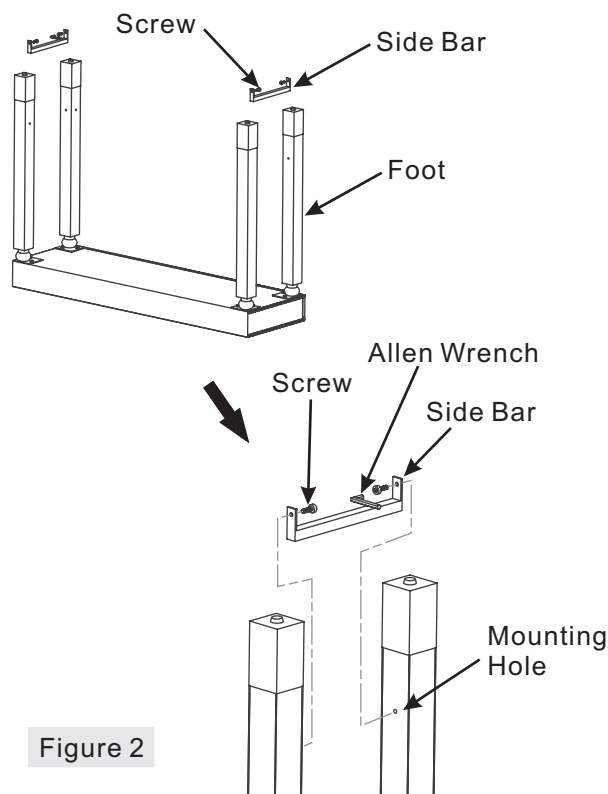
STEP 1 – Assemble Feet to Table Top

- Place the Table Top (A) onto a flat working surface with back facing you.
- Place the Foot (B) onto the Table Top (A). Line up the holes on Tabs and Mounting Holes on Table Top. By using Allen Wrench (E), thread Screws (F) into the Mounting Holes and hand tighten until snug to secure the Foot (B).



STEP 2 – Attach Side Arms to Feet

- Attach the holes on Side Bar (C) to Mounting Holes on the side of the Feet (B). By using Allen Wrench (E), thread Screws (F) into the Mounting Holes on Feet to secure Side Bars (C). Hand tighten until snug.



Thank you for purchasing a Quoizel product.

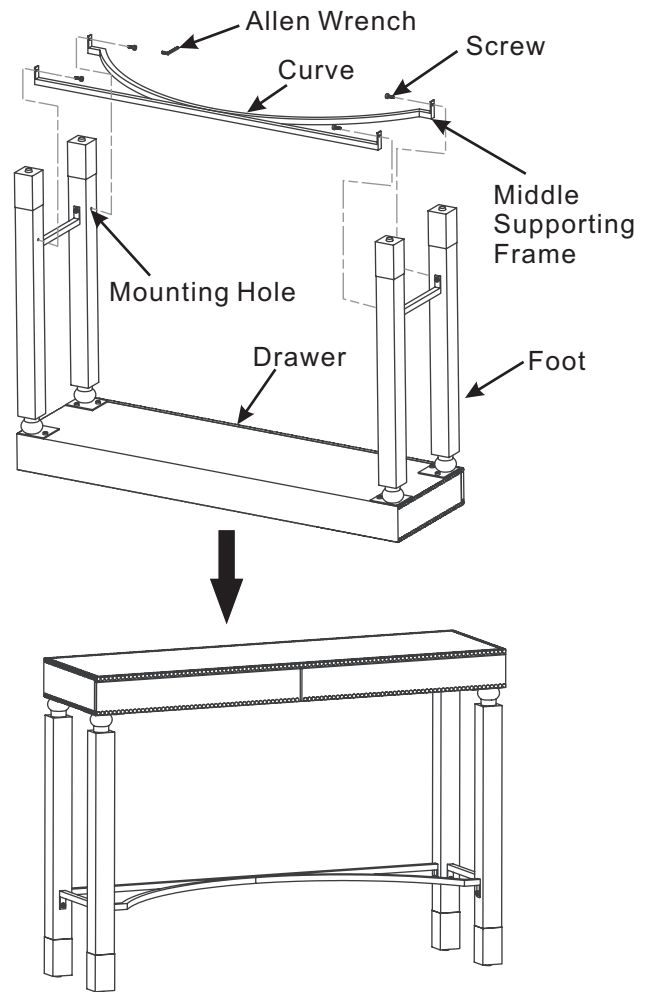
Need assistance with parts or assembly? Call Quoizel customer service at 1-631-273-2700
or visit us on-line at www.quoizel.com

Assembly Instruction Sheet #IS-CKSY1480DL For Style CKSY1480DL

STEP 3 – Assemble Middle Supporting Frame

- A. Attach the holes on the Middle Supporting Frame (D) to Mounting Holes on the side of Feet (B). Please make sure the Curve side of the frame towards drawer side. By using Allen Wrench (E), thread Screws (F) into Mounting Holes on Feet to secure Middle Supporting Frame (D). Hand tighten until snug.

Your assemble is completed and ready to use. Place the table to your desired location.



Thank you for purchasing a Quoizel product.

Need assistance with parts or assembly? Call Quoizel customer service at 1-631-273-2700
or visit us on-line at www.quoizel.com