

Quoizel, Inc.  
6 Corporate Parkway  
Goose Creek, SC  
29445

Customer Service  
Phone 631.273.2700  
Fax 631.231.7102  
www. quoizel. com

## Assembly Instruction Sheet #IS-FMAG8612C For Style FMAG8612C

**Tools Required:** Flathead screwdriver, Phillips screwdriver, pliers, wire cutters, wire strippers, electrical tape, safety glasses.

**Bulb Recommended:** (2) G9 Base Frosted G9 Halogen 75W Maximum

**Estimated Assembly Time:** 20-30 minutes

**Preparation:** Identify and inspect all parts before beginning installation. Check package content list and diagrams below to be sure all parts are present. If any parts are missing or damaged, do not attempt to assemble, install, or operate the fixture. Contact customer service for replacement parts.



### Warnings and Cautions

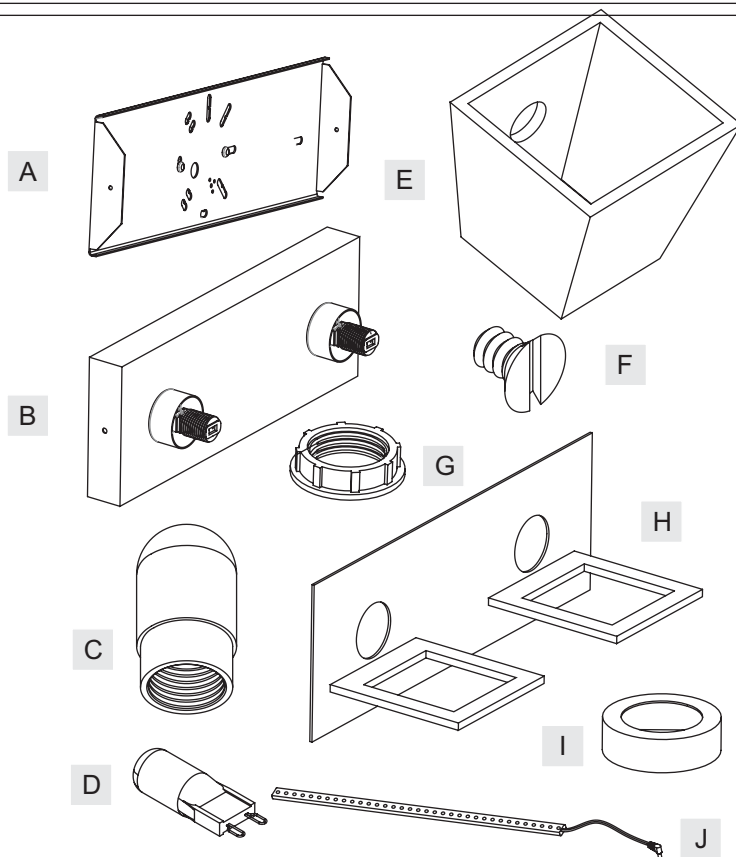
Turn off electricity at circuit breaker or main fuse box before installation. Consult a licensed electrician if in doubt.

These instructions are provided for your safety. It is very important you read them completely before installing the fixture. We strongly recommend that a licensed, professional electrician perform the installation.

Disconnect fixture from power source before replacing bulbs. Make sure bulbs are given sufficient time to cool before removal. Do not subject glass parts to any shock while in operation or shattering may result.

### Package Contents

Part	Description	Quantity
A	Inner Backplate	1 pc.
B	Fixture Body	1 pc.
C	Bulb Shield	2 pcs.
D	G9 Bulb	2 pcs.
E	Shade	2 pcs.
F	Mounting Screw	2 pcs.
G	Socket Collar	2 pcs.
H	Shade Holder	1 pc.
I	Steel Collar	2 pcs.
J	LED Strip	1 pc.

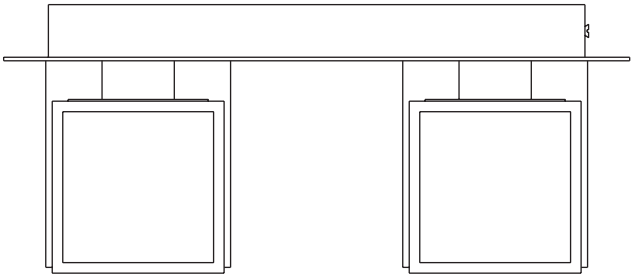
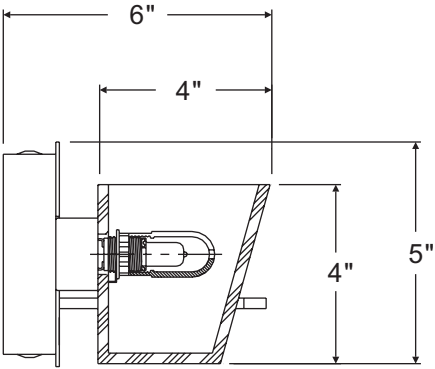
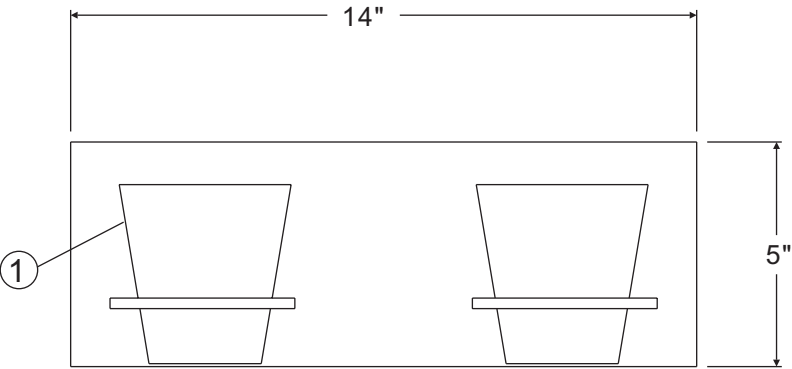
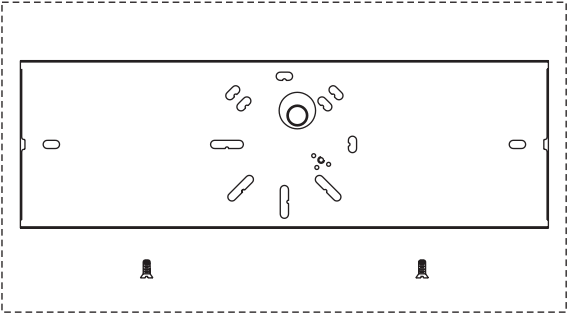


Thank you for purchasing a Quoizel product.

Need assistance with parts or assembly? Call Quoizel customer service at 1-631-273-2700  
or visit us on-line at [www. quoizel. com](http://www. quoizel. com)

FMAG8612C

FINISH: POLISHED CHROME



(2)75W Frosted  
G9 Halogen Bulbs  
(Supplied)

NOTE: ALL DIMENSIONS ARE ROUNDED UP TO THE NEAREST 1/2"

NO.	PART NUMBER	REPLACEMENT PART DESCRIPTION	REQ.
1	G3107SH	SHADE CLEAR PRESSED/SANDBLASTED	2

## Assembly Instruction Sheet #IS-FMAG8612C For Style FMAG8612C

### STEP 1 – Attach Inner Backplate to Outlet Box

- Place the Inner Backplate (A) onto the Outlet Box and mark two points on the Wall surface from the Slot Holes.
- Remove the Inner Backplate and drill two holes from the two points for Wall Anchors. Insert the Wall Anchors into the drilled Holes.
- Attach the Inner Backplate (A) back onto the Outlet Box. Thread Outlet Box Screws (not supplied) into the Mounting Holes on the Outlet Box and thread the Self-tapping Screws (not supplied) into the Wall Anchors to secure the Inner Backplate. Hand tighten until snug.

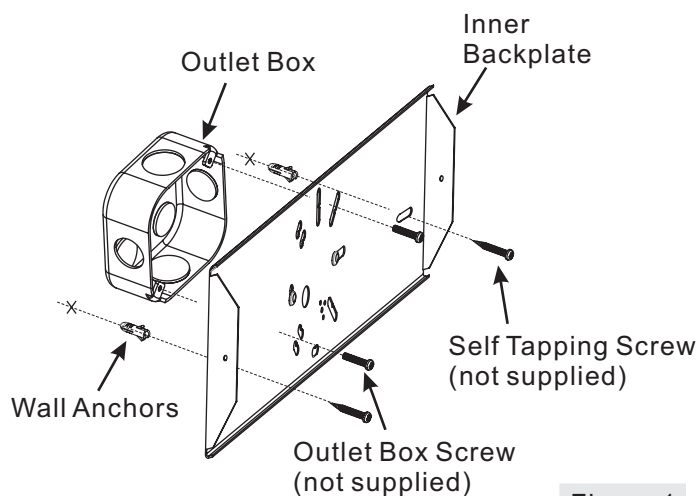


Figure 1

### STEP 2 – Locate LED Strip

- This lamp can be mounted two directions (on the top of backplate or on the bottom of backplate). Decide the mounting direction you are aware of. We only show one direction in the following steps.
- Remove the Decorative Lock Collar from the Hole on the Backplate. Pass the Round Plug of LED Strip (J) through the Hole on the backplate.

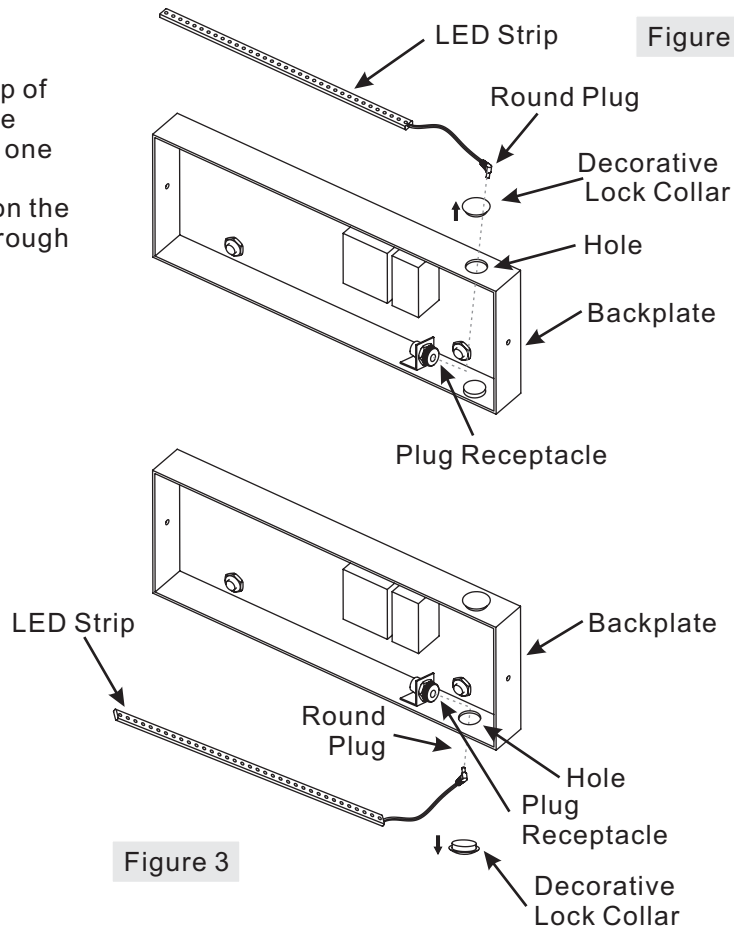


Figure 3

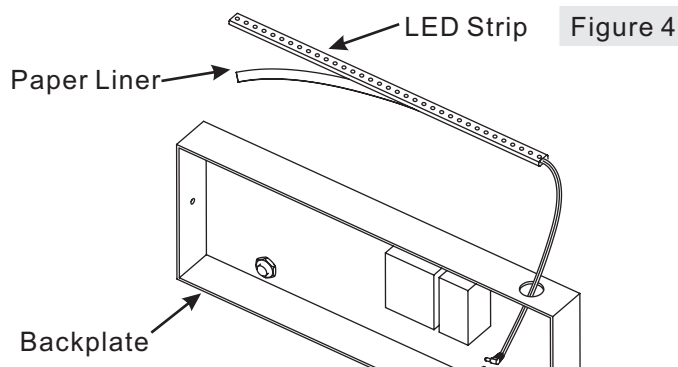
Thank you for purchasing a Quoizel product.

Need assistance with parts or assembly? Call Quoizel customer service at 1-631-273-2700  
or visit us on-line at [www. quozel. com](http://www. quozel. com)

## Assembly Instruction Sheet #IS-FMAG8612C For Style FMAG8612C

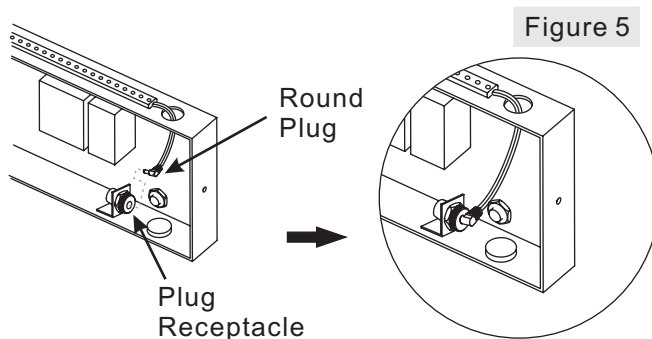
### STEP 3 – Affix LED Strip

- A. Remove the Paper Liner from back of the LED Strip (J) and then affix the LED Strip (J) onto the top edge of the Backplate.



### STEP 4 – Connect LED Strip

- A. Insert the Round Plug of the LED Strip (J) into the Plug Receptacle in the Backplate.



### STEP 5 – Make Wire Connections

- A. Use standard wire connectors to make all wire connections. (Connectors are not included with fixture.) Strip and prepare wire ends according to instructions supplied with connectors.
- B. Connect White Supply Wire from the Outlet Box to White Wire from Flip Switch Device.
- C. Connect Black (or Red) Supply Wire from the Outlet Box to Black Wire from Flip Switch Device.
- D. Connect Ground Wire from the Outlet Box to Green Ground Screw on Fixture Body (B).
- E. Twist connectors until wires are tightly joined together.
- F. Wrap each connection with approved electrical tape and carefully stuff all the connected wires into the Outlet Box.

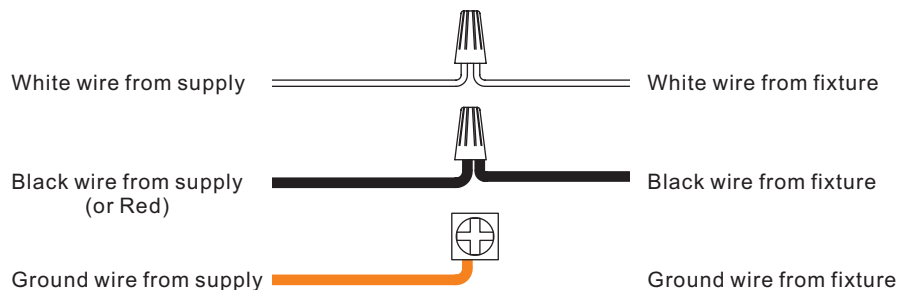
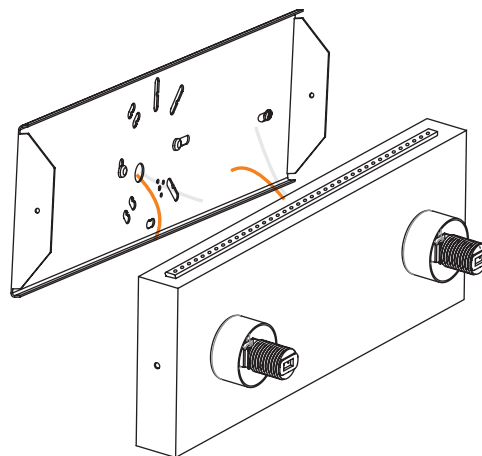


Figure 6

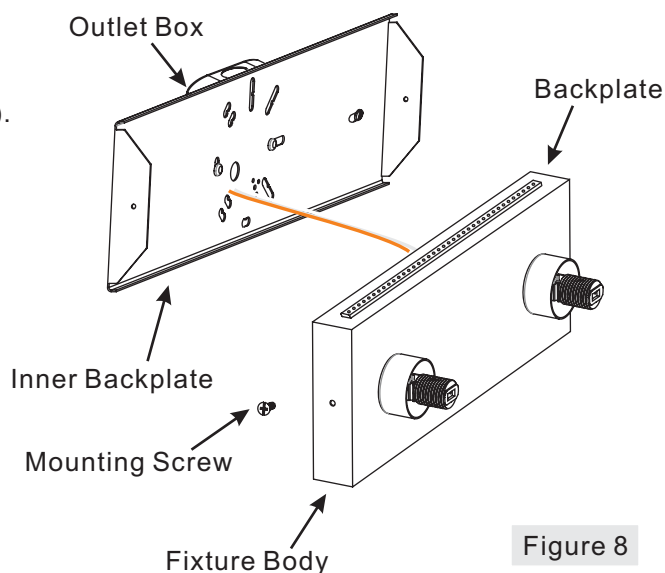
Thank you for purchasing a Quoizel product.

Need assistance with parts or assembly? Call Quoizel customer service at 1-631-273-2700  
or visit us on-line at [www.quoizel.com](http://www.quoizel.com)

# Assembly Instruction Sheet #IS-FMAG8612C For Style FMAG8612C

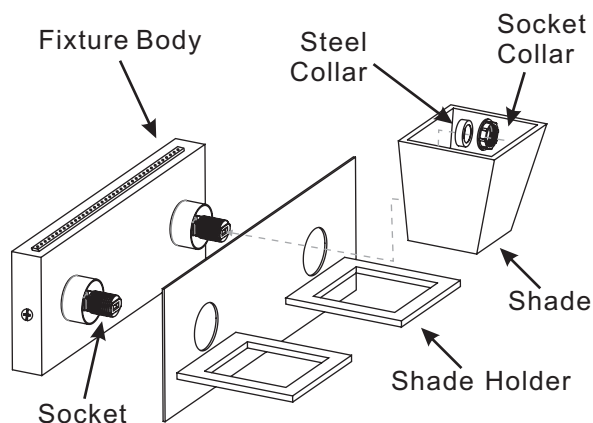
## STEP 6 – Attach Fixture Body to Outlet Box

- A. Attach the Backplate of Fixture Body (B) over the Inner Backplate (A) and secure with the Mounting Screws (F). Flathead screwdriver tighten until snug.



## STEP 7 – Attach Shade to Fixture Body

- A. Place the Shade Holder (H) , Shade (E) and Steel Collar (I) over the Socket properly. Secure with the Socket Collar (G). Hand tighten until snug.



Thank you for purchasing a Quoizel product.

Need assistance with parts or assembly? Call Quoizel customer service at 1-631-273-2700  
or visit us on-line at [www.quoizel.com](http://www.quoizel.com)

## Assembly Instruction Sheet #IS-FMAG8612C For Style FMAG8612C

### STEP 8 – Install Bulb and Bulb Shield

- A. This fixture uses Frosted G9 Halogen Bulbs. Maximum 75 watts.
- B. Insert bulb and seat properly into place.
- C. Screw Bulb Shield (C) onto the Socket and hand tighten until snug.

Your fixture is now assembled and ready to use.  
Enjoy!

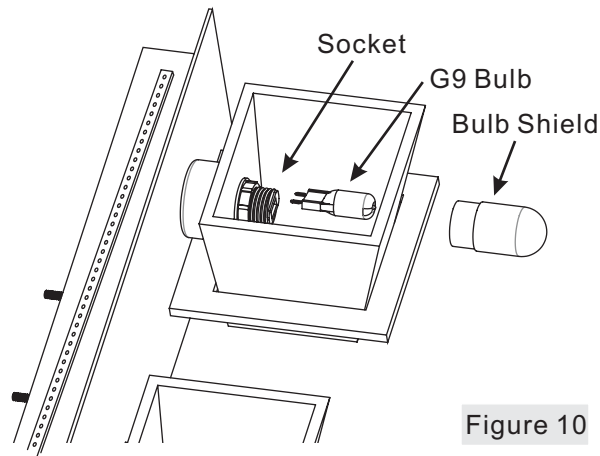


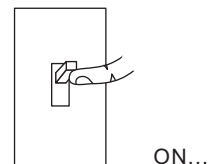
Figure 10

### SWITCHING MODE

The switching features of the product allows for you to change your lighting mode from halogen to LED.

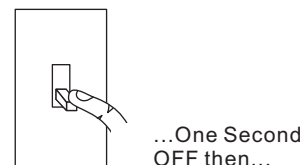
#### STEP 9:

- a. Flip the switch “ON” and the halogen lamps illuminates.



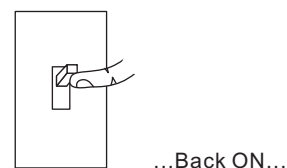
#### STEP 10:

- a. Flip the switch “OFF” to turn off the halogen lamps for one second.



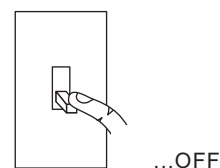
#### STEP 11:

- a. Flip the switch “ON” to turn the LED lamps ON.



#### STEP 12:

- a. Flip the switch “OFF” to turn off LED lamps.



#### STEP 13:

- a. Sequence begins over.

**Note:** When no switch has occurred for 30 minutes, the halogen lights are programmed to come on first.

Thank you for purchasing a Quoizel product.

Need assistance with parts or assembly? Call Quoizel customer service at 1-631-273-2700  
or visit us on-line at [www. quoizel. com](http://www. quoizel. com)

# Assembly Instruction Sheet #IS-FMAG8612C

## For Style FMAG8612C

### CAUTION FOR BULB REPLACING

- A. When replace bulb, turn off power and allow lamp to cool. For safety purpose, wear gloves and eye protection.
- B. If bulb is scratched or cracked, DO NOT use the lamp to avoid breakage during use or installation.
- C. Use only in fixtures rated for lamps wattage and voltage.
- D. Lamp operate under high pressure generating intense heat. Prevent contact with liquid and combustible materials.

**Thank you for purchasing a Quoizel product.**

**Need assistance with parts or assembly? Call Quoizel customer service at 1-631-273-2700  
or visit us on-line at [www.quoizel.com](http://www.quoizel.com)**