

Quoizel, Inc.
6 Corporate Parkway
Goose Creek, SC
29445

Customer Service
Phone 631.273.2700
Fax 631.231.7102
www. quoizel. com

Assembly Instruction Sheet #IS-TFBK988IO For Style TFBK988IO

Tools Required: None

Bulb Recommended: (2) Medium Base 100W Maximum

Estimated Assembly Time: 15-20 minutes

Preparation: Identify and inspect all parts before beginning installation. Check package content list and diagrams below to be sure all parts are present. If any parts are missing or damaged, do not attempt to assemble, install, or operate the fixture. Contact customer service for replacement parts.



Warnings and Cautions

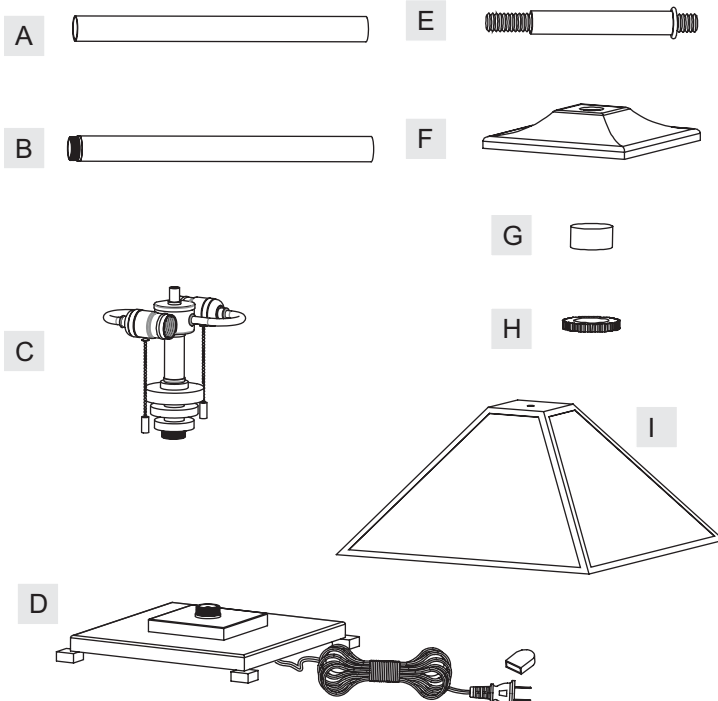
Turn off electricity at circuit breaker or main fuse box before installation. Consult a licensed electrician if in doubt.

These instructions are provided for your safety. It is very important you read them completely before installing the fixture. We strongly recommend that a licensed, professional electrician perform the installation.

Disconnect fixture from power source before replacing bulbs. Make sure bulbs are given sufficient time to cool before removal. Do not subject glass parts to any shock while in operation or shattering may result.

Package Contents

Part	Description	Quantity
A	Rod	1 pc.
B	Rod with Connector	2 pcs.
C	Socket Assembly	1 pc.
D	Base	1 pc.
E	Center Stem	1 pc.
F	Cap	1 pc.
G	Finial	1 pc.
H	Knurled Nut	1 pc.
I	Shade	1 pc.

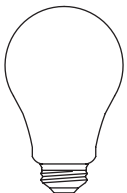
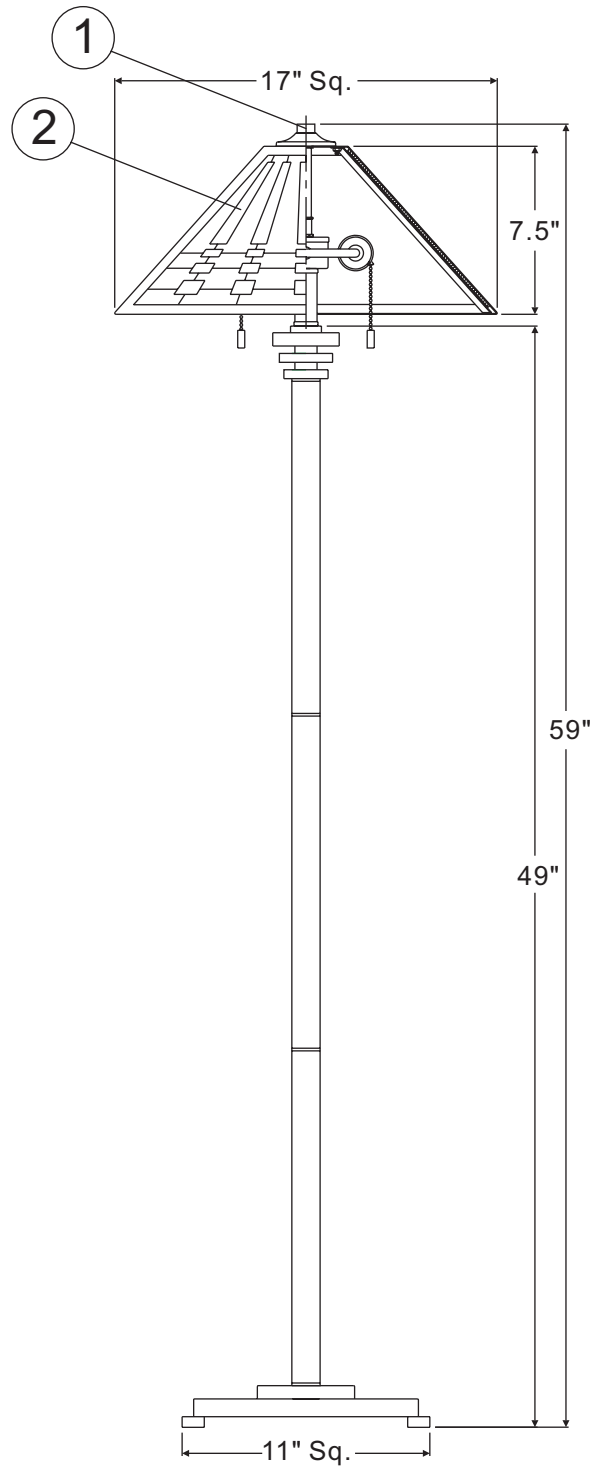


Thank you for purchasing a Quoizel product.

**Need assistance with parts or assembly? Call Quoizel customer service at 1-631-273-2700
or visit us on-line at www. quoizel. com**

TFBK988IO

FINISH: INDIO BRONZE



(2)100W A19
Medium Base Bulbs
(Not Supplied)

NOTE: ALL DIMENSIONS ARE ROUNDED UP TO THE NEAREST 1/2"

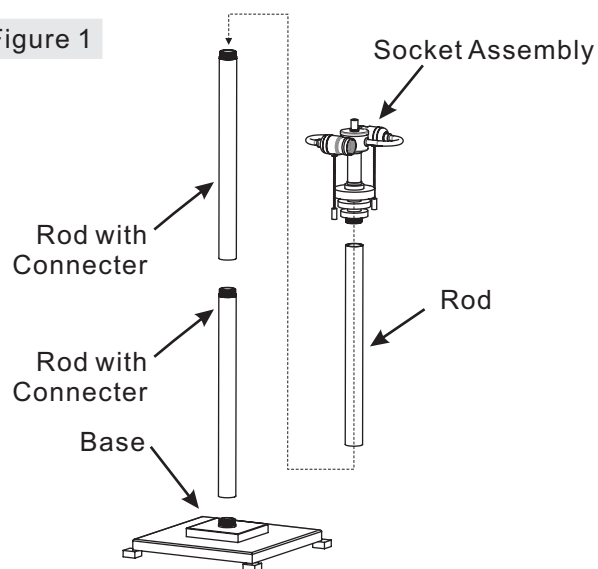
NO.	PART NUMBER	REPLACEMENT PART DESCRIPTION	REQ.
1	M2273FIIO	FINIAL INDIO BRONZE 0.375"H	1
2	G2886SH	SHADE TIFFANY 14"SQ X 17"SQ	1

Assembly Instruction Sheet #IS-TFBK988IO For Style TFBK988IO

STEP 1 – Attach Rod and Socket Assembly to Base

- A. Determine the Rods (A/B) to be assembled to the Base (D). Hand tighten until snug
- B. Thread the Socket Assembly (C) into the Rod (A) together. Hand tighten until snug

Figure 1



STEP 2 – Attach Center Stem and Knurled Nut

- A. Thread the beaded end of Center Stem (E) into the Coupling upside of the Socket Assembly (C). Hand tighten until snug
- B. Thread the Knurled Nut (H) onto the other end of Center Stem (E). Hand tighten until snug

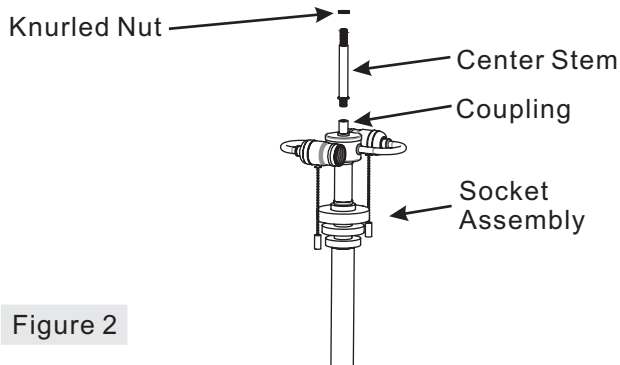


Figure 2

STEP 3 – Install Shade and Finial

- A. Pass the Shade (I) and Cap (F) over the end of Center Stem (E) in turn. Secure by threading the Finial (G) onto the Center Stem (E). Hand tighten until snug

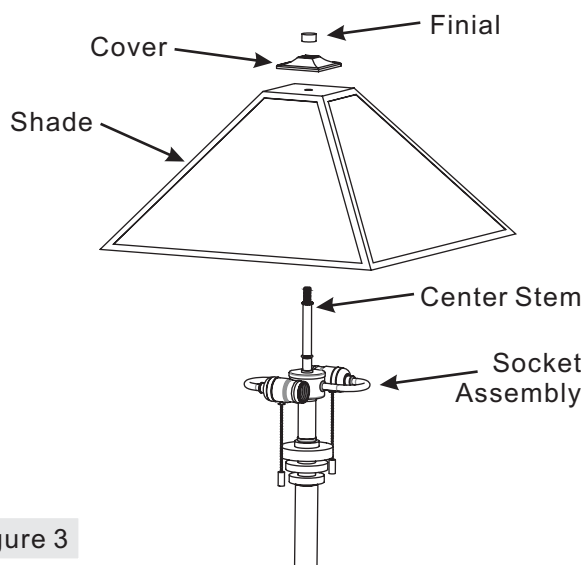


Figure 3

Thank you for purchasing a Quoizel product.
Need assistance with parts or assembly? Call Quoizel customer service at 1-631-273-2700
or visit us on-line at www. quoizel. com

Assembly Instruction Sheet #IS-TFBK988IO For Style TFBK988IO

STEP 4 – Install Bulb

- A. This fixture uses standard bulb with standard screw base . Maximum 100 watts.
- B. Insert bulb and screw snugly into place.

Your floor lamp is now assembled and ready to use.
Enjoy!

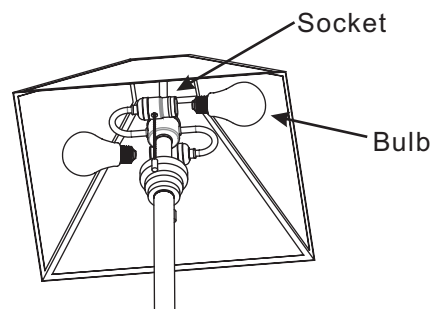


Figure 4

Thank you for purchasing a Quoizel product.
Need assistance with parts or assembly? Call Quoizel customer service at 1-631-273-2700
or visit us on-line at www.quoizel.com