

# QUOIZEL

6 CORPORATE PARKWAY  
GOOSE CREEK, SC. 29445  
www.quoizel.com

Quoizel, Inc.  
6 Corporate Parkway  
Goose Creek, SC  
29445

Customer Service  
Phone 631.273.2700  
Fax 631.231.7102  
www.quoizel.com

## Assembly Instruction Sheet #IS-TFSC2816WT For Style TFSC2816WT

**Tools Required:** Flathead screwdriver, Phillips screwdriver, pliers, wire cutters, wire strippers, electrical tape, safety glasses.

**Bulb Recommended:** (4) Medium Base 100W Maximum

**Estimated Assembly Time:** 20-30 minutes

**Preparation:** Identify and inspect all parts before beginning installation. Check package content list and diagrams below to be sure all parts are present. If any parts are missing or damaged, do not attempt to assemble, install, or operate the fixture. Contact customer service for replacement parts.



### Warnings and Cautions

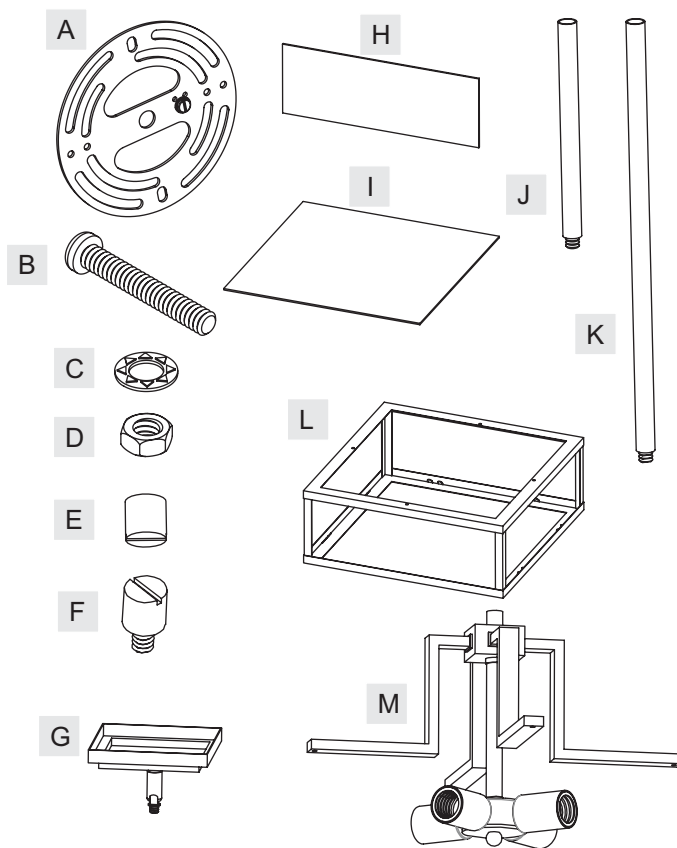
Turn off electricity at circuit breaker or main fuse box before installation. Consult a licensed electrician if in doubt.

These instructions are provided for your safety. It is very important you read them completely before installing the fixture. We strongly recommend that a licensed, professional electrician perform the installation.

Disconnect fixture from power source before replacing bulbs. Make sure bulbs are given sufficient time to cool before removal. Do not subject glass parts to any shock while in operation or shattering may result.

### Package Contents

Part	Description	Quantity
A	Crossbar	1 pc.
B	Mounting Screw	2 pcs.
C	Lock Washer	2 pcs.
D	Hex Nut	2 pcs.
E	Mounting Ball	2 pcs.
F	Lock Screw	4 pcs.
G	Ceiling Canopy	1 pc.
H	Side Tiffany	4 pcs.
I	Bottom Tiffany	1 pc.
J	6" Rod	2 pcs.
K	12" Rod	2 pcs.
L	Cage	1 pc.
M	Fixture Assembly	1 pc.

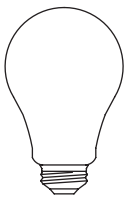
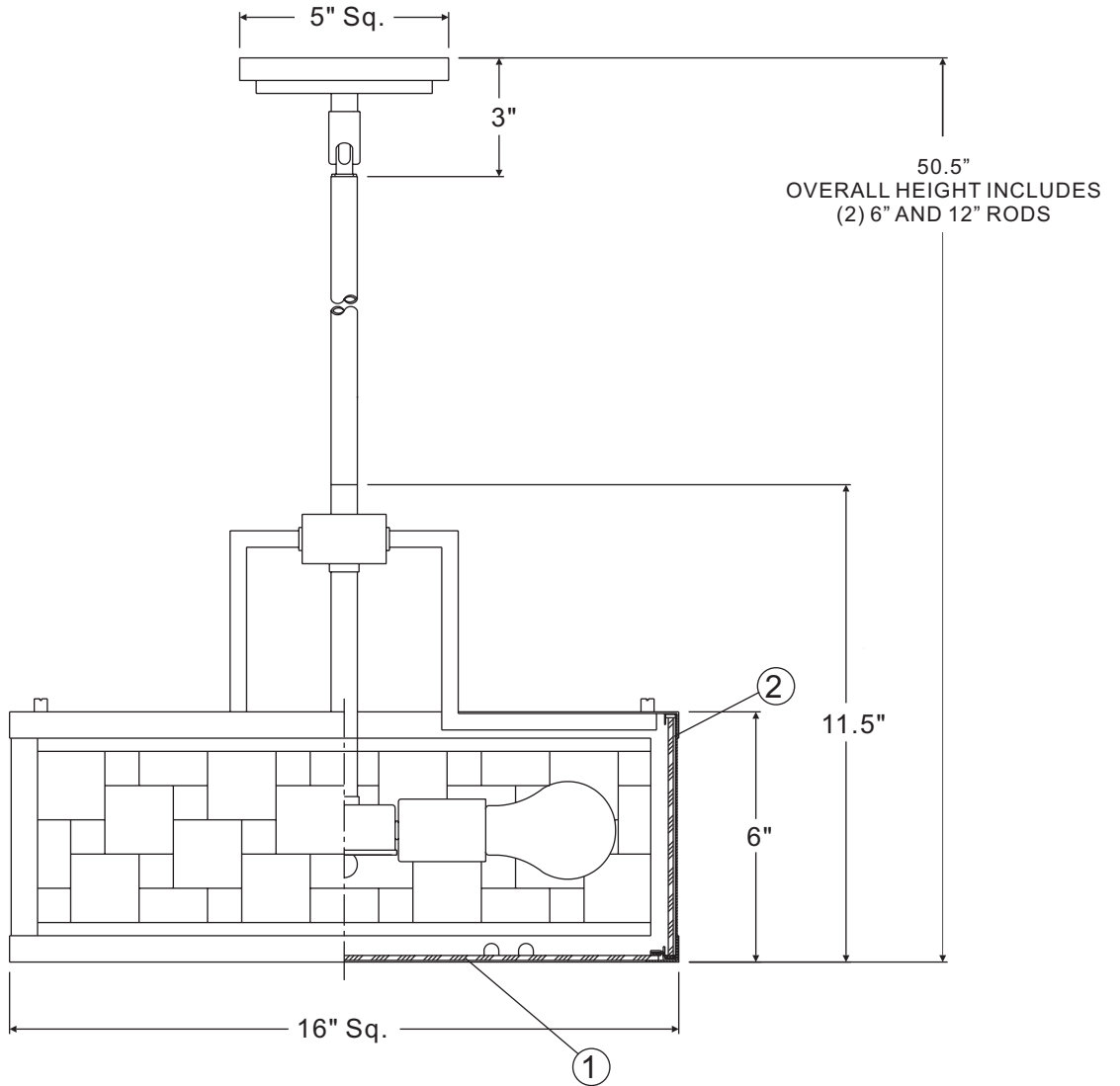
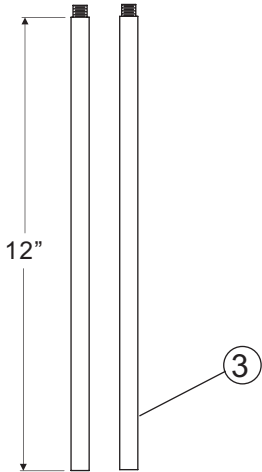
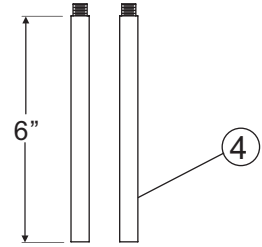
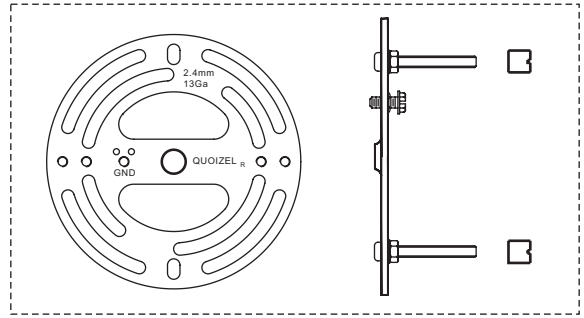


Thank you for purchasing a Quoizel product.

Need assistance with parts or assembly? Call Quoizel customer service at 1-631-273-2700  
or visit us on-line at [www.quoizel.com](http://www.quoizel.com)

TFSC2816WT

FINISH: WESTERN BRONZE



(4) 100W A19  
Medium Base Bulbs  
(Not Supplied)

NOTE: ALL DIMENSIONS ARE ROUNDED UP TO THE NEAREST 1/2"

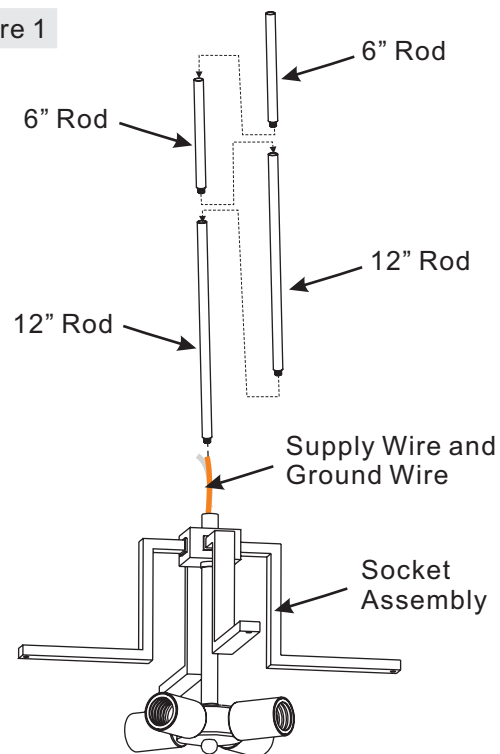
NO.	PART NUMBER	REPLACEMENT PART DESCRIPTION	REQ.
1	G2969PA	PANEL BOTTOM SANBLASTED 15"SQ	1 pc.
2	G2968PA	PANEL TIF 15.3/8"W X 5.5/8"H	4 pcs.
3	9012EXWT	ROD EXT WSTRN BRNZ 12"L X .5"D	2 pcs.
4	9006EXWT	ROD EXT WSTRN BRNZ 6"L X .5"D	2 pcs.

# Assembly Instruction Sheet #IS-TFSC2816WT For Style TFSC2816WT

## STEP 1 – Assemble Rods

- Determine the Rods (J/K) to be assembled to the Fixture Assembly (M) according to your hanging height.
- Pass Supply Wires and Ground Wire through the chosen Rods (J/K) and then thread the chosen Rods (J/K) and the Fixture Assembly (M) together. Hand tighten until snug.

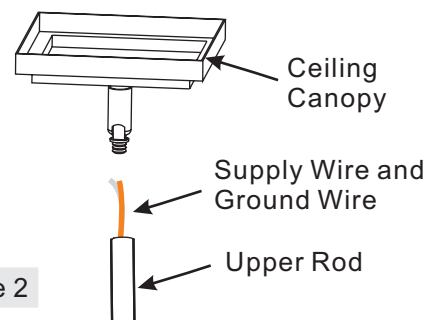
Figure 1



## STEP 2 – Assemble Ceiling Canopy to Upper Rod

- Pass Supply Wires and Ground Wire through the Ceiling Canopy (G) and then thread the Ceiling Canopy (G) and the Upper Rod together. Hand tighten until snug.

Figure 2



Thank you for purchasing a Quoizel product.

Need assistance with parts or assembly? Call Quoizel customer service at 1-631-273-2700  
or visit us on-line at [www.quoizel.com](http://www.quoizel.com)

## Assembly Instruction Sheet #IS-TFSC2816WT For Style TFSC2816WT

### STEP 3 – Assemble Bottom Panel and Side Panels

- Place the Bottom Tiffany (I) in the bottom of the Cage (L) and secure with Tabs in the Cage (L).
- Place the Side Tiffany (H) in the bottom of the Cage (L) and secure with Tabs in the Cage (L).

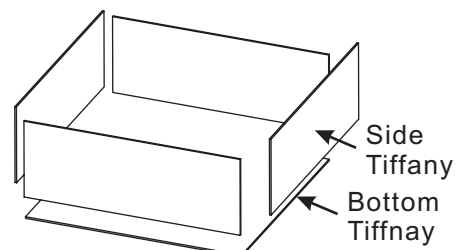
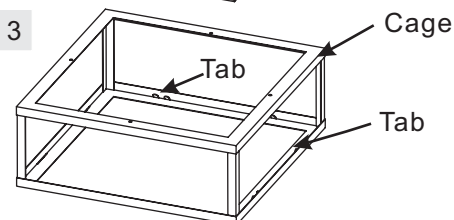


Figure 3



### STEP 4 – Assemble Cage

- Locate the Side Arms inside the Cage (L). Align mounting holes on the Side Arms to the holes on the top edge of the Cage (L). Secure by threading Lock Screw (F) into the Mounting Holes. Hand tighten until snug.

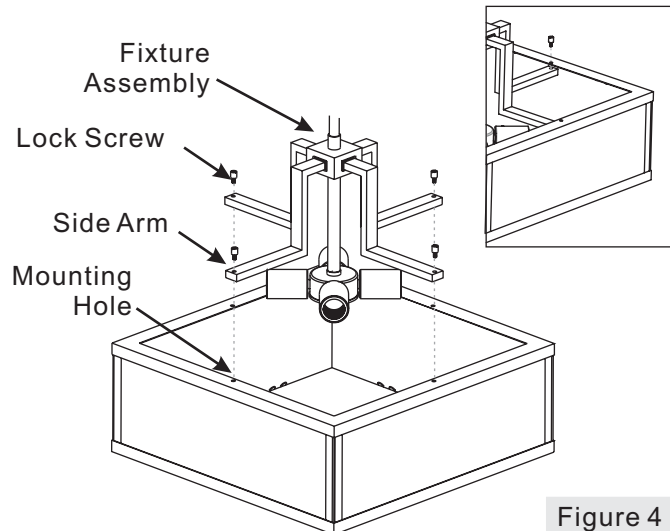


Figure 4

### STEP 5 – Attach Mounting Screws, Lock Washers and Hex Nuts to Crossbar

- Line up a set of holes on the Crossbar (A) and Holes on the Ceiling Canopy (G).
- Thread Mounting Screws (B) into the holes on the Crossbar (A), pass Lock Washers (C) and thread Hex Nut (D) onto the Mounting Screws (B). Hand tighten until snug.

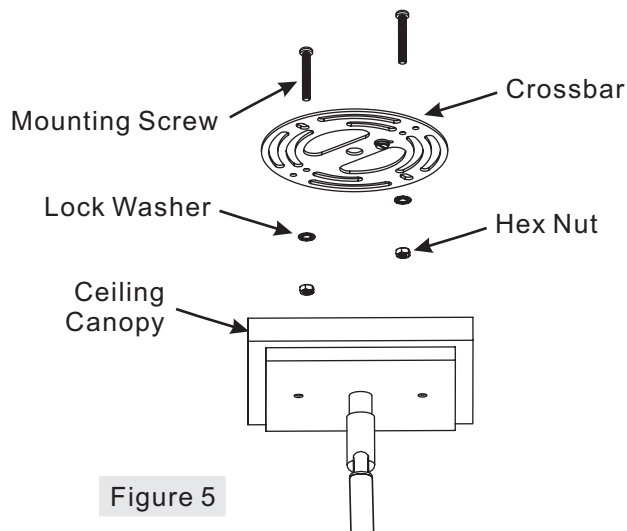


Figure 5

Thank you for purchasing a Quoizel product.

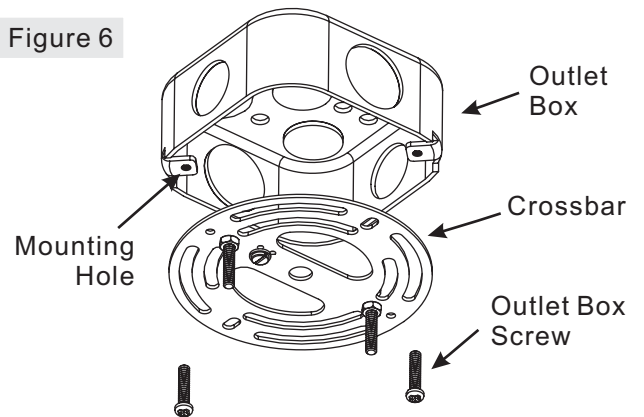
Need assistance with parts or assembly? Call Quoizel customer service at 1-631-273-2700  
or visit us on-line at [www. quozel. com](http://www. quozel. com)

# Assembly Instruction Sheet #IS-TFSC2816WT For Style TFSC2816WT

## STEP 6 – Attach Crossbar to Outlet Box

- A. Attach the Crossbar (A) to Outlet Box and secure by threading Outlet Box Screws (not supplied) into the Mounting Holes on the Outlet Box. Tighten until snug.

Figure 6



## STEP 7 – Make Wire Connections

- A. Use standard wire connectors to make all wire connections. (Connectors are not included with fixture.) Strip and prepare wire ends according to instructions supplied with connectors.
- B. Connect White Supply Wire from the Outlet Box to White Wire from fixture.
- C. Connect Black (or Red) Supply Wire from the Outlet Box to Black Wire from fixture.
- D. Connect Ground Wire from the Outlet Box to Ground Wire from fixture.
- E. Twist connectors until wires are tightly joined together.
- F. Wrap each connection with approved electrical tape and carefully stuff all the connected wires into the Outlet Box.

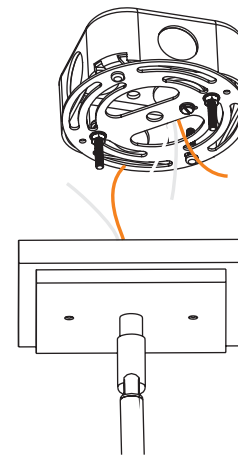


Figure 8

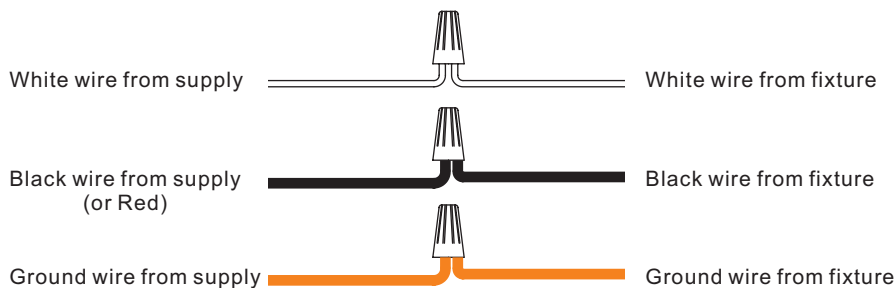


Figure 7

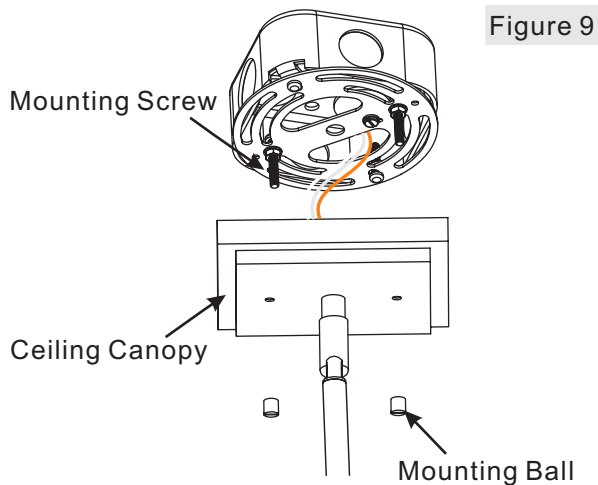
Thank you for purchasing a Quoizel product.

Need assistance with parts or assembly? Call Quoizel customer service at 1-631-273-2700  
or visit us on-line at [www.quoizel.com](http://www.quoizel.com)

## Assembly Instruction Sheet #IS-TFSC2816WT For Style TFSC2816WT

### STEP 8 – Attach Ceiling Canopy to Mounting Screw

- A. Place the Ceiling Canopy (G) over the Mounting Screws (B) and secure with Mounting Balls (E). Hand tighten until snug.

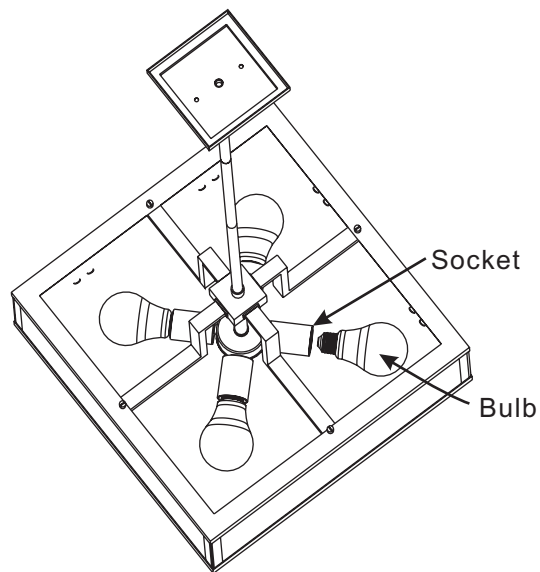


### STEP 9 – Install Bulb

- A. This fixture uses standard bulb with a standard screw base. Maximum 100 watts.  
B. Insert bulb and screw properly into place.

Your lamp mini pendant fixture is now assembled and ready to use. Enjoy!

Figure 10



Thank you for purchasing a Quoizel product.

Need assistance with parts or assembly? Call Quoizel customer service at 1-631-273-2700  
or visit us on-line at [www. quoizel. com](http://www. quoizel. com)