

Quoizel, Inc.
6 Corporate Parkway
Goose Creek, SC
29445

Customer Service
Phone 631.273.2700
Fax 631.231.7102
www.quoizel.com

Assembly Instruction Sheet #IS-UPRZ8603C For Style UPRZ8603C

Tools Required: Flathead screwdriver, Phillips screwdriver, pliers, wire cutters, wire strippers, electrical tape, safety glasses.

Bulb Recommended: (3) G9 Base Frosted G9 Halogen 75W Maximum

Estimated Assembly Time: 20-30 minutes

Preparation: Identify and inspect all parts before beginning installation. Check package content list and diagrams below to be sure all parts are present. If any parts are missing or damaged, do not attempt to assemble, install, or operate the fixture. Contact customer service for replacement parts.



Warnings and Cautions

Turn off electricity at circuit breaker or main fuse box before installation. Consult a licensed electrician if in doubt.

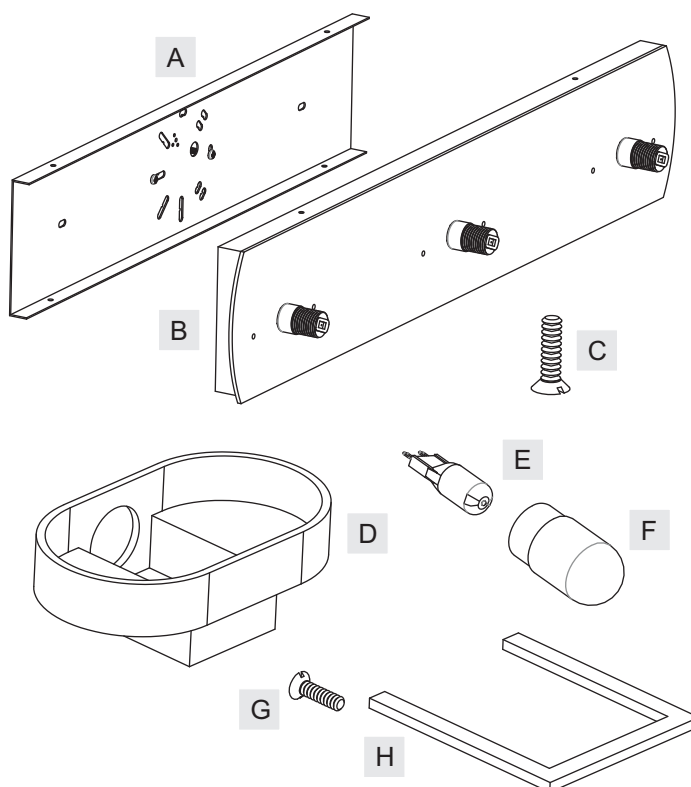
These instructions are provided for your safety. It is very important you read them completely before installing the fixture. We strongly recommend that a licensed, professional electrician perform the installation.

Disconnect fixture from power source before replacing bulbs. Make sure bulbs are given sufficient time to cool before removal. Do not subject glass parts to any shock while in operation or shattering may result.

Do not touch the bulb with bare hands use a cloth or glove.

Package Contents

Part	Description	Quantity
A	Inner Backplate	1 pc.
B	Backplate	1 pc.
C	Mounting Screw	4 pcs.
D	Shade	3 pcs.
E	G9 Bulb	3 pcs.
F	Bulb Shield	3 pcs.
G	Lock Screw	6 pcs.
H	Shade Holder	3 pcs.

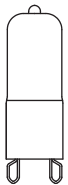
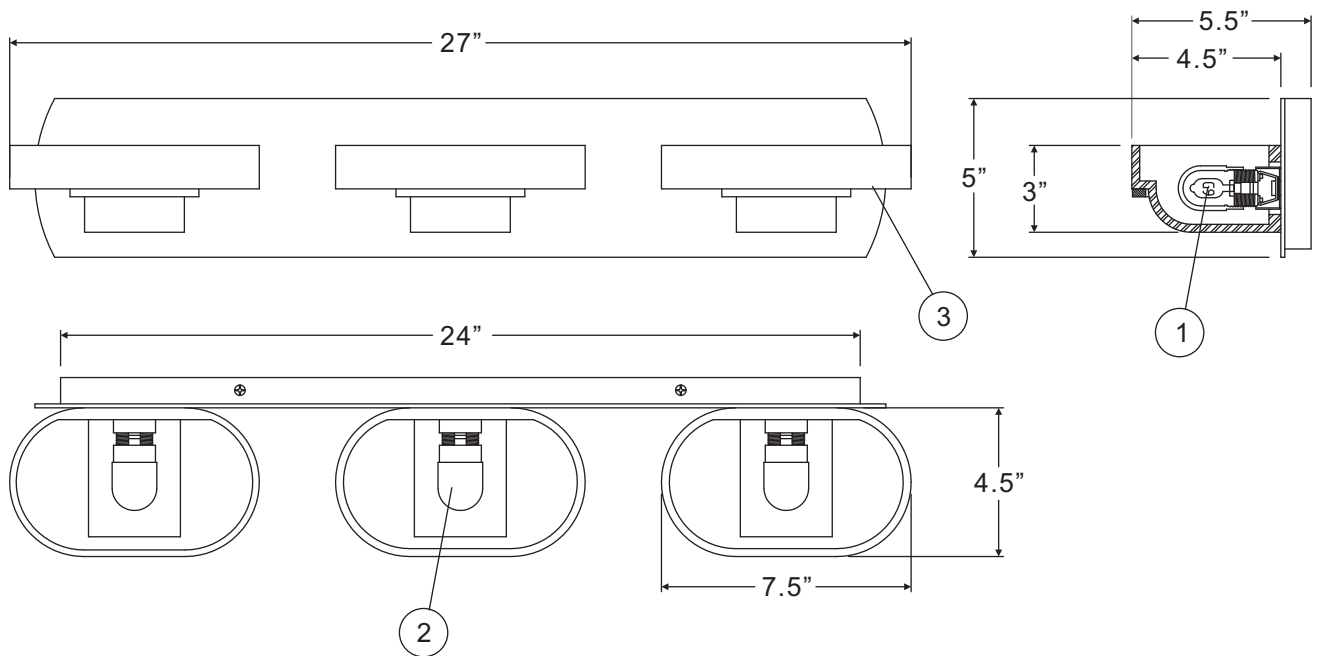


Thank you for purchasing a Quoizel product.

Need assistance with parts or assembly? Call Quoizel customer service at 1-631-273-2700
or visit us on-line at www.quoizel.com

UPRZ8603C

FINISH: POLISHED CHROME



(3)75W Frosted
G9 Halogen Bulbs
(Supplied)

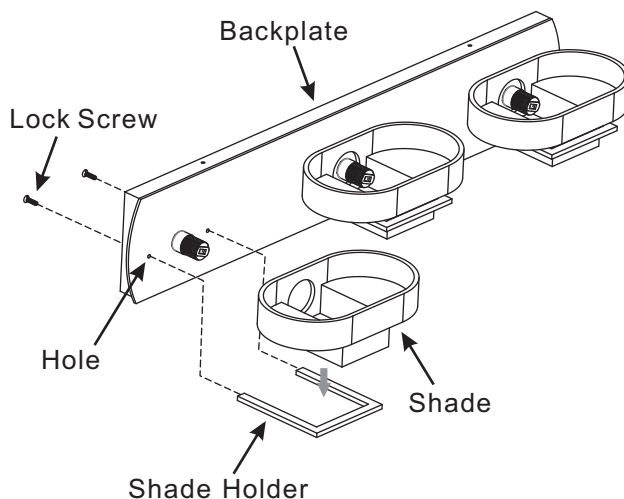
NOTE: ALL DIMENSIONS ARE ROUNDED UP TO THE NEAREST 1/2"

NO.	PART NUMBER	REPLACEMENT PART DESCRIPTION	REQ.
1	I828SF	BULB 120V 75W HALOGEN G9 FROSTED	3
2	G2912SH	BULB SHIELD GLASS 1"D X 2"H	3
3	G3214SH	SHADE ETCHED GLASS PAINTED	3

Assembly Instruction Sheet #IS-UPRZ8603C For Style UPRZ8603C

STEP 1 – Attach Fixture Body to Outlet Box

- Place the Shade (D) onto the Shade Holder (H) as arrow shown.
- Attach the Shade Holder (H) with Shade (D) to the Backplate (B). Align mounting holes on the ends of the Shade Holder (H) to the Holes on the Backplate (B).
- Thread Lock Screws (G) into the ends of the Shade Holder (H) to secure above parts. Tighten until snug.



STEP 2 – Attach Inner Backplate to Outlet Box

- Attach the Inner Backplate (A) to Outlet Box and line up the mounting holes on the Outlet Box with a set of holes on the Inner Backplate (A).
- Mark two points on the wall from the Slot Holes. Remove the Inner Backplate (A) from the Outlet Box.
- Drill proper holes from the two marks on the Wall. Push the Wall Anchors (not supplied) inside of the drilled holes.
- Place the Inner Backplate (A) onto the Outlet Box. Screw the Outlet Box Screws into the mounting holes on the Outlet Box and thread the Self-tapping Screws (not supplied) into the Wall Anchors to secure the Inner Backplate (A). Hand tighten until snug.

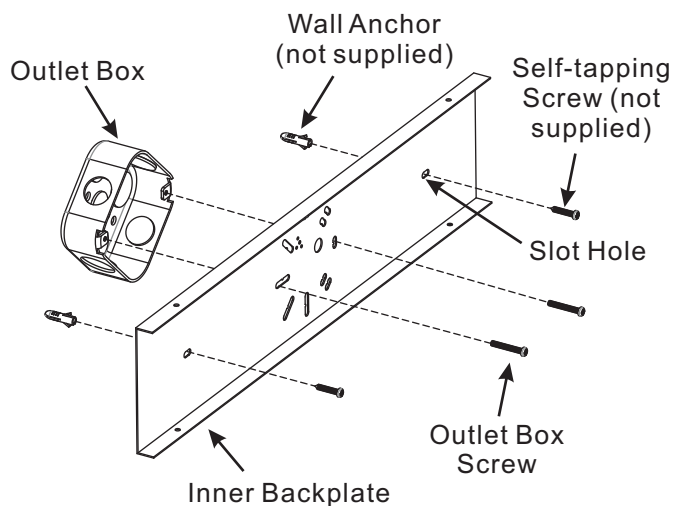


Figure 2

Thank you for purchasing a Quoizel product.

Need assistance with parts or assembly? Call Quoizel customer service at 1-631-273-2700
or visit us on-line at www. quozel. com

Assembly Instruction Sheet #IS-UPRZ8603C For Style UPRZ8603C

STEP 3 – Make Wire Connections

- Use standard wire connectors to make all wire connections. (Connectors are not included with fixture.) Strip and prepare wire ends according to instructions supplied with connectors.
- Connect White Supply Wire from the Outlet Box to White Wire from fixture.
- Connect Black (or Red) Supply Wire from the Outlet Box to Black Wire from fixture.
- Connect Ground Wire from the Outlet Box to Ground Wire from fixture.
- Twist connectors until wires are tightly joined together.
- Wrap each connection with approved electrical tape and carefully stuff all the connected wires into the Outlet Box.

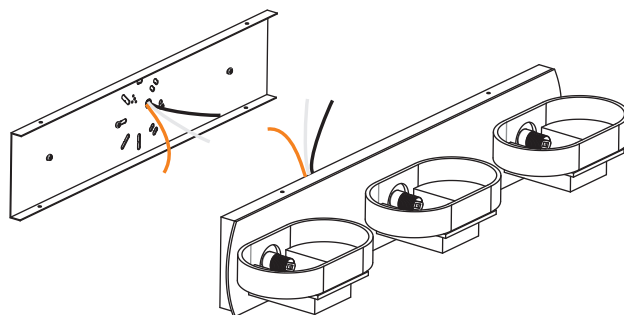


Figure 3

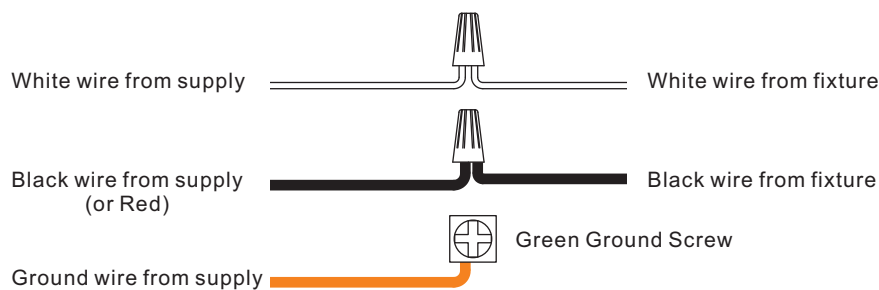


Figure 4

STEP 4 – Attach Backplate to Inner Backplate

- Attach the Backplate (B) onto the Inner Backplate (B). Align holes on the top and bottom of the Backplate (B) to Mounting Holes on the top and bottom of the Inner Backplate (A). Secure by threading the Mounting Screws (C) into the Mounting Holes on the Inner Backplate (A). Hand tighten until snug.

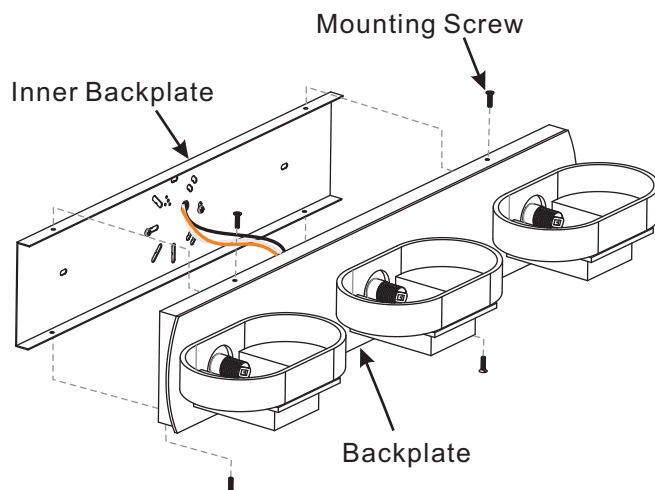


Figure 5

Thank you for purchasing a Quoizel product.

Need assistance with parts or assembly? Call Quoizel customer service at 1-631-273-2700
or visit us on-line at www.quoizel.com

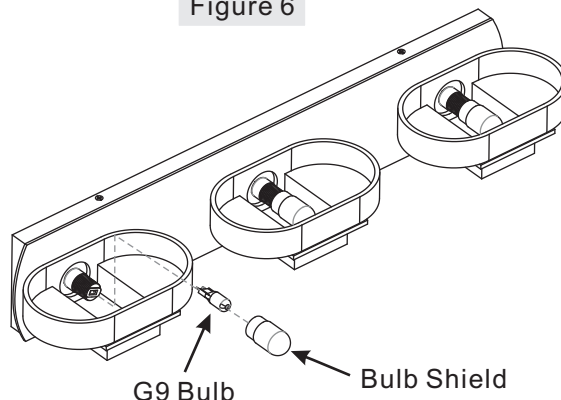
Assembly Instruction Sheet #IS-UPRZ8603C For Style UPRZ8603C

STEP 5 – Install Bulb and Bulb Shield

- A. This fixture uses JCD G9 Frosted Bulbs with G9 Base.
Maximum 75 watts.
- B. Insert bulb and seat properly into place.
IMPORTANT: Do not touch the bulb with bare hands use a cloth or glove.
- C. Screw Bulb Shield (F) onto the Socket and hand tighten until snug.

Your lamp wall fixture is now assembled and ready to use.
Enjoy!

Figure 6



CAUTION FOR BULB REPLACING

- A. When replace bulb, turn off power and allow lamp to cool. For safety purpose, wear gloves and eye protection.
- B. If bulb is scratched or cracked, DO NOT use the lamp to avoid breakage during use or installation.
- C. Use only in fixtures rated for lamps wattage and voltage.
- D. Lamp operate under high pressure generating intense heat. Prevent contact with liquid and combustible materials.

Thank you for purchasing a Quoizel product.
Need assistance with parts or assembly? Call Quoizel customer service at 1-631-273-2700
or visit us on-line at www. quoizel. com