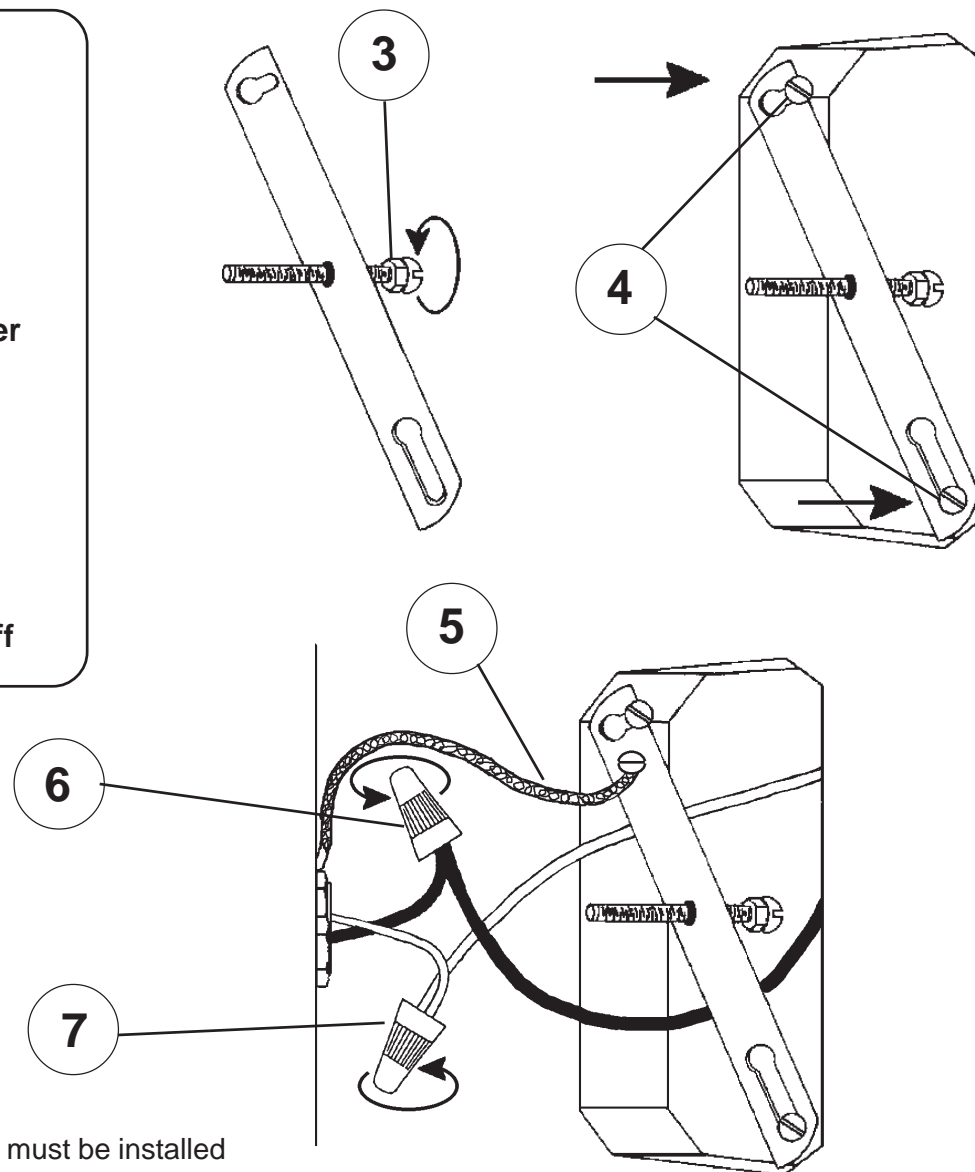
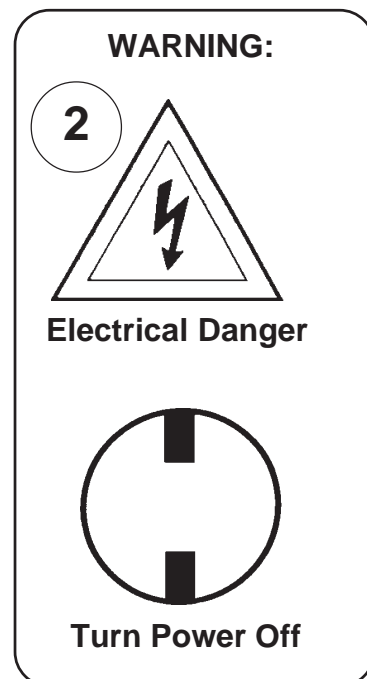
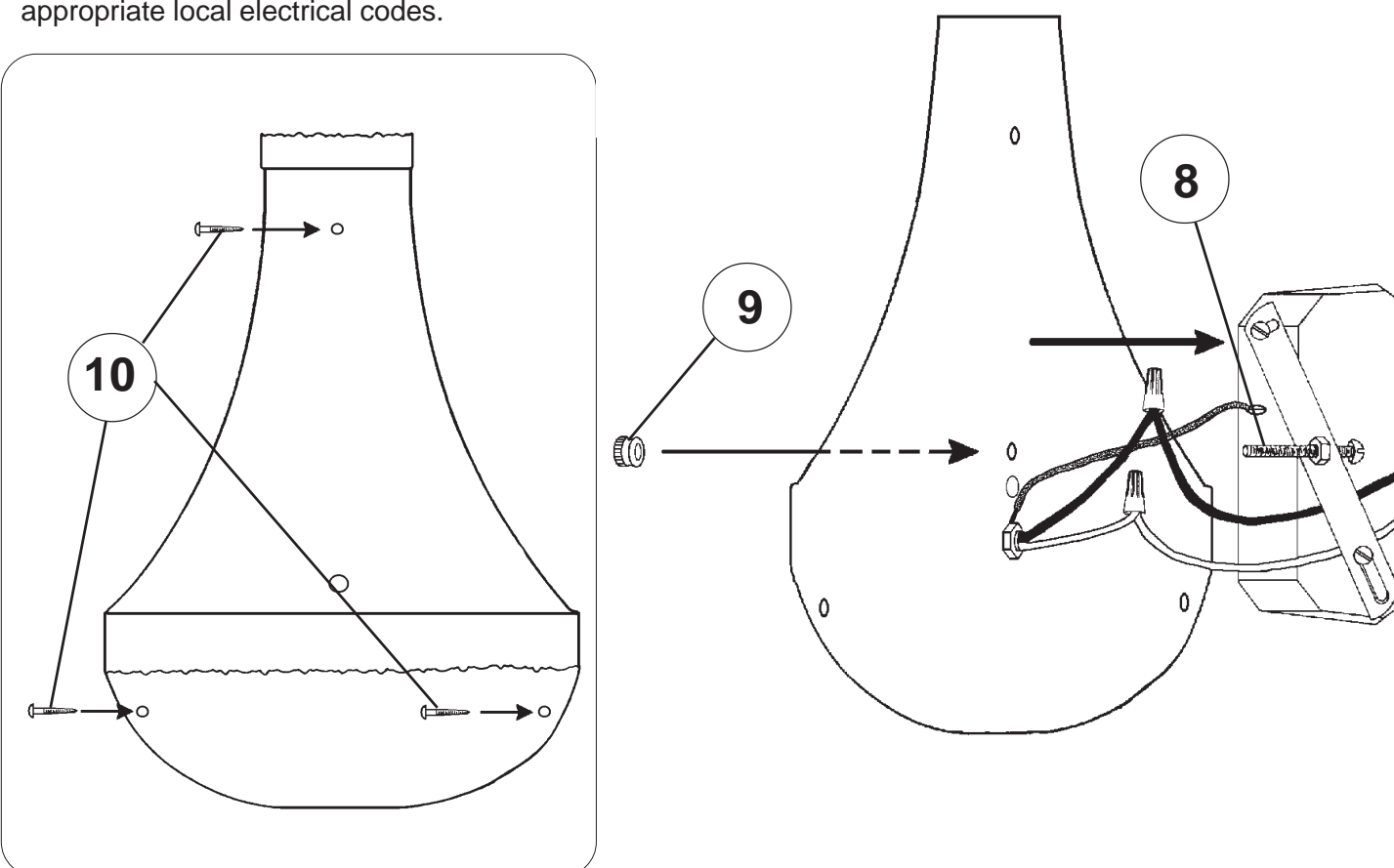


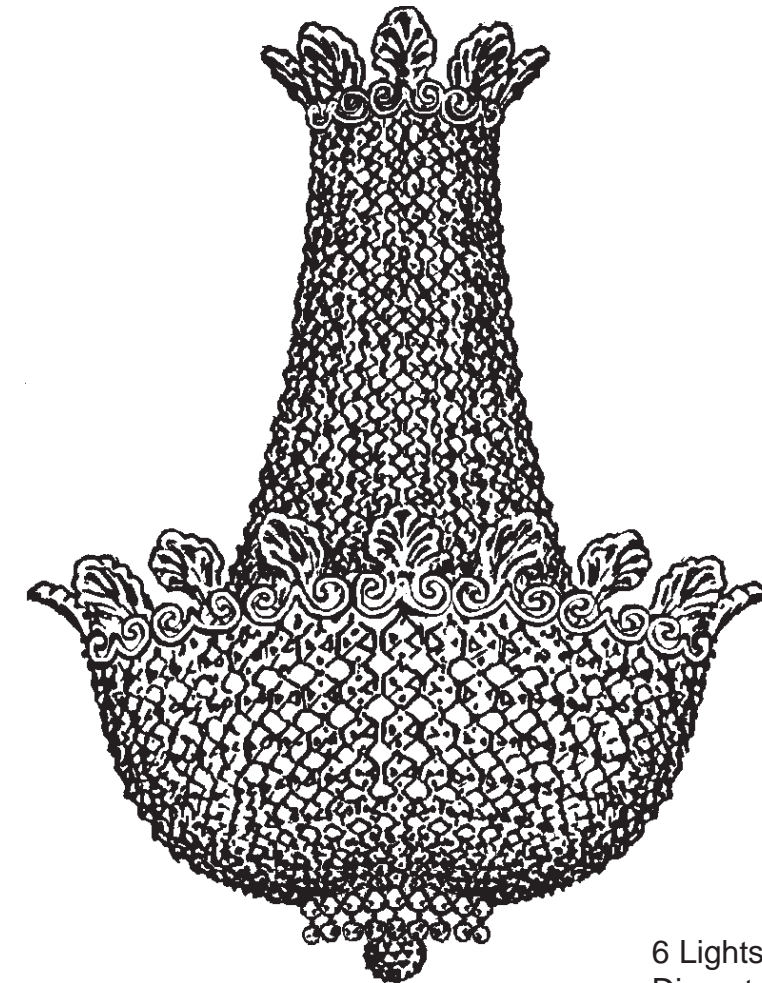
Instructions for electrician STEPS 2 - 10



All electrical components must be installed by a licensed electrician in accordance with the National Electric Code and the appropriate local electrical codes.



CHANDELIER 3710-____A TRIM DIAGRAM (Finish Option)



6 Lights
Diameter: 15"
Body Length: 20-1/2"
Extension: 7"
Hanging Weight: 6 lbs.

THIS DESIGN IS THE PROPRIETARY
TRADE DRESS/TRADEMARK OF
SCHONBEK WORLDWIDE LIGHTING INC.

SCHONBEK®

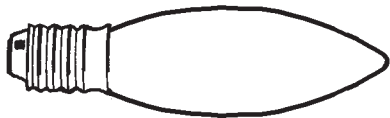
**See diagram on back page
Follow steps in exact order
Save this trim diagram for future reference**

1 **IMPORTANT**
Person who opens carton should record the following information for future service.

CODE #	_____	Four-digit number on outside of carton.
PACKER #	_____	See crystal package label.
ORDER #	_____	See crystal package label.

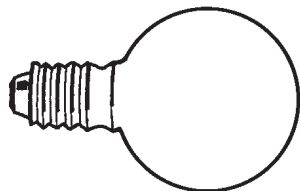
SCHONBEK IS A WORLD LEADER IN CHANDELIER DESIGN. PATENTS INCLUDE:
#D5,222,805, #D5,588,744 & #D373,441

Instructions for crystal trimming
STEPS 11 - 16



11

You will need 1 - C10
25 Watts Recommended
40 Watts Max



You will need 5 - G12
25 Watts Recommended
40 Watts Max

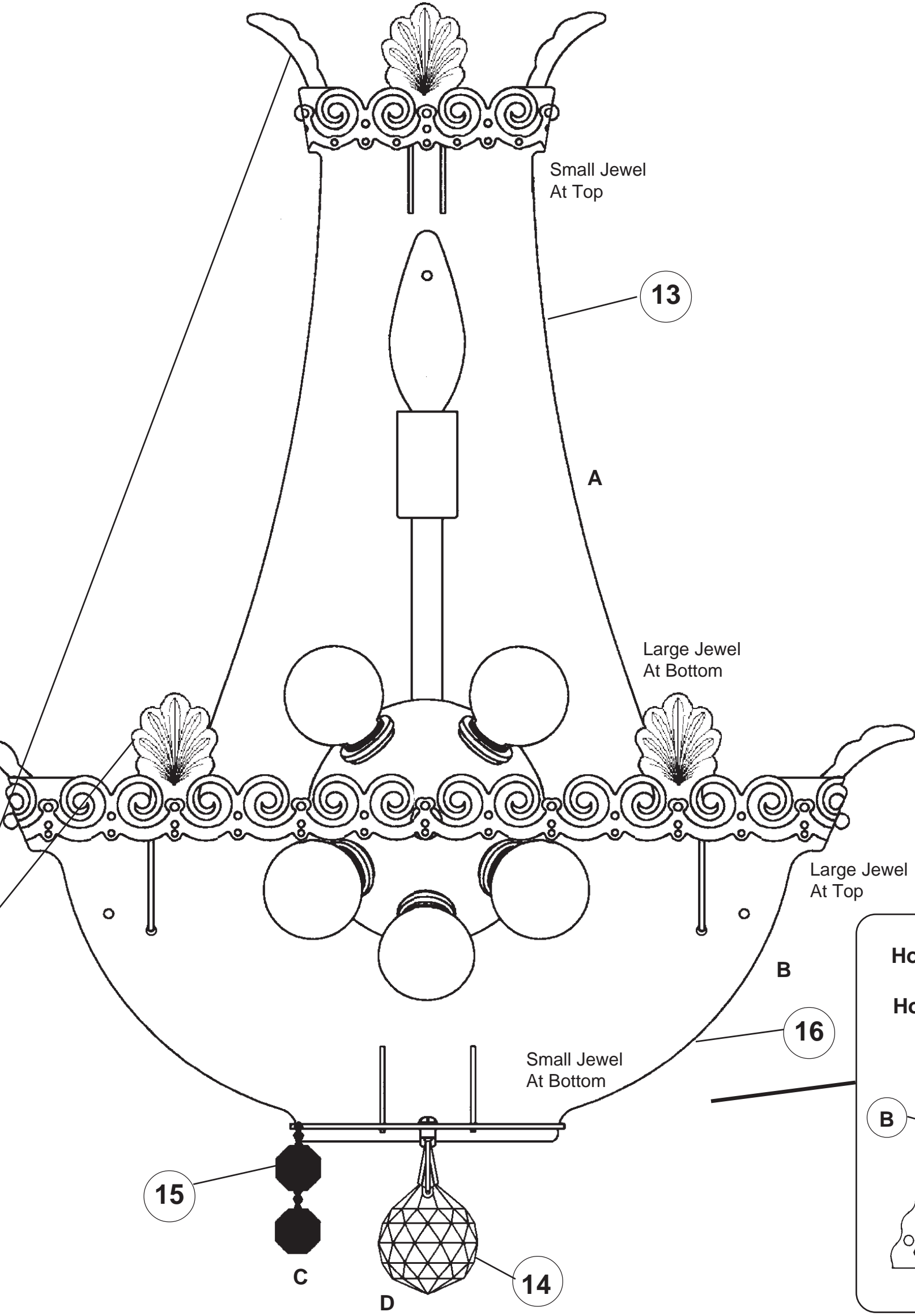
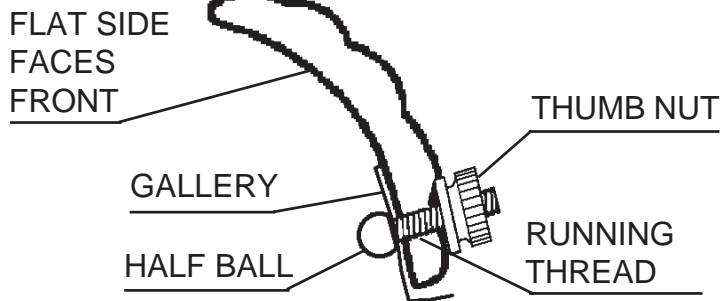
Install bulb and be sure to
test fixture **BEFORE** trim-
ming.

9580/56

Install leaves with half ball.

- 1. Screw half ball onto running thread.
- 2. Slide running thread thru gallery and leaf.
- 3. Adjust leaf to sit up and down (make sure leaf doesn't lean right or left).
- 4. Tighten leaf to gallery using thumb nut onto running thread.

12



Hook Chain "C" into the bottom inside ring.
Hook the bottom of Chain "B" into the bottom outside ring.

