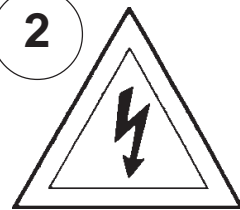


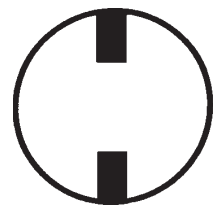
Instructions for electrician STEPS 2 - 21

WARNING:

2

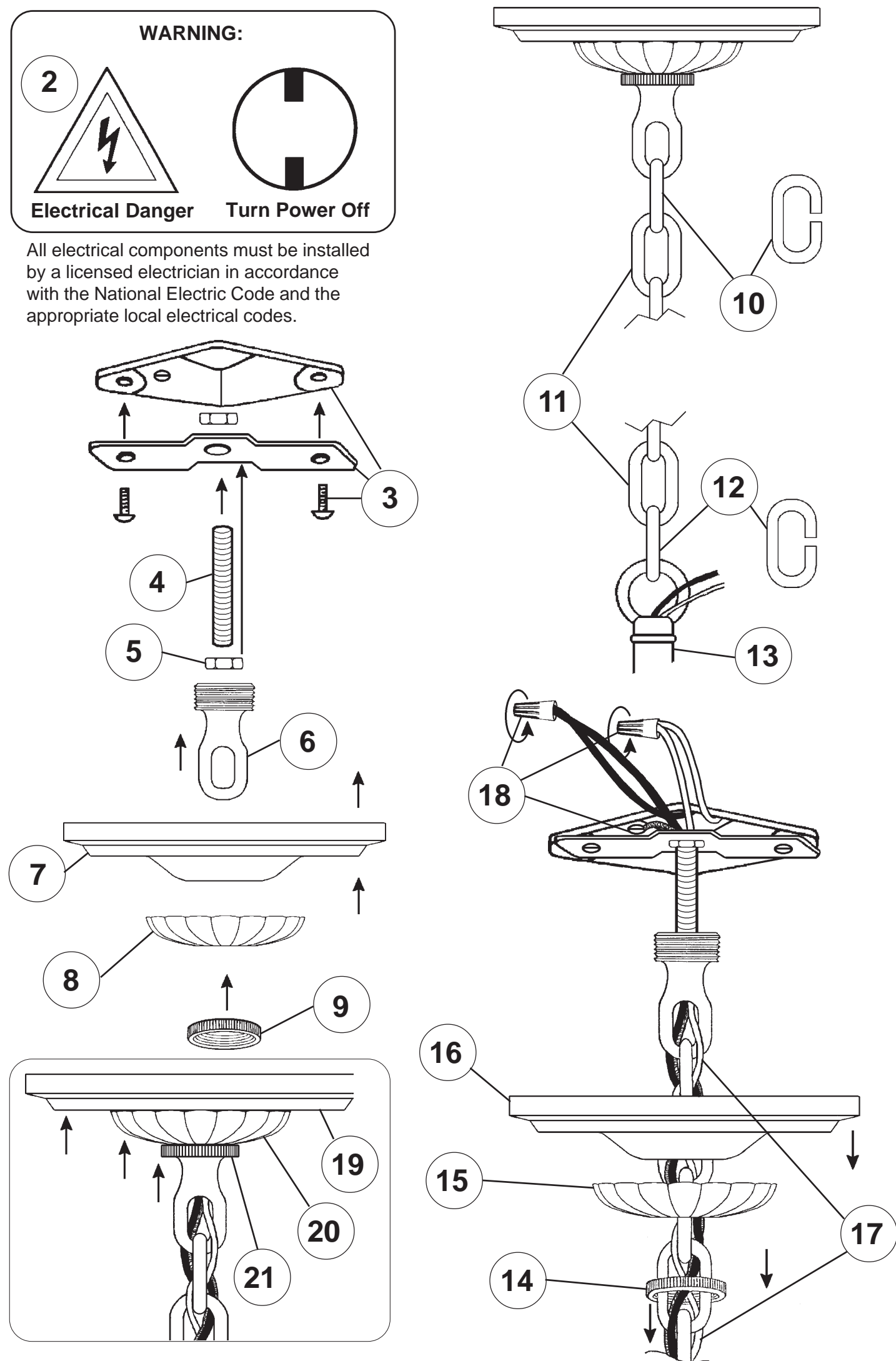


Electrical Danger

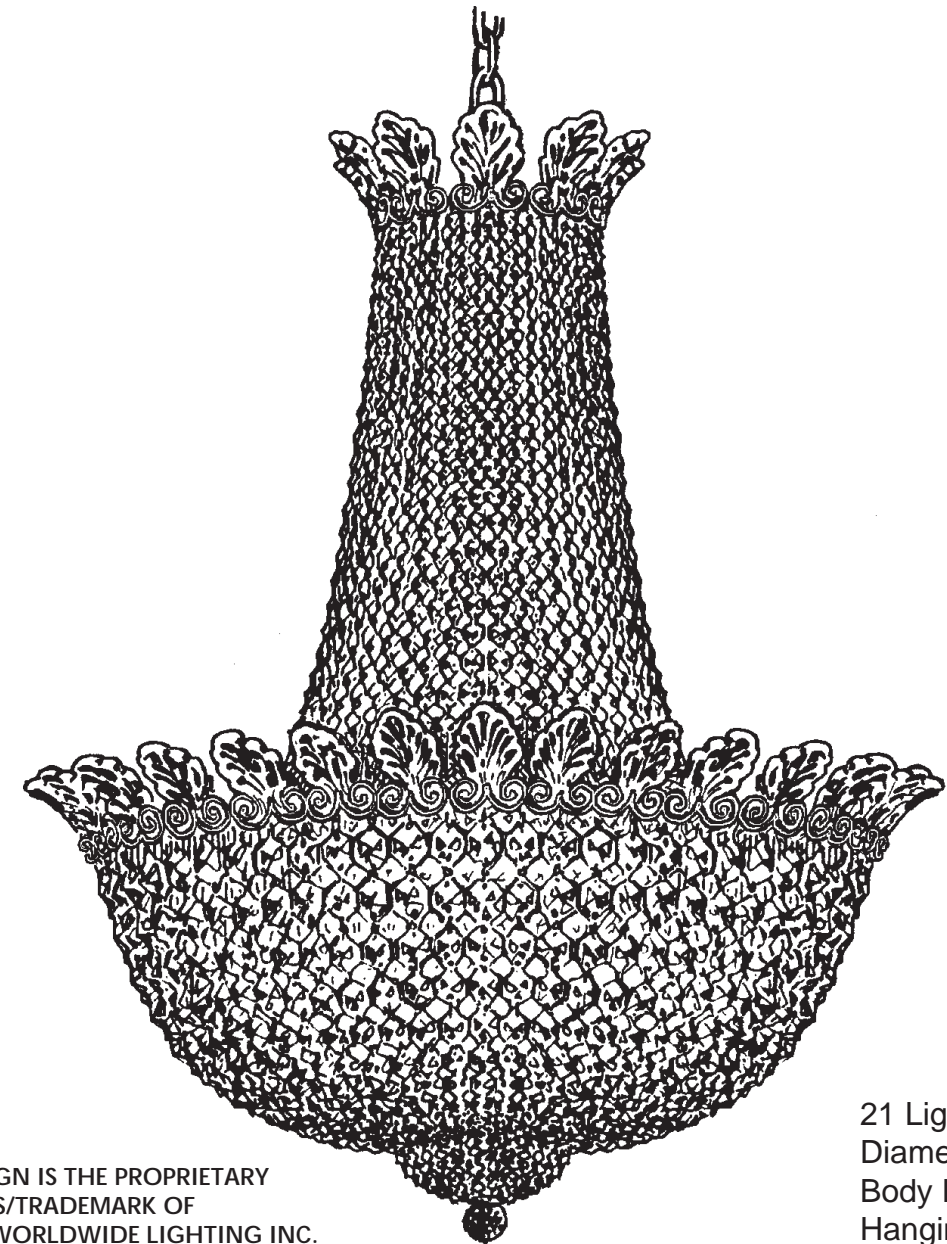


Turn Power Off

All electrical components must be installed by a licensed electrician in accordance with the National Electric Code and the appropriate local electrical codes.



CHANDELIER 3718- _____ A TRIM DIAGRAM (Finish Option)



THIS DESIGN IS THE PROPRIETARY
TRADE DRESS/TRADEMARK OF
SCHONBEK WORLDWIDE LIGHTING INC.

21 Lights
Diameter: 26"
Body Length: 31"
Hanging Weight: 32 lbs.

SCHONBEK®

See diagram on back page
Follow steps in exact order
Save this trim diagram for future reference

1

IMPORTANT

Person who opens carton should record the following information for future service.

CODE # _____ Four-digit number on outside of carton.
PACKER # _____ See crystal package label.
ORDER # _____ See crystal package label.

SCHONBEK IS A WORLD LEADER IN CHANDELIER DESIGN. PATENTS INCLUDE:
#D5,222,805, #D5,588,744 & #D373,441

Instructions for crystal trimming STEPS 22 - 27



22

You will need 20 - C10
25 Watts Recommended
60 Watts Max

Install bulb and be sure to test
fixture **BEFORE** trimming.

You will need 1 - G16-1-2
25 Watts Recommended
60 Watts Max

Install leaves with half ball.

1. Screw half ball onto running thread.
2. Slide running thread thru gallery and leaf.
3. Adjust leaf to sit up and down (make sure leaf doesn't lean right or left).
4. Tighten leaf to gallery using thumb nut onto running thread.

23

FLAT SIDE
FACES
FRONT

GALLERY

HALF BALL

THUMB NUT

RUNNING
THREAD

#9580/75

Gently remove tissue
paper from the inside of
the Crystal Finial.

26

PAPER

Small Jewel
At Top

24

A

Large Jewel
At Bottom

Large Jewel
At Top

25

Hook the bottom of Chain
"B" into the gallery of the
Crystal Finial as
indicated

27

B

Small Jewel
At Bottom

CRYSTAL
FINIAL