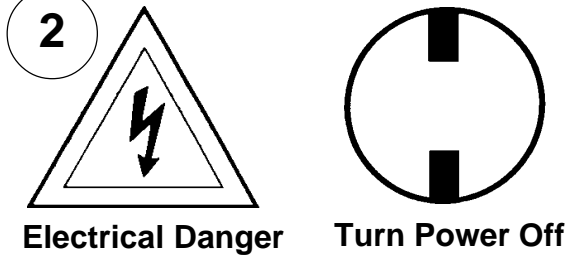
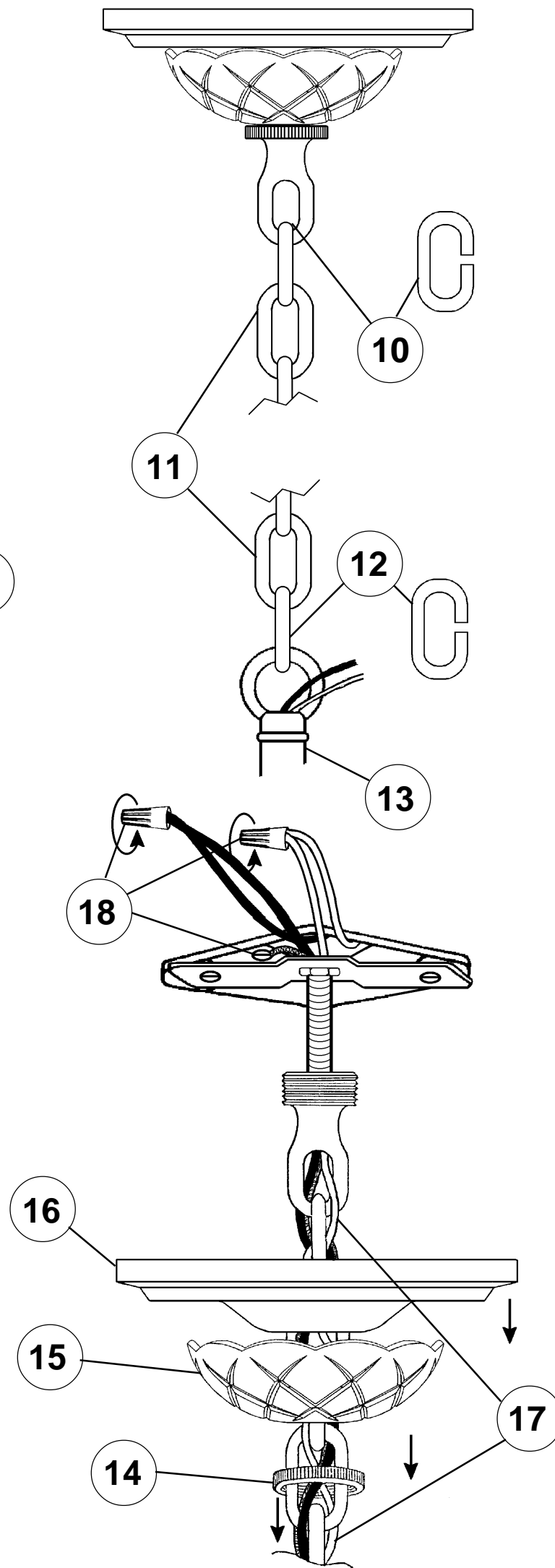
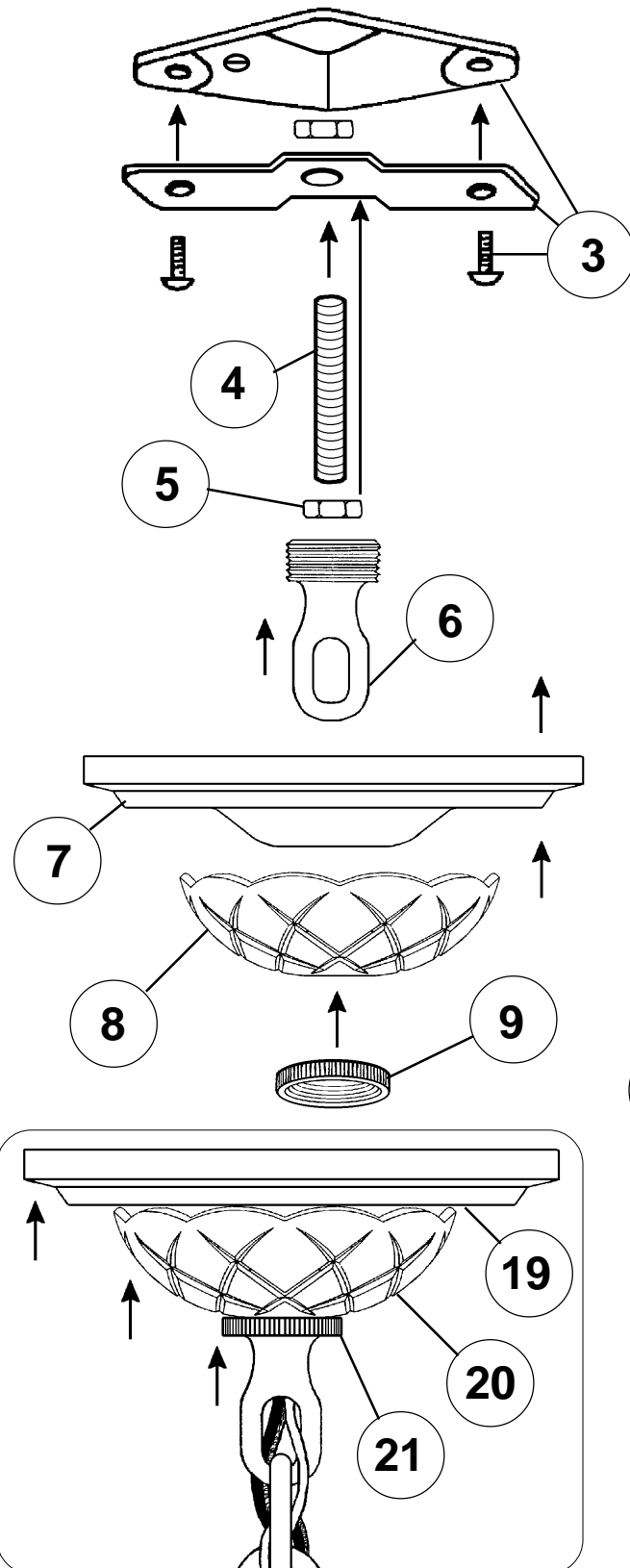


## Instructions for electrician STEPS 2 - 21

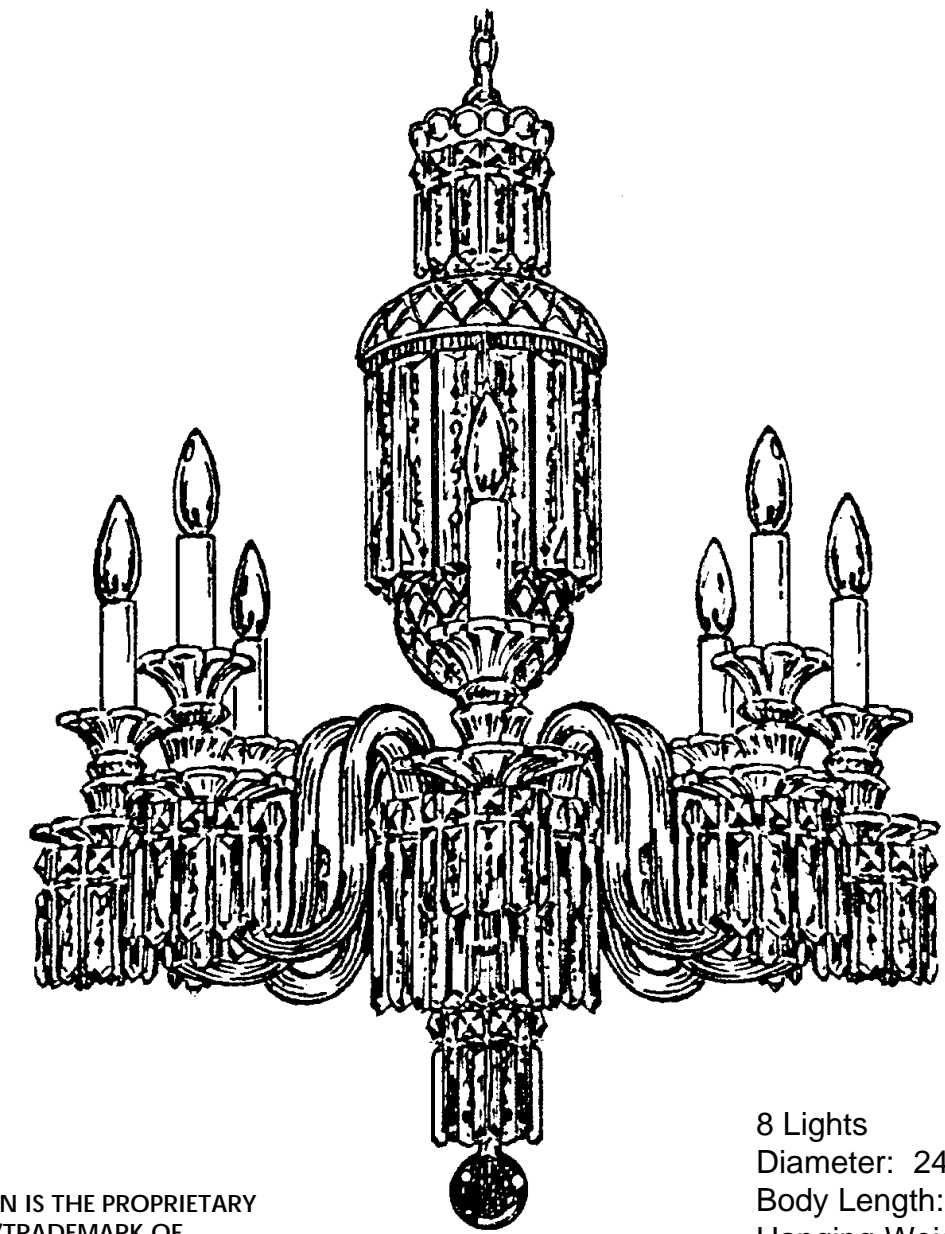
### WARNING:



All electrical components must be installed by a licensed electrician in accordance with the National Electric Code and the appropriate local electrical codes.



## CHANDELIER 5032 TRIM DIAGRAM



8 Lights  
Diameter: 24"  
Body Length: 30"  
Hanging Weight: 30 pounds

**T** HIS DESIGN IS THE PROPRIETARY  
TRADE DRESS/TRADEMARK OF  
SCHONBEK WORLDWIDE LIGHTING INC.

# SCHONBEK®

See diagram on back page  
Follow steps in exact order  
Save this trim diagram for future reference

### IMPORTANT

**1** Person who opens carton should record the following information for future service.

CODE # \_\_\_\_\_ Four-digit number on outside of carton.  
PACKER # \_\_\_\_\_ See crystal package label.  
ORDER # \_\_\_\_\_ See crystal package label.

SCHONBEK IS A WORLD LEADER IN CHANDELIER DESIGN. PATENTS INCLUDE:  
#D292,620, #D335,546, #D335,716, #D335,720, #D338,082, #D389,264, #D338,278, #D339,879,  
#D345,815, #D373,441, #D374,102, #D374,103, #D374,498, #D382,077, #D393,325, #D397,495,  
#D397,494, #D403,101, #D435,686, #D454,973, #D454,974, #D455,224, #D456,940, #D463,602S,  
#D463,603S, #D464,769S, #D468,480, #2,651,806, #5,104,082, #5,109,325, #5,116,009, #5,144,541,  
#5,205,644, #5,222,805, #5,241,460, #5,255,173, #5,258,900, #5,285,364, #5,404,285, #5,460,269,  
#5,567,046, #5,567,468, #5,573,330, #5,577,838, #5,588,744, #5,873,652, #5,906,430, #5,921,668 &  
#6,241,370B1

Instructions for crystal trimming  
STEPS 22 - 33

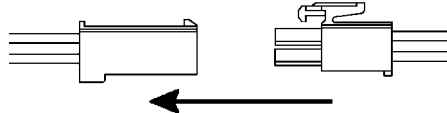


26

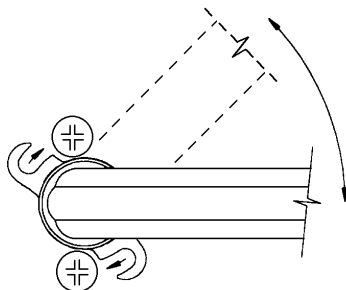
You will need 8 - C10  
25 Watts Recommended  
60 Watts Max

Install bulbs and be  
sure to test fixture  
BEFORE trimming.

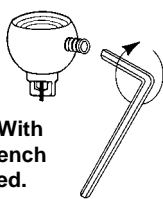
22 Connect arm wires to the center column  
using plug-in connectors. See detailed illustration.



Push wires into hole and attach arm to washer  
by rotating arm into place. Lock down by tightening  
screws into flange. See detailed illustration.



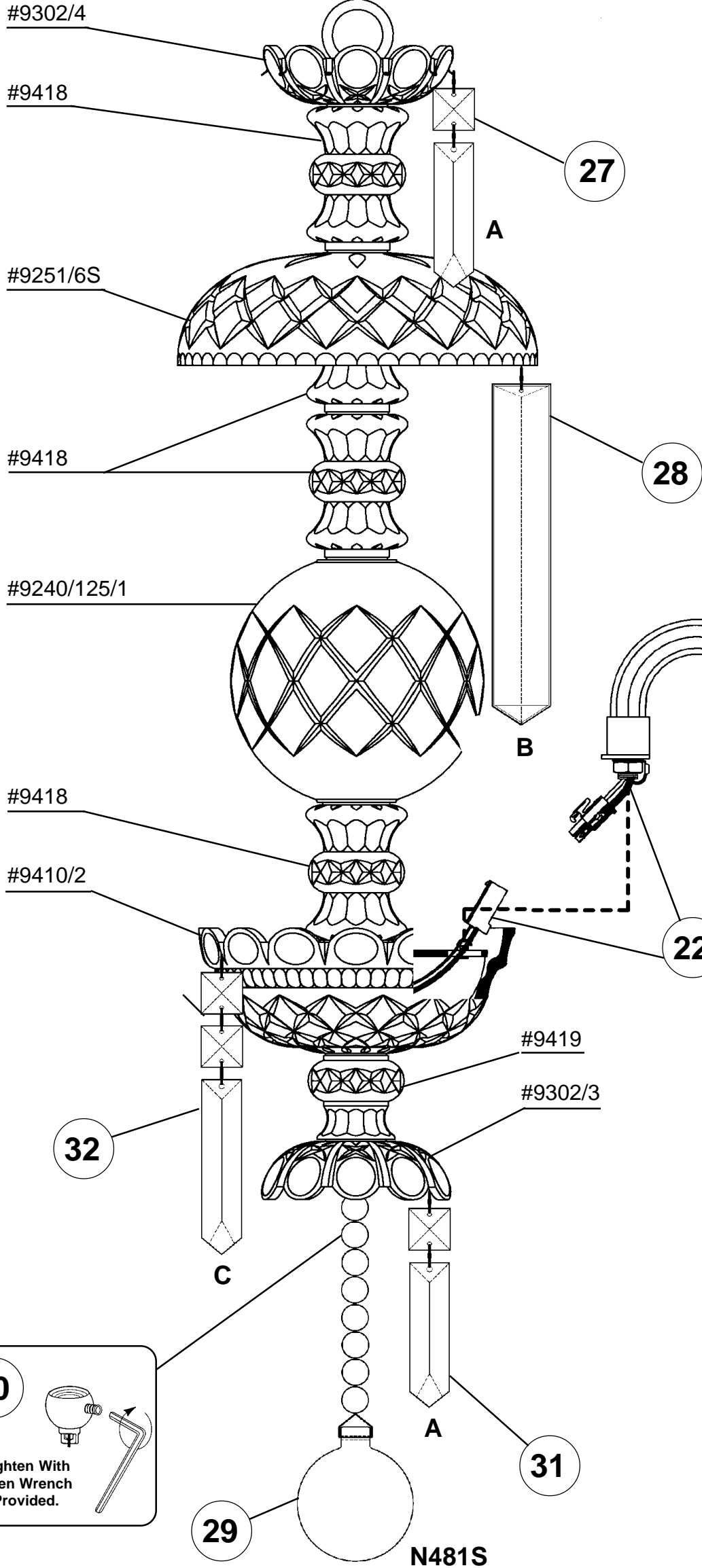
30



Tighten With  
Allen Wrench  
Provided.

29

N481S



25

#9771

24

#9930

23

BOBECHE  
#9772/1

33

GLASS ARM  
#9788/1



**CAUTION:** Glass parts are fragile.  
To avoid breakage use care when  
assembling or cleaning.

**WHEN ORDERING REPLACEMENT  
ARM(S):**

- Give arm number from trim diagram
- Give color code from the arm itself

