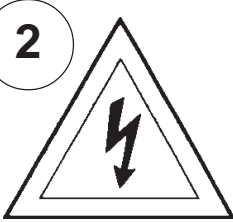
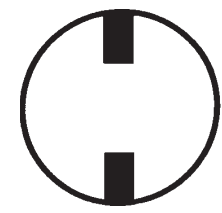


## Instructions for electrician STEPS 2 - 18

### WARNING:

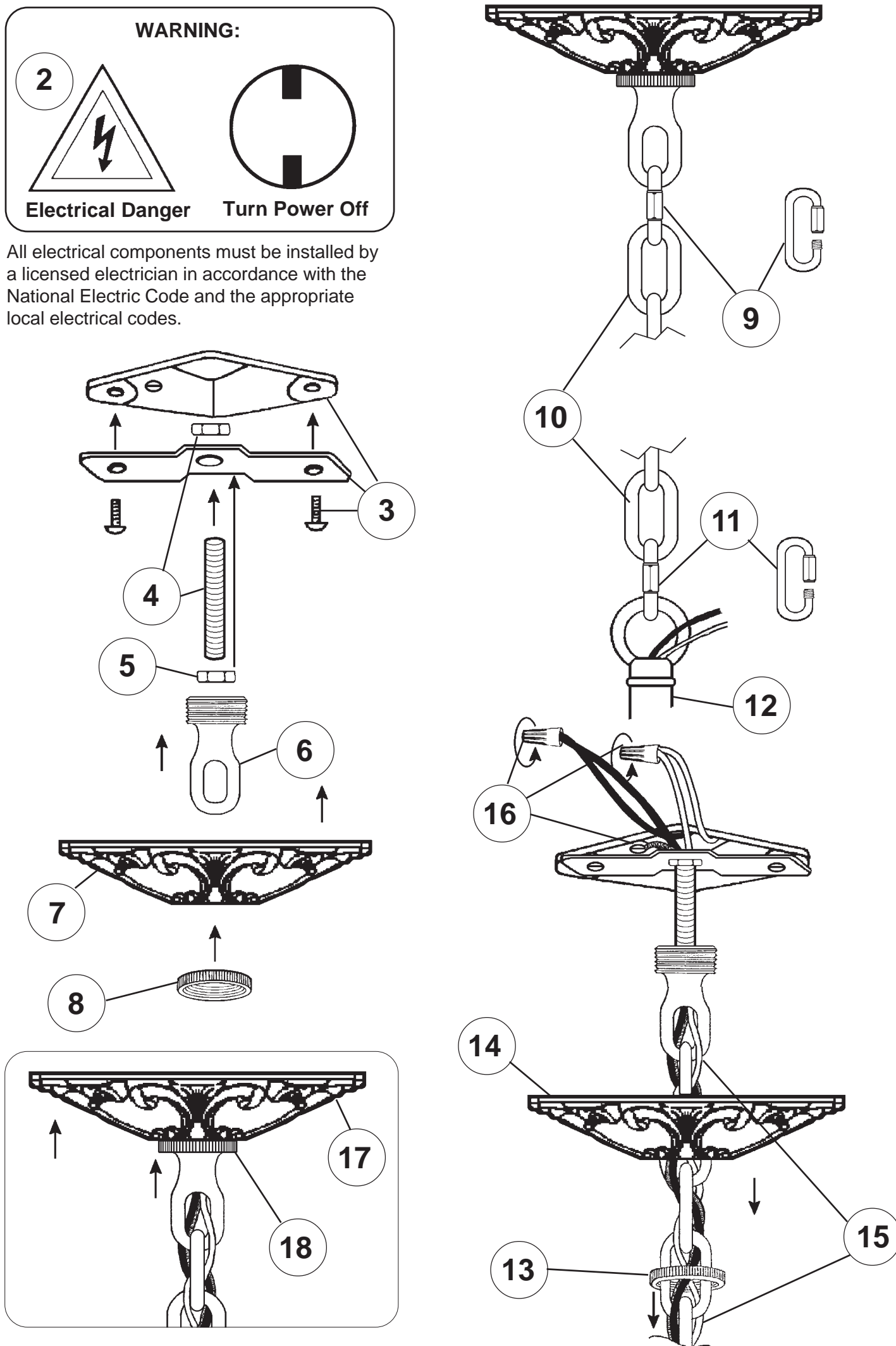


Electrical Danger



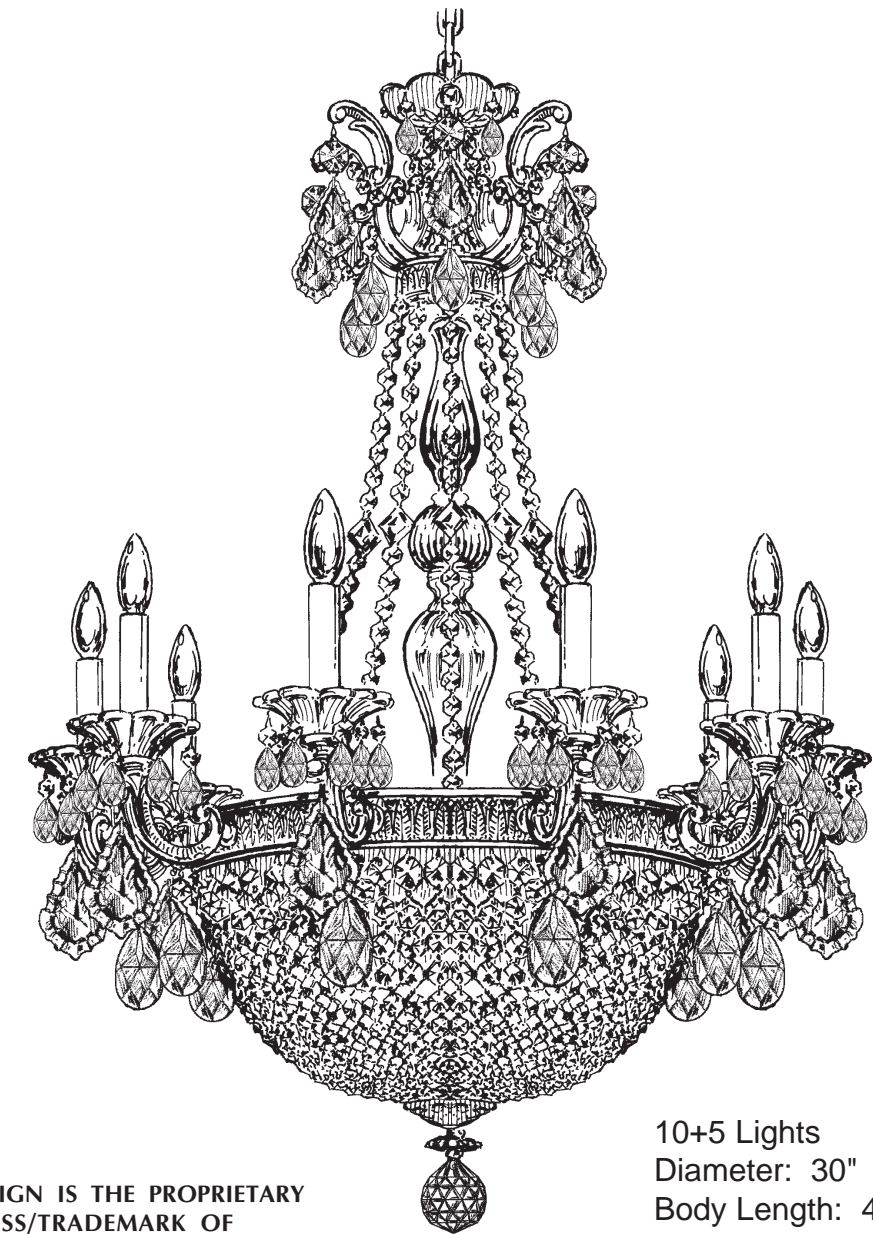
Turn Power Off

All electrical components must be installed by a licensed electrician in accordance with the National Electric Code and the appropriate local electrical codes.



## CHANDELIER 5080- \_\_\_\_ \_A TRIM DIAGRAM

(Finish Option)



THIS DESIGN IS THE PROPRIETARY  
TRADE DRESS/TRADEMARK OF  
SCHONBEK WORLDWIDE LIGHTING INC.

10+5 Lights  
Diameter: 30"  
Body Length: 40-1/2"  
Hanging Weight: 38 lbs.

# SCHONBEK®

See diagram on back page  
Follow steps in exact order  
Save this trim diagram for future reference

1

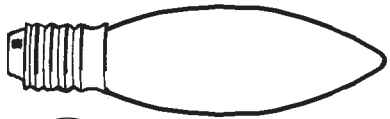
### IMPORTANT

Person who opens carton should record the following information for future service.

CODE # \_\_\_\_\_ Four-digit number on outside of carton.  
PACKER # \_\_\_\_\_ See crystal package label.  
ORDER # \_\_\_\_\_ See crystal package label.

SCHONBEK IS A WORLD LEADER IN CHANDELIER DESIGN. PATENTS INCLUDE:  
#D5,222,805

Instructions for crystal trimming  
STEPS 19 - 30



19

You will need 15 - C10  
25 Watts Recommended  
60 Watts Max

Install bulbs and be  
sure to test fixture  
BEFORE trimming.

HANG  
CRYSTAL  
WITH FLAT  
SIDE FACING  
FRONT

