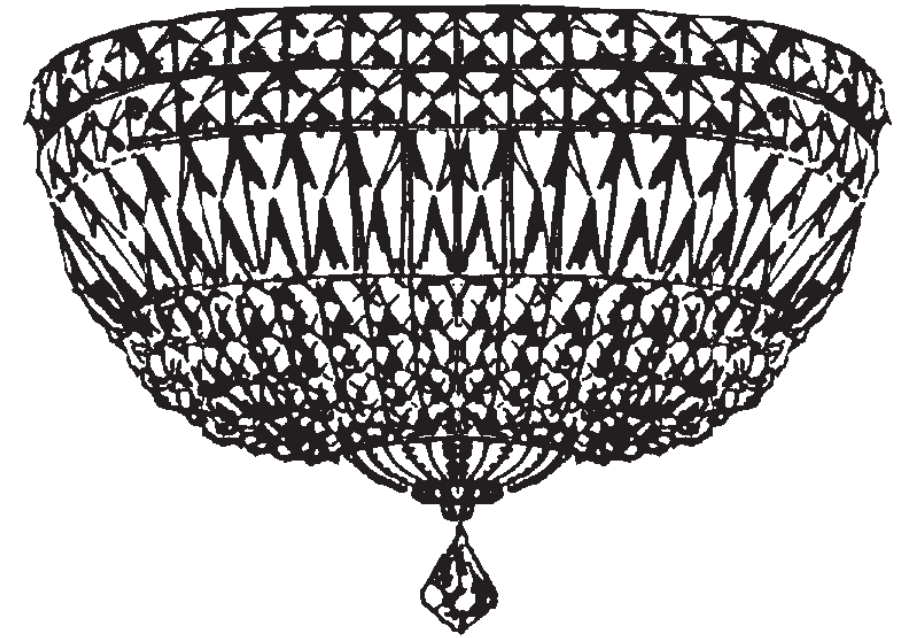


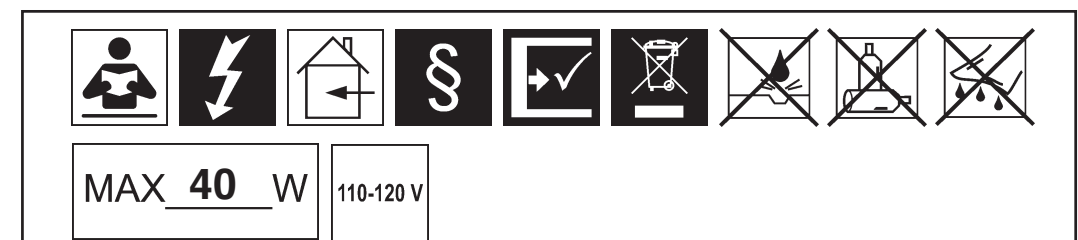


## PETIT CRYSTAL DELUXE 6600- \_\_ \_\_A



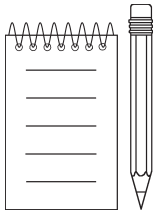
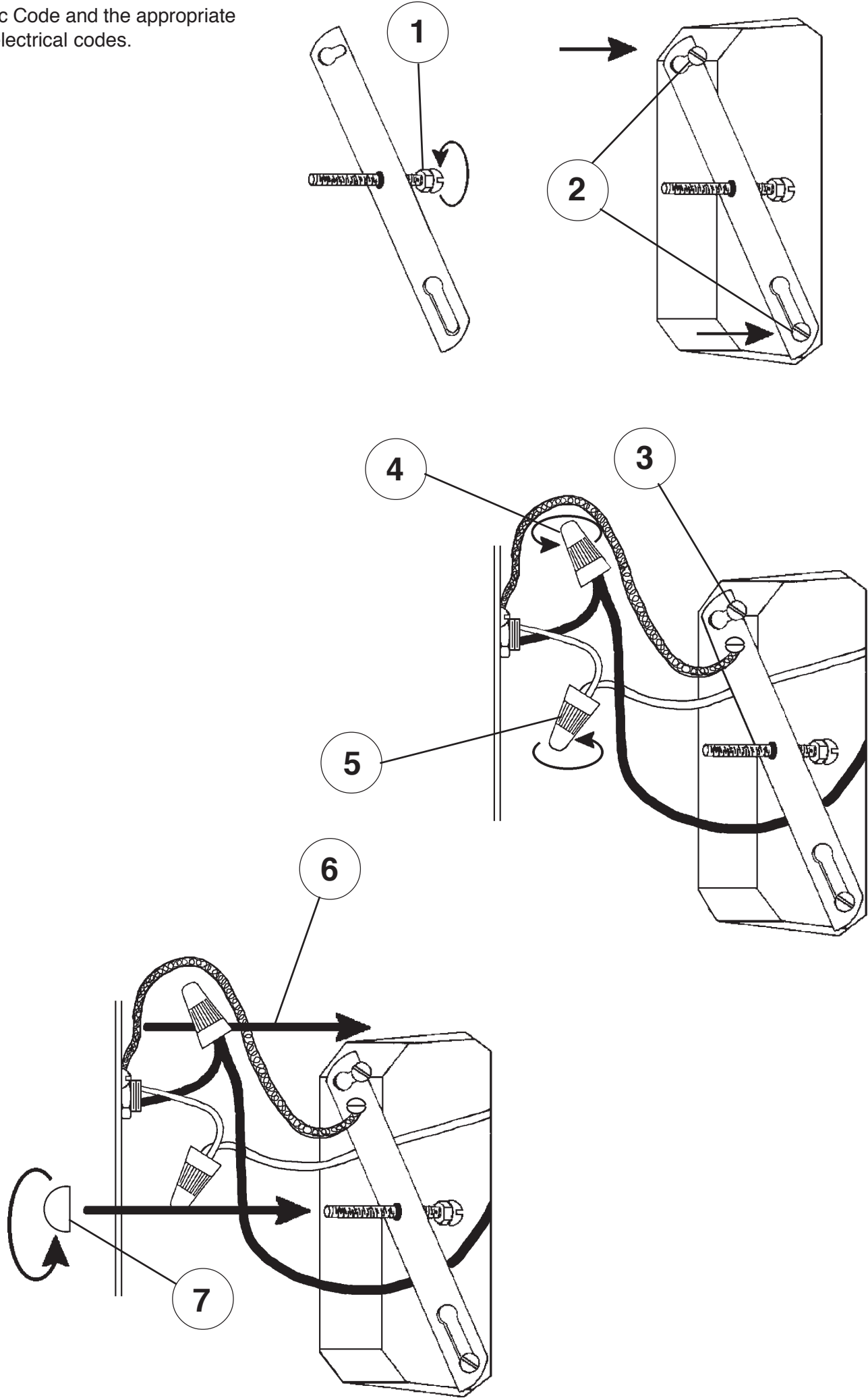
**T**HIS DESIGN IS THE PROPRIETARY  
TRADE DRESS/TRADEMARK OF  
SWAROVSKI LIGHTING, LTD.

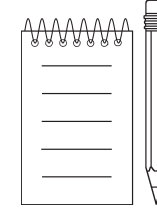
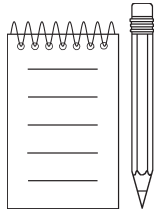
3 Lights  
Diameter: 10"  
Body Length: 7-1/2"  
Extension: 5"  
Hanging Weight: 4 lbs.

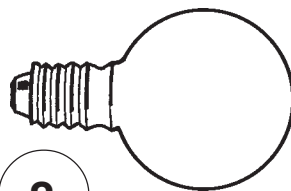


SCHONBEK® is a member of the Swarovski group.

All electrical components must be installed by a licensed electrician in accordance with the National Electric Code and the appropriate local electrical codes.



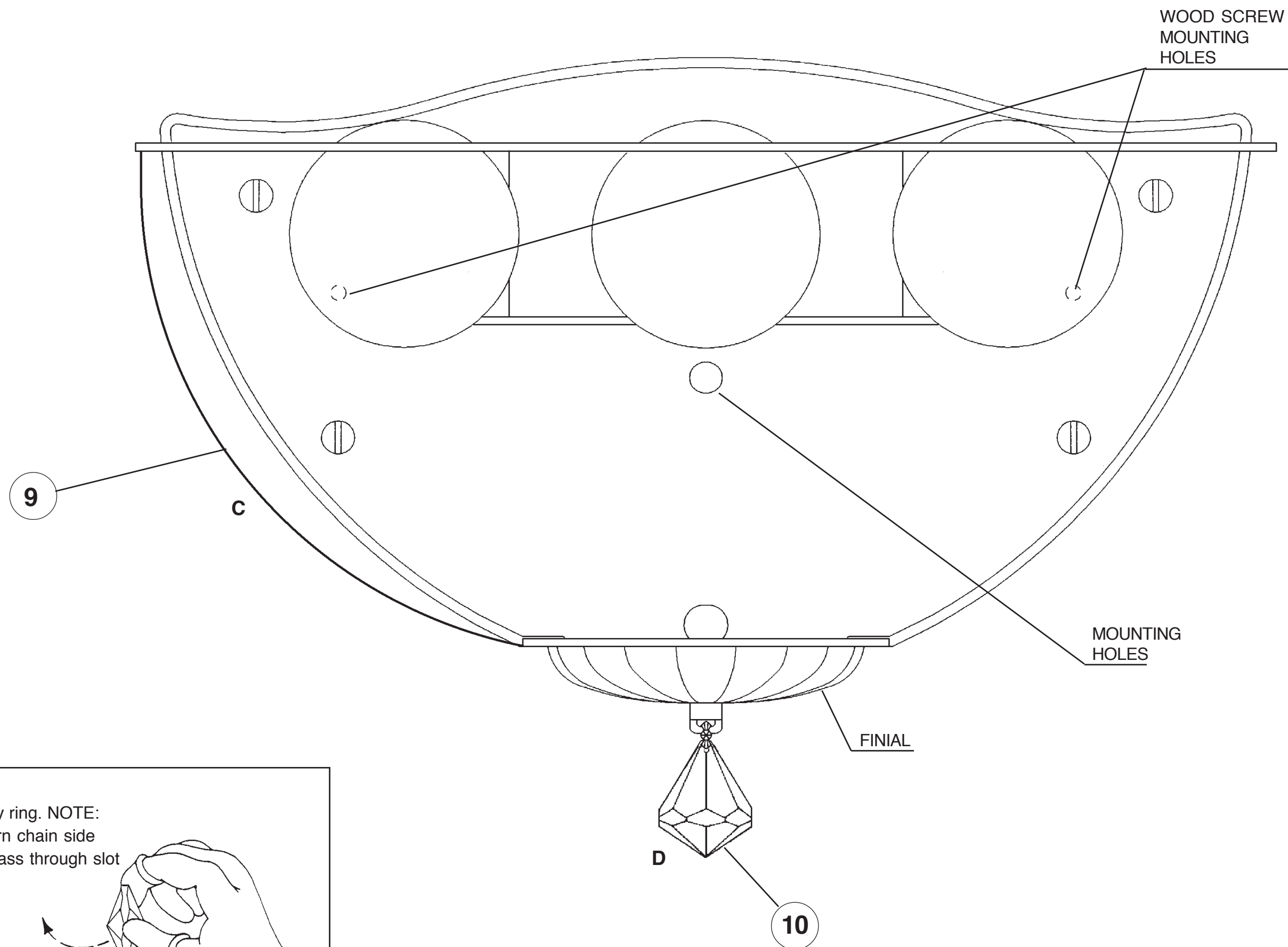




8

You will need 3 - G16-1/2  
25 Watts Recommended  
40 Watts Max

**Install bulbs and be sure  
to test fixture BEFORE  
trimming.**



**9** Hook Chains "C" into the gallery ring. NOTE:  
Hold onto the square stone and turn chain side  
ways, this will allow connector to pass through slot  
in metal ring. Turn  
square stone to face the  
outside of the fixture  
and lower it until it  
seats itself in the  
ring. Hook the other end  
into the pin holes of the finial.

