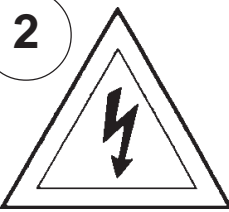
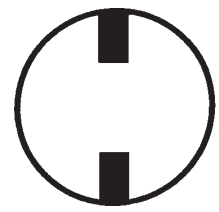


Instructions for electrician STEPS 2 - 21

WARNING:

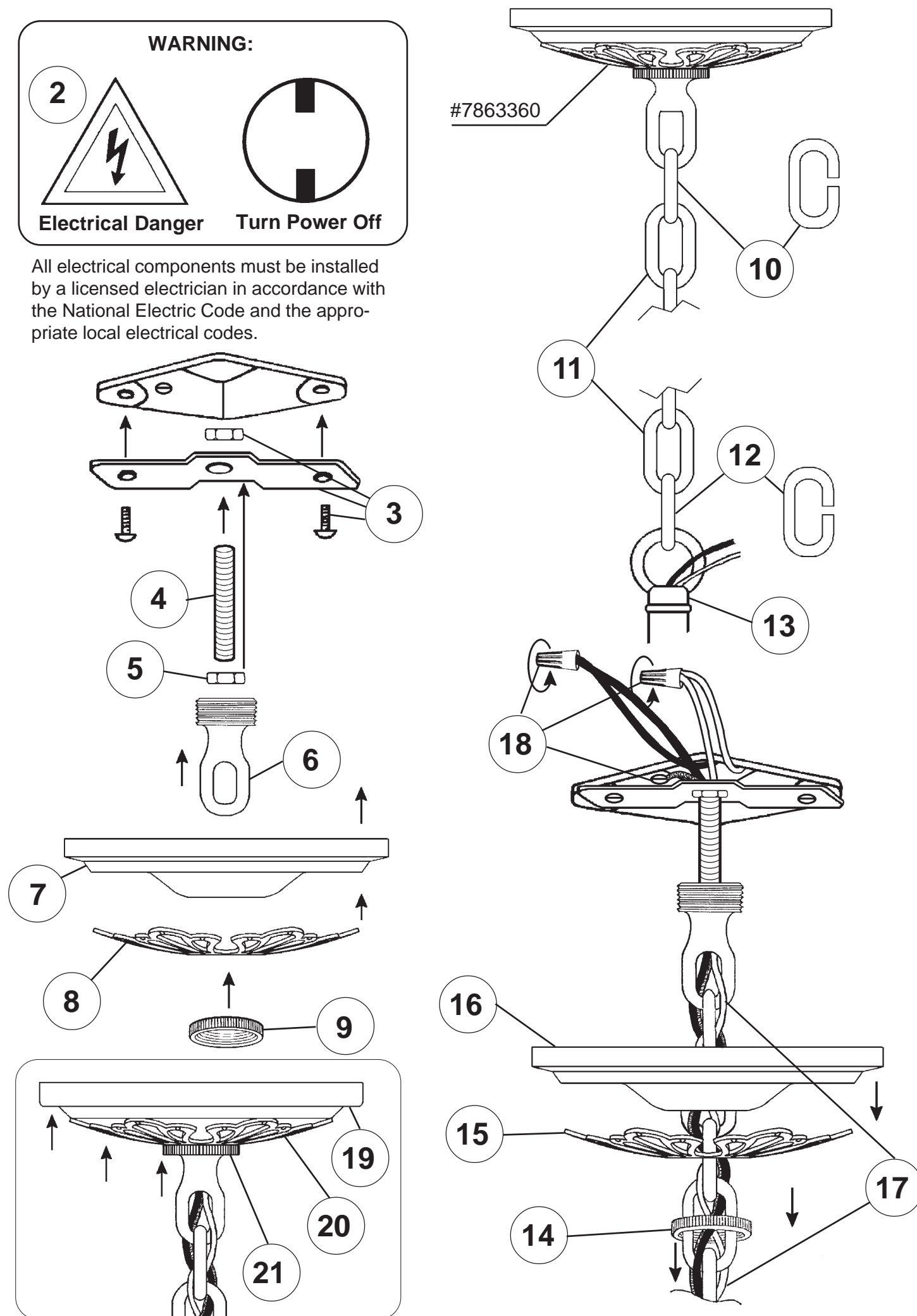


Electrical Danger

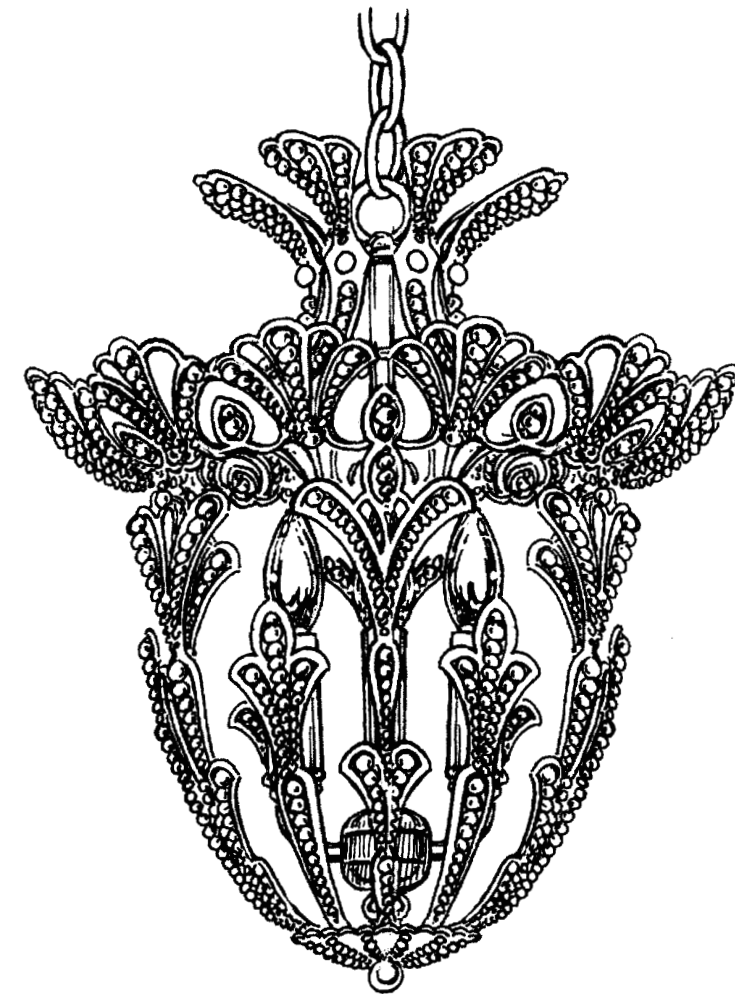


Turn Power Off

All electrical components must be installed by a licensed electrician in accordance with the National Electric Code and the appropriate local electrical codes.



CHANDELIER 6710-____ S TRIM DIAGRAM (Finish Option)



THIS DESIGN IS THE PROPRIETARY
TRADE DRESS/TRADEMARK OF
SCHONBEK WORLDWIDE LIGHTING INC.

3 Lights
Diameter: 12"
Body Length: 14-1/2"
Hanging Weight: 3 lbs.

SCHONBEK®

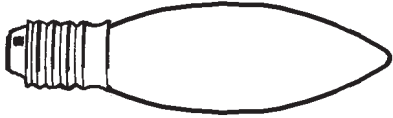
See diagram on back page
Follow steps in exact order
Save this trim diagram for future reference

IMPORTANT

1 Person who opens carton should record the following information for future service.
CODE # _____ Four-digit number on outside of carton.
PACKER # _____ See crystal package label.
ORDER # _____ See crystal package label.

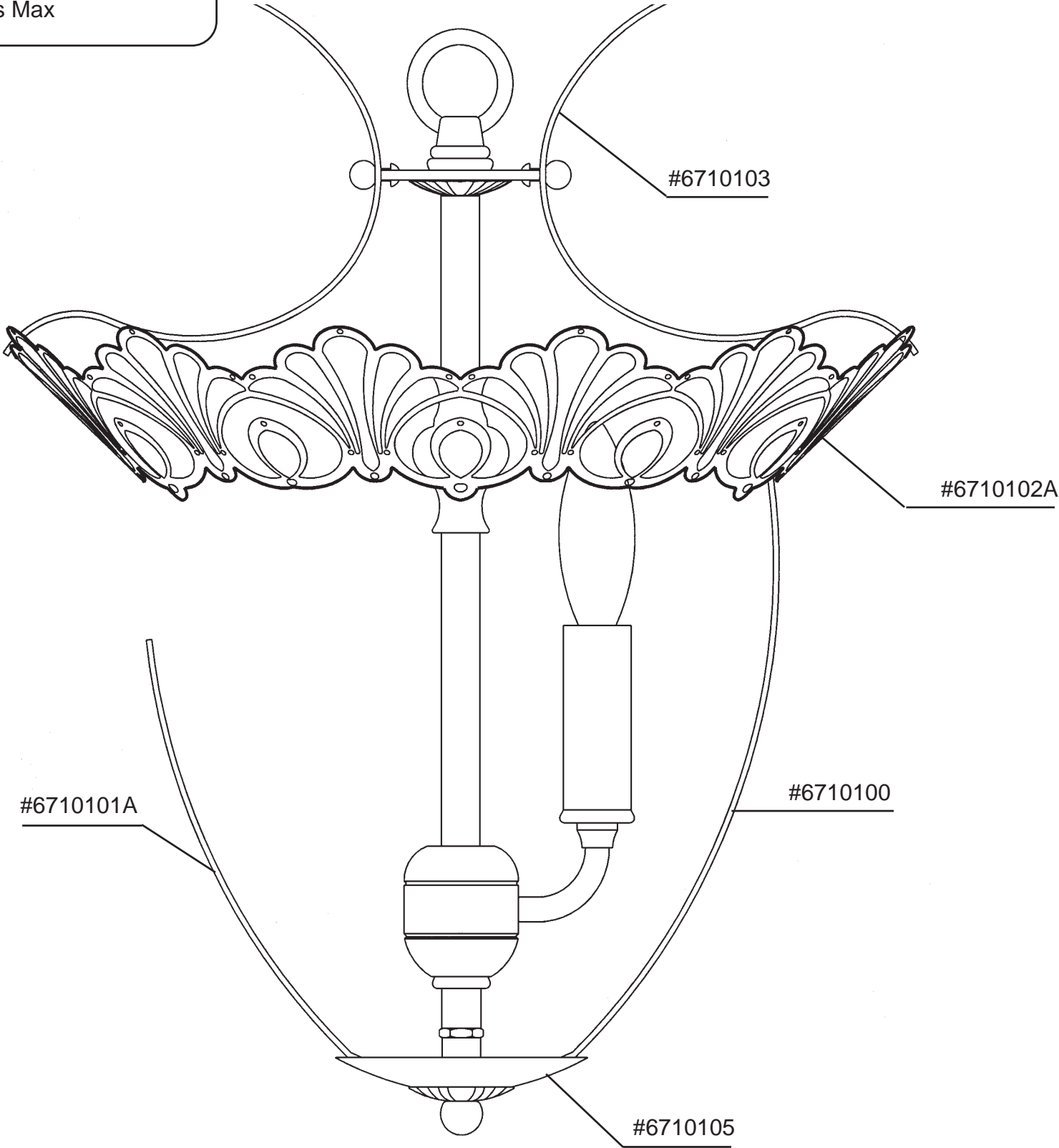
SCHONBEK IS A WORLD LEADER IN CHANDELIER DESIGN. PATENTS INCLUDE:
#D397,495

Instructions for crystal trimming
STEP 22



22

You will need 3 - C10
25 Watts Recommended
60 Watts Max



PART NUMBERS
FOR SPARE PARTS

