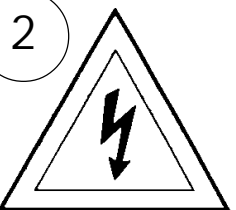
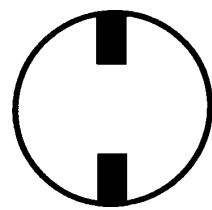


# Instructions for electrician STEPS 2 - 18

## WARNING:

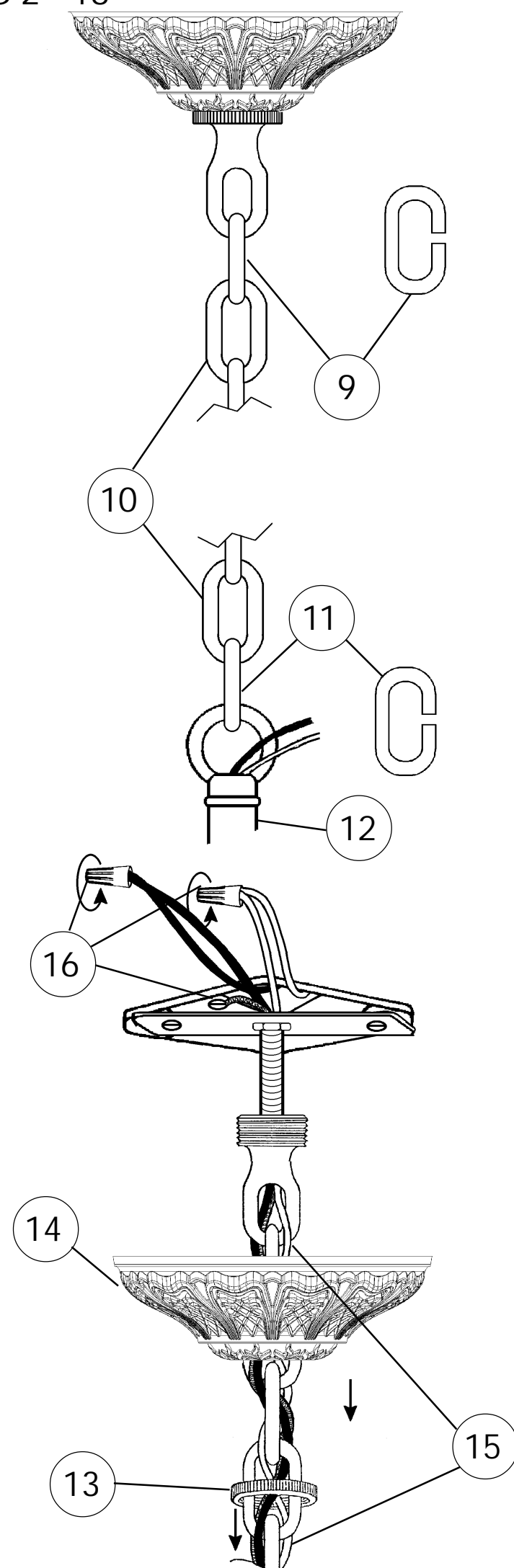
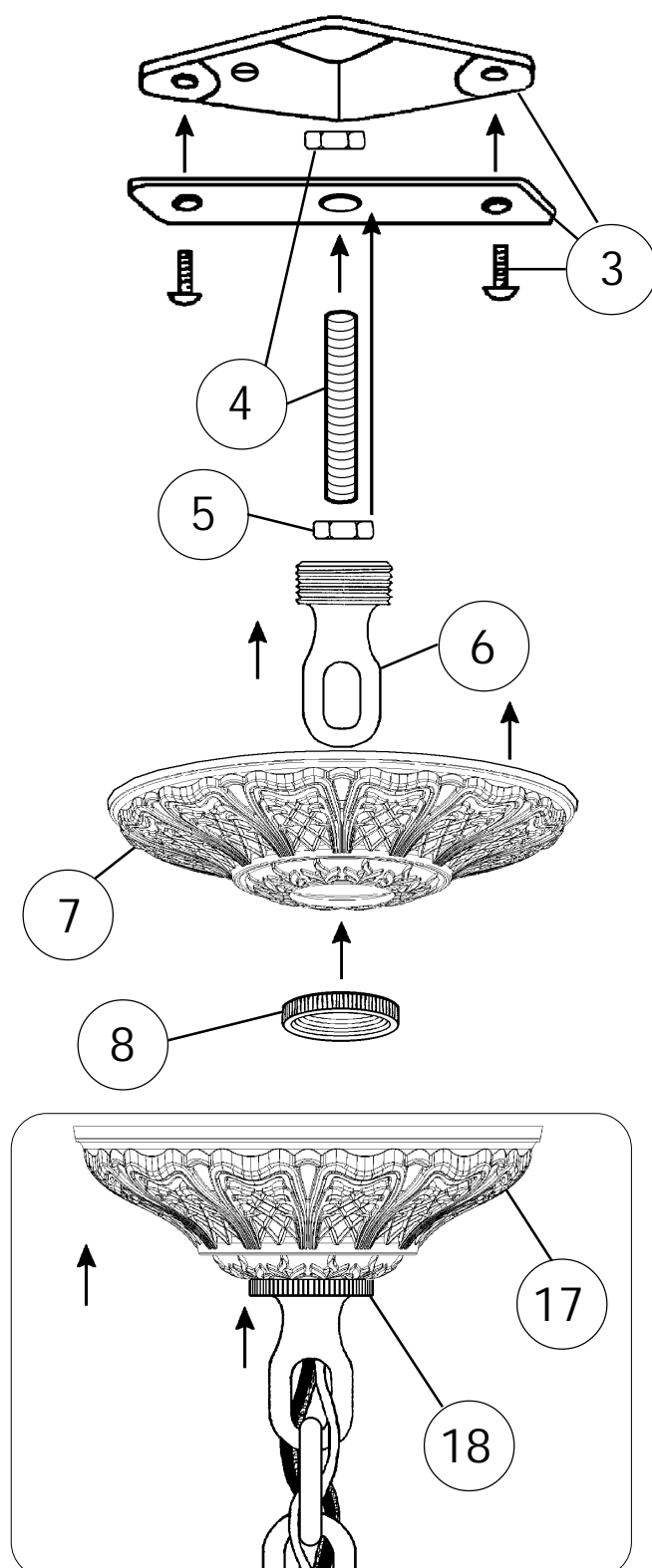


Electrical Danger



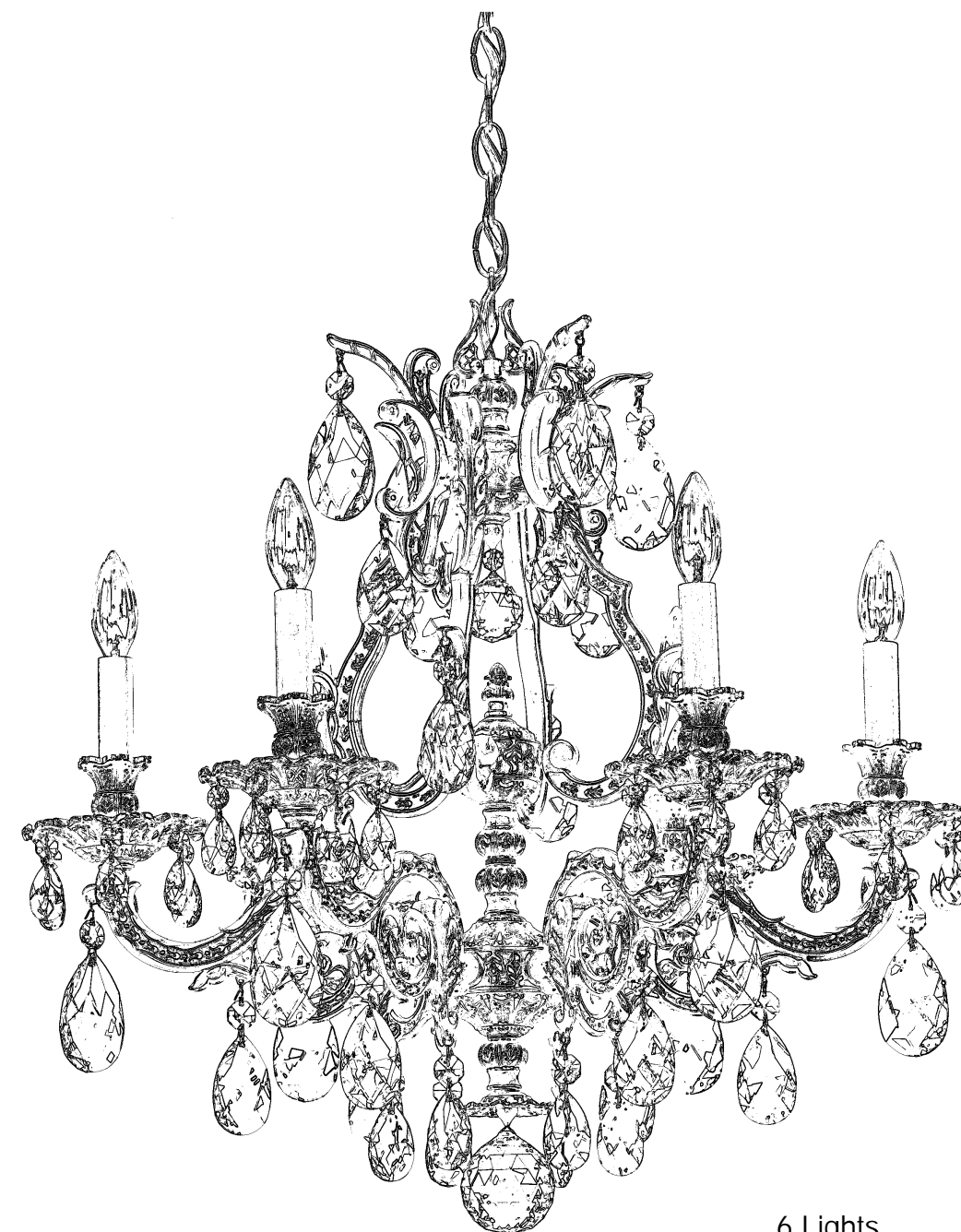
Turn Power Off

All electrical components must be installed by a licensed electrician in accordance with the National Electric Code and the appropriate local electrical codes.



# CHANDELIER 6946- \_\_\_\_A TRIM DIAGRAM

(Finish Option)



THIS DESIGN IS THE PROPRIETARY TRADE DRESS/TRADE MARK OF SCHONBEK WORLDWIDE LIGHTING INC.

6 Lights  
Diameter: 24"  
Body Length: 24-1/2"  
Hanging Weight: 16-1/2 lbs.

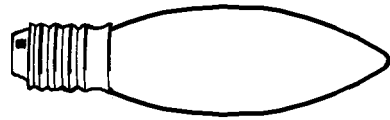
# SCHONBEK®

See diagram on back page  
Follow steps in exact order  
Save this trim diagram for future reference

## IMPORTANT

1 Person who opens carton should record the following information for future service.  
CODE # \_\_\_\_\_ Four-digit number on outside of carton.  
PACKER # \_\_\_\_\_ See crystal package label.  
ORDER # \_\_\_\_\_ See crystal package label.

Instructions for crystal trimming  
STEPS 19 - 30

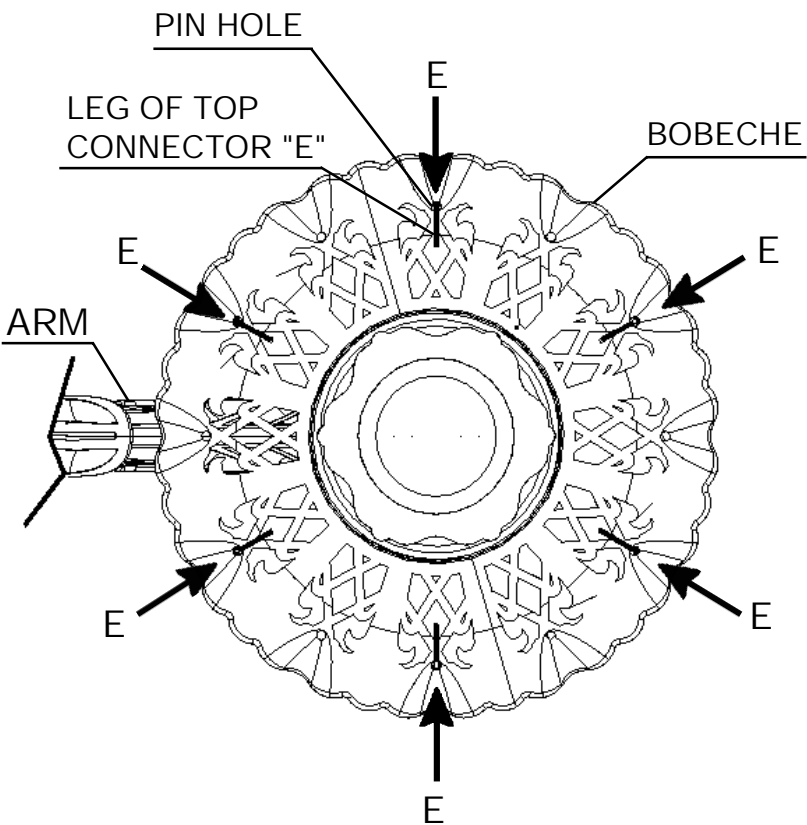


You will need 6 - C10  
25 Watts Recommended  
60 Watts Max

19

Install bulbs and be  
sure to test fixture  
BEFORE trimming.

DIAGRAM #1



When trimming bobeche with letter "E", insert leg of  
top connector into pin hole from under bobeche.  
Hang in every other pin hole starting on either side of  
the arm (refer to Diagram #1)

