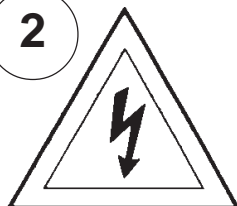


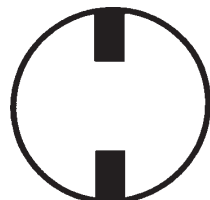
Instructions for electrician  
STEPS 2 - 9

WARNING:

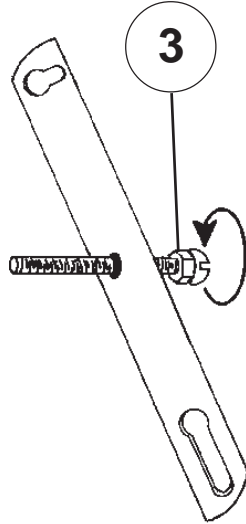
2



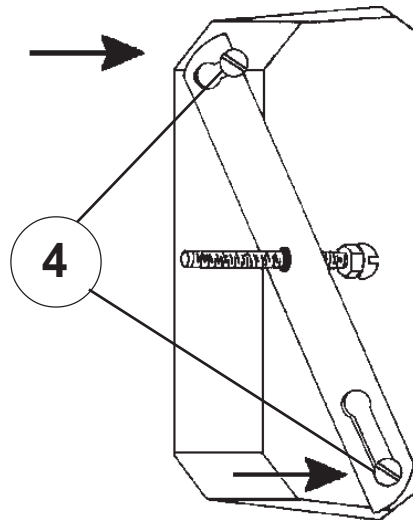
Electrical Danger



Turn Power Off

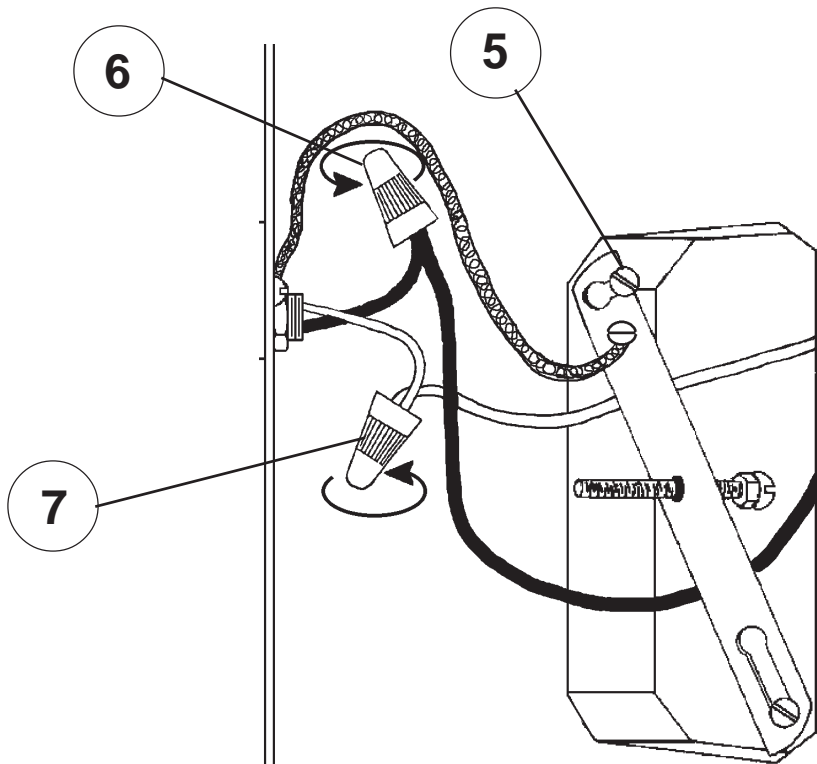


3



4

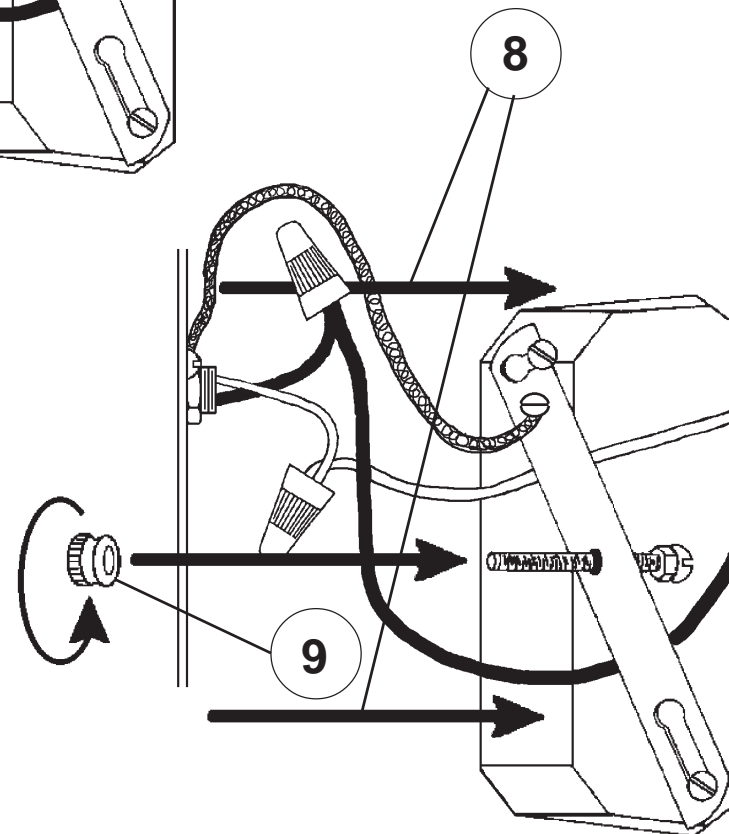
All electrical components must be installed by a licensed electrician in accordance with the National Electric Code and the appropriate local electrical codes.



5

6

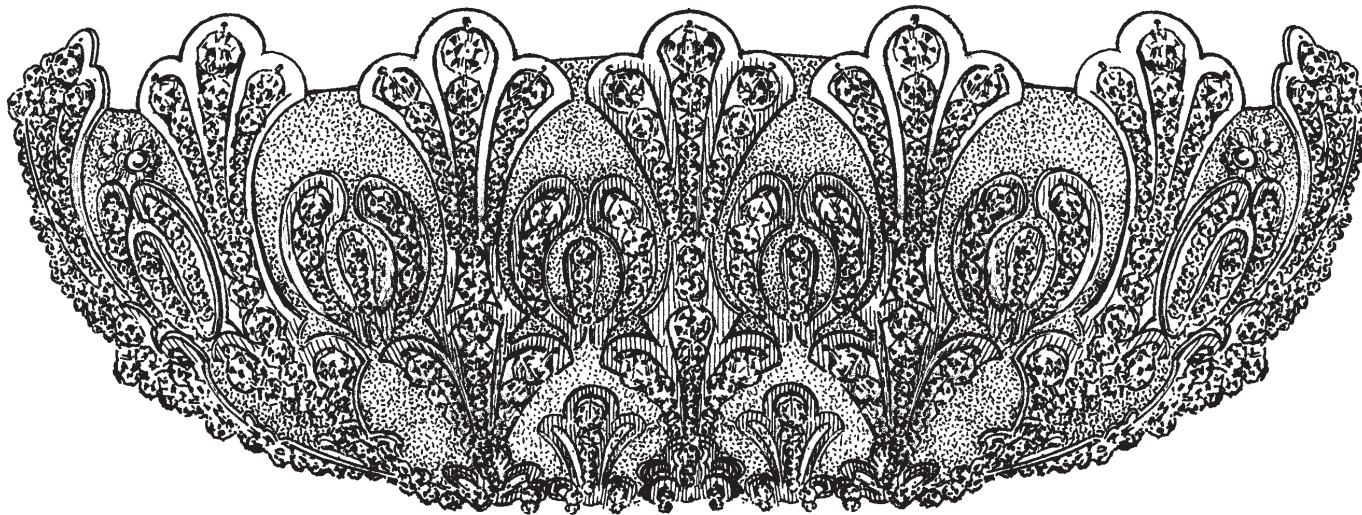
7



8

9

CHANDELIER 7846-\_\_\_\_S TRIM DIAGRAM  
(Finish Option)



THIS DESIGN IS THE PROPRIETARY  
TRADE DRESS/TRADEMARK OF  
SCHONBEK WORLDWIDE LIGHTING INC.

4 Lights  
Diameter: 17-1/2"  
Body Length: 6-1/2"  
Extension: 5-1/2"  
Hanging Weight: 6 lbs.

SCHONBEK®

See diagram on back page  
Follow steps in exact order  
Save this trim diagram for future reference

1


IMPORTANT

Person who opens carton should record the  
following information for future service.

CODE # \_\_\_\_\_ Four-digit number on outside of carton.  
PACKER # \_\_\_\_\_ See crystal package label.  
ORDER # \_\_\_\_\_ See crystal package label.

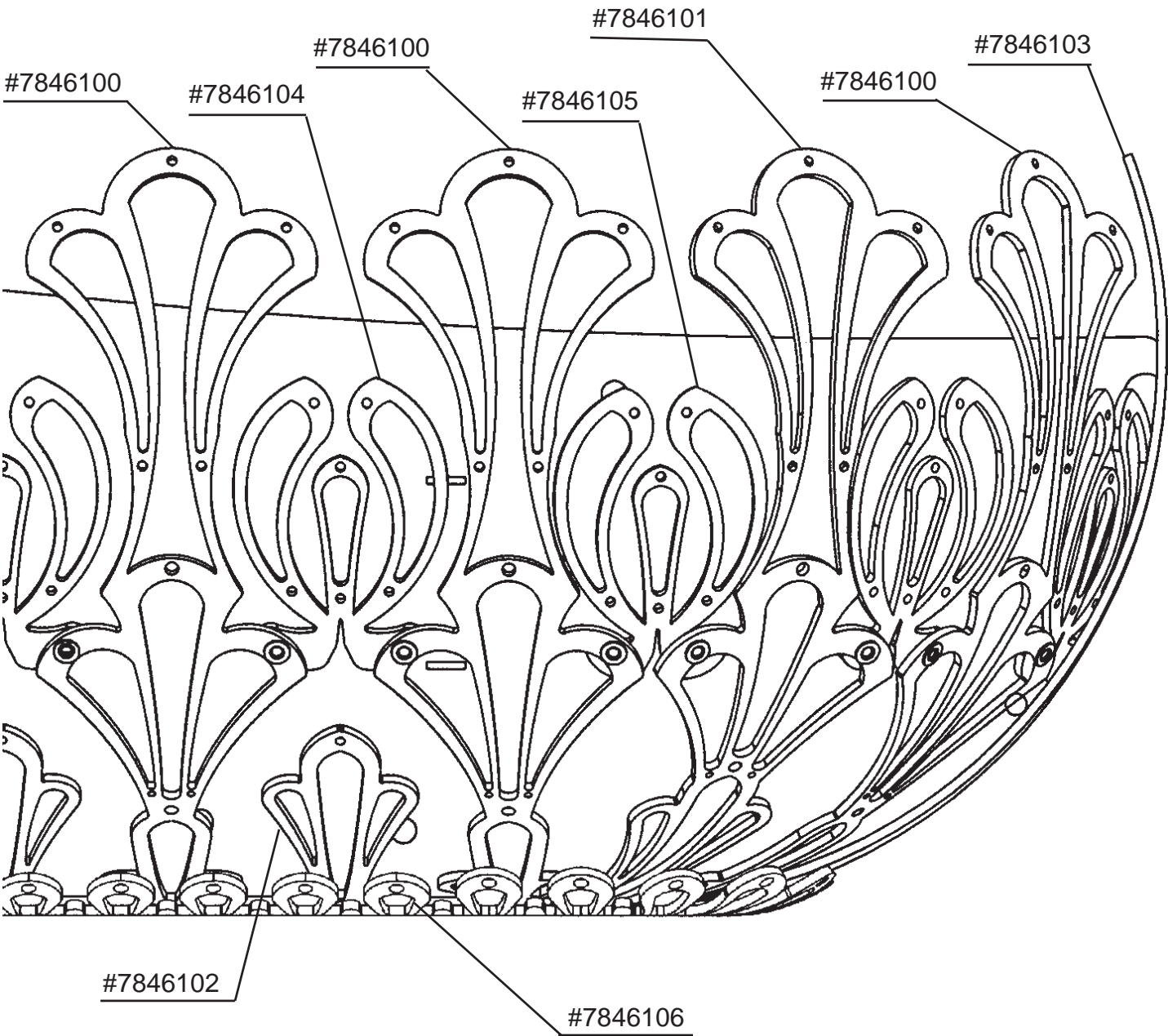
SCHONBEK IS A WORLD LEADER IN CHANDELIER DESIGN. PATENTS INCLUDE:  
#D397,495

Instructions for crystal trimming  
STEP 10



10

You will need 4 - C10  
25 Watts Recommended  
40 Watts Max



PART NUMBERS FOR  
SPARE PARTS

