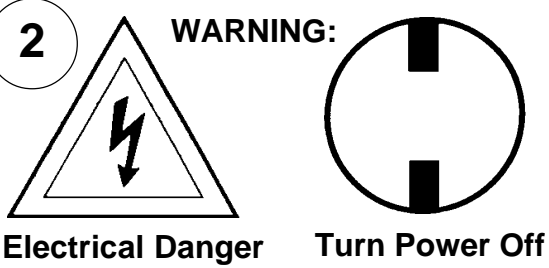
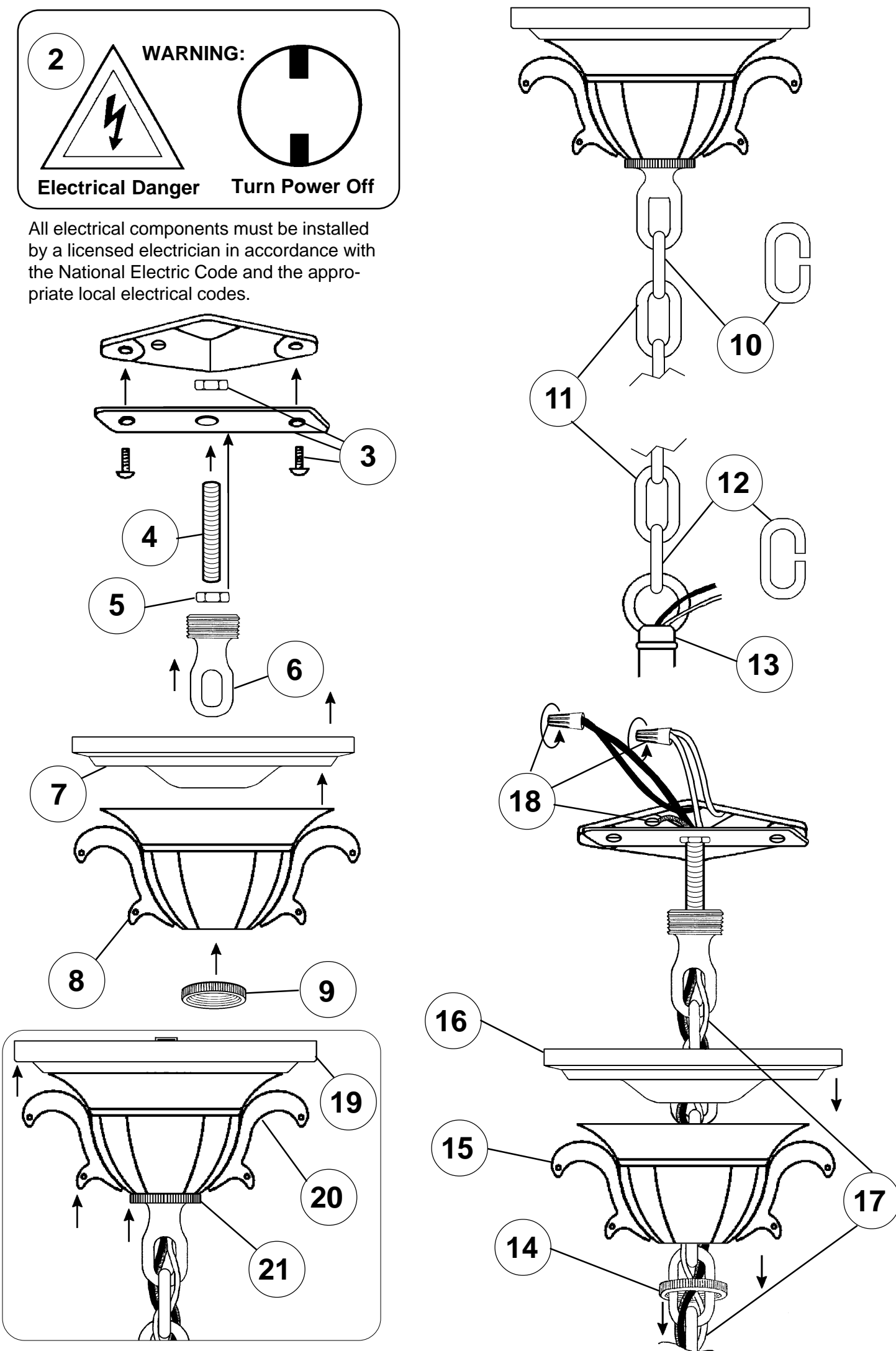


## Instructions for electrician STEPS 2 - 21

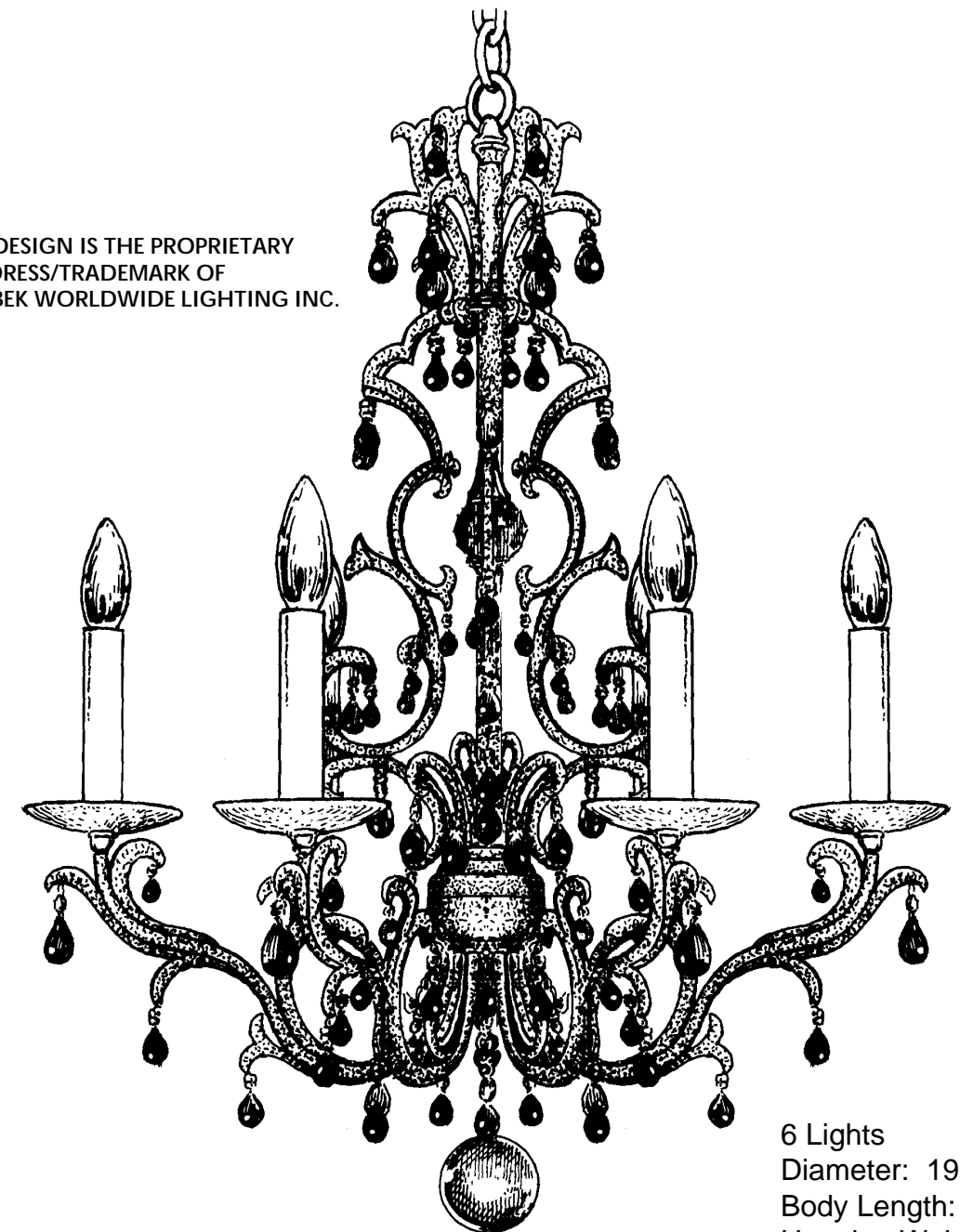


All electrical components must be installed by a licensed electrician in accordance with the National Electric Code and the appropriate local electrical codes.



## CHANDELIER 9876 TRIM DIAGRAM

**T**HIS DESIGN IS THE PROPRIETARY  
TRADE DRESS/TRADEMARK OF  
SCHONBEK WORLDWIDE LIGHTING INC.



6 Lights  
Diameter: 19"  
Body Length: 24"  
Hanging Weight: 8 lbs.

# SCHONBEK®

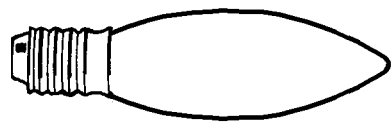
**See diagram on back page  
Follow steps in exact order  
Save this trim diagram for future reference**

**1** **IMPORTANT**  
*Person who opens carton should record the following information for future service.*

CODE #	_____	Four-digit number on outside of carton.
PACKER #	_____	See crystal package label.
ORDER #	_____	See crystal package label.

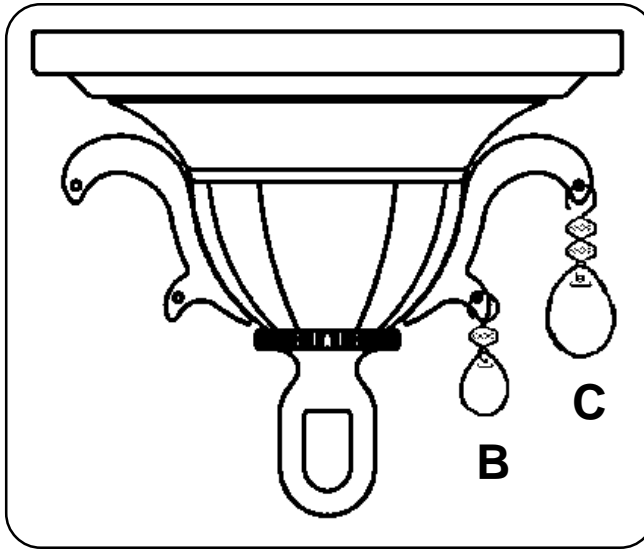
SCHONBEK IS A WORLD LEADER IN CHANDELIER DESIGN. PATENTS INCLUDE:  
#D532,925, #D532,924 & #D535,053

## Instructions for crystal trimming STEPS 22 - 29



22

You will need 6 - C10  
25 Watts Recommended  
60 Watts Max



23

Screw Crystal Ball "N589" onto bottom of chandelier. Tighten setscrew with tool provided.

24

Trim canopy first so that colors will be distributed properly. Use trim from trays "B" and "C".

**NOTE1:** Pinch the wire hooks to attach each crystal securely to frame.

**NOTE 2:** Scrollwork is asymmetrical, so that in the next step you will be attaching the crystals at different heights and points as you go down the chandelier.

25

Hang Crystal "A", on top inside scroll as indicated.

26

Using Crystal "B", work your way down the body of the chandelier, trimming from top to bottom. See indicated locations on diagram.

27

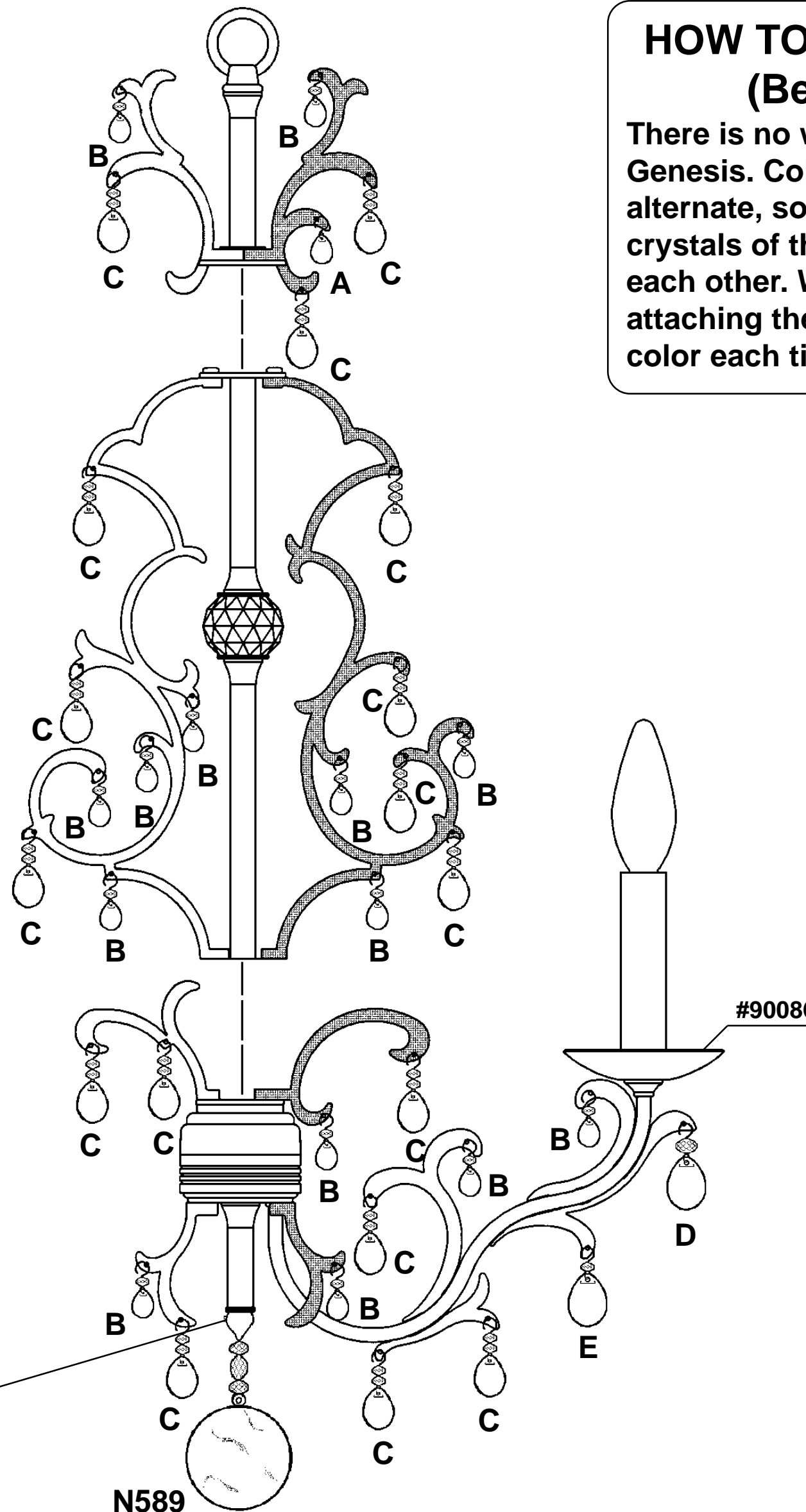
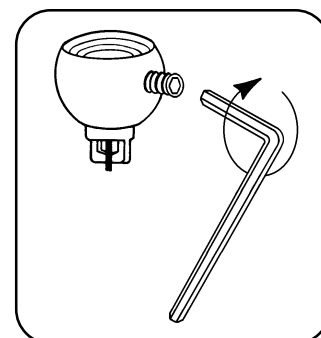
Using Crystal "C", again work your way down the body of the chandelier, trimming from top to bottom. See indicated locations on diagram.

28

Hang Crystal "D" on outer points of arms as indicated.

29

Hang Crystal "E" on arms as indicated.



## HOW TO TRIM GENESIS (Be Creative!)

There is no wrong way to trim Genesis. Colors are meant to alternate, so just avoid hanging crystals of the same color next to each other. We recommend attaching the crystals, a different color each time, in random order.

