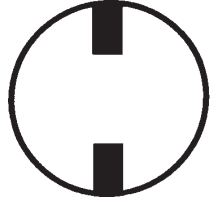
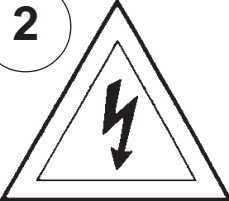


Instructions for electrician
STEPS 2 - 21

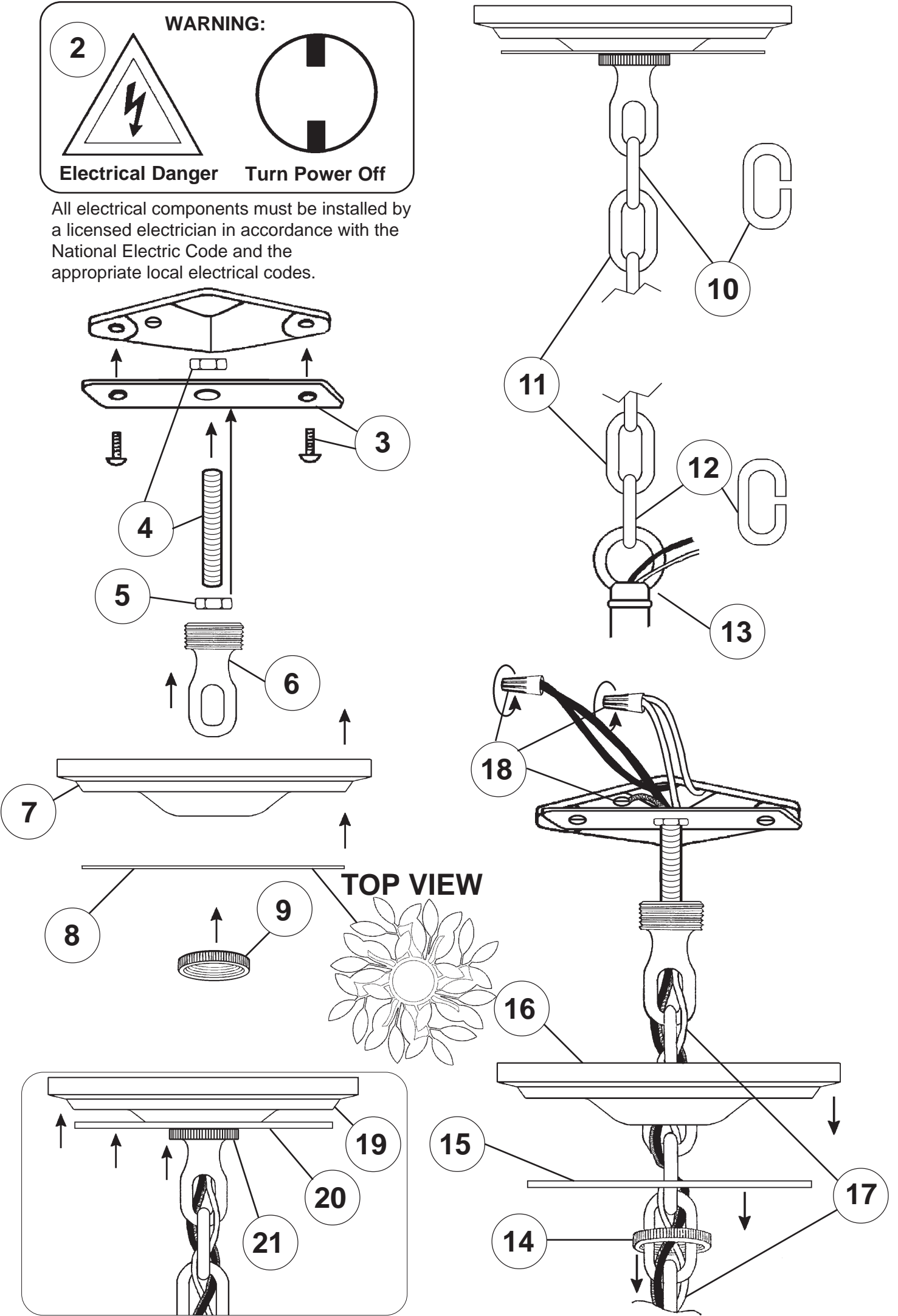
2



WARNING:

Electrical Danger Turn Power Off

All electrical components must be installed by a licensed electrician in accordance with the National Electric Code and the appropriate local electrical codes.



EK6507N-____S TRIM DIAGRAM
(Finish Option)



7 Lights
Diameter: 26-1/2"
Height: 26"
Hanging Weight: 16lbs.

THIS DESIGN IS THE PROPRIETARY
TRADE DRESS/TRADEMARK OF
SCHONBEK WORLDWIDE LIGHTING
INC.



SCHONBEK®



MAX 60 W

1

IMPORTANT
Person who opens carton should record the
following information for future service.

CODE # _____ Four-digit number on outside of carton.
PACKER # _____ See crystal package label.
ORDER # _____ See crystal package label.

SCHONBEK® is a member of the Swarovski company.

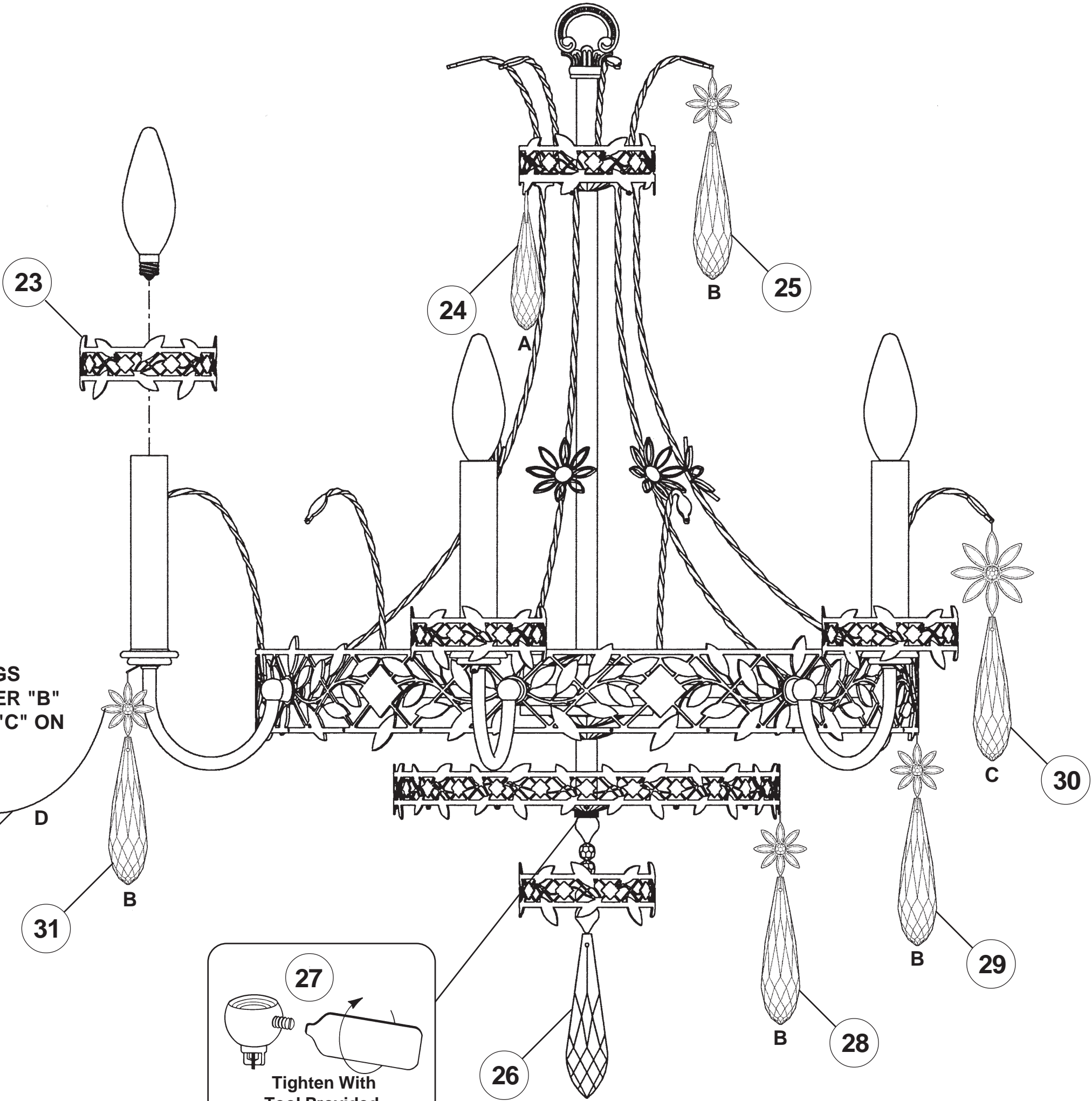
Instructions for crystal trimming
STEPS 22 - 32



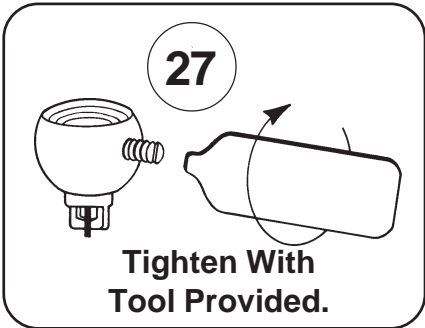
22

You will need 7 - B10
25 Watts Recommended
60 Watts Max

Install bulbs and be
sure to test fixture
BEFORE trimming.



NOTE: LETTER "D" SWAGS
FROM FLOWER ON LETTER "B"
TO FLOWER ON LETTER "C" ON
SCROLL



N12491-**