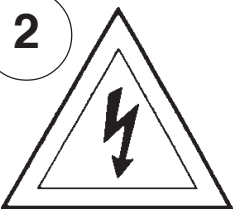


Instructions for electrician STEPS 2 - 18

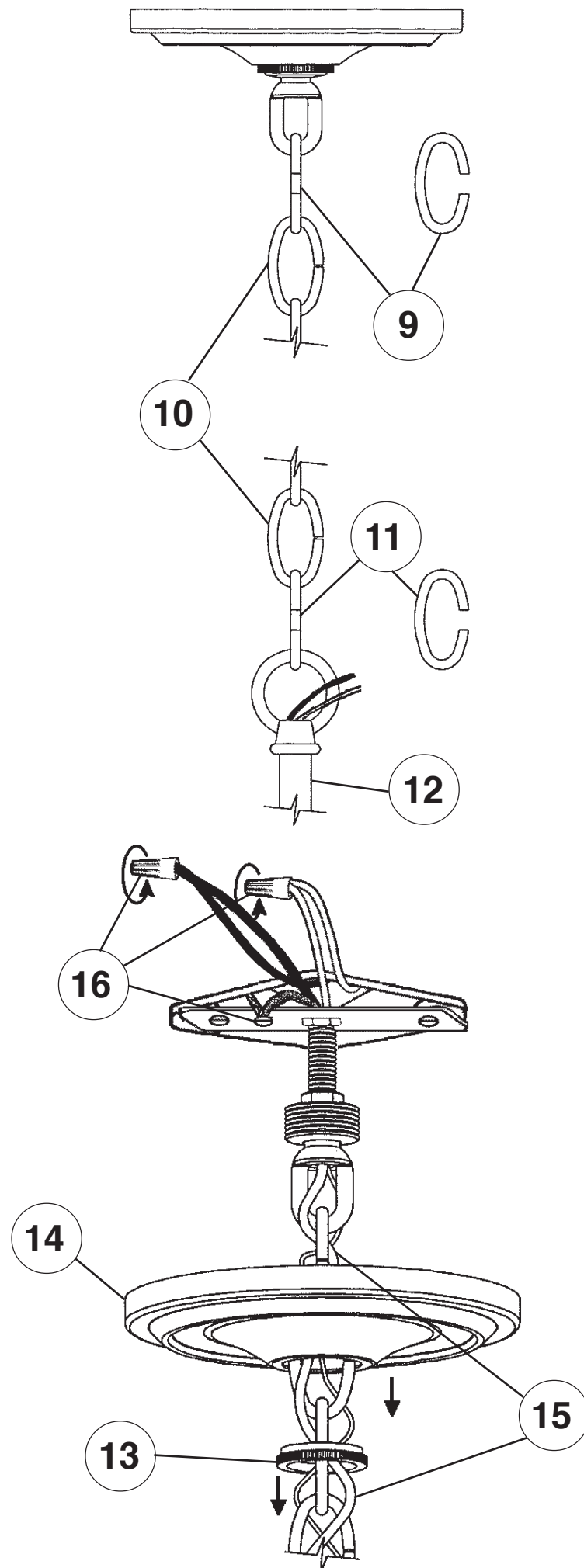
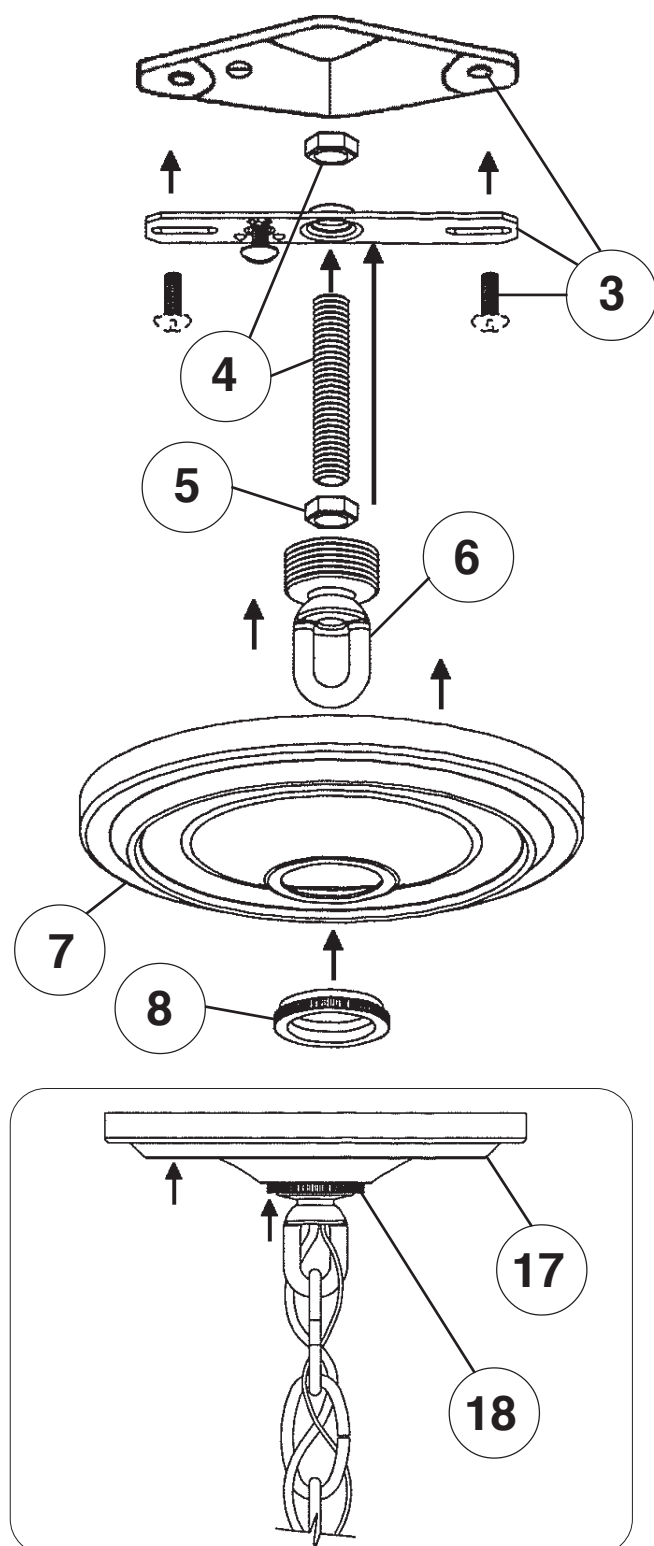
WARNING:



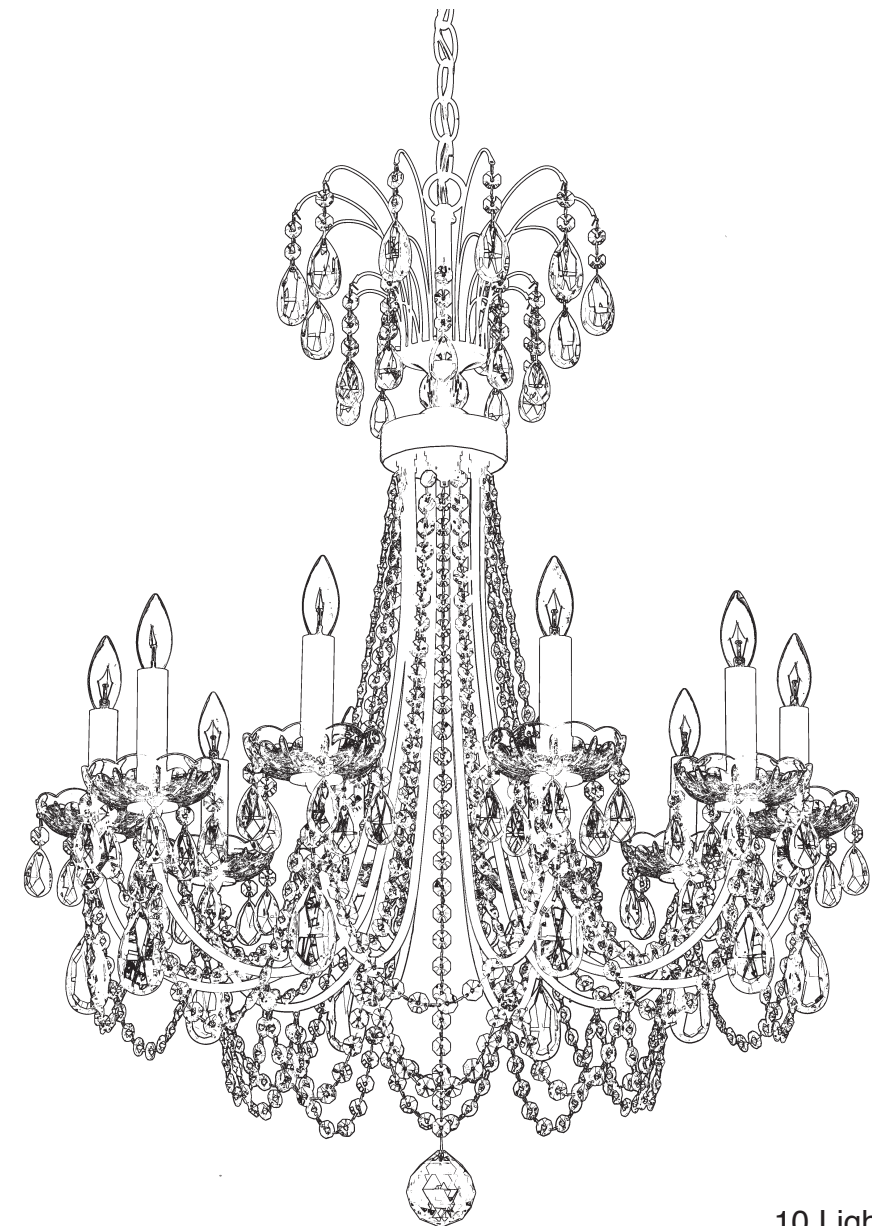
Electrical Danger

Turn Power Off

All electrical components must be installed by a licensed electrician in accordance with the National Electric Code and the appropriate local electrical codes.



LUCIA LU0003N-____H TRIM DIAGRAM (Finish Option)



10 Lights
Diameter: 25"
Body Length: 32"
Hanging Weight: 14lbs.

T HIS DESIGN IS THE PROPRIETARY
TRADE DRESS/TRADE MARK OF
SCHONBEK WORLDWIDE LIGHTING INC.

SCHONBEK®



MAX 60 W

IMPORTANT

1

Person who opens carton should record the following information for future service.

CODE # _____ Four-digit number on outside of carton.
PACKER # _____ See crystal package label.
ORDER # _____ See crystal package label.

Instructions for crystal trimming
STEPS 19 - 27

19



You will need 10 - B10
25 Watts Recommended
60 Watts Max

Install bulbs and be
sure to test fixture
BEFORE trimming.

