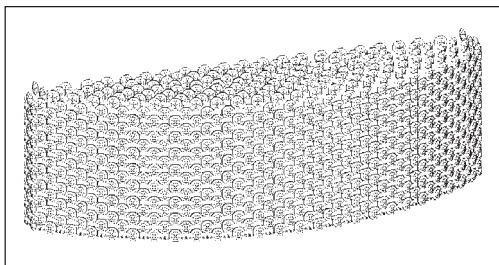
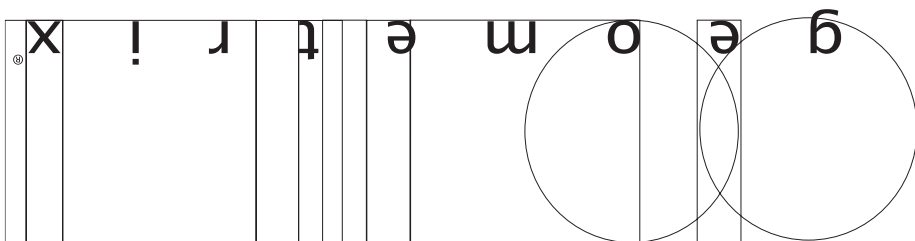


Important: Label on back contains important information on your crystal option. Please save in case you ever need to order matching crystal.



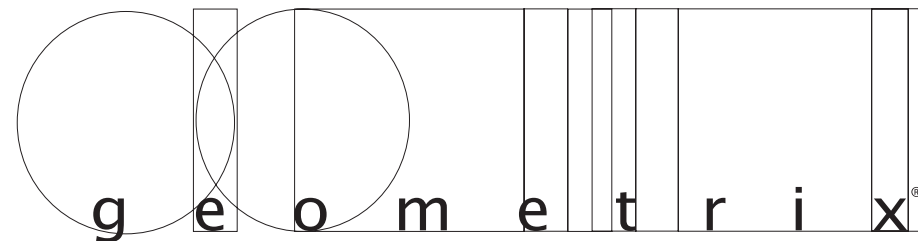
Trim Diagram  
Refrax™ Pendant REW2106-\*\*



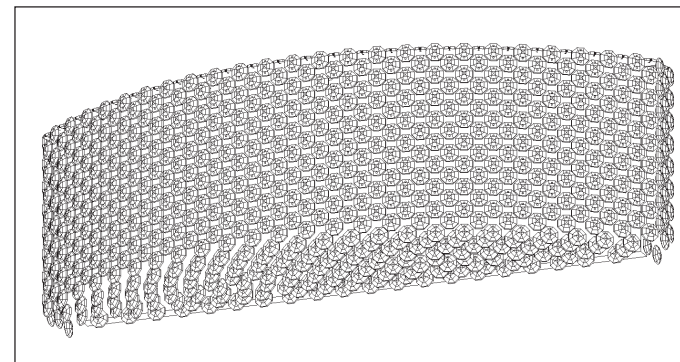
Schonbek Worldwide Lighting Inc., 61 Industrial Blvd., Plattsburgh NY 12901-1908  
Tel: 800.836.1892 or 518.563.7500 [www.schonbek.com](http://www.schonbek.com)

© 2006 SCHONBEK WORLDWIDE LIGHTING INC., A. SCHONBEK & CO. LTD. WORLDWIDE COPYRIGHT RESERVED

US PATENT: #5,109,325



Trim Diagram  
Refrax™ Pendant REW2106-\*\*



6 Lights  
Length: 21", Width: 6", Height: 6½"

Geometrix® is designed by Schonbek with Strass® crystal by Swarovski.

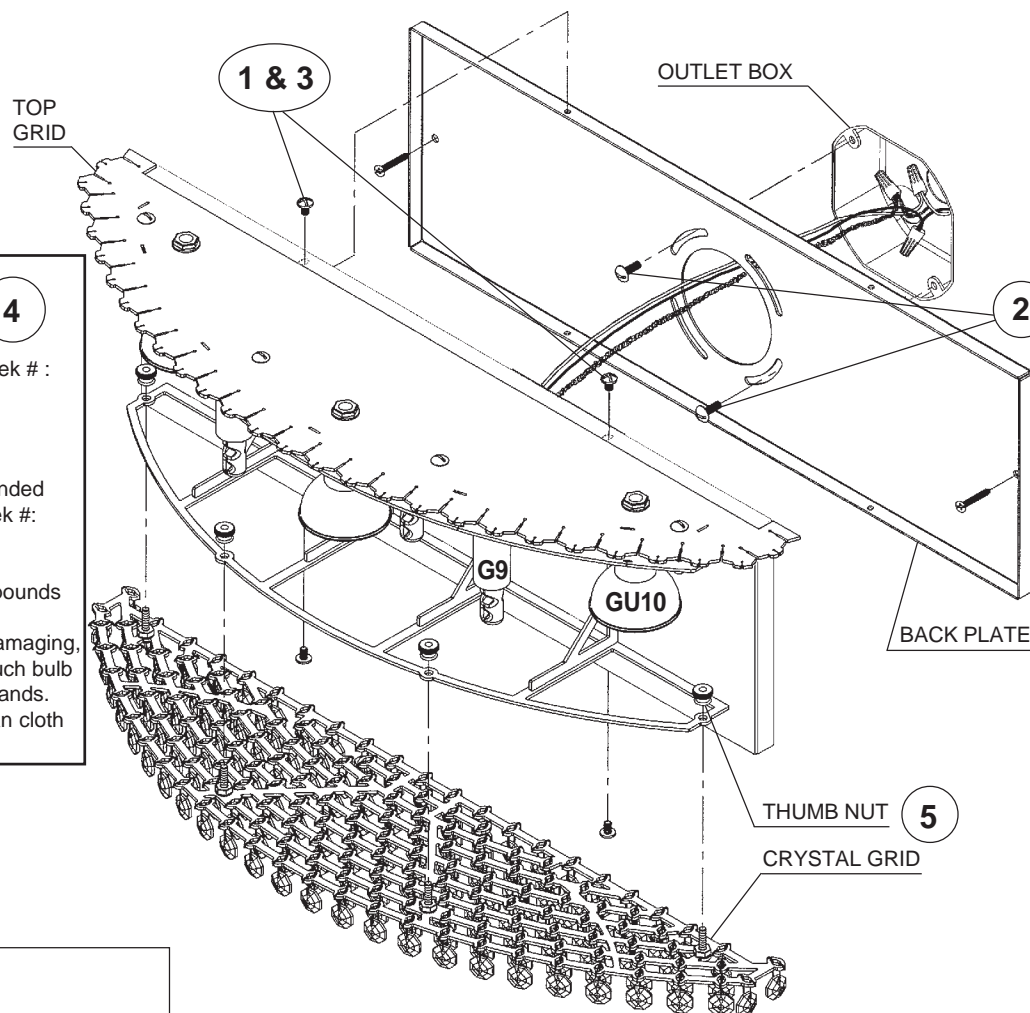
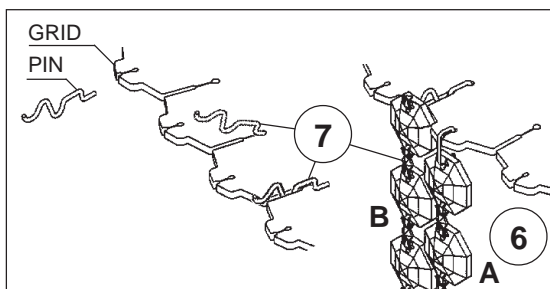
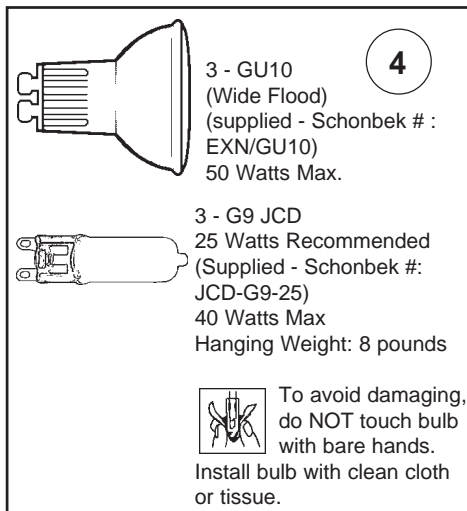


This design is the proprietary trade dress/trademark of Schonbek Worldwide Lighting Inc

Please save your trim diagram for future reference.

IMPORTANT: Label on back contains important information on your crystal option. Please save in case you ever need to order matching crystal.





## How to Install G9 & GU10 Bulbs and Refrax™ Wall Bracket:

**1** Loosen the (4) wall scone screws and separate the back plate from the wall scone. Feed stem and ground wires through back plate, then attach to power wires and ground wire in outlet box.

**2** Attach back plate to the outlet box with the (2) screws NOT supplied.

**3** Attach wall scone to back plate and tighten the four screws loosened previously.

**4** Use G9 JCD bulbs in the small sockets. Plug bulbs carefully but completely into sockets. Use only GU10 base bulb in the larger sockets. Align the legs, insert and turn clockwise carefully but completely. Only use bulbs marked "suitable for open luminaires" OR bearing this symbol:

**5** Install bottom crystal grid with four thumb nuts (already screwed onto grid) to bottom of the chandelier.

**6** Hang A chains first, following the crystal map. Hook the connectors into the pinholes located towards the outside of the top grid. See illustration to the left.

**7** Insert pins into top grid. Hang B chains by sliding the octagon with an open hole onto the pin. Chains B will nest into position between A chains. See illustration to the left.

