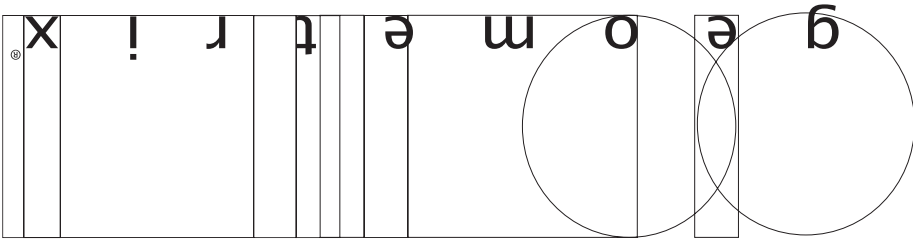


Trim Diagram
Vertex® Spotlight VC3S42**

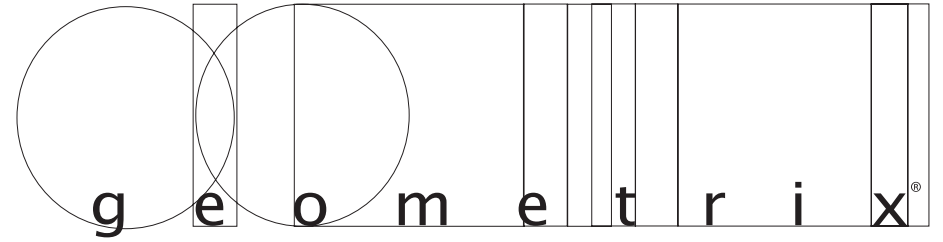
Important: Label on back contains important information on your crystal color. Please save in case you ever need to order matching crystal.



Schonbek Worldwide Lighting Inc., 61 Industrial Blvd., Plattsburgh NY 12901-1908
Tel: 800.836.1892 or 518.563.7500 www.schonbek.com

© 2005 SCHONBEK WORLDWIDE LIGHTING INC., A. SCHONBEK & CO. LTD. WORLDWIDE COPYRIGHT RESERVED

US PATENT #D522,169, #D521,678, #D522,687, #D522,685, #7,101,065, #D528,244 & #7,347,594



Trim Diagram
Vertex® Spotlight VC3S42**



1 Light
Diameter: 4" x 2"
Extension: 3"

Geometrix™ is designed by Schonbek with Strass® crystal by Swarovski.

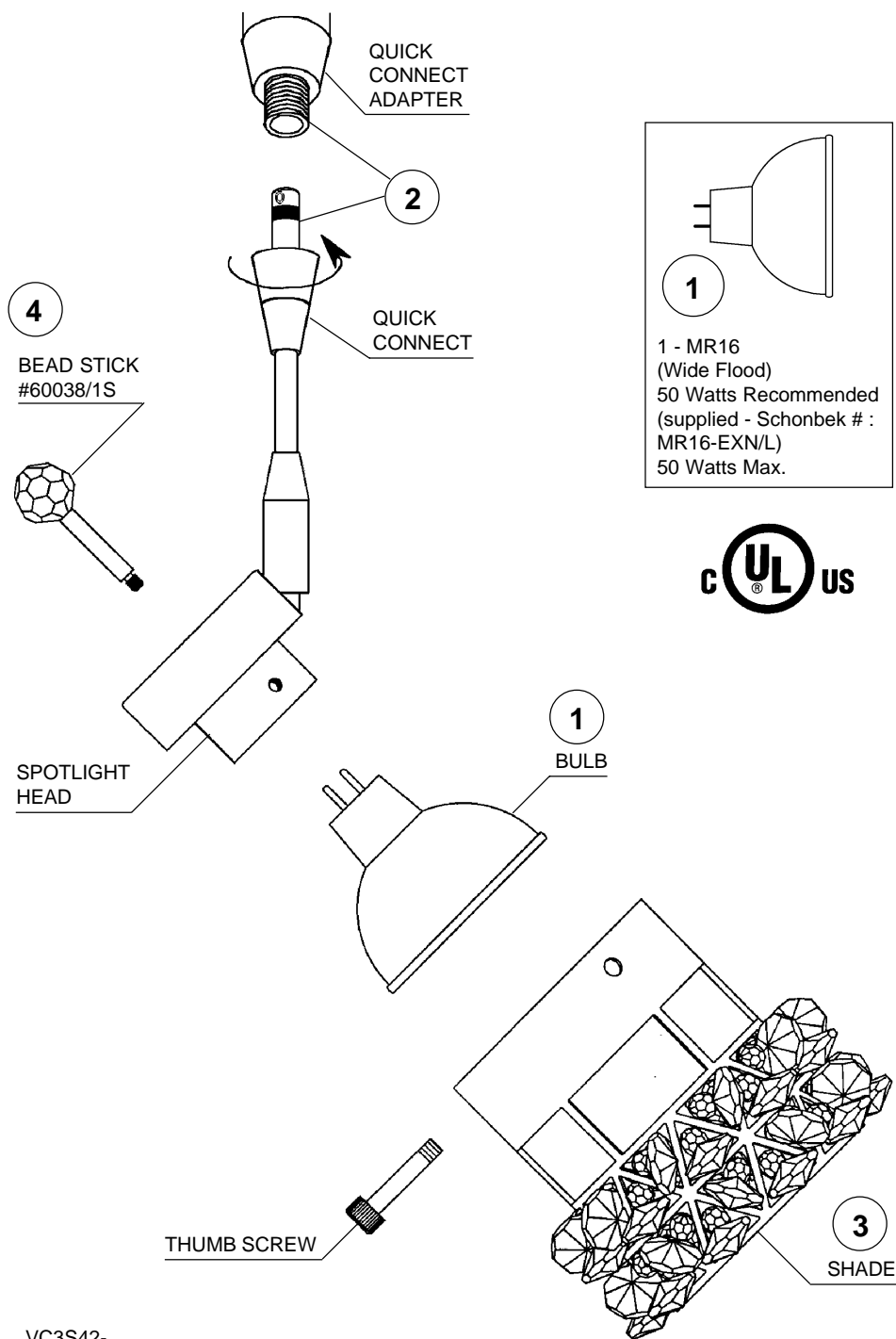


This design is the proprietary trade dress/trademark of Schonbek Worldwide Lighting Inc

Please save your trim diagram for future reference.

IMPORTANT: Label on back contains important information on your crystal color. Please save in case you ever need to order matching crystal.

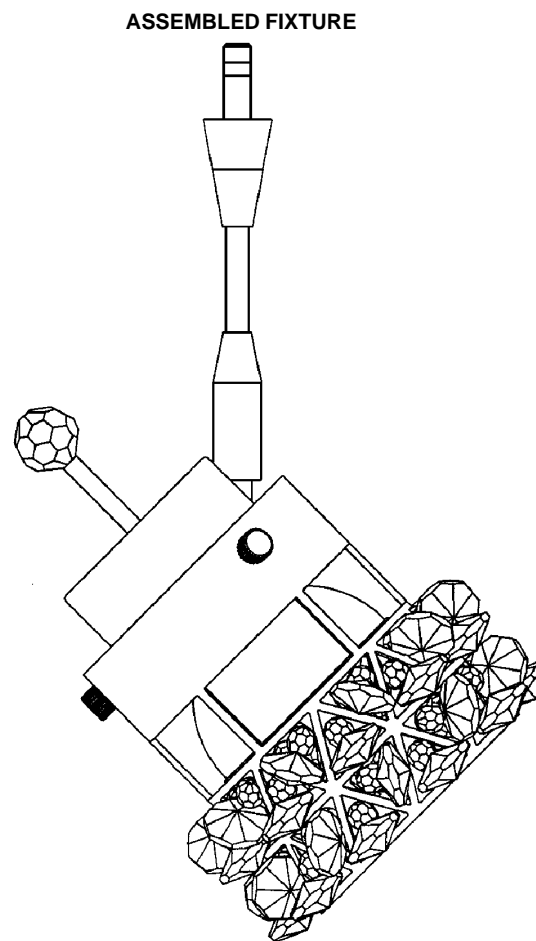




How to Install MR16 Bulb and Vertex® Spotlight:

Spotlights may be mounted to monorail systems, monopoints or line voltage track by coupling to the low voltage quick connect adapter.

- 1 Plug bulb carefully but completely into socket. Use only an MR16 glass covered lamp bulb.
- 2 Screw quick connect into quick connect adapter until it seats. If you adjust the orientation of the spotlight, be careful not to loosen the connection.
- 3 Position the shade over the spotlight head and line holes up for the thumb screws. Secure shade in place by carefully tightening the three (3) thumb screws provided.
- 4 Screw bead stick into the spotlight head until it seats.
- 5 Aim spotlight carefully using beadstick. ***WARNING: spotlight head gets very hot!***



REPLACING CRYSTAL:

If a crystal breaks, you'll see a bare pin sticking out of a hole in the framework.

