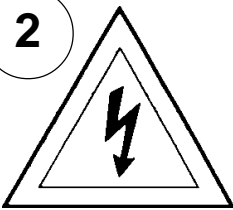


Instructions for electrician STEPS 2 - 21

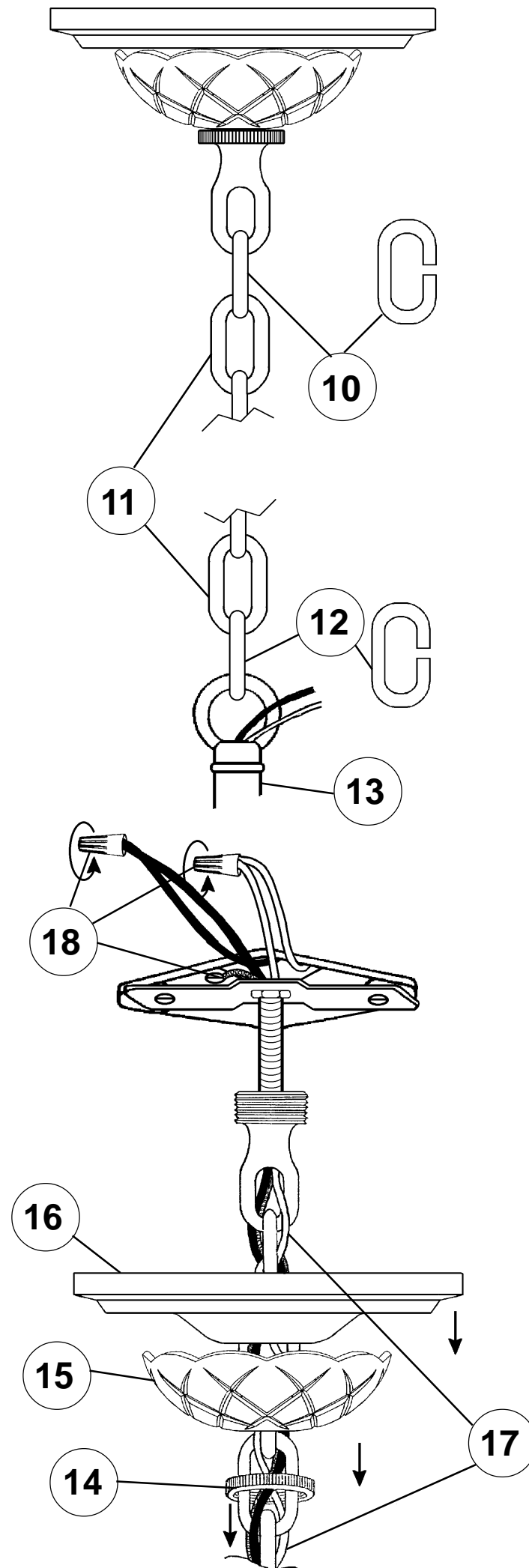
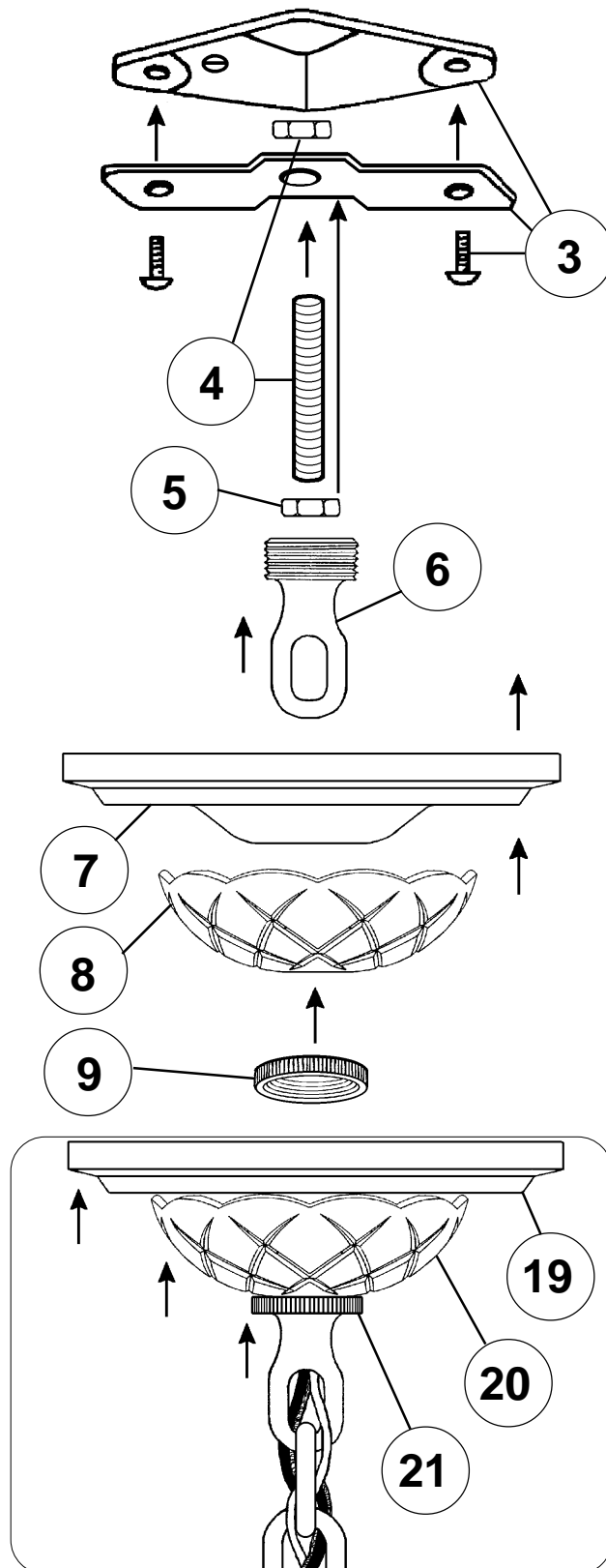
WARNING:



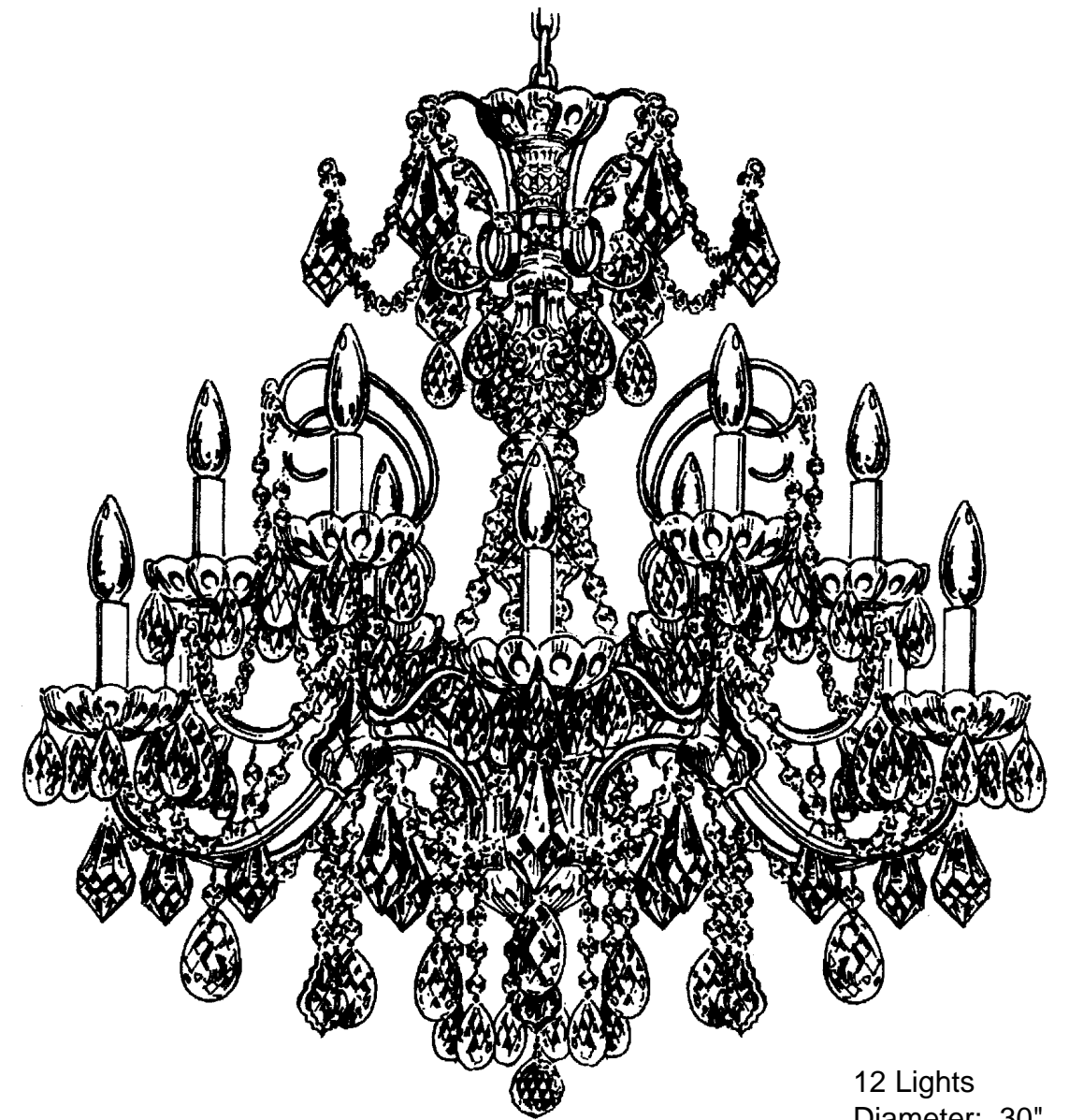
Electrical Danger

Turn Power Off

All electrical components must be installed by a licensed electrician in accordance with the National Electric Code and the appropriate local electrical codes.



CHANDELIER 1712-____ TRIM DIAGRAM (Finish Option)



12 Lights
Diameter: 30"
Body Length: 29-1/2"
Hanging Weight: 26 lbs.

THIS DESIGN IS THE PROPRIETARY
TRADE DRESS/TRADEMARK OF
SCHONBEK WORLDWIDE LIGHTING INC.

SCHONBEK®


See diagram on back page
Follow steps in exact order
Save this trim diagram for future reference

IMPORTANT

1 Person who opens carton should record the following information for future service.

CODE # _____ Four-digit number on outside of carton.
PACKER # _____ See crystal package label.
ORDER # _____ See crystal package label.

Instructions for crystal trimming
STEPS 22 - 39



22

You will need 12 - C10
25 Watts Recommended
60 Watts Max

Install bulb and be sure
to test fixture **BEFORE**
trimming.

