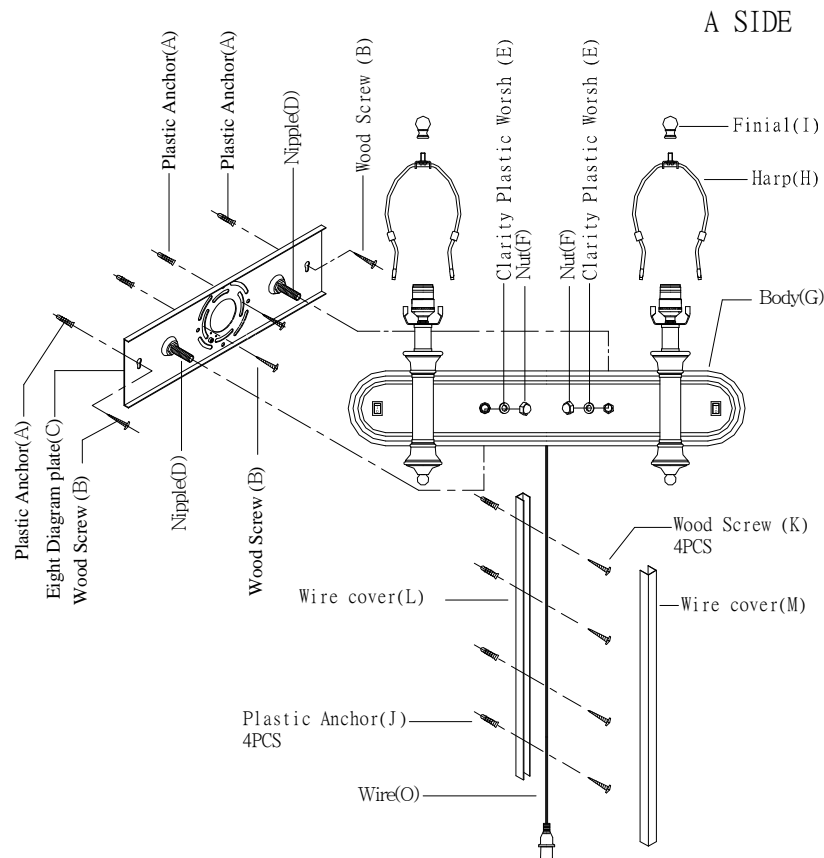


ASSEMBLY INSTRUCTIONS:

ITEM NO.: LA-60007W2L-1R

There are two ways for installation, this is way A.

1. Carefully unpack and lay out the parts as shown in illustration.
2. Drill four level holes on the wall, punch plastic anchor (A) into the holes. Fix the eight diagram plate (C) onto the wall with wood screw (B).
3. Attach lamp body (G) to eight diagram plate (C) through nipple (D), fix it with clarity plastic washer (E) and nut (F).
4. Insert harp (H) to saddle of lamp body (G).
5. Put shade (not included) on harp (H), screw it with finial (I).
6. Place the wire cover (L) along the wire, then drill four holes and punch plastic anchor (J) into it.
7. Fix the wire cover (L) into the wall with wood screw (K), have wire (O) run through wire cover (L).
8. Squeeze wire cover (M) into wire cover (L).
9. Use 2x60 W (Maximum) Type A bulb (bulb not included).



IMPORTANT SAFETY INSTRUCTIONS:

THIS PORTABLE LAMP HAS A POLARIZED PLUG (ONE BLADE IS WIDER THAN THE OTHER) AS A SAFETY FEATURE TO REDUCE THE RISK OF ELECTRIC SHOCK. THIS PLUG WILL FIT IN A POLARIZED OUTLET ONLY ONE WAY. IF IT DOES NOT FIT FULLY IN THE OUTLET, REVERSE THE PLUG. IF IT STILL DOES NOT FIT, CONTACT A QUALIFIED ELECTRICIAN. NEVER USE WITH AN EXTENSION CORD UNLESS THE PLUG CAN BE FULLY AND EASILY INSERTED. DO NOT ATTEMPT TO ALTER THE PLUG.

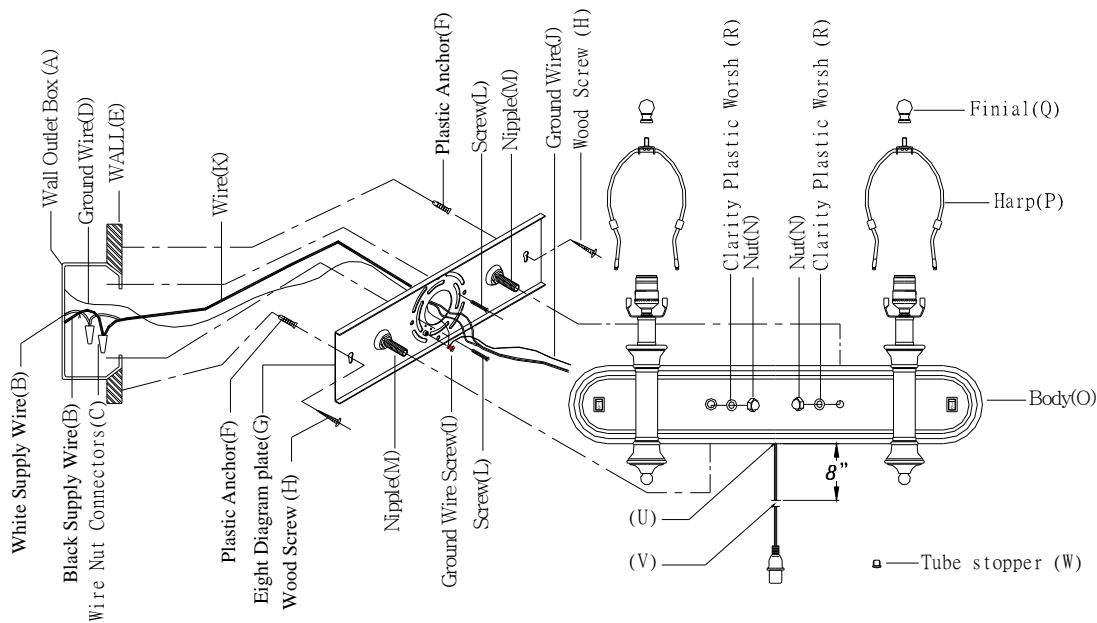
SAVE THESE INSTRUCTIONS FOR FUTURE REFERENCE. 327022B

ASSEMBLY INSTRUCTIONS:

ITEM NO.:LA-60007W2L-1R

There are two ways for installation, this is way B.

- Carefully unpack and lay out the parts as shown in illustration.
- Cut off the wire at the point where 8" of wire remains, and peel off the wire cover at the length of 14mm, pull it to back plate where it appears as cord (K). replace wire grommet with tube stopper (W) at spot (U).
- Drill two level holes to wall, punch plastic anchor (F) into the holes, fix the eight diagram plate (G) to wall with the wood screw (H) and screw (L).
- Connect power cord (B) and (K) with the wire nut connectors (C), positive to positive and negative to negative. Wrap it up with insulation tape.
- Connect ground wire (D) and (J) with ground wire screw (I).
- Attach lamp body (O) eight diagram plate (G) through the nipple (M), fix it with clarity plastic washer (R) and nut (N).
- Insert harp (P) to saddle of lamp body (O).
- put shade (not included) on harp (P), tighten it with finial (Q).
- Use 2x60 W (Maximum) Type A bulb (bulb not included) .



SAVE THESE INSTRUCTIONS FOR FUTURE REFERENCE.

327022B