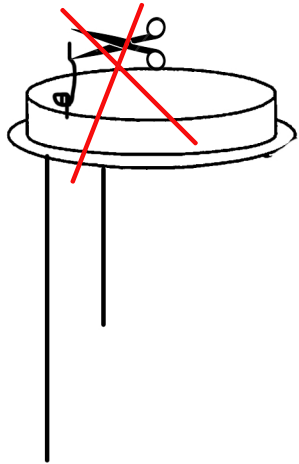




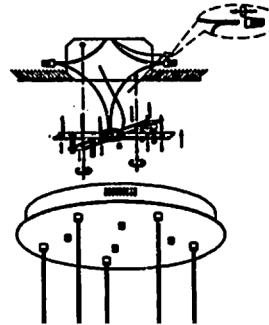
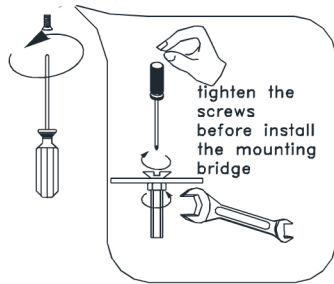
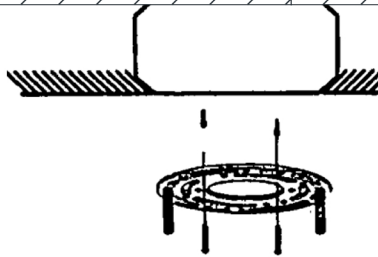
Contemporary
Lighting™

Installation Instructions

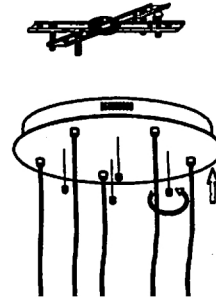
Model E22769-89PC



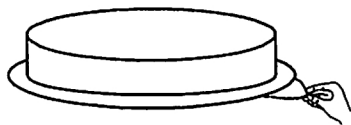
1.



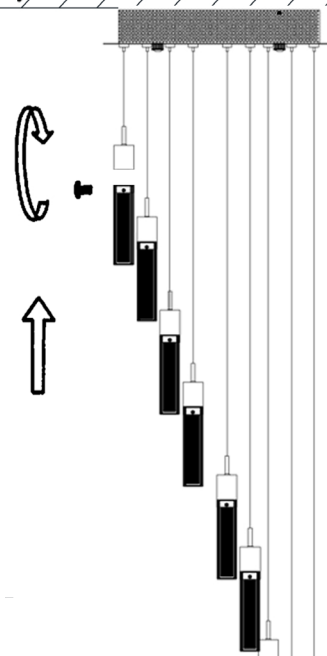
2.



3.



4.



5.

Warning: DO NOT CUT WIRES FOR LENGTH ADJUSTMENT!

1. Turn breaker off for circuit on outlet where fixture will be installed.
2. Loosen knot and adjust wire to your desired height. Knot is for extra protection. (Fig. 1)
*** DO NOT CUT WIRE FOR LENGTH ADJUSTMENT**
3. Remove mounting bracket from fixture and install to electrical box.
4. Wire fixture to wires in outlet box
- Green wire is for ground (Fig. 2)
5. Install fixture to back plate and tighten with nuts so fixture meets ceiling (Fig. 3)
6. Remove protective paper from canopy. Peel slowly so not to leave residue (Fig. 4)
7. Install glass into holders using 2 screws supplied. (Fig. 5)

Note: This fixture may be dimmed using a standard triac dimmer. For maximum adjustability, we recommended Lutron CL series dimmers.