



FINE ART

HANDCRAFTED LIGHTING

2020 LAUNCH PK



OUR MISSION

To create innovative lighting and studio glass defining luxury and elegance
in uniquely designed environments throughout the world.

ABOUT US

Fine Art Handcrafted Lighting is world-renowned for achieving high artistic standards in the creation of unique and original lighting designs of beautiful American studio glass, handcrafted metals and other unique materials with exquisite hand-applied finishes. We offer a comprehensive customization program that is designed entirely around you. Whether your goal is to create unique pieces of artwork, or to modify any one of our thousands of existing products to your specifications, no custom project is too big, including site-specific custom installations. Our highly experienced and collaborative team of designers, engineers and artisans have delivered exceptional lighting solutions for some of the most beautiful and diverse commercial markets around the world.

OUR CAPABILITIES



DESIGN PROCESS



METAL WORKING



STUDIO GLASS



FINISHING



QUALITY



CUSTOMIZATION

SHOWROOMS

MIAMI
3840 W 104th Street
Suite 20
Hialeah, FL 33018
305.821.3850

DALLAS
Dallas Market Center
#TM4705
2100 Stemmons Freeway
Dallas, TX 75207

HIGH POINT
210 E. Commerce St.
Space C229
High Point, NC 27260

MOSCOW
ArtPlay Design Center
Nizhnaya Siromyatnicheskaya Street, 10
6th Floor
Moscow, Russia



ABOUT AZU

FINISH OPTIONS	Silver leaf, gold leaf and winter blossom white gesso, all with white and gold brushed floral adornments, features hand assembled crystal flowers.
LIGHT SOURCE	Dedicated LED, not included.
LEAD TIME	12 weeks
NUMBER OF PIECES	9 Pendants, 2 Sconces.
DESIGNER	Fine Art Handcrafted Lighting, Made in America.



The goal of the Azu collection is to make a fashionably elegant statement with this posh floral design of hand cut crystal. “Azu” is short for Azucena, defined as a “Madonna Lily” in Spanish.

Azucena is also the name of our in-house CAD Supervisor, Azucena Carvajal, who collaborated in bringing this authentic collection. Azucena is a key female talent on the Fine Art Handcrafted Lighting design team and you can see her contributions in the details and refinement of each unique piece of the Azu assortment.

- Azu’s crystal consists of 3 different size flowers as the core of design. The flowers are in a small, medium and large size. These are individual hand cut petals that are individually hand assembled in a stem to create the most luxurious lit crystal flower that exist is today’s lighting industry.
- The hand cut detailing of each petal is what creates high optic reflection and refraction of crystal that in unparalleled.
- Azu is a flirtatious mingling of metal and crystal flowers and detailing. You should note the inner pistil of the flower is completed with either a crystal or metal bead and that the “style” or “stigma” of the flower is created by the bulb itself. Each large crystal flower is also detailed with metal petal accents to create the illusion of blooming life.
- The Azu candelabra styling is inspired by mid-century Danish forms.
- Azu introduces 3 new finishes of a gold and silver leaf with a brushed white and gold accent, and a white “gesso” with a white and gold accent. “Gesso” can be described as a “chalky” or “plastered” white finish that is somewhat matte. **The** finish detailing provides artistic dimension and movement mimicking that of a fresh floral arrangement creating a soft romantic atmosphere.
- We must also note the metal piping precision and detail of Azu. The Azu chandelier bodies are uniquely created by layering the “stems” of the flowers, providing a refined modern aesthetic.
- The collection boasts unique sculptural rings embellished with lit floral crystal.
- With a flare of modernity of traditional forms, Azu offers one-of- a-kind show-stopping crystal fixtures for the most luxurious of designed spaces. Yet, allows the casual designer to add a touch of glamour to an informal setting.

The first part of the paper discusses the importance of the research and the objectives of the study. It then presents a literature review of the existing research on the topic. The methodology section describes the research design and the data collection process. The results section presents the findings of the study, and the conclusion section summarizes the main findings and provides recommendations for future research.

The study was conducted in a laboratory setting. The participants were recruited from a local university and were assigned to two groups: the experimental group and the control group. The experimental group received the intervention, while the control group did not. The data was collected over a period of six weeks.

The results of the study show that the intervention had a significant positive effect on the outcome variable. The experimental group showed a significant improvement in the outcome variable compared to the control group. The findings suggest that the intervention is effective in improving the outcome variable.

The conclusion of the study is that the intervention is effective in improving the outcome variable. The findings suggest that the intervention is a promising approach for improving the outcome variable. Further research is needed to confirm the findings and to explore the long-term effects of the intervention.



915650-2 (Shown in Gold Leaf)
H . 29" (74 cm) x W. 9.25" (24 cm) x D. 8" (20 cm)



915340-1 (Shown in Silver Leaf)
H. 35" (90 cm) W. 55" (140 cm)

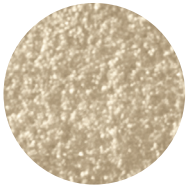
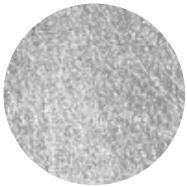
Min. Height: 94" (98 cm) Max Height: 97" (245 cm)

Upper & lower lights are wired independently
for single or dual light control.



915240-23 (Shown in Gold Leaf, Black Fabric Shade with
with inner metallic gold lining)
H. 24" (61 cm) W. 34.5" (88 cm)

Min. Height: 39" (98 cm) Max Height: 97 (245 cm)



warm



cool

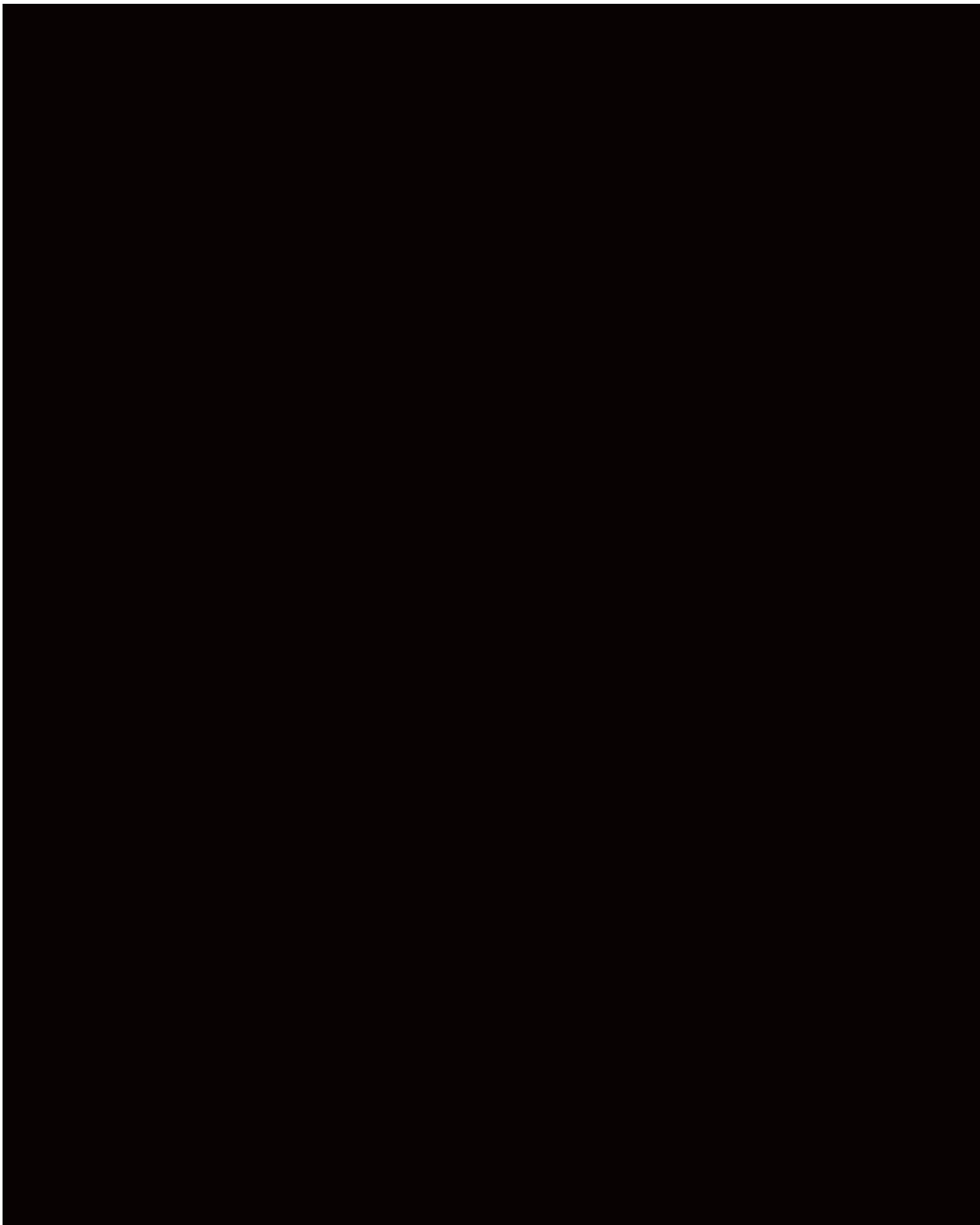


ABOUT VESTA

FINISH OPTIONS	Silver leaf canopies with mottled white glass drops and gold leaf canopies with mottled amber glass drops.
LIGHT SOURCE	Dedicated LED (included)
LEAD TIME	8 weeks.
NUMBER OF PIECES	14 Canopy configurations.
DESIGNER	Fine Art Handcrafted Lighting, Made in America.



- Created to bring natural earthly forms to a design space, Vesta is inspired by one of the largest asteroids in our solar system.
- Each piece of Vesta glass has soft contoured indentations and is individually hand worked and blown by our talented glass artisans. No two pieces will be exact.
- Vesta is truly a display of lit contemporary art glass.
- Vesta provides a ghostlike illumination where light is pushed through the clear glass design within the diffused colored glass, creating a dramatic lighting effect.
- The amber glass is warm and evocative of sunlight, while the white glass suggests the cool hues of moonlight.
- The Vesta glass pulls hues of similar colors represented in our Natural Inspirations and Nest collections.
- The white Vesta glass is designed with a silver leaf canopy.
- The amber Vesta glass is designed with a gold leaf canopy.





869040-22 (Shown in Silver Leaf with
10 White Studio Glass globes)
W. 22" (56 cm)

Min. Height: 14" (36 cm-) Max Height: 129" (328 cm)



869040-22 (Shown in Soft Gold Leaf with
10 Amber Studio Glass globes)
W. 22" (56 cm)

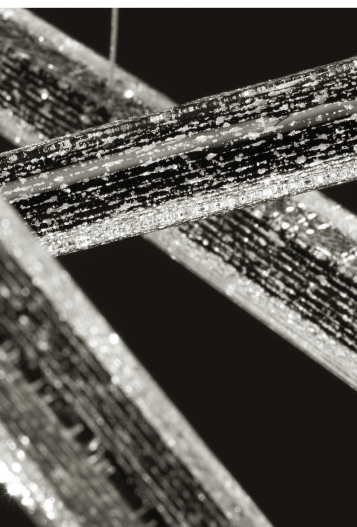
Min. Height: 14" (36 cm-) Max Height: 129" (328 cm)



#like

ELEVATE

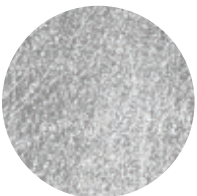
Lines we love.



DIMENSIONAL



METALLIC



To view entire collection visit finearthl.com/elevate

ABOUT ELEVATE

FINISH OPTIONS	Silver Leaf or Soft Gold Leaf with choice of 5 hand-blown American studio glass elements.
STUDIO GLASS OPTIONS	Crystal Stardust Spires, Ebony Stardust Spires, Meteorite, Dichroic Plumes, White Plumes
LIGHT SOURCE	Integrated LED (canopy)
LEAD TIME	4 weeks.
NUMBER OF PIECES	5 Pendants
DESIGNER	Fine Art Handcrafted Lighting, Made in America.



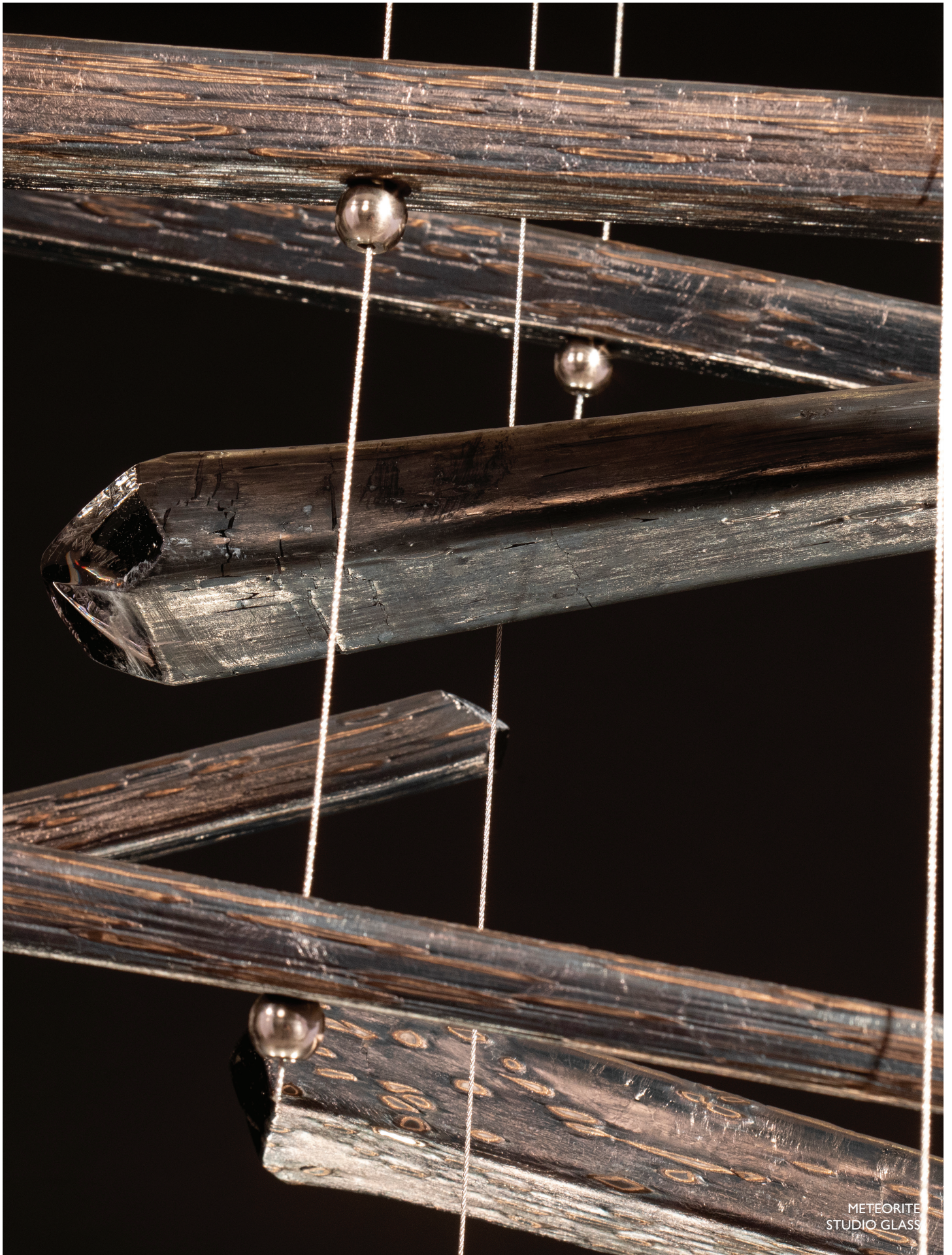
- The lines we love! Lines create some of the most beautiful things the human eye can see. The thought of how impactful just a simple line can be was the inspiration behind Elevate “spires”. The awe of city skylines and nature’s offerings, from zebras and sunsets, stimulated this concept.
- Influenced by even the natural aging process of laugh lines and wrinkles that tell a story of a life lived, to the society of hashtags, this is destined to be one of today’s most #liked line creations.
- These hand-cut pulled glass spires are symmetry in motion. These spires of glass, adjusted by your individual design, make up a performance of illuminated glass set to define a space.
- This collection inspires designers to create something unique, allowing the freedom of movement.
- The glass is hand pulled, cut, and polished in our Miami Art glass studio with additions of mica to give luster and a quartz-like quality to each spire. Each piece is individually unique.
- When illuminated the glass emits a warm and organic glow.
- The LED down-lit canopy provides tremendous light output.
- Meteorite Elevate transcends your environment to new heights.
- The meteorite glass is like no other glass on the market. We create a metallic finish by doing a reduction finish on the glass. This reduction creates a rough finish with iridescent metallics that, when lit from above, adds pure intrigue.
- Few will recognize this Meteorite glass as a hand pulled glass. It has been described to have a shiny “tree bark” or slate like presence and may be described as “industrial.”

The first part of the paper discusses the importance of the research and the objectives of the study. It then presents a literature review of the existing research on the topic. The methodology section describes the research design and the data collection process. The results section presents the findings of the study, and the conclusion section summarizes the main findings and provides recommendations for future research.

The study was conducted in a laboratory setting. The participants were recruited from a local university and were assigned to two groups: the experimental group and the control group. The experimental group received the intervention, while the control group did not. The data was collected over a period of six weeks.

The results of the study show that the intervention had a significant positive effect on the outcome variable. The experimental group showed a significant improvement in the outcome variable compared to the control group. The findings suggest that the intervention is effective in improving the outcome variable.

The conclusion of the study is that the intervention is effective in improving the outcome variable. The findings suggest that the intervention is a promising approach for improving the outcome variable. Further research is needed to confirm the findings and to explore the long-term effects of the intervention.



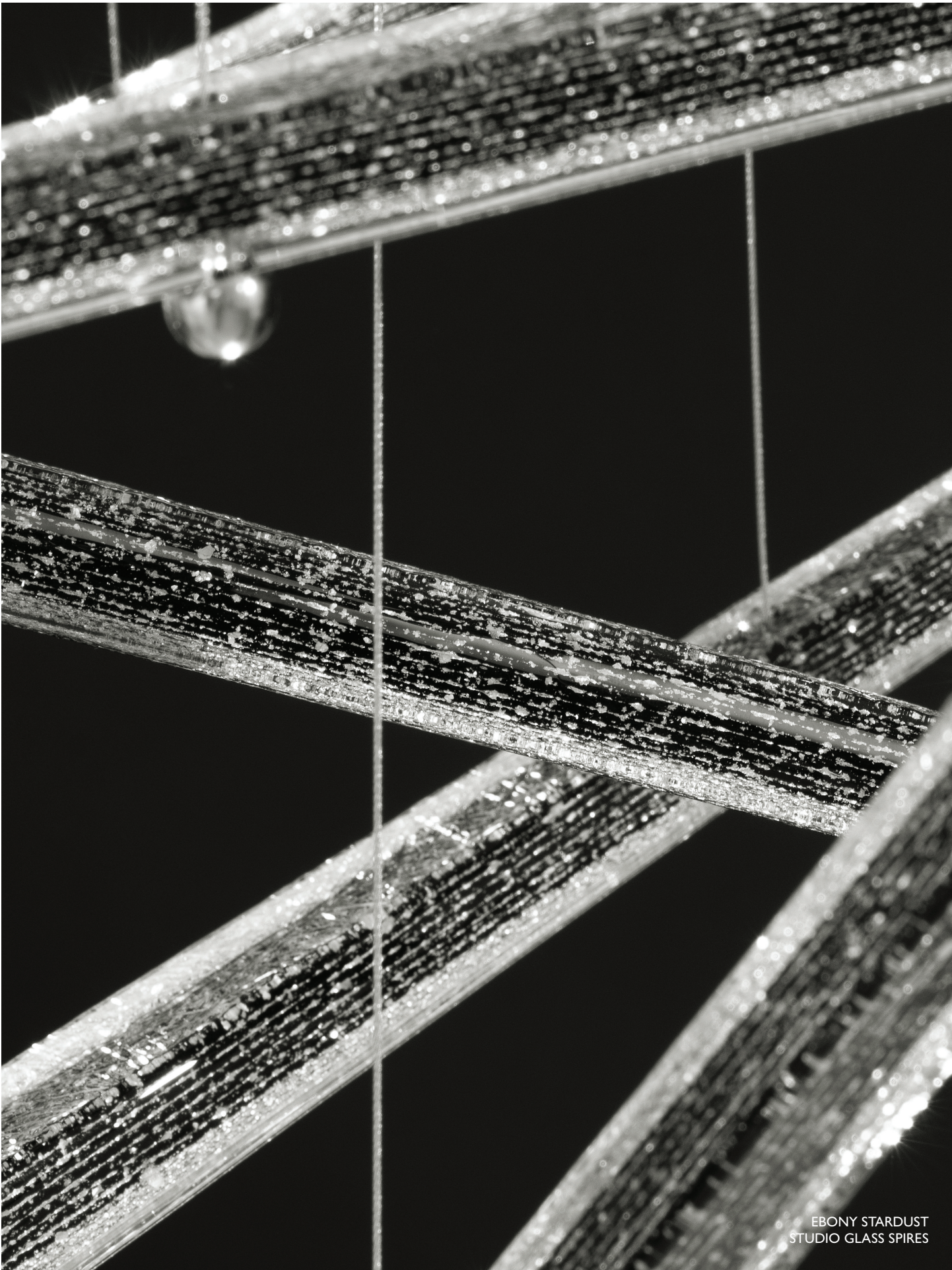
METEORITE
STUDIO GLASS



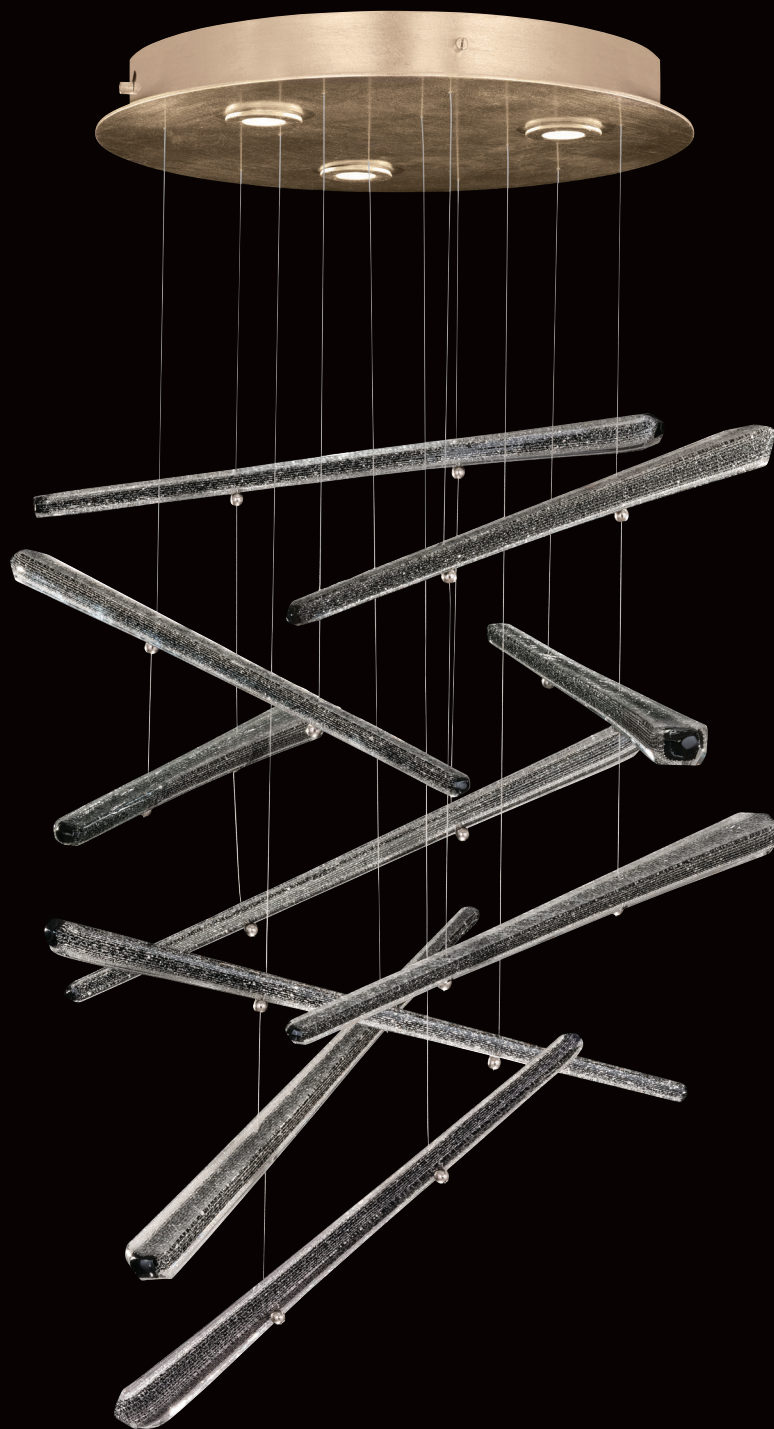
894840-252 (Shown in Soft Gold Leaf with
20 Meteorite Studio Glass)
H. 35" (90 cm) W. 55" (140 cm)

Min. Height: 65" (165 cm) Max Height: 120" (305 cm)

To view entire collection visit finearthl.com/elevate



EBONY STARDUST
STUDIO GLASS SPIRES

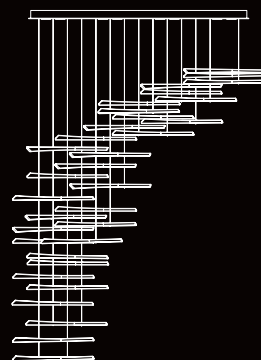
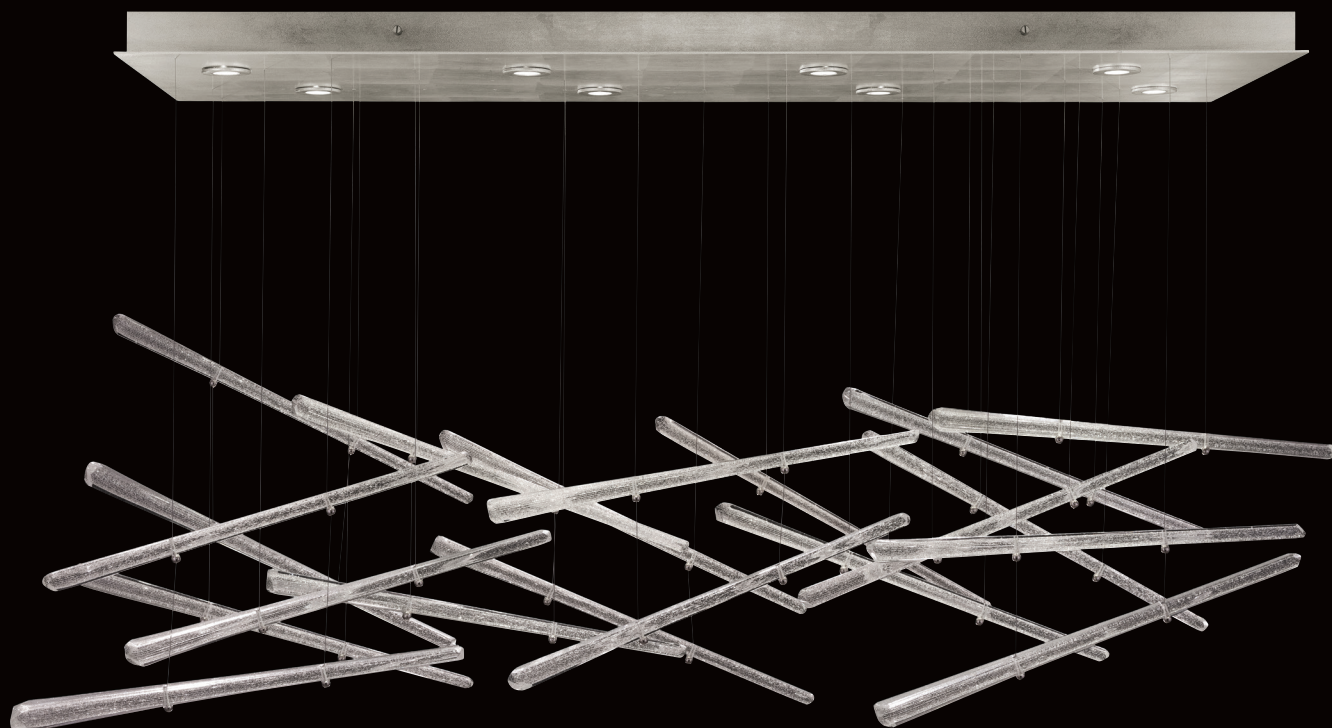


895640-141 (Shown in Silver Leaf with
10 Ebony Stardust Studio Glass Spires)
W. 18"

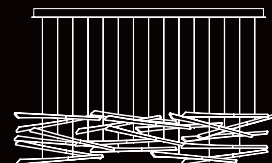
Min. Height: 23" Max Height: 120"



CRYSTAL STARDUST
STUDIO GLASS SPIRES



Configuration 1



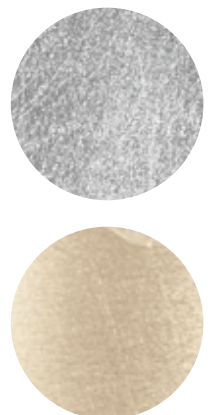
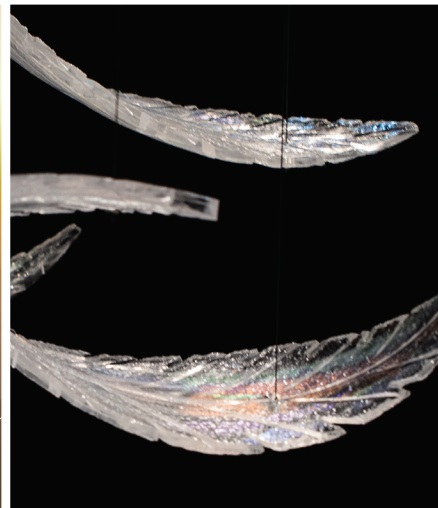
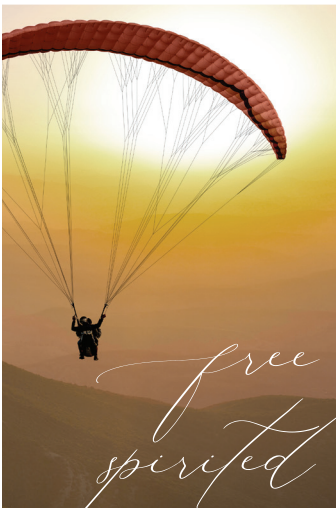
Configuration 2

894840-132 (Shown in Silver Leaf with
32 Crystal Stardust Studio Glass Spires)
W. 62"

Configuration 1:
Min. Height: 48" Max Height: 120"
Configuration 2:
Min. Height: 16" Max Height: 120"

ELEVATE

"Light" as a feather.



ABOUT ELEVATE

FINISH OPTIONS	Silver Leaf or Soft Gold Leaf with choice of 4 hand-blown American studio glass elements.
LIGHT SOURCE	LED
NUMBER OF PIECES	5 Pendants
DESIGNER	Fine Art Handcrafted Lighting, Made in America.



FAHL has created a collection destined to inspire. "Elevate" establishes a platform that can unlock design concepts in unlimited vertical and horizontal spaces. The suspension of uniquely designed elements in American studio glass allow for infinite opportunities in space design. From our pre-configured canopies with LED down lighting, to custom elements created for site-specific large-scale installations, Elevate is truly works of Fine Art!. Challenge us to "Elevate" your uniquely designed environment.

- With Elevate Plume, you can now evoke a tranquil sanctuary of art glass lighting. Our "Plumes" create a serene illusion of feathers drifting along in the breeze, simply floating in space. This collection was motivated by the concept of positive energy.
- Plume Elevate will bring wistful joy to a design space, reminiscent of the feelings conjured up from flying a kite, daydreaming, hang-gliding or a relaxing spa day.
- Stir up the senses with hand-blown, sculpted and hand-cut Plume art glass, suspended from adjustable cords on an LED lit canopy.
- Each plume can be manipulated to preference on-site and to create unique installations time and time again.
- Each Plume requires approximately 8 hours of glass artistry to come to life.
- Plume comes with the option of Dichroic glass or a translucent mixture of clear crystal and white glass.

"Plume Elevate" as a feather



DICHOIC STUDIO GLASS PLUMES



Configuration 1



Configuration 2

895840-111 (Shown in Silver Leaf with
20 Dichroic Studio Glass Plumes)
W. 32"

Configuration 1:
Min. Height: 52" Max Height: 120"
Configuration 2:
Min. Height: 34" Max Height: 120"



WHITE STUDIO GLASS PLUMES



895140-221 (Shown in Soft Gold Leaf with
12 White Studio Glass Plumes)
W. 48"

Min. Height: 16" Max Height: 120"

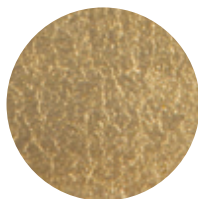
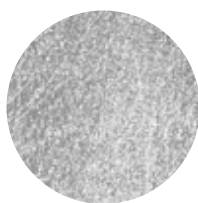
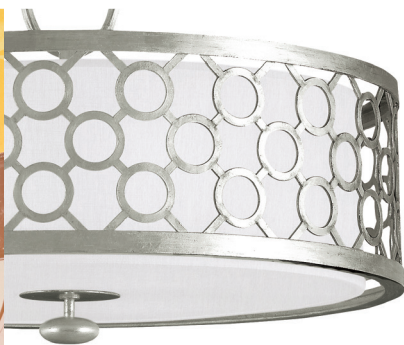


instrumental



fresh
ALLEGRETTO

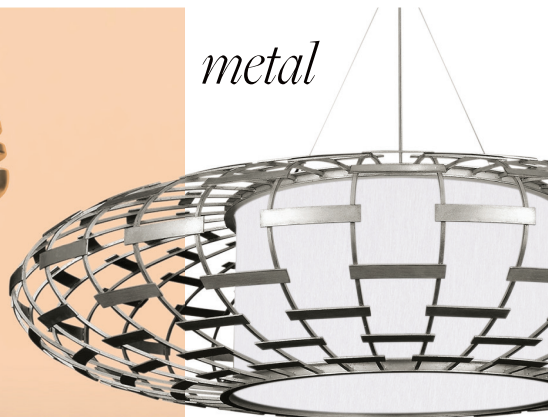
Let the rhythm move you!



soft classical



metal

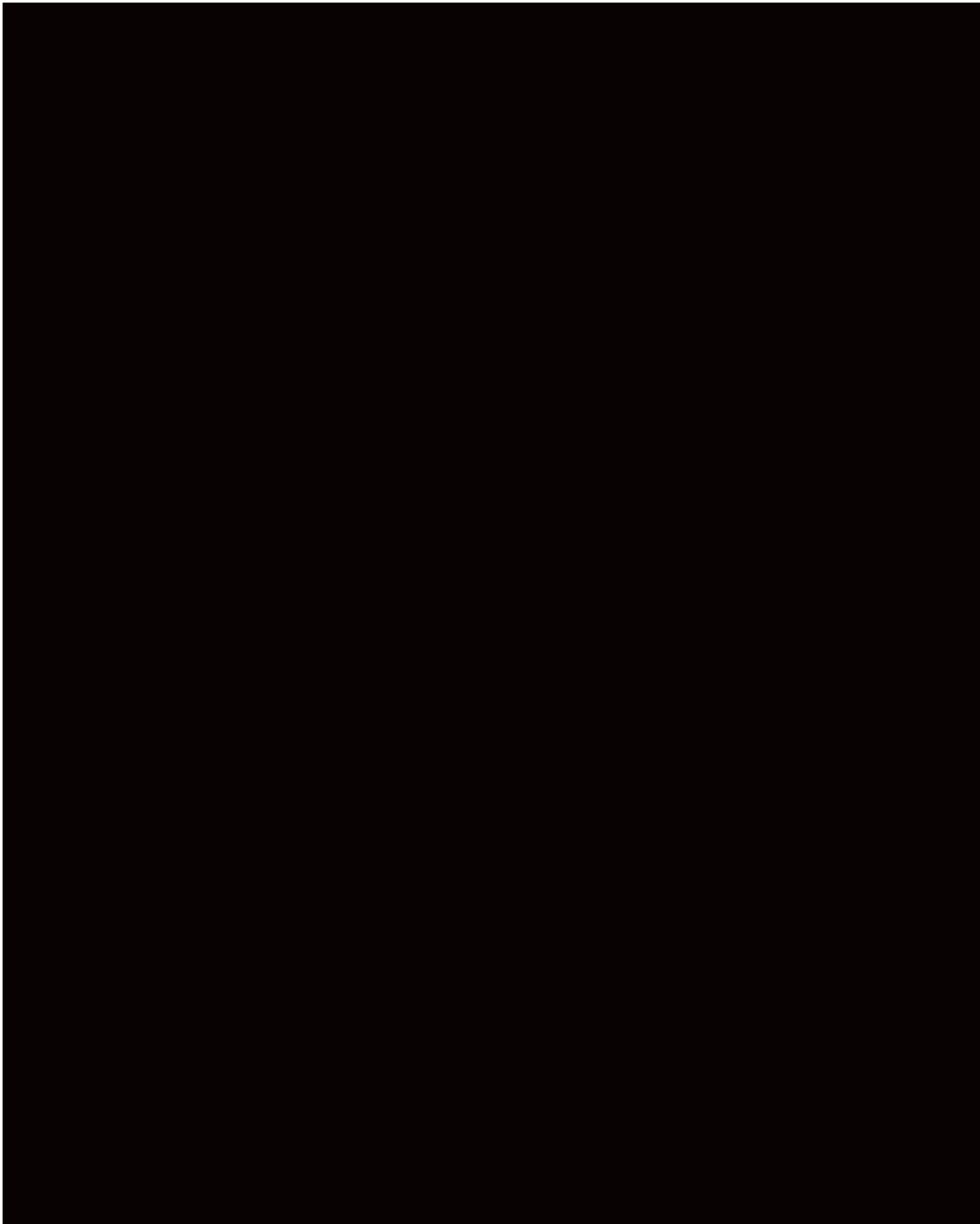


joyful

WHAT'S FRESH

FINISH OPTIONS	Silver leaf with shades of either white fabric or black fabric with inner metallic silver lining. Gold leaf with shades of either champagne fabric or black fabric with inner metallic gold lining.
LIGHT SOURCE	Incandescent/LED Compatible.
NUMBER OF PIECES	4 Chandeliers, 8 Pendants, 5 Sconces, 5 Table Lamps.
DESIGNER	Fine Art Handcrafted Lighting, Made in America.

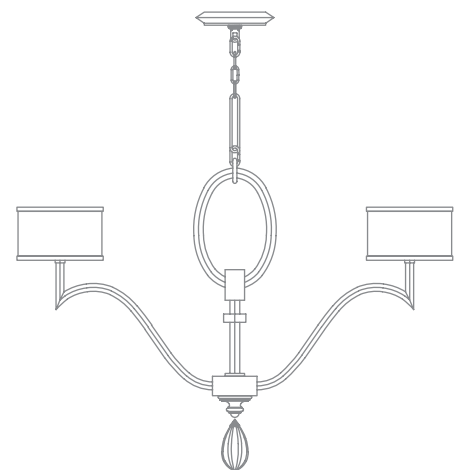
-
- An allegretto, by definition, is a rather fast music tempo that is light and cheerful, and the refresh of this collection makes it just that, light and cheerful!
 - If you look closely, you will see the influence of flow and rhythmic patterns throughout the collection, almost replicating sheet music. The collection is a bit whimsical and playful but, balanced with mature sophistication.
 - You will also find exact design influence and inspiration in the fixtures from the curves of a piano, a harp, guitar strings and even sheet music.
 - These curvatures and shape take an “average” lighting silhouette and turns it into something “above average”. These angles, cuts and curves add an extra step in manufacturing that can only be executed by uncompromised hand metal working and crafting.
 - This collection “steps to a new beat” with fresh new gold and silver finishes and contemporary white, champagne, black/gold and black/silver shade options and adorns design spaces where only the happiest memories are made.
 - It is important to note the detail of this collection’s shade work, features doughnut drums with open centers, hiding all light sources. This feature is a key to a look of excellence and elite style in lighting design.





silver leaf

780440-4 PENDANT
H. 52" (132 cm) W. 28" (71 cm)
Weight: 36 lbs. (16 kg.)

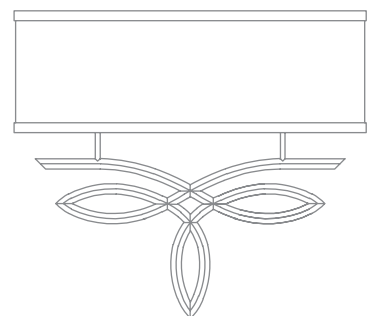


All existing Allegretto product is now available in "fresh" silver leaf or gold leaf finishes.



gold leaf

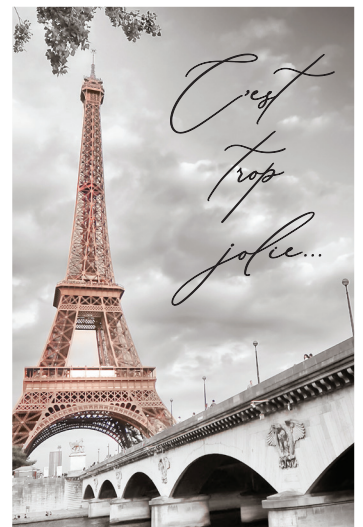
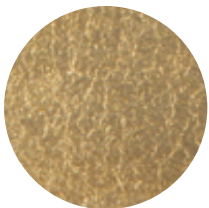
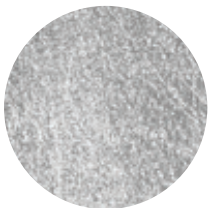
785650-34 SCONCE (ADA Compliant)
H. 15" (38 cm) **W.** 18" (46 cm) **D.** 4" (10 cm)
Weight: 7.5 lbs. (3 kg.)





fresh
**BEVELED
ARCS**

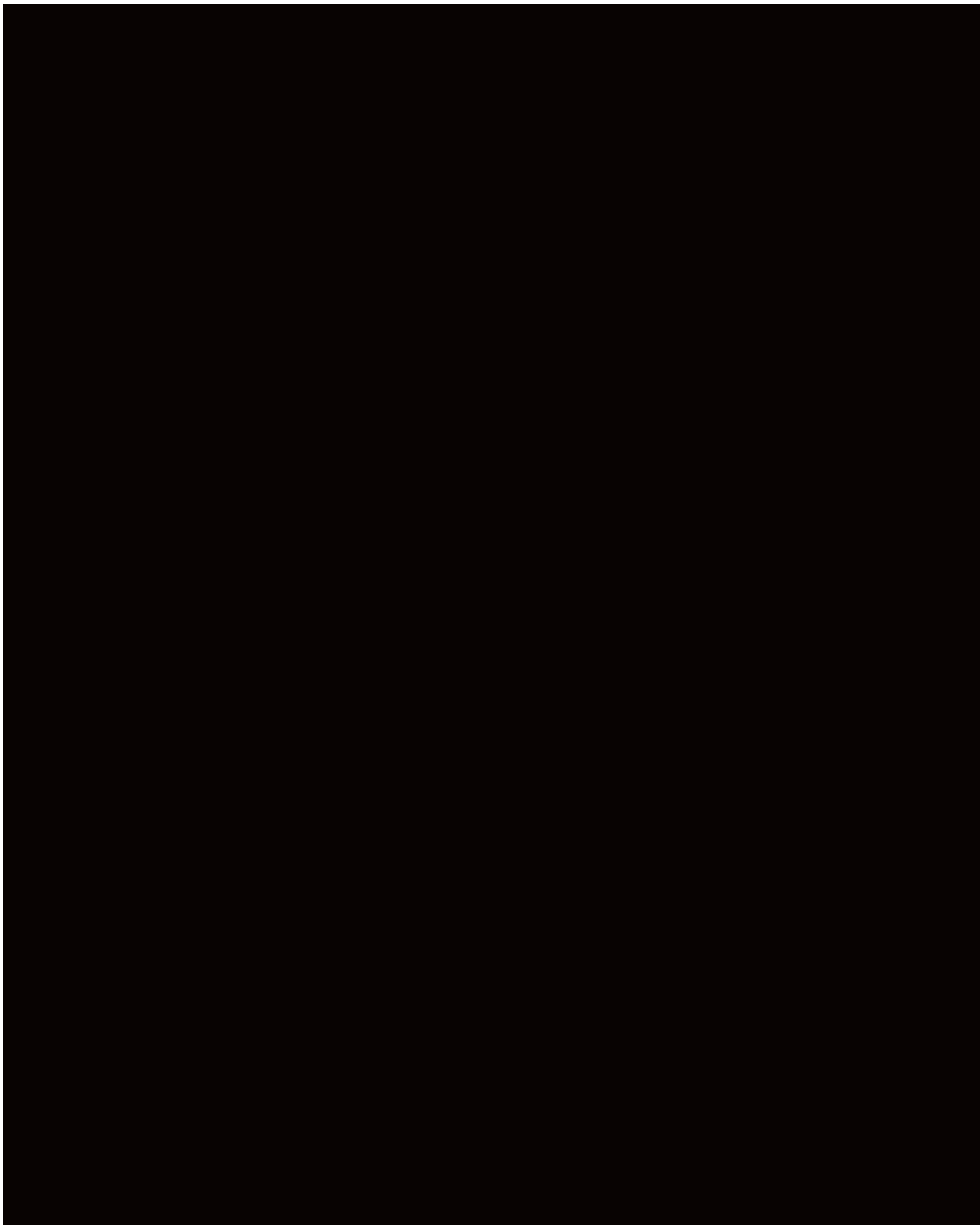
Ooh là là!



WHAT'S FRESH

FINISH OPTIONS	Silver leaf or gold leaf with coordinating candlesticks.
LIGHT SOURCE	Incandescent/LED Compatible.
LEAD TIME	Standard Lead Time.
NUMBER OF PIECES	12 Chandeliers, 4 Pendants, 2 Flush Mounts, 9 Sconces, 1 Floor Lamp, 4 Table Lamps.
DESIGNER	Fine Art Handcrafted Lighting, Made in America.

-
- Let this chic and timeless collection take you on a memorable stroll through Paris, appreciating the arcs of all things French, with its latest touch of silver and gold leaf finishing!
 - You can see the inspirations of Beveled Arcs in so many forms, whether it be on the runways of Fashion Week, the awe of the Eiffel Tower or the clinking of glasses celebrating a joyous occasion. Beveled Arcs aligns itself with all things sophisticated, celebrated, and classic, which is why we have nicknamed this collection the “Coco Chanel” of lighting!
 - The collection is unique in that it is created by using different arcs of hand cut beveled crystal to extend the curve and movement of the design.
 - Innovative to modern day chandeliers, this patented collection uses crystal to accentuate the armature shape, (where most chandeliers utilize beaded or dropped crystals to decorate its armatures) and define its shape, making a bold statement in chandelier design.
 - This collection is truly one-of-a-kind.
 - Arcs and specifically arches have defined architecture for thousands of years, softening the strongest structures utilizing arcs and curves. This same detailing is the allure of Beveled Arcs.
 - Beveled Arcs defines a space by combining simplicity and soft comfort with a bold statement of elegance and strength. It carries an heir of confidence, just as a star does when she enters a room.
 - We have enhanced this collection with our gold and silver leaf, taking this classic work of art and blending it with a contemporary flare.





silver leaf



700840-4 CHANDELIER

H. 42" (107 cm) W. 74" (188 cm) D. 26" (66 cm)

Weight: 31 lbs. (14 kg)

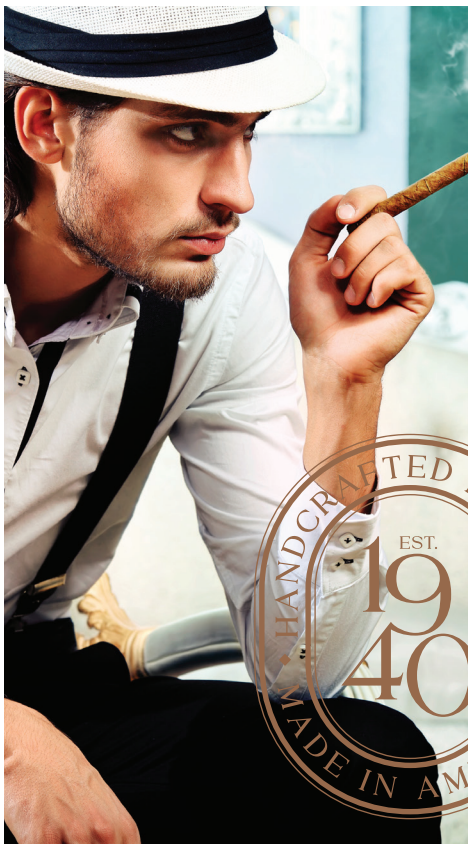
All existing Beveled Arcs product is now available in "fresh" silver leaf or gold leaf finishes.



gold leaf

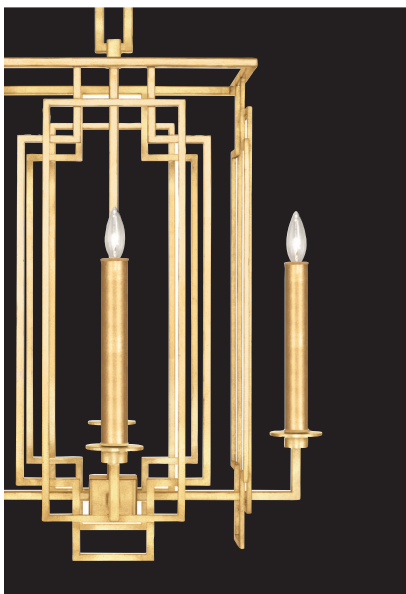


704540-3 PENDANT
H. 40" (102 cm) W. 32" (81 cm)
Weight: 52 lbs. (24 kg.)

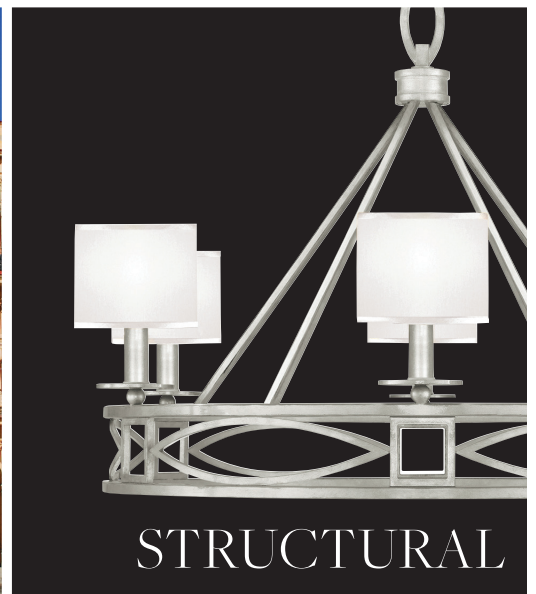


fresh
CIENFUEGOS

My heart is in Havana.



CALM



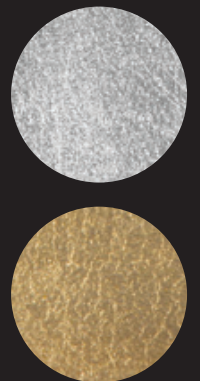
STRUCTURAL



BOLD



CALIENTE



WHAT'S FRESH

FINISH OPTIONS	Silver leaf or gold leaf with coordinating candlesticks and with or without crisp white fabric shades.
LIGHT SOURCE	Incandescent/LED Compatible.
NUMBER OF PIECES	8 Chandeliers, 4 Sconces
DESIGNER	Fine Art Handcrafted Lighting, Made in America.



- While handcrafted here in Miami, our heart was not too far from Cuba when designing this collection! Named after the beach-side Cuban town of Cienfuegos, this collection is open and airy, while giving homage to modern urbanism of the Spanish and French architectural design of this town. Cienfuegos is translated in English to mean 100 fires...maybe that is why it is such a HOT collection!
- The town of Cienfuegos boasts eclectic design where geometric regularity is important to its features, just as this collection.
- From the geometric lines of classic cars and Cuban cafeteras that Cuba is known for, to the simple beach life of the locals, this collection transitions to any aesthetic. The details in these fixtures are as thorough as a well rolled Cuban cigar. You can appreciate the hand welded cuts and angles to create perfect geometric symmetry in every piece.
- This collection is bold and strong, with replication and patterns of circles, squares, rectangles, and rhombus shapes.
- The replication and overlay of these shapes are what creates an architectural appeal to the collection.
- By leafing these fixtures in gold or silver and extending the leafing to the candle covers, luxurious refinement bleeds through any room setting.
- Masterful metal work adorns Cuba and you will see this brought to life in our Cienfuegos collection, focusing on a new idea of modernity with this refresh!
- You must note that lighting on these chandeliers lives on the perimeter of the body, not from an obstructive light cluster in the center.

Havana

in

is

near

by

the

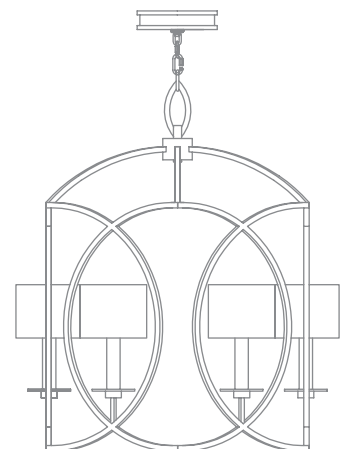
heart

of



silver leaf

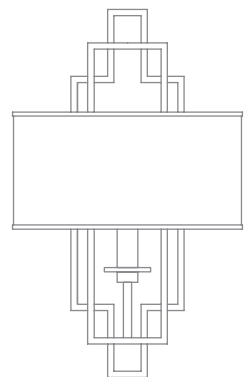
887640-SF31 CHANDELIER
H. 29.5" (75 cm) W. 39.5" (100 cm)
Weight: 32 lbs. (15 kg.)



All existing Cienfuegos product is now available in "fresh" silver leaf or gold leaf finishes.



gold leaf



887740-SF4 PENDANT

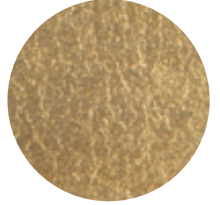
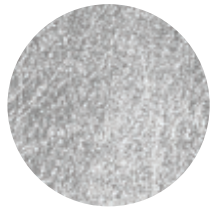
H. 33" (84 cm) W. 19.5" (50 cm) D. 19.5" (50 cm)

Weight: 21 lbs. (10 kg.)

To view entire collection visit finearthl.com/cienfuegos

fresh CRYSTAL LAUREL

A goddess of inspired beauty.



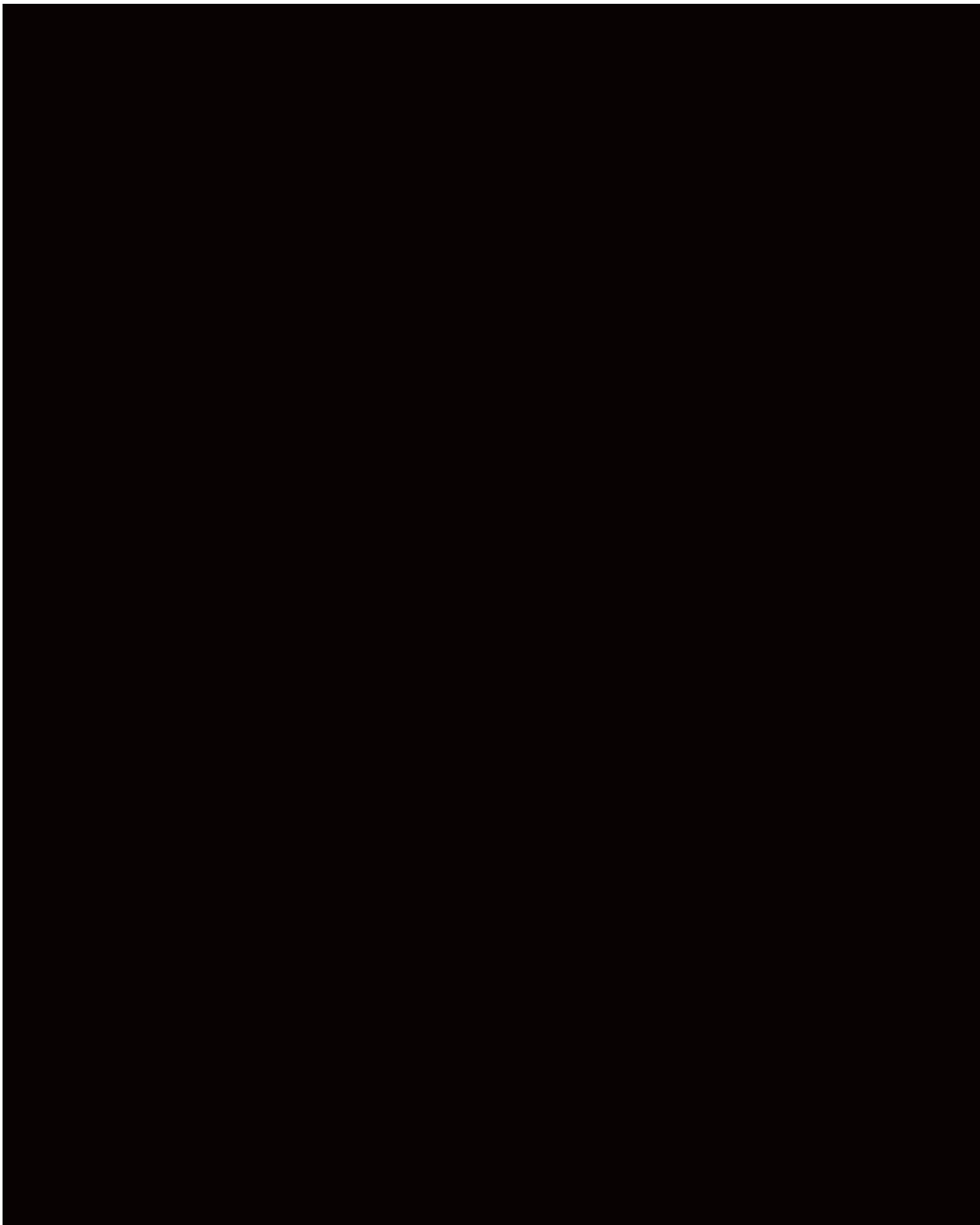
WHAT'S FRESH

FINISH OPTIONS	Silver leaf with shades of either white fabric or black fabric with inner metallic silver lining. Gold leaf with shades of either champagne fabric or black fabric with inner metallic gold lining.
LIGHT SOURCE	Incandescent/LED Compatible.
NUMBER OF PIECES	5 Chandeliers, 4 Pendants, 1 Flush Mount, 5 Sconces, 2 Table Lamps, 1 Console Lamp.
DESIGNER	Fine Art Handcrafted Lighting, Made in America.



- Greece, a true destination to explore history, architecture, and nature, where statues and views transcend a magical allure. If you have not been, you most likely want to and if you have, you are ready to return!
- In Athens, Classical Greek architecture is recognized by formalized bands, fluted columns, and ornate motifs, which you will see translated into to our Crystal Laurel collection. However, we did not stop our design journey in classical Athens! By refreshing this collection with silver and gold leaf, it also takes us to the Greek Islands, where we explore Santorini and life becomes more relaxed. Potted flower sconces adorn blue and white walls down tiny streets overlooking the Mediterranean.
- Flowering vines, wildflowers, as well as the laurel leaf are native to the Mediterranean. The laurel leaf carries symbolic meanings of victory, success, and prosperity, which is the name sake of our ornate, but airy collection.
- The collection is composed of cut crystal leaf forms that are hand wired to each individual stem, creating a laurel leaf motif that adorns these fixtures, adding organic beauty to any space.
- This collection celebrates Greek heritage in many forms, from the laurel wreath headdress of a Greek god to the shapes of traditional Greek pottery.
- Our Crystal Laurel collection, in the new silver and gold leaf finish, will create a look of opulence in any design space.

goodness of inspired beauty





Silver Leaf

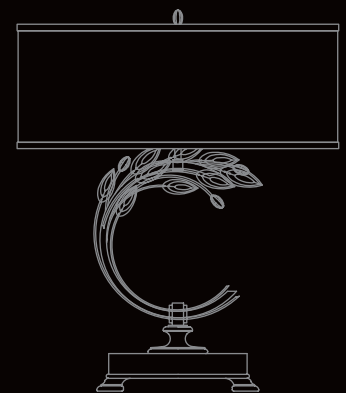


753840-SF4 PENDANT
H. 43" (109 cm) W. 18" (46 cm)
Weight: 35 lbs. (16 kg)

All existing Crystal Laurel product is now available in "fresh" silver leaf or gold leaf finishes.



gold leaf



758610-SF34 LEFT SIDE FACING TABLE LAMP

H. 31" (79 cm)

Weight: 17 lbs. (8 kg.)

Features black fabric shade with metallic gold inner-lining with matching gold leaf metal trim.



FINE ART

HANDCRAFTED LIGHTING

CUSTOMER SERVICE customerservice@finearthl.com **SALES** sales@finearthl.com

SHOWROOMS DALLAS, HIGH POINT, MIAMI, MOSCOW 3840 WEST 104TH STREET, STE. 20, HIALEAH, FL 33018 **T** 305.821.3850 **FINEARTHL.COM**

2020 Fine Art Lamps® All Rights Reserved. Copyrights and Intellectual Property Statement: There is only one Fine Art Lamps producing authentic product. There are many who attempt to emulate or copy our proprietary designs to benefit from the company's heritage, reputation and prestige. When specifying lighting by Fine Art Lamps, the professional is assured of its authenticity and exclusivity. Fine Art Lamps vigorously defends its patents and copyrights in the United States and internationally to protect our clients from counterfeit product and inferior quality copies.