



**GUARANTEED TO
KEEP YOU COOL.**

HINKLEY

FAN SUPPLEMENT 2020

HINKLEY

THIS CATALOG INCLUDES ALL NEW FANS AND ACCESSORIES.
FOR A COMPLETE PRODUCT OFFERING, VISIT [HINKLEY.COM](https://www.hinkley.com).

HINKLEY, INC. | 2020



We're proud to be a 4th generation family company, and love what we do.
We've been around for nearly 100 years, creating thoughtful designs with
the same quality and style we put in our own homes.

Creativity is at our core, and one of the biggest lessons our dad taught us
was to keep looking forward. Hinkley continues to evolve, with lighting and
ceiling fans inspired by our family's commitment to make your life happier.
We can't wait to share our newest designs with you throughout these pages
and at [Hinkley.com](https://www.hinkley.com).

Cheers,

Jess + Eric


Jess & Eric Wiedemer

FANS	
72" INDY	6
44" TREY	8
44" VENTUS	10
REGENCY SERIES FANS	
52" OASIS	12
60" OASIS	14


ICONS + FINISH REFERENCES

Throughout this catalog we have utilized a variety of important icons and finish codes to assist you with your selections. Below is a key describing each of these icons in detail as well as a list of our product finishes with abbreviated codes for easy reference.


ICON DESCRIPTIONS

- 


DC MOTOR
- DC MOTOR**

Fan comes equipped with a DC motor which uses up to 70% less energy than an AC motor and runs cooler and quieter for a longer life.
- 


LED
- LED**

Fan supplied with fully integrated LEDs and drivers or specifically matched LED lamps based on performance and application.
- 


T24
- TITLE 24**

Meets California Energy Commission Title regulations.
- 

UL LISTED
- UL LISTED**

Fan has been tested by Underwriters Laboratories and found in compliance with accepted national safety standards.
- 

WET
- WET RATED**

Suitable for use in wet (interior direct splash and outdoor direct rain or sprinkler) locations as defined by NEC and CEC. Meets United States UL Underwriters Laboratories & CSA Canadian Standards Association Product Safety Standards.
- 

WiFi
- WiFi**

Fan is WiFi compatible with the purchase of optional controls.

FINISH CODES + NAMES

FAW	APPLIANCE WHITE	FMB	MATTE BLACK
FBN	BRUSHED NICKEL	FMM	METALLIC MATTE BRONZE
FCW	CHALK WHITE	FMW	MATTE WHITE
FGT	GRAPHITE	FPW	PEWTER

HINKLEY FANS



72" INDY
Pages 6-7
Brushed Nickel, Matte Black,
Matte White, Metallic Matte Bronze



44" TREY
Pages 8-9
Brushed Nickel, Matte White,
Metallic Matte Bronze



44" VENTUS
Pages 10-11
Matte White, Metallic Matte Bronze,
Pewter



REGENCY SERIES



52" OASIS
Pages 12-13
Appliance White, Brushed Nickel,
Graphite, Chalk White, Matte Black,
Metallic Matte Bronze



60" OASIS
Pages 14-15
Brushed Nickel, Graphite,
Chalk White, Matte Black,
Metallic Matte Bronze



YOUR SPACE JUST GOT SMARTER

WHY A WIFI ENABLED FAN IS THE WAY TO GO



Adding WiFi controls connect Hinkley fans to a home's digital hub.



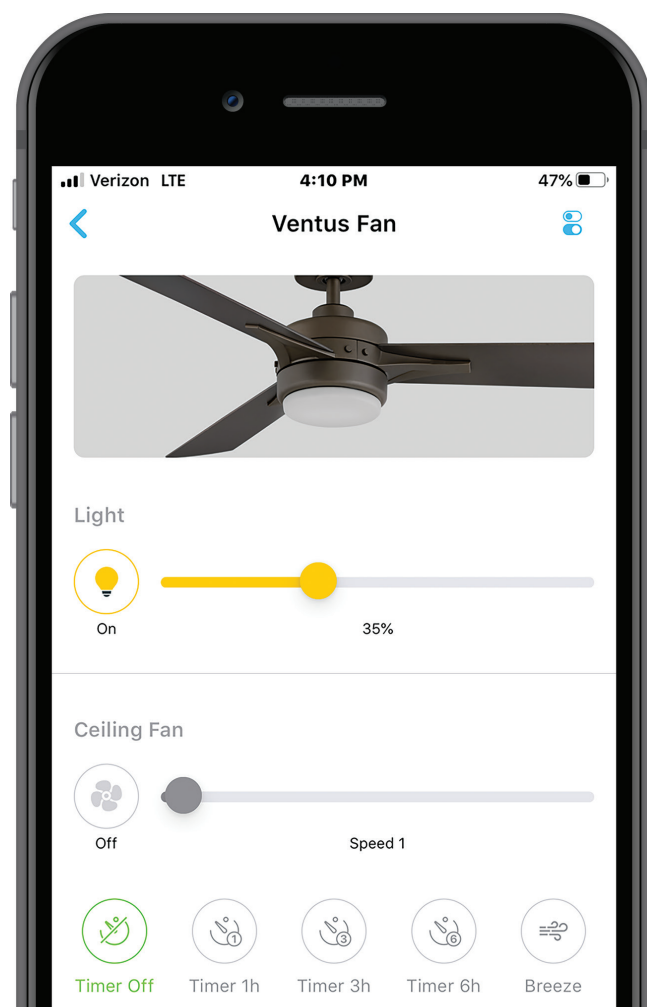
Voice activation is a must for hands-free ease of use.



Speed, light and seasonal modes are just a tap away. From anywhere, anytime.



Make life seamless by setting schedules and preferences.



Add a WiFi optional control to any Hinkley fan to make it a smart fan. Refer to "Optional Controls" on each product page for compatible WiFi controls.

SETUP IN 5 SIMPLE STEPS



DOWNLOAD THE BOND APP

Once you've downloaded the app, login or create an account.



ADD YOUR HINKLEY FAN

Tap the "+" button to add a device. Select "Smart by Bond" option. Connect to "Bond Config" WiFi network. Test your ceiling fan.



SET CONTROLS & PREFERENCES

At this time you can set a location and name. These settings can be easily changed later under Device Settings.



CONNECT TO HOME WIFI

A list of WiFi networks will appear in the Smart by Bond app. Connect to your WiFi network.



DONE!

You're all set! You can now turn your fan on and off, adjust speed, light brightness, set timers and configure summer and winter modes. All of these features are compatible with smart home device voice controls.

SMART HOME COMPATIBLE

Smart by Bond is compatible with Amazon Alexa, Google Assistant, Smart Things, Control 4, Hubitat, Homebridge, ELAN, and RTI to seamlessly integrate Hinkley fans into your connected home.

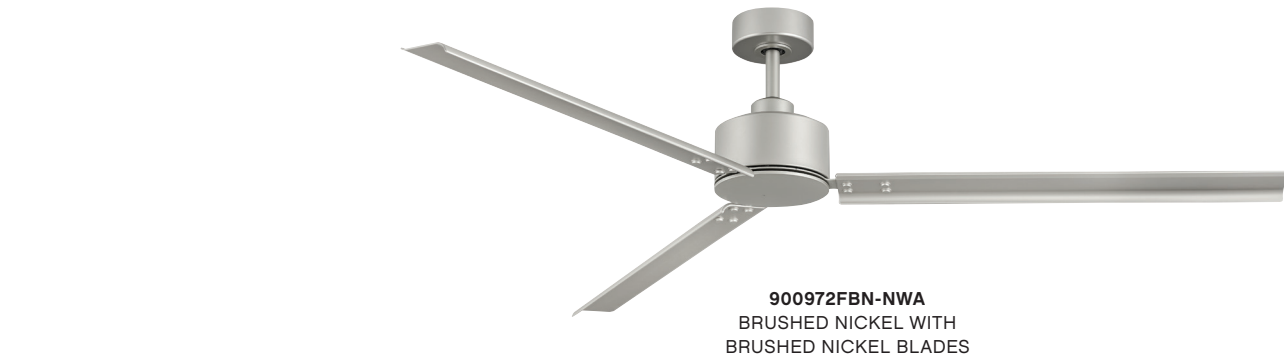
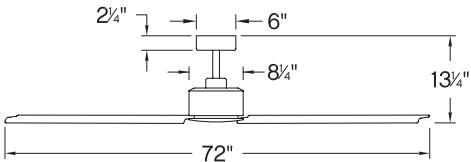


SMART BY BOND CUSTOMER SUPPORT

Smart by Bond has friendly agents standing by at least 12 hours per day to support you in live chat. If they do miss you, they will get back to you by email. For more information visit bondhome.io.

72" INDY™

The raw, edgy style of Indy is the perfect complement for all modern industrial design-inspired rooms. Available in Brushed Nickel, Matte Black, Matte White or Metallic Matte Bronze finish options, Indy features sleek composite blades. Indy is so versatile; it can be used for both indoor and outdoor spaces. Blades are included with every fan.



- 72" INDY™**
- 900972FBN-NWA - BRUSHED NICKEL
 - 900972FMB-NWA - MATTE BLACK
 - 900972FMW-NWA - MATTE WHITE
 - 900972FMM-NWA - METALLIC MATTE BRONZE

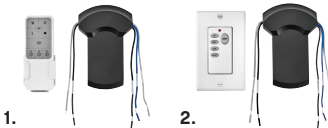
- BLADES:**
- 3 Composite Blades Included
 - 55° Blade Pitch
 - 72" Blade Sweep
- MOUNTING:**
- 6" Downrod Included
 - 76" Lead Wire
 - 23.72lbs. Hanging Weight
 - Mounts to Sloped Ceilings
 - Up to 20° Pitch

Slope ceiling kit required for ceiling pitch greater than 18°, 992001FXX, refer to hinkley.com.

- INCLUDED CONTROLS:**
- 980011FWH
 - Wall Control 4 Speed Slide
 - Manual Reverse



- OPTIONAL CONTROLS:**
- 980004FWH-0097
 - Wifi Remote Control Indy 72"
 - 980017FWH-0097
 - WiFi Wall Control Indy 72"



WiFi compatible with optional controls.

PERFORMANCE SPECIFICATIONS	STANDARD	
	HIGH SPEED	AVERAGE
AIRFLOW (CFM)	6425	4465
ENERGY USE (WATTS)	62.6	39
AIRFLOW EFFICIENCY (CFM/W)	103	115
ENERGY COSTS (YEARLY)	\$18.00	\$11.00
AMPS	0.52	0.37
RPMS	83	71

OPTIONAL ACCESSORIES:

For accessories and specifications, refer to hinkley.com.

44" TREY™

Trey features a sleek flush mount design that packs a powerful punch. Its transitional style comes equipped with robust blades that seamlessly pair performance and precision. Trey is offered in versatile Brushed Nickel, Metallic Matte Bronze and Matte White finish options, and its integrated LED lighting and DC motor technology deliver excellent energy efficiency. A timeless etched opal light kit completes the look for a refined appearance. Trey is so versatile; it can be used for both indoor and outdoor spaces. Blades are included with every fan.



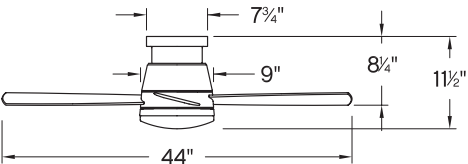
902744FBN-LWD
BRUSHED NICKEL WITH
SILVER BLADES



902744FMW-LWD
MATTE WHITE WITH
MATTE WHITE BLADES



902744FMM-LWD
METALLIC MATTE BRONZE WITH
METALLIC MATTE BRONZE BLADES



DC

LED

WET

UL LISTED

T24

DC MOTOR

LED

WET

LISTED

TITLE 24

44" TREY™

- 902744FBN-LWD - BRUSHED NICKEL
- 902744FMW-LWD - MATTE WHITE
- 902744FMM-LWD - METALLIC MATTE BRONZE

BLADES:

- 3 Composite Blades Included
- 14° Blade Pitch
- 44" Blade Sweep

MOUNTING:

- 8" Lead Wire
- 14.82lbs. Hanging Weight

LAMPING / GLASS:

- 16w Integrated LED
- 1500 Lumens | 90 CRI | 3000K
- Dimmable
- Etched Opal Glass

INCLUDED CONTROLS:

980013FAS
Wall Control 6 Speed DC
Reversing



Trey fans require a single power source for operation.

OPTIONAL CONTROLS:

- 980003FWH
Remote Control 6 Speed DC
- 980015FAS-0274
WiFi Accessory 44" Trey



1. 2. WiFi compatible with optional controls.

OPTIONAL ACCESSORIES:

For additional finishes, accessories and specifications, refer to [hinkley.com](#).



932027FBN
Light Kit Cover

ADDITIONAL SIZES:

Also available in 52" diameter, refer to [hinkley.com](#).

PERFORMANCE SPECIFICATIONS	STANDARD	
	HIGH SPEED	AVERAGE
AIRFLOW (CFM)	4842	2918
ENERGY USE (WATTS)	31.6	19
AIRFLOW EFFICIENCY (CFM/W)	152	154
ENERGY COSTS (YEARLY)	\$9.00	\$5.00
AMPS	0.43	0.24
RPMS	260	153

44" VENTUS™

Ventus is the ultimate transitional style guaranteed to cool and complement any interior space. Unique and reversible blades are constructed to ensure maximum performance, while its stylish Metallic Matte Bronze, Matte White and Pewter finish options deliver a sophisticated appearance. Ventus is equipped with integrated LED lighting technology to deliver excellent energy efficiency. Blades are included with every fan.



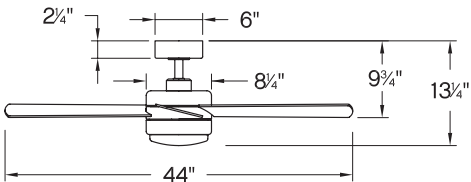
902844FMW-LIA
MATTE WHITE WITH REVERSIBLE
MATTE WHITE / WEATHERED WOOD BLADES



902844FMM-LIA
METALLIC MATTE BRONZE WITH REVERSIBLE
METALLIC MATTE BRONZE / WALNUT BLADES



902844FPW-LIA
PEWTER WITH REVERSIBLE
DRIFTWOOD / TEAK BLADES



44" VENTUS™

902844FMW-LIA - MATTE WHITE

902844FMM-LIA - METALLIC MATTE BRONZE

902844FPW-LIA - PEWTER

BLADES:

- 3 Wood Blades Included
- 14° Blade Pitch
- 44" Blade Sweep

MOUNTING:

- 4.5" Downrod Included
- 76" Lead Wire
- 14.02lbs. Hanging Weight
- Mounts to Sloped Ceilings
- Up to 20° Pitch

Slope ceiling kit required for ceiling pitch greater than 20°, 992001FXX, refer to hinkley.com.

LAMPING:

- 16w Integrated LED
- 1500 Lumens | 90 CRI | 3000K
- Dimmable
- Etched Opal Glass

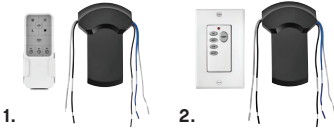
INCLUDED CONTROLS:

980030FWH
Wall Control 3 Speed
Manual Reverse



OPTIONAL CONTROLS:

1. 980004FWH-0284
WiFi Remote Control 44" Ventus
2. 980017FWH-0284
WiFi Wall Control 44" Ventus



WiFi compatible with optional controls.

REVERSIBLE BLADES:

- MATTE WHITE**
Matte White / Weathered Wood
- METALLIC MATTE BRONZE**
Metallic Matte Bronze / Walnut
- PEWTER**
Driftwood / Teak

OPTIONAL ACCESSORIES:

For additional finishes, accessories and specifications, refer to hinkley.com.



932028FMW
Light Kit Cover

ADDITIONAL SIZES:

Also available in 52" diameter, refer to hinkley.com.

PERFORMANCE SPECIFICATIONS	STANDARD	
	HIGH SPEED	AVERAGE
AIRFLOW (CFM)	3604	2732
ENERGY USE (WATTS)	56.7	38
AIRFLOW EFFICIENCY (CFM/W)	64	71
ENERGY COSTS (YEARLY)	\$16.00	\$11.00
AMPS	0.48	0.39
RPMS	196	146

52" OASIS™

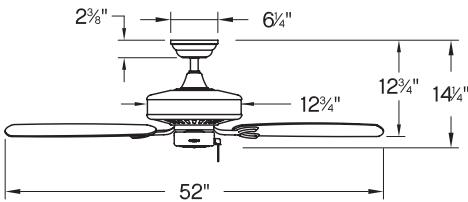
Part of the Regency Series, Oasis offers a simple yet classic all-you-need design. Available in Appliance White, Brushed Nickel, Chalk White, Graphite, Matte Black or Metallic Matte Bronze finish options, Oasis is so versatile; it can be used for both indoor and outdoor spaces. Blades are included with every fan.

DESIGN NOTE

Oasis housing and components are constructed of composite materials to offer maximum durability in harsh climates.



901652FCW-NWA
CHALK WHITE WITH
CHALK WHITE BLADES



901652FBN-NWA
BRUSHED NICKEL WITH
SILVER BLADES



901652FGT-NWA
GRAPHITE WITH
DRIFTWOOD BLADES



901652FMB-NWA
MATTE BLACK WITH
MATTE BLACK BLADES



901652FMM-NWA
METALLIC MATTE BRONZE WITH
METALLIC MATTE BRONZE BLADES



901652FAW-NWA
APPLIANCE WHITE WITH
APPLIANCE WHITE BLADES

REGENCY SERIES

THE REGENCY SERIES OFFERS ALL PURPOSE, AFFORDABLE CEILING FANS THAT CAN ENHANCE A VARIETY OF SPACES.

OPTIONAL ACCESSORIES:

For additional light kits, accessories and specifications, refer to hinkley.com.



930006FBN
Light Kit Low Profile



930003FGT
Light Kit Small Low Profile



910452FDR
Accessory Blades

52" OASIS™

901652FAW-NWA - APPLIANCE WHITE

901652FBN-NWA - BRUSHED NICKEL

901652FCW-NWA - CHALK WHITE

901652FGT-NWA - GRAPHITE

901652FMB-NWA - MATTE BLACK

901652FMM-NWA - METALLIC MATTE BRONZE

BLADES:

- 5 Composite Blades Included
- 16° Blade Pitch
- 52" Blade Sweep

MOUNTING:

- 4.5" Downrod Included
- 76" Lead Wire
- 19.5lbs. Hanging Weight
- Mounts to Sloped Ceilings
- Up to 26° Pitch

Slope ceiling kit required for ceiling pitch greater than 26°, 992001FXX, refer to hinkley.com.

INCLUDED CONTROLS:

Pull Chain
3 Speed Manual Reverse

OPTIONAL CONTROLS:

1. 980004FWH-016
WiFi Remote Control Oasis
2. 980017FWH-016
WiFi Wall Control Oasis



WiFi compatible with optional controls.

PERFORMANCE SPECIFICATIONS	STANDARD	
	HIGH SPEED	AVERAGE
AIRFLOW (CFM)	5455	3867
ENERGY USE (WATTS)	58.8	36
AIRFLOW EFFICIENCY (CFM/W)	93	106
ENERGY COSTS (YEARLY)	\$16.00	\$10.00
AMPS	0.49	0.35
RPMS	161	111

60" OASIS™

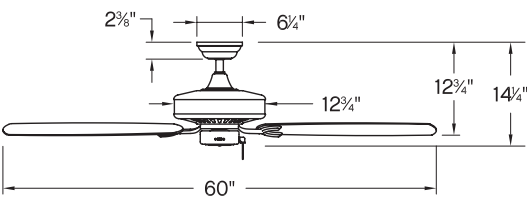
Part of the Regency Series, Oasis offers a simple yet classic all-you-need design. Available in Brushed Nickel, Chalk White, Graphite, Matte Black or Metallic Matte Bronze finish options, Oasis is so versatile; it can be used for both indoor and outdoor spaces. Blades are included with every fan.

DESIGN NOTE

Oasis housing and components are constructed of composite materials to offer maximum durability in harsh climates.



901660FCW-NWA
CHALK WHITE WITH
CHALK WHITE BLADES



901660FBN-NWA
BRUSHED NICKEL WITH
SILVER BLADES



901660FGT-NWA
GRAPHITE WITH
DRIFTWOOD BLADES



901660FMB-NWA
MATTE BLACK WITH
MATTE BLACK BLADES



901660FMM-NWA
METALLIC MATTE BRONZE WITH
METALLIC MATTE BRONZE BLADES

THE REGENCY SERIES OFFERS ALL PURPOSE, AFFORDABLE CEILING FANS THAT CAN ENHANCE A VARIETY OF SPACES.

OPTIONAL ACCESSORIES:

For additional light kits, accessories and specifications, refer to hinkley.com.



930006FBN
Light Kit Low Profile



930003FGT
Light Kit Small Low Profile



910452FDR
Accessory Blades

60" OASIS™

901660FBN-NWA - BRUSHED NICKEL

901660FCW-NWA - CHALK WHITE

901660FGT-NWA - GRAPHITE

901660FMB-NWA - MATTE BLACK

901660FMM-NWA - METALLIC MATTE BRONZE

BLADES:

- 5 Composite Blades Included
- 16° Blade Pitch
- 60" Blade Sweep

MOUNTING:

- 4.5" Downrod Included
- 76" Lead Wire
- 26.06lbs. Hanging Weight
- Mounts to Sloped Ceilings - Up to 26° Pitch

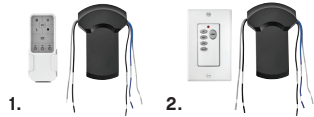
Slope ceiling kit required for ceiling pitch greater than 26°, 992001FXX, refer to hinkley.com.

INCLUDED CONTROLS:

Pull Chain
3 Speed Manual Reverse

OPTIONAL CONTROLS:

1. 980004FWH-0166
WiFi Remote Control Oasis
2. 980017FWH-0166
WiFi Wall Control Oasis



WiFi compatible with optional controls.

PERFORMANCE SPECIFICATIONS	STANDARD	
	HIGH SPEED	AVERAGE
AIRFLOW (CFM)	5876	4038
ENERGY USE (WATTS)	79	48
AIRFLOW EFFICIENCY (CFM/W)	74	84
ENERGY COSTS (YEARLY)	\$22.00	\$13.00
AMPS	0.66	0.46
RPMS	140	96

900972FBN-NWA	7	902744FMW-LWD	9	980015FAS-0274	9
900972FMB-NWA	6	902844FMM-LIA	11	980017FWH-016	13
900972FMM-NWA	7	902844FMW-LIA	10	980017FWH-0097	7
900972FMW-NWA	7	902844FPW-LIA	11	980017FWH-0166	15
901652FBN-NWA	13	910452FDR	13	980017FWH-0284	11
901652FCW-NWA	12		15	980030FWH	10
901652FAW-NWA	13	930003FGT	13		
901652FGT-NWA	13		15		
901652FMB-NWA	13	930006FBN	13		
901652FMM-NWA	13		15		
901660FBN-NWA	15	980003FWH	9		
901660FCW-NWA	14	980004FWH-016	13		
901660FGT-NWA	15	980004FWH-0097	7		
901660FMB-NWA	15	980004FWH-0166	15		
901660FMM-NWA	15	980004FWH-0284	11		
902744FBN-LWD	8	980011FWH	6		
902744FMM-LWD	9	980013FAS	8		

We want you to enjoy
your experience with Hinkley.

There is nothing complicated about it: we want to deliver a great product and treat you the way we'd like to be treated. So whether you are flipping through our catalog, surfing our site, getting inspired through social media, chatting with a member of our team or checking out our products in a retail shop—we want it to be time well-spent. Here's all you need to know:

CATALOG COLLECTIONS
Hinkley catalogs feature our current and complete product line along with important product specs and detailed photography. A must for the print-loving researcher who likes to tab their favorites. Stop by your local showroom for your own copy.

HINKLEY.COM
Dive in! Our easy-to-use site makes your product research process a snap, with the added benefit of tips, trends, installation guidelines and a quick connection to our retail partners.

SOCIAL CLIMBERS
We don't mean to brag, but we are connected.



REAL PEOPLE
Want to chat? Contact us at service@hinkley.com or 1.800.HINKLEY.

Hinkley stands behind the quality of our fixtures with product warranties that are among the strongest in the industry. For details of warranty coverage on specific products, please refer to hinkley.com or consult a qualified Hinkley retail distributor.

Several Hinkley products are protected under U.S. Patent and foreign patent, or patent pending. For current information regarding Hinkley's patent portfolio, please visit hinkley.com.

©2020 Hinkley, Inc. All rights reserved in all copyrightable works.



Hinkley is a proud partner of the American Lighting Association.

HINKLEY

HINKLEY.COM

GLOBAL HEADQUARTERS

33000 Pin Oak Parkway | Avon Lake, Ohio 44012
T 440 653 5500 | F 440 653 5555 | hinkley.com

SHOWROOM

Dallas Trade Mart 3210 | Dallas, Texas 75207



Connect with us | [#hinkleystyle](https://twitter.com/hinkleystyle)

2020 FAN
SUPPLEMENT FANSUP2020

