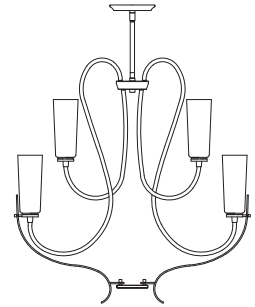
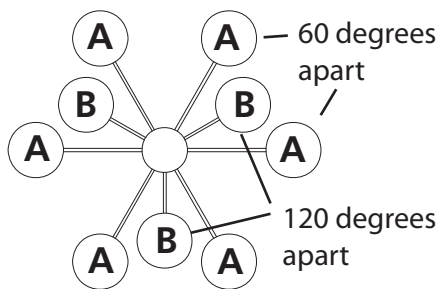


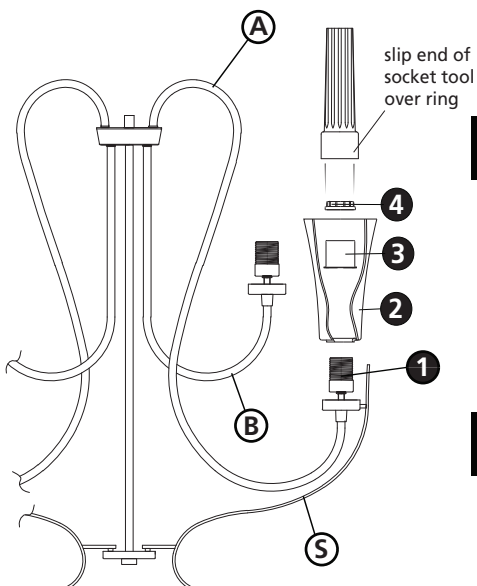
Item No. 4228



Drawing 1 - Arm Spread



Drawing 2 - Glass Installation



## ▼ start here

1

1. Find a clear area in which you can work.
2. Unpack fixture and glass from carton.
3. Carefully review instructions prior to assembly.

**\*\*\* The construction of this fixture will be accomplished by first assembling the main body of the fixture, making all necessary electrical connections, hanging the fixture from the ceiling, and then installing the glass.**

**SAFETY WARNING: READ WIRING AND GROUNDING INSTRUCTIONS (I.S. 18) AND ANY ADDITIONAL DIRECTIONS. TURN POWER SUPPLY OFF DURING INSTALLATION. IF NEW WIRING IS REQUIRED, CONSULT A QUALIFIED ELECTRICIAN OR LOCAL AUTHORITIES FOR CODE REQUIREMENTS.**

2

1. To assemble fixture, spread fixture arms (A) apart until they are equally spaced 60 degrees. - see **Drawing 1**.
2. Spread fixture arms (B) until they are equally spaced 120 degrees apart and equally spaced between the (A) arm below - see **Drawing 1**.
3. It may be necessary to adjust scroll (S) so it is center on the arm after they are moved into position.
4. Please refer to hanging instruction sheet (I.S. 19-92) provided to hang fixture. Then refer back to this sheet to continue assembling this fixture.

3

1. To install glass first unthread socket ring (4) and remove socket spacer (3) from socket (1).
2. Slip glass (2) over socket (1).
3. Slip socket spacer (3) over socket, and thread socket ring (4) onto socket (1) using socket tool provided.
4. Fixture can now be lamped accordingly.

01.01.13