

FLUORESCENT WALL MOUNT FIXTURE ASSEMBLY & INSTALLATION INSTRUCTIONS 10333WH

Please read carefully and save these instructions, as you may need them at a later date.

CAUTION

Turn off the main power at the circuit breaker before installing the fixture, In order to prevent possible shock.

GENERAL

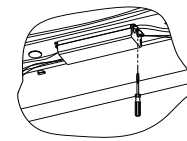
All electrical connections must be in accordance with local and national electrical code(N.E.C) standards. If you are unfamiliar with proper electrical wiring connections obtain the services of a qualified electrician. Remove the fixture and the mounting package from the box and make sure that no parts are missing by referencing the illustrations on the installation instruction.

ASSEMBLY AND INSTALLATION

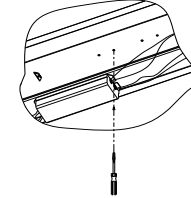
1. Take the Fixture out from the carton
2. Take the Lamps(17) out from the Styrofoam.
3. Secure the Cross Bar(10)to the Outlet Box(1)by using two Mounting Screws(12).
4. Pull the Supply Wires(2&3)and the House Ground Wire(8)out from the Outlet Box(1).
5. Make the wiring connections:connect the White Supply Wire(2)to the White Fixture Wire(4);connect the Black Supply Wire(3)to the Black Fixture Wire(6)by using Wire Connectors(5).Secure the House Ground Wire(8)and Fixture Ground Wire(7)to the Green Screws(11) on the Cross Bar(10).
6. Carefully tuck all wires back into the Outlet Box(1).Put the Fixture Pan(15)through the Outward Screw(9)and then secure the Fixture Pan(15) by tightening the Hexgon Nut(19).
7. Now you are ready to install the Lamp. Do not exceed recommended

Maximum wattage.

8. The Acrylic Lens is secured with a Bracket(21).Put the Bracket(21) on the hook of the Small Bracket(18),and then secure it by the Copper Screw (13).
9. Ballasts in the fixture is accessible and removable by an electrician without cutting of wires and without damage to the housing, trim, decorative elements or the carpentry to which the fixture is attached

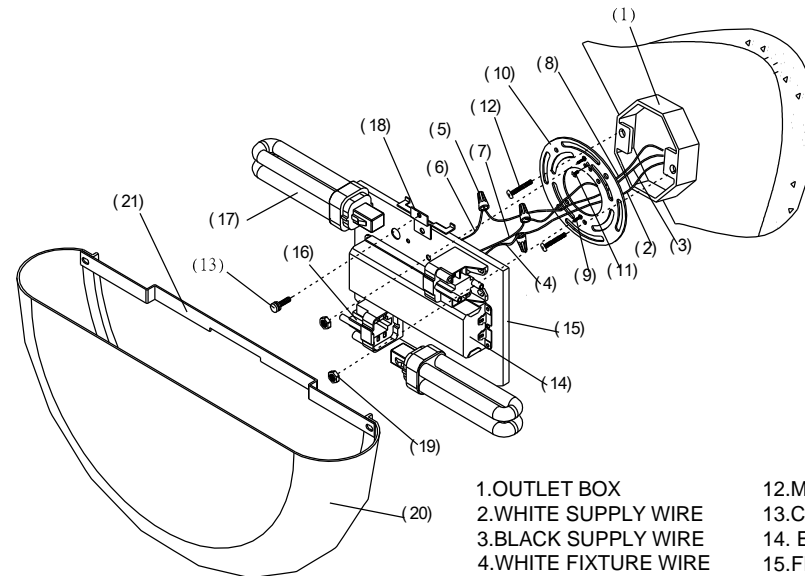


Use screw driver to loosen the ballast screw and take it out of fixture pan.



Insert the Ballast to the triangle hole and then secure it by the screw on the other end.

INSTALLATION IS NOW COMPLETED



- | | |
|-----------------------|------------------------|
| 1.OUTLET BOX | 12.MOUNTING SCREW |
| 2.WHITE SUPPLY WIRE | 13.COPPER SCREW |
| 3.BLACK SUPPLY WIRE | 14. ELECTRONIC BALLAST |
| 4.WHITE FIXTURE WIRE | 15.FIXTURE PAN |
| 5.WIRE CONNECTOR | 16.SOCKET |
| 6.BLACK FIXTURE WIRE | 17.QUAD LAMP |
| 7.FIXTURE GROUND WIRE | 18.SMALL BRACKET |
| 8.HOUSE GROUND WIRE | 19.HEXGON NUT |
| 9.OUTWARD SCREW | 20.ACRYLIC LENS |
| 10.CROSS BAR | 21.BRACKET |
| 11.GREEN SCREW | |