

.

L I G H T S U P

Our Story

Lights Up has been designing and producing stylish and functional bespoke lighting in industrial Brooklyn, NY since 1987. Our lighting is designed by founder Rachel Simon, with a focus on quality of light and quality of life.



How its Made

All Lights Up lampshades are made by hand in our factory in Brooklyn, with a selection of over 60 shade material options using traditional equipment and modern techniques. Our highly skilled and experienced craftspeople produce superb modern lighting solutions for everyday use.

Commitment to The Environment

Much of our line is made in the USA; some of it uses imported parts, including 100% recycled PET (plastic bottle) fabric for our exclusive print patterns and responsibly forested wood veneers. Our newest products utilize custom built-in LEDs for tremendous energy savings. From our early use of antique lighting parts, mixed metals, and custom cold water finishes, we have always felt responsible for our shared planet and our precious resources.



Contract, Hospitality, and Home:

We provide elegant and practical lighting solutions for Contract, Hospitality and Residential markets. Please contact us for more information on how we can help you realize your commercial lighting project. We have in-house prototyping and offer a wide variety of styles and options. Lights Up is a certified Woman-Owned Business.





CONTENT

TABLE

FLOOR

SCONCE

FLUSH MOUNTS

PENDANTS

CAGES

SWAG

HARDWARE/PARTS

SHADE MATERIALS

WWW.LIGHTSUPLIGHTING.COM



TABLE

508

Pops Deluxe Table Lamp

HARDWARE/FINISH
Bisque (BQ), Cast Iron Ceramic (CI)

OVERALL HEIGHT, BASE FOOT PRINT
27", 10"

LAMPING
(1) 150W max, 120V, E26 Incandescent;
CFL; LED

ON/OFF
On/Off Socket Switch

SHADE OPTIONS
Classics

ADDITIONAL FEATURES
Oak and Brass Accents



281

Soirée Table Lamp

HARDWARE/FINISH
White Lacquer (WH), Antique
Bronze(AB),
Cast Iron Ceramic (CI)

OVERALL HEIGHT, BASE FOOT PRINT
31", 7.5"

LAMPING
(2) 75W max, 120V, E26 Incandescent;
CFL; LED

ON/OFF
On/Off Pull Chains

SHADE OPTIONS
Classics, Metallics





264

Oscar Table Lamp

HARDWARE/FINISH
Carrot(CA), Grass (GR), Olive (OL)

OVERALL HEIGHT, BASE FOOT PRINT
24", 4.5"

LAMPING
(1)60W max, 120V, E26
Incandescent; CFL; LED

ON/OFF
On/Off Socket Switch

SHADE OPTIONS
LU Classics

424

Can Can Mini Table Lamp

HARDWARE/FINISH
Brushed Nickel (BN)

OVERALL HEIGHT, BASE FOOT PRINT
11", 3.5"

LAMPING
(1) 13W max, 120V, E26 CFL; LED

ON/OFF
On/Off on Base

SHADE OPTIONS
LU Classics, Pleats

ADDITIONAL FEATURES
13W CFL Included



455

Walker Table Lamp

HARDWARE/FINISH
Powder Coated Black (PB),
Brushed Nickel (BN)

OVERALL HEIGHT, BASE FOOT PRINT
26", 6"

LAMPING
(1) 100W max, 120V, E26
Incandescent; CFL; LED

ON/OFF
On/Off Switch on Base

SHADE OPTIONS
LU Classics, Metallics

ADDITIONAL FEATURES
Adjustable Shade

434

Can Can Table Lamp

HARDWARE/FINISH
Brushed Nickel(BN)

OVERALL HEIGHT, BASE FOOT PRINT
Adjustable 21-34, 5.5"

LAMPING
(1) 75W max, 120V, E26
Incandescent; CFL; LED

ON/OFF
Cord Switch

SHADE OPTIONS
LU Classics





425/426/427

**Meridian Table Lamp
Small/Medium/Large**

HARDWARE/FINISH
Brushed Nickel(BN)

OVERALL HEIGHT
11,7" (S)/15,9" (M)
/20,5" (L)

LAMPING
(1) 75W max(S)/100W max(M&L),
120V, E26 Incandescent; CFL; LED

ON/OFF
On/Off Socket Switch

SHADE OPTIONS
LU Classics, Duotrans



501

Circa Table Lamp

HARDWARE/FINISH
Bisque (BQ), Cast Iron Ceramic (CI)

OVERALL HEIGHT, BASE FOOT PRINT
34", 6.5"

LAMPING
(1) 150W max, 120V, E26
Incandescent; CFL; LED

ON/OFF
On/Off Socket Switch

SHADE OPTIONS
LU Classics

600

**Weegee Small Table
Lamp**

HARDWARE/FINISH
Brushed Nickel(BN)

OVERALL HEIGHT, BASE FOOT PRINT
20", 12"

LAMPING
(1) 75W max, 120V, E26
Incandescent; CFL; LED

ON/OFF
On/Off Cord Switch

SHADE OPTIONS
LU Classics, Metallics



502

Lizzy Table Lamp

HARDWARE/FINISH
Bisque (BQ), Cast Iron Ceramic (CI)

OVERALL HEIGHT, BASE FOOT PRINT
22", 5"

LAMPING
(2) 150W max, 120V, E26
Incandescent; CFL; LED

ON/OFF
(2) Pull Chains

SHADE OPTIONS
LU Classics, Metallics





690

Blip Shorty Table Lamp

HARDWARE/FINISH
Brass and White Lacquer (BW)

OVERALL HEIGHT, BASE FOOT PRINT
27", 10"

LAMPING
(1) 60W max, 120V, E26
Incandescent; CFL; LED

ON/OFF
On/Off Pull Chains

SHADE OPTIONS
LU Classics, Metallics

ADDITIONAL FEATURES;
Oval Shade

270

Devo Round Table Lamp

HARDWARE/FINISH
Olive(OL), Soy(SO), Grass(GR),
Copper(CP), Gold(GD) &
White Lacquer(WH)

OVERALL HEIGHT, BASE FOOT PRINT
18", 5"

LAMPING
(1) 60W max, 120V, E26
Incandescent; CFL; LED

ON/OFF
On/Off Line Switch

SHADE OPTIONS
LU Classics



471

Martha Table Lamp

HARDWARE/FINISH
Apple Glass(AG) w/Chrome accents,
Milk Glass(MG) w/ Rose Gold accents

OVERALL HEIGHT, BASE FOOT PRINT
27", 10"

LAMPING
(1) 60W max, 120V, E26
Incandescent; CFL; LED

ON/OFF
On/Off Cord Switch

SHADE OPTIONS
LU Classics, Metallics

ADDITIONAL FEATURES;
Glass Base



491

Rex Tall Table Lamp

HARDWARE/FINISH
Brushed Nickel (BN)

OVERALL HEIGHT, BASE FOOT PRINT
21", 8 x 16"

LAMPING
(1) 100W max, 120V, E26
Incandescent; CFL; LED

ON/OFF
On/Off Cord Switch

SHADE OPTIONS
LU Classics





FLOOR

921

Zoe One -Light Floor Lamp

HARDWARE/FINISH
Antique Iron (AI)

OVERALL HEIGHT, BASE FOOT PRINT
60", 9"

LAMPING
(1) 75W max, 120V, E26
Incandescent: CFL; LED

ON/OFF
Floor Dimmer

SHADE OPTIONS
LU Classics

ADDITIONAL FEATURES
Adjustable Shade; Patterned Cast
Iron Base



981

Soirée Floor Lamp

HARDWARE/FINISH
Antique Bronze (AB), Gold (GD) &
White Lacquer (WH)

OVERALL HEIGHT, BASE FOOT PRINT
60", 10.75"

LAMPING
(2) 100W max, 120V, E26
Incandescent: CFL; LED

ON/OFF
(2) On/Off Pull Chains

SHADE OPTIONS
LU Classics, Metallics





767

Meridian Floor Lamp

HARDWARE/FINISH
Brushed Nickel (BN)

OVERALL HEIGHT, BASE FOOT PRINT
59", 10"

LAMPING
(3) 100W max, 120V, E26
Incandescent: CFL; LED

ON/OFF
On/Off Floor Switch

SHADE OPTIONS
LU Classics, Duotrans

990

Blip Floor Lamp

HARDWARE/FINISH
Brass and White Lacquer (BW)

OVERALL HEIGHT, BASE FOOT PRINT
63", 12" Diameter

LAMPING
(2) 60W max, 120V, E26
Incandescent: CFL; LED

ON/OFF
On/Off Pull Chains

SHADE OPTIONS
LU Classics, Metallics



930

Walker Floor Chandelier

HARDWARE/FINISH
Brushed Nickel (BN)

OVERALL HEIGHT, BASE FOOT PRINT
68, 11-1/2"

LAMPING
(3) 60W max, 120V, E26
Incandescent: CFL; LED

ON/OFF
On/Off Foot Switch

SHADE OPTIONS
LU Classics, Organza, Duotrans,
Optical

763

Can Can Floor Lamp

HARDWARE/FINISH
Brushed Nickel (BN)

OVERALL HEIGHT, BASE FOOT PRINT
Adjustable 52-70", 10"

LAMPING
(1) 150W max,

ON/OFF
3-Way Socket Switch

SHADE OPTIONS
LU Classics





703

Weegee Floor Lamp

HARDWARE/FINISH
Brushed Nickel (BN)

OVERALL HEIGHT, BASE FOOT PRINT
62", 24"

LAMPING
(1) 50W max, 120V, E26
Incandescent; CFL; LED

ON/OFF
On/Off Foot Switch

SHADE OPTIONS
LU Classics, Metallics

930 XXX

Walker Floor Chandelier

HARDWARE/FINISH
Brushed Nickel (BN)

OVERALL HEIGHT, BASE FOOT PRINT
68, 11-1/2"

LAMPING
(3) 60W max, 120V, E26
Incandescent; CFL; LED

ON/OFF
On/Off Foot Switch

SHADE OPTIONS
No Shade



710

Flex Floor Lamp

HARDWARE/FINISH
Polished Nickel (PN)

OVERALL HEIGHT, BASE FOOT PRINT
66.5" (Max), 9"

LAMPING
(1) 4.5W Integrated LED

ON/OFF
On/Off Foot Switch

SHADE OPTIONS
LU Classics, Woods, Duotrans

ADDITIONAL FEATURES
Flexible Goose neck





4055

Walker Swing-arm Sconce

HARDWARE/FINISH
Black Powder Coat (PB)

OVERALL HEIGHT, BASE FOOT PRINT
6", 5 x 8"

LAMPING
(1) 60W max, 120V, E26
Incandescent; CFL; LED

ON/OFF
Wired for Permanent Mounting;
Dimmer Switch on Backplate

SHADE OPTIONS
LU Classics, Metallics

ADDITIONAL FEATURES
12" Swing-arm, Dimmer



4095

Guppy Sconce

HARDWARE/FINISH
Brushed Nickel (BN)

OVERALL HEIGHT, BASE FOOT PRINT
8" (Max), 4.25"

LAMPING
(1) 4.5W Integrated LED

ON/OFF
On/Off Switch on Backplate

SHADE OPTIONS
LU Classics, Woods, Duotrans

ADDITIONAL FEATURES
Adjustable Shade



SCONCE



4036

Meridian Lg. Sconce

HARDWARE/FINISH
Brushed Nickel (BN)

OVERALL HEIGHT, BASE FOOT PRINT
10" x 14", 4" depth

LAMPING
(2) 60W max, 120V, E26
Incandescent; CFL; LED

ON/OFF
Wired for Permanent Mounting

SHADE OPTIONS
LU Classics, Duotrans

ADDITIONAL FEATURES
ADA Compliant

4011

Coopster 1-Light Sconce

HARDWARE/FINISH
Brushed Nickel (BN)

OVERALL HEIGHT, BASE FOOT PRINT
13" H, 5-1/2" H x 4-1/2" W,
5.5" x 4.5" Back plate

LAMPING
(1) 60W max, 120V, E26
Incandescent; CFL; LED

ON/OFF
Wired for Permanent Mounting

SHADE OPTIONS
LU Classics

ADDITIONAL FEATURES
Reversible; arm is fixed



4090

Blip Sconce

HARDWARE/FINISH
Brass and White Lacquer (BW)

OVERALL HEIGHT, BASE FOOT PRINT
20", 5" Diameter Back plate

LAMPING
(2) 60W max, 120V, E26
Incandescent; CFL; LED

ON/OFF
On/Off Pull Chains

SHADE OPTIONS
LU Classics, Metallics

4013

Coopster 3-Light Sconce

HARDWARE/FINISH
Brushed Nickel (BN)

OVERALL HEIGHT, BASE FOOT PRINT
18" H, 5-1/2" H x 4-1/2" W,
5.5" x 4.5" Back plate

LAMPING
(3) 100W max, 120V, E26
Incandescent; CFL; LED

ON/OFF
Wired for Permanent Mounting

SHADE OPTIONS
LU Classics, Metallics

ADDITIONAL FEATURES
Reversible; arms are fixed





010/010 LED
10" Flush Mount

HARDWARE/FINISH
Brushed Nickel (BN), Oil Rubbed
Bronze (OB)

DIMENSIONS
10" x 6"

LAMPING
(2) 60W max, 120V, E26
LED Integrated

INSTALLATION
Mounts to Junction Box

SHADE OPTIONS
LU Classics, Optical, Pleats & Woods

ADDITIONAL FEATURES
Frosted Bottom Diffuser



016/016 ED 020/020 LED

16" Flush Mounts

HARDWARE/FINISH
Brushed Nickel (BN), Oil Rubbed
Bronze (OB)

DIMENSIONS
16" X 6"

LAMPING
(3) 60W max, 120V, E26
LED Integrated

INSTALLATION
Mounts to Junction Box

SHADE OPTIONS
LU Classics, Pleats & Woods

ADDITIONAL FEATURES
Frosted Bottom Diffuser

20" Flush Mounts

HARDWARE/FINISH
Brushed Nickel (BN), Oil Rubbed
Bronze (OB)

DIMENSIONS
20" X 6"

LAMPING
(3) 60W max, 120V, E26
LED Integrated

INSTALLATION
Mounts to Junction Box

SHADE OPTIONS
LU Classics, Pleats & Woods

ADDITIONAL FEATURES
Frosted Bottom Diffuser



024
24" Flush Mounts

HARDWARE/FINISH
Brushed Nickel (BN), Oil Rubbed
Bronze (OB)

DIMENSIONS
24" X 6"

LAMPING
(3) 60W max, 120V, E26
LED Integrated

INSTALLATION
Mounts to Junction Box

SHADE OPTIONS
LU Classics, Deluxe Solids

ADDITIONAL FEATURES
Frosted Bottom Diffuser



FLUSH MOUNTS



9444

Woody Pendent

HARDWARE/FINISH
Brushed Nickel (BN),

DIMENSIONS
24 x 24 x 13"

LAMPING
(2) 100W max, 120V, E26
Incandescent; CFL; LED

INSTALLATION
Hardwire 5" Canopy, 8' Black or
White Cord

SHADE OPTIONS
LU Classics & Woods Veneers

ADDITIONAL FEATURES
Double Shade, Bottom Fabric Diffuser



9705

Weegee Slim Pendant

HARDWARE/FINISH
Brushed Nickel (BN)

DIMENSIONS
22 x 24 x 8"

LAMPING
(2) 100W max, 120V, E26
Incandescent; CFL; LED

INSTALLATION
Hardwire, 5" Canopy, 8' Black or
White

SHADE OPTIONS
LU Classics & Metallics

ADDITIONAL FEATURES
Halo Bottom Diffuser





9208

Deco Deluxe Pendant

HARDWARE/FINISH
Brushed Nickel (BN),

DIMENSIONS
20" Diameter x 20" H

LAMPING
(1) 100W max, 120V, E26
Incandescent; CFL; LED

INSTALLATION
Hardwire 5" Canopy, 8' Black or
White Cord

SHADE OPTIONS
LU Classics

8030

Ziggy 3-Arm Chandelier

HARDWARE/FINISH
Brushed Nickel (BN)

DIMENSIONS
30 x 30 x 5"

DIAMETER(NO SHADE OR BULBS)
14"

LAMPING
(3) 100W max, 120V, E26
Incandescent; CFL; LED

INSTALLATION
Hardware, 5" Canopy,
36" Adjustable Stem

SHADE OPTIONS
Metallics, Translucent, LU Classics
Wire-frame, No Shade (-XXX)



9220

Meridian Pendant

HARDWARE/FINISH
Brushed Nickel (BN)

SHADE DIMENSIONS
20" x 12"

LAMPING
(2) 100W max, 120V, E26
Incandescent; CFL; LED

INSTALLATION
Hardwire, 5" Canopy, 8' Black or
White

SHADE OPTIONS
LU Classics

ADDITIONAL FEATURES
Removable Fabric Closed Bottom

9230/9236

Meridian Jumbo Pendant

HARDWARE/FINISH
Brushed Nickel (BN)

DIMENSIONS
(TOP X BOTTOM X SIDE)
30" x 12" (9230)
36" x 12" (9236)

LAMPING
(3) 100W max, 120V, E26
Incandescent; CFL; LED

INSTALLATION
Hardwire, 5" Canopy, 8' Black or
White

SHADE OPTIONS
LU Classics

ADDITIONAL FEATURES
Removable Fabric Closed Bottom





9534

Blip 34 Double Long

HARDWARE/FINISH
Brushed Nickel (BN),

DIMENSIONS
34" x 8"

LAMPING
(4) 60W max, 120V, E26
Incandescent; CFL; LED

INSTALLATION
Hardwire, 5 x 12" Canopy, (2) 8' Black
or White Cord

SHADE OPTIONS
LU Classics & Woods

ADDITIONAL FEATURES
Bottom Fabric Diffuser

9050

Walker 5-Arm Drum

HARDWARE/FINISH
Brushed Nickel (BN),
Oil Rubbed Bronze (OB)

DIMENSIONS
36" x 9" Candelabra

LAMPING
(5) 40W max, 120V, E26
Incandescent; CFL; LED

INSTALLATION
Hardwire 5" Canopy, 36" Adjustable
Stem with 7 degree swivel

SHADE OPTIONS
Metallics, Translucent, LU Classics



9431

Blip 30 Square

HARDWARE/FINISH
Brushed Nickel (BN)

SHADE DIMENSIONS
30" x 8"

LAMPING
(4) 60W max, 120V, E26
Incandescent; CFL; LED

INSTALLATION
Hardwire, 5 x 12" Canopy, (2) 8' Black
or White Cord

SHADE OPTIONS
LU Classics & Woods

ADDITIONAL FEATURES
Bottom Fabric Diffuser

9316

Louie

HARDWARE/FINISH
Brushed Nickel (BN)

SHADE DIMENSIONS
(TOP X BOTTOM X SIDE)
21" x 28"

LAMPING
(1) 100W max, 120V, E26
Incandescent; CFL; LED

INSTALLATION
Hardwire, 5" Canopy, 8' Black or
White Cord

SHADE OPTIONS
LU Classics





9610

Chevron 10

HARDWARE/FINISH
Brushed Nickel (BN)

DIMENSIONS
(TOP X BOTTOM X SIDE)
10" x 10" x 20"

LAMPING
(1) 25W max, 120V, E26
Incandescent; CFL; LED

INSTALLATION
Hardwire, 5" Canopy, 8" Black or
White Cord

SHADE OPTIONS
As is



9620

Chevron 20

HARDWARE/FINISH
Brushed Nickel (BN)

DIMENSIONS
(TOP X BOTTOM X SIDE)
20" x 20" x 10"

LAMPING
(1) 25W max, 120V, E26
Incandescent; CFL; LED

INSTALLATION
Hardwire, 5" Canopy, 8" Black or
White Cord

SHADE OPTIONS
As is





9255

GEO Pendant

HARDWARE/FINISH OPTIONS

Gold Powder Coat(GD), Unfinished Metal (UF)/Black (BK)

OVERALL HEIGHT:

36" wide, 26" high, 24" at base

LAMPING

(1)100W max, 120V, E26 Incandescent; CFL; LED;

ON/OFF

On/Off Rocker Switch on Cord

ADDITIONAL FEATURES

HD-101BN + 2000 swag

Damp Location

SWAG OPTIONS

Aqua (AQ), Red (RD), Black & White (EI), Black (BQ), White (WH) & Orange (OG)

W255

GEO Table Lamp

HARDWARE/FINISH OPTIONS

Gold Powder Coat(GD), Unfinished Metal (UF)/Black (BK)

OVERALL HEIGHT:

21" wide, 16" high, 16" at base

LAMPING

(1)100W max, 120V, E26 Incandescent; CFL; LED;

ON/OFF

On/Off Rocker Switch on Cord

ADDITIONAL FEATURES

HD-101BN + 2000 swag

Damp Location

SWAG OPTIONS

Aqua (AQ), Red (RD), Black & White (EI), Black (BQ), White (WH) & Orange (OG)



CAGE



W922

Dome Large

HARDWARE/FINISH OPTIONS
Unfinished Metal (UF)/Black (BK)

OVERALL HEIGHT, BASE FOOT PRINT
14.5"

LAMPING
(1) 100W Max, 120V, E26
Incandescent; CFL; LED

ON/OFF
On/Off Rocker Switch on Cord

ADDITIONAL FEATURES
HD-101BN + 2000 swag

SWAG OPTIONS
Aqua (AQ), Red (RD), Black & White
(EI), Black (BQ), White (WH) & Orange
(OG)

W101

Squirr Table Lamp

HARDWARE/FINISH OPTIONS
Unfinished Metal (UF)/Black (BK)

OVERALL HEIGHT:
5" Round Cube
8" Height w/Bulb

LAMPING
(1) 100W max, 120V, E26 Incandescent; CFL; LED;

ON/OFF
On/Off Rocker Switch on Cord

ADDITIONAL FEATURES
HD-101BN + 2000 swag
Damp Location

SWAG OPTIONS
Aqua (AQ), Red (RD), Black & White
(EI), Black (BQ), White (WH) & Orange
(OG)



W908

Globe Large

HARDWARE/FINISH OPTIONS
Unfinished Metal (UF)/Black (BK)

OVERALL HEIGHT, BASE FOOT PRINT
13", 11"

LAMPING
(1) 100W Max, 120V, E26
Incandescent; CFL; LED

ON/OFF
On/Off Rocker Switch on Cord

ADDITIONAL FEATURES
HD-101BN + 2000 swag

SWAG OPTIONS
Aqua (AQ), Red (RD), Black & White
(EI), Black (BQ), White (WH) & Orange
(OG)

W922

Nelson Large

HARDWARE/FINISH OPTIONS
Unfinished Metal (UF)/Black (BK)

OVERALL HEIGHT, BASE FOOT PRINT
13", 11"

LAMPING
(1) 100W max, 120V, E26 Incandescent; CFL; LED

ON/OFF
On/Off Rocker Switch on Cord

ADDITIONAL FEATURES
HD-101BN + 2000 swag

SWAG OPTIONS
Aqua (AQ), Red (RD), Black & White
(EI), Black (BQ), White (WH) & Orange
(OG)





2000 Color Swag

HARDWARE/FINISH OPTIONS
Aqua (AQ), Red (RD), Black & White (EI),
Black (BQ), White (WH) & Orange (OG)



OVERALL HEIGHT, BASE FOOTPRINT
Takes shades with a 1-9/16" washer 15' Cord

LAMPING
(Dependent on shade option)
(1) 100W max, 120V, E26, Incandescent; CFL; LED



ON/OFF
On/Off Rocker Switch on Plug-In Cord

SHADE OPTIONS
Not required, various existing Lights Up shades and
cages can be used

ADDITIONAL FEATURES
Suitable for Damp Location





HD-105BN

36" Adjustable Length Stem Kit
Brushed Nickel (BN), Oil Rubbed
Bronze (OB)



HD-115BN

5" Round Canopy
Brushed Nickel (BN)



HD-107BN

Offset Suspension Kit
Brushed Nickel (BN)



HARDWARE



HD-116BN

Rectangular (5"x12") 2 Cord Canopy
Brushed Nickel (BN)



HD-117BN

Semi Flush Mount Kit with 6" Stem
Brushed Nickel (BN)



HD-118BN

Semi Flush Mount Kit with Loop
Brushed Nickel (BN)

HD-307BN/HD-407BN

Aircraft Cable Suspension Kit 3 or 4 wire
Brushed Nickel (BN)



HD-101BN-BLK/WHT

Simple 1-Light Cord-set
Brushed Nickel (BN), Black Cord (BLK) or White Cord (WHT)

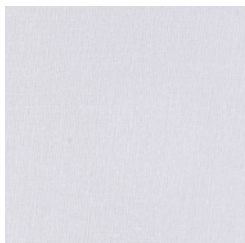


HD-102BN-BLK/WHT

S-Cluster, 2-Light Cord-set
Brushed Nickel (BN), Black Cord (BLK) or White Cord (WHT)

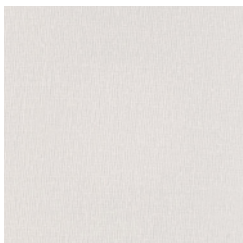


LU CLASSICS



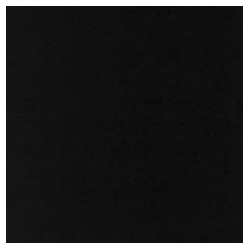
White Linen

WHT



Natural Linen

NAT



Black Linen

BKL



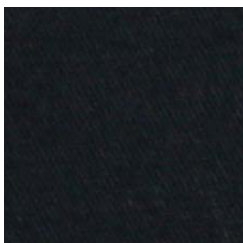
Ivory Ipanema

IVY



Red Dupioni

RDP



Black Silk Glow

BKG



Eggshell Silk Glow

EGG



Croissant Silk Glow

CRO



Platinum Silk Glow

PLA



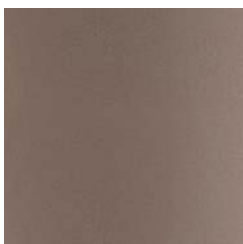
Gold Silk Glow

GOL



Pebble Silk Glow

PEB



Coca Chintz

CCC



Burnish Chintz

BUC



Latte Chintz

LAC



Mango Leaf

MLF



Black Mumm

BKM



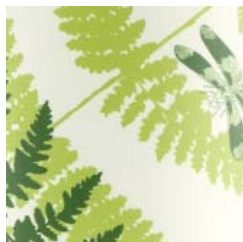
Red Mumm

RDM



Kimono

KIM



Fern

FRN



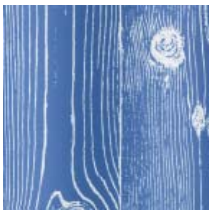
SHADE MATERIALS



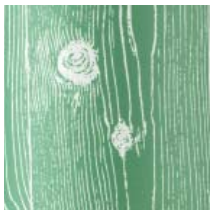
Anna Green ANG



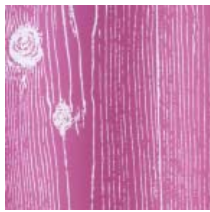
Anna Red ANR



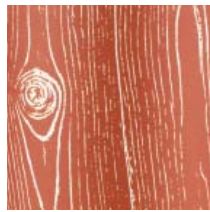
Faux Bois Marine FBB



Faux Bois Kelly FBG



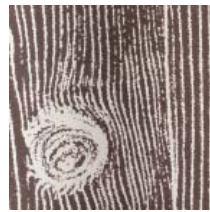
Faux Bois Fuchsia FBF



Faux Bois Paprika FBP



Faux Bois Light FBL



Faux Bois Dark FBD



Shetland Linen LNS



Penguin Tweed PEN



Rose Tweed ROS



Dijon Tweed DIJ



Dove Cotton Duck CDD



Pale Burlap BLP



Natural Burlap BLP



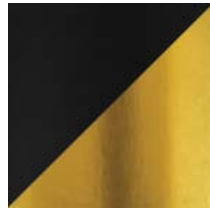
White/Silver MWS



White/Gold MWG

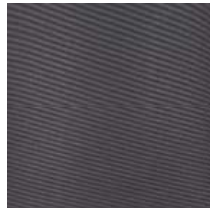


Black/Silver MBS



Black/Gold MBG

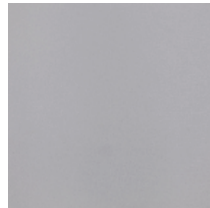
METALLICS



Black Organza BOR



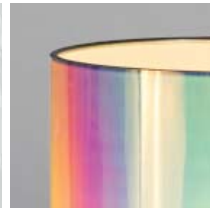
Gold Organza GOR



Silver Organza SOR



Clear Optical OPT



Opal Duotrans ODT



Gold Duotrans GDT

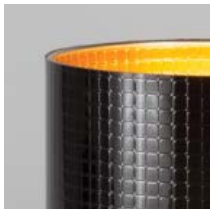


Silver Duotrans SDT



Cooper Duotrans CDT

ORGANZAS



Quilted Duotrans QDT



Textured Duotrans BDT

PARCHMENTS



Chamois Parch. PHC

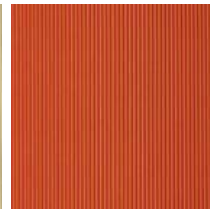


Nutmeg Parch. PHN

PLEATS



Chamois PPC



Tangerine PPG



White PPW

WOOD VENEERS



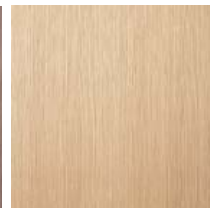
Cherry Veneer CWD



Ebony Veneer EWD



Walnut Veneer WWD



White Oak Veneer OWD



Zebrawood Veneer ZWD



+1.718.499.4209

WWW.LIGHTSUPLIGHTING.COM

MAIL@LIGHTSUPLIGHTING.COM

141 FLUSHING AVE, BLDG 77 STE 907, BROOKLYN, NY 11205

•
L I G H T S U P