

# METROPOLITAN<sup>®</sup>

## LIGHTING FIXTURE CO.

Item #:	UPC Code:
<b>N6066-265</b>	
Product Family Name:	Finish:
<b>Gran Canaria™ Collection</b>	<b>Cartouche Bronze</b>
Category:	Category Type:
	<b>Sconce</b>
Certification	
Patents	
Notes:	
<b>5 1/2" Projection</b>	

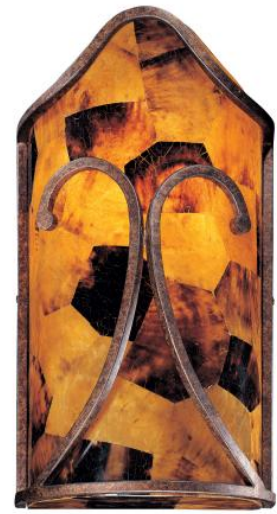


Image File Name:  
N6066-265--  
1377186228.jpg



## MEASUREMENTS

Width:	Length:	Height:	Extension:
<b>9.25</b>		<b>16 1/4"</b>	<b>6</b>
Height Adjustable:	Min Overall Height:	Max Overall Height:	Slope:
<b>No</b>			<b>No</b>
Wire Length:	Chain Length:	Safety Cable Included:	Net Weight
		<b>No</b>	<b>4.12</b>
Canopy Width:	Canopy Height:	Canopy Length:	
Backplate Width:	Backplate Height:	Center to Top:	Center to Bottom:

## LAMPING

No. of Bulbs:	Light Type:			
<b>1</b>	<b>A19</b>			
Max Bulb Wattage:	Socket:			
<b>75</b>	<b>Medium</b>			
Dimmable:	Ballast:	Rated Life Hours:	Photocell Included:	Lamps Included:
<b>No</b>				<b>No</b>
Lamp Included:	Color Temp.:	CRI:	Initial Lumens:	Delivered Lumens:
<b>No</b>				



## SHIPPING

Carton Width:	Carton Height:	Carton Length:	
<b>12.000</b>	<b>8.500</b>	<b>19.000</b>	
Carton Weight:	Carton Cubic Feet:	Small Package Shippable:	
<b>6.290</b>	<b>1.120</b>	<b>Yes</b>	
Master Pack Width:	Master Pack Height:	Master Pack Length:	
Master Pack Weight:	Master Cubic Feet:	Multi-Pack:	Master Pack:
		<b>1</b>	<b>1</b>

## SHADE / GLASS

Description:	Material:	
	<b>Cracked Pen Shell</b>	
Part No.:	Quantity:	
Width:	Height:	Length:

For additional information, please contact Customer Care: 1-800-221-7977

Product depicted on this spec sheet is protected by United States Federal and/or State laws including US Patent, Trademark and/or Copyright and unfair competition laws. Unauthorized reproduction or use carries severe legal penalties

Rev 12.31.2015