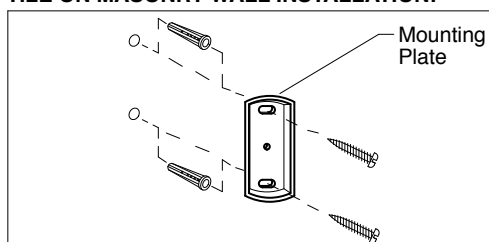


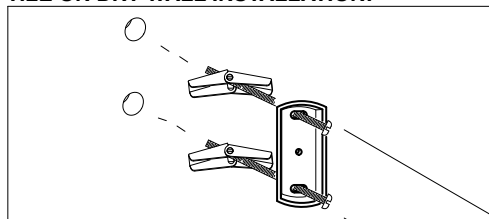
ASSEMBLY INSTRUCTIONS FOR BA1206:

(E) 09/01

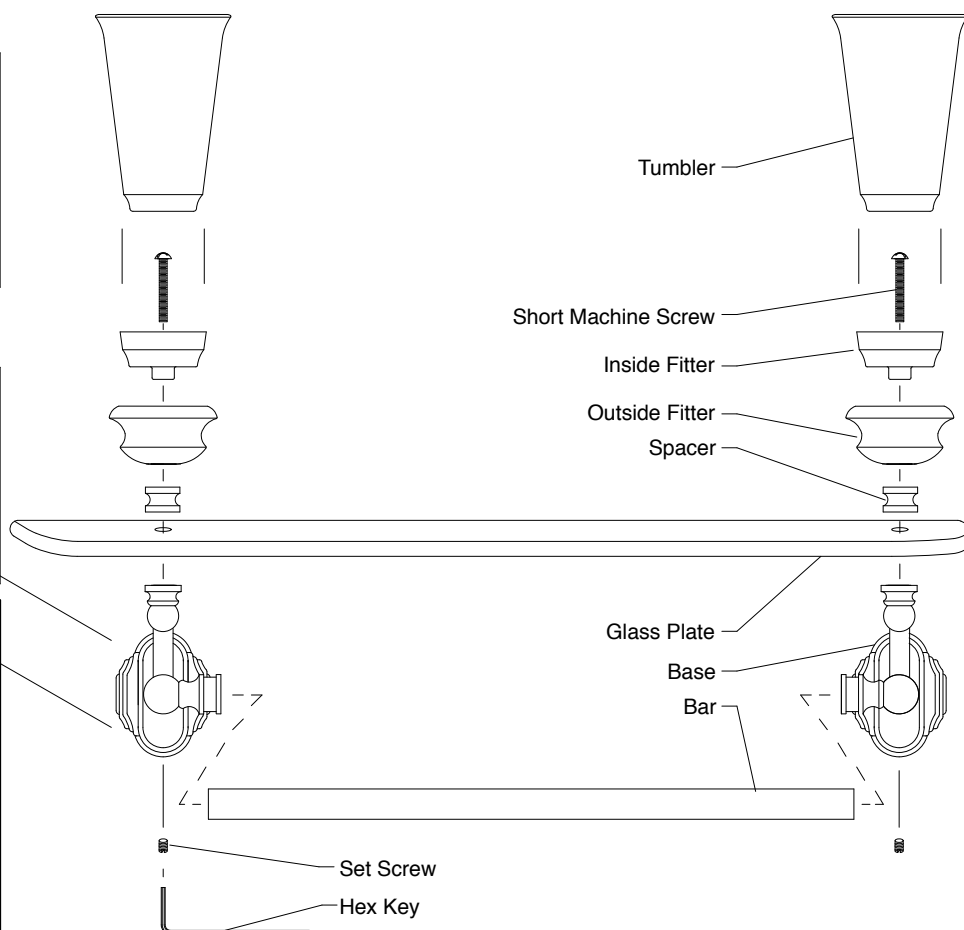
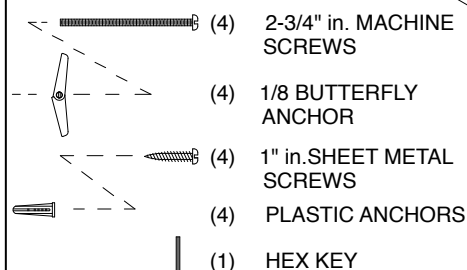
WOOD WALL or MASONRY WALL or TILE ON MASONRY WALL INSTALLATION:



DRY WALL or TILE ON DRY WALL INSTALLATION:



ENCLOSED WALL MOUNTING HARDWARES:



1. Place bar in between recessed hole in bases.
2. Mount glass plate and then spacer, outside fitter, and inside fitter on top of base by fastening with short machine screw. Repeat other side. See above illustration.
3. Hold the product on desired wall location and lightly mark outline of base. Place mounting plate in vertical position at center of marked outline and mark a dot at center of each slotted holes. Repeat other side. Make certain the two set of vertical dots are lined horizontally to each other. Suggest use of a leveler.

4. Dry wall or Tile on Dry Wall Installation:

Pre-drill holes using 3/8" drill bit. (Tile on dry wall installation requires 3/8" masonry drill bit)

Wood Wall Installation: Pre-drill holes using 1/8" drill bit.

Masonry Wall or Tile on Masonry Wall Installation: Pre-drill holes using 3/16" masonry drill bit.

5. **Dry Wall or Tile on Dry Wall Installation:** Insert machine screws thru two slotted holes in mounting plate. Thread butterfly anchors into machine screws as shown in diagram. Pinch together the ends of butterfly anchors and push

into pre-drilled 3/8" holes until anchors spring open inside of wall. While pulling mounting plate away from wall, tighten screws with a screw driver.

Wood Wall Installation: Insert sheet metal screws thru two slotted holes in mounting plate. Fasten screws directly into pre-drilled 1/8" holes.

Masonry or Tile on Masonry Wall Installation: Insert plastic anchors into pre-drilled 3/16" holes. Insert sheet metal screws thru two slotted holes in mounting plate. Fasten screws into plastic anchors.

6. Mount the product onto mounting plate and tighten set screw at bottom of each base with provided hex key.

7. Place glass tumbler onto inside fitter until it checks securely. Repeat other side.

Care and Cleaning Instructions:

Using a soft cloth or sponge wash with warm and soapy water. Do not use abrasive cleaners or cleaner containing bleach.

© FEISS INDUSTRIES

MURRAY FEISS