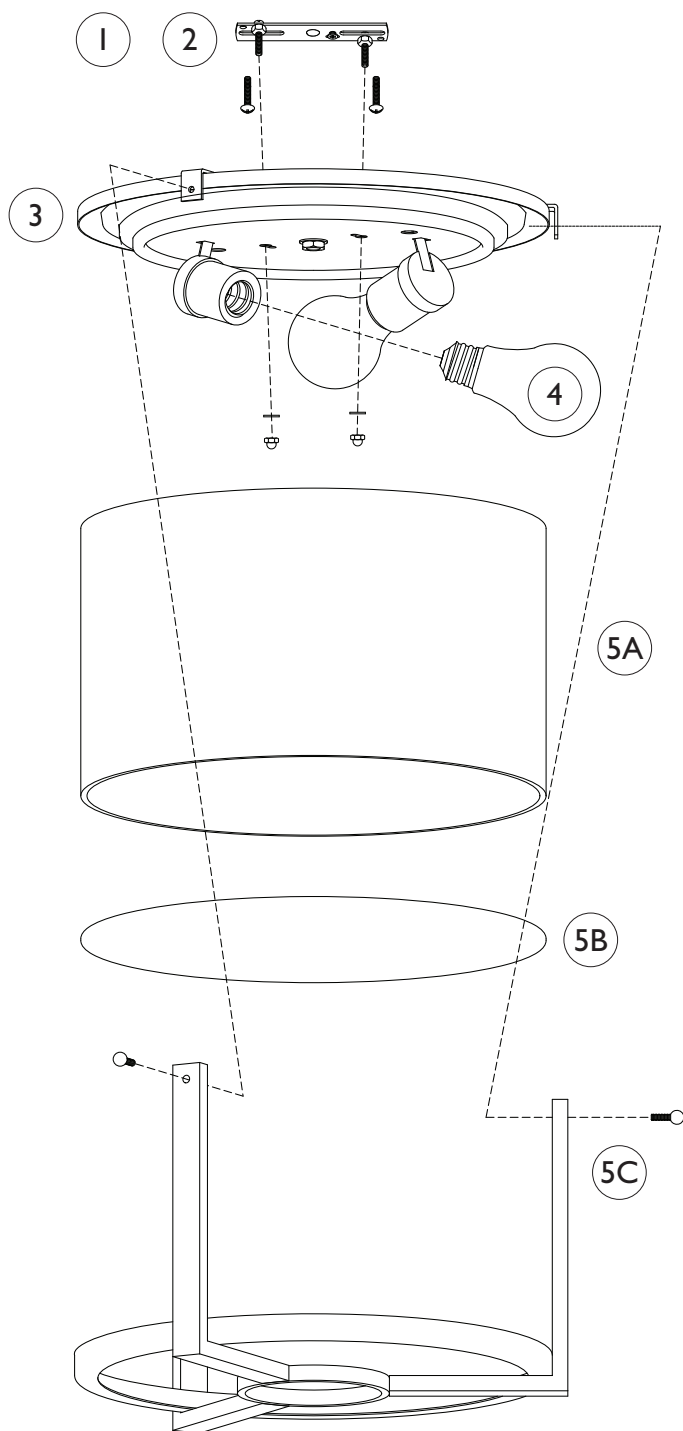


# Assembly Instructions For

# FM357

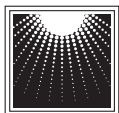
(E) 5/10



## IMPORTANT TURN OFF THE POWER AT THE MAIN FUSE OR CIRCUIT BREAKER BOX BEFORE STARTING INSTALLATION

Carefully unpack and identify all parts before assembly.  
Bulbs not included.

1. Install mounting plate:
  - A. Fasten two long machine screws (supplied) into opposite side of the mounting plate from green grounding screw head.
  - B. Take supply wires from outlet box and carefully pass them through center hole of mounting plate.
  - C. Install mounting plate onto the outlet box using two screws supplied with outlet box.
  - D. Test install fixture plate to make certain about 1/4" (5mm) of screws thread protrude outside of fixture plate. If not then remove fixture plate and adjust screws length accordingly. Secure screws length by fastening with two hex nuts. Make certain not to spin screws during fastening. Place fixture plate aside.
  - E. Spread electrical wires so that black wires are on one side of the outlet box and the white wires are on the other side.
2. Connect electrical wires:
  - A. Connect white fixture wire to white supply wire from outlet box with wire connector. Connect black fixture wire to black supply wire from outlet box with wire connector.  
NOTE: Black outlet box wire may be red, round and smooth and/or have copper conductor. White outlet box wire may be square and ridged and/or have a silver conductor.
  - B. Connect fixture ground wire (without plastic insulation) to ground wire from outlet box (usually with green insulation) with wire connector.  
Note: If there is no supply ground wire at outlet box then attach fixture ground wire securely onto green grounding screw located at mounting plate.  
IMPORTANT: Never connect ground wire to black or white supply wires (from outlet box).
3. While carefully tucking all electrical wires inside of the fixture plate, install the fixture plate onto the mounting plate by fastening with two cap nuts.
4. Install bulb (not included). See relamping label located at socket area for type and maximum allowed wattage.
5. A. Slide the shade onto the fixture plate until the shade comes to a stop.  
B. Place the glass diffuser onto the bottom of the shade.  
C. Place the frame onto the glass diffuser and shade. Secure by installing the frame onto the fixture plate with ball cap screws.



**MURRAY  
FEISS**

GENERATION  
BRANDS™