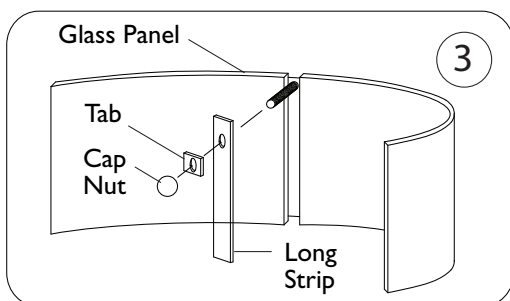
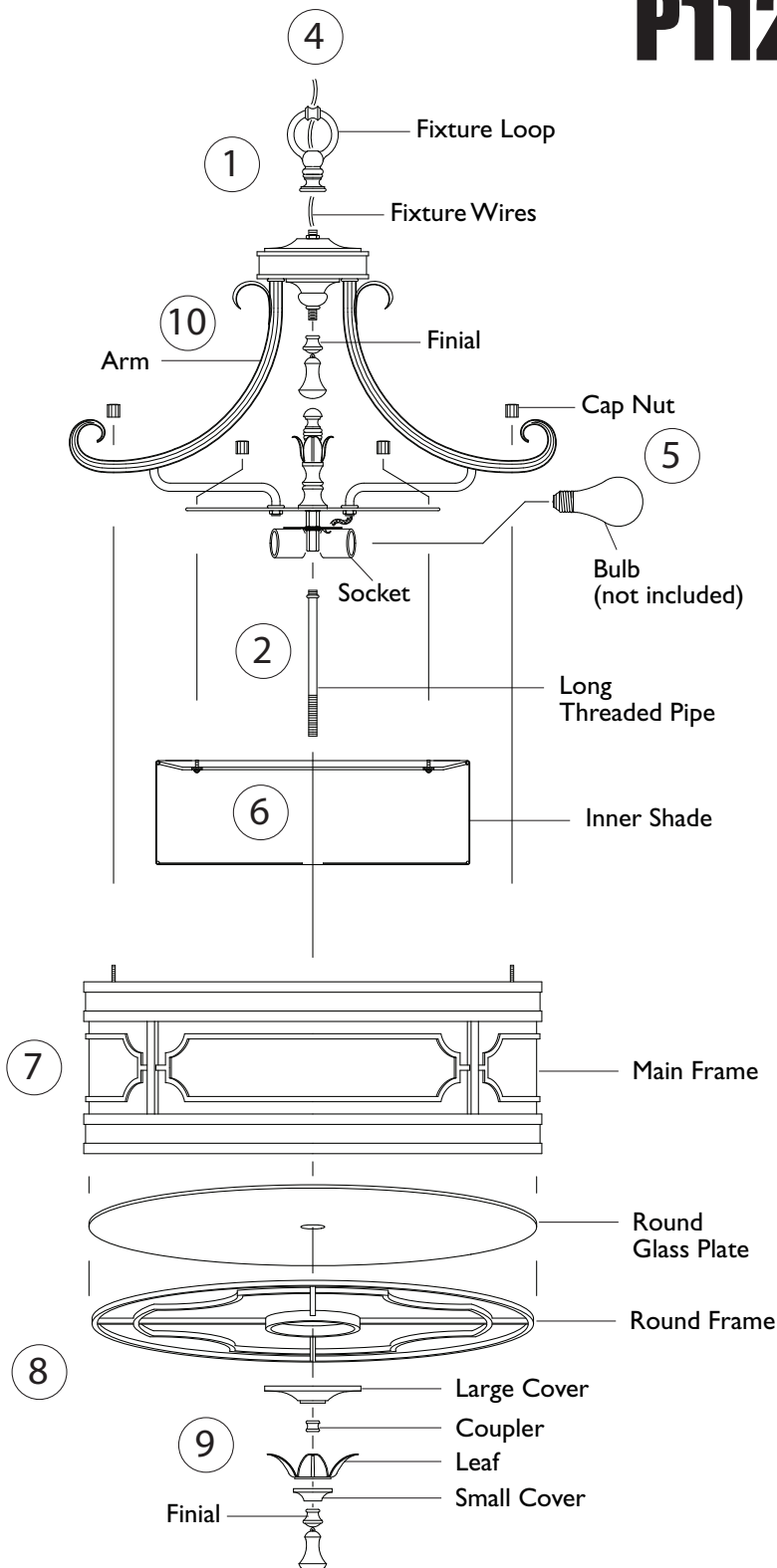


Assembly Instructions For

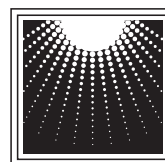
P1123 (E) 10/07



IMPORTANT TURN OFF THE POWER AT THE MAIN FUSE OR CIRCUIT BREAKER BOX BEFORE STARTING INSTALLATION

Carefully unpack and identify all parts before assembly.
Bulb not included.

1. Slip fixture loop through fixture wires. Then install by screwing onto top of fixture.
2. Install long threaded pipe by screwing into bottom of socket assembly. Note correct position of pipe at illustration.
3. Install glass panels:
 - A. Gently grabbing onto a glass panel, place at inside of main frame. Make certain bottom of panel sits at inside groove.
 - B. While one person is holding onto this panel, have another person install another panel adjacent to it.
 - C. Lock both panels by fastening with a long strip, tab and cap nut. Do not over tighten.
 - D. Repeat rest panels.
4. Follow enclosed supplement installation instructions for electrical and fixture installation onto house outlet box. If you do not have an outlet box at desired location to attach the fixture than hire a qualified electrician to create one.
5. Install bulb (not included). See relamping label located at socket area for type and maximum allowed wattage.
6. Install inner shade onto metal plate by fastening with cap nuts from above.
7.
 - A. Spread open arms so they are equally spaced apart from each other.
 - B. Install main frame onto arms by fastening with cap nuts from above.
8. Slip round glass plate, round frame, and large cover through the long threaded pipe. Secure them in place by fastening with coupler. **IMPORTANT:** Do not over tighten.
9. Slip leaf and small cover through the pipe. Secure them in place by carefully fastening with finial.
10. Install another finial at upper inside section of fixture.



**MURRAY
FEISS**
Generation Brands™