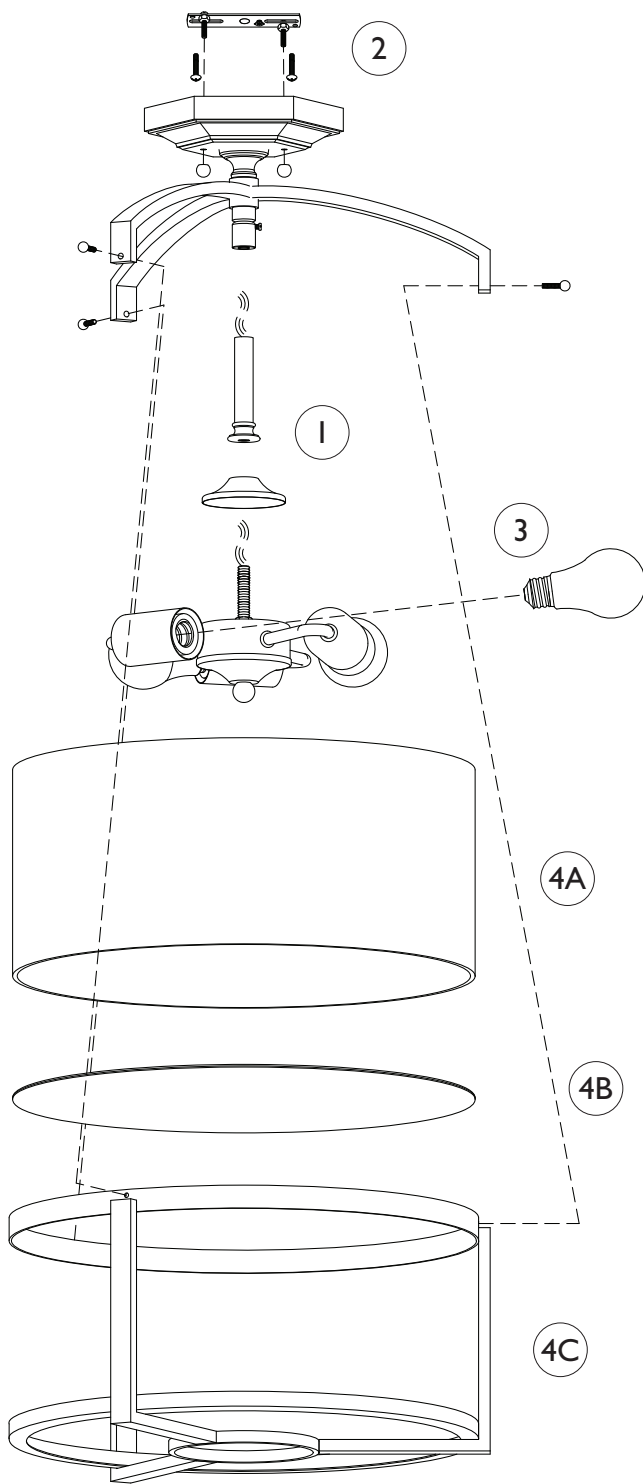


Assembly Instructions For

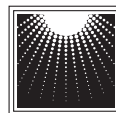
SF291 (E) 5/10



IMPORTANT TURN OFF THE POWER AT THE MAIN FUSE OR CIRCUIT BREAKER BOX BEFORE STARTING INSTALLATION

Carefully unpack and identify all parts before assembly.
Bulbs not included.

1. Install center tube and cover by screwing threaded pipe into swivel located at top of socket assembly. Note correct position of center pipe at illustration.
2. Follow enclosed supplement installation instructions for electrical and fixture installation onto house outlet box. If you do not have an outlet box at desired location to attach the fixture then hire a qualified electrician to create one.
3. Install bulb (not included). See relamping label located at socket area for type and maximum allowed wattage.
4. A. Slide the shade onto the fixture plate until the shade comes to a stop.
B. Place the glass diffuser onto the bottom of the shade.
C. Place the frame onto the glass diffuser and shade. Secure by installing the frame onto the fixture plate with ball cap screws.



**MURRAY
FEISS**

GENERATION
BRANDS™