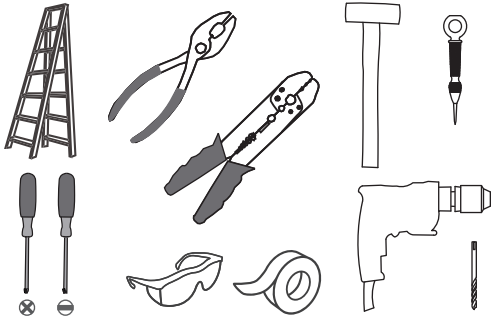
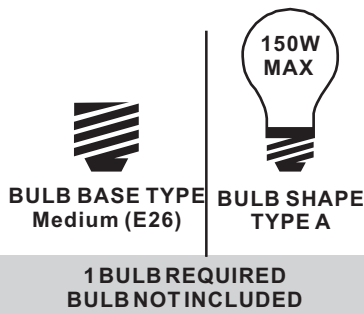


Tools Required



Light Source



Warnings and Cautions

Turn off the electricity at the circuit breaker before installation. Consult a licensed electrician if in doubt about installation.



Turn off power to the fixture and allow the bulbs to cool before replacing.

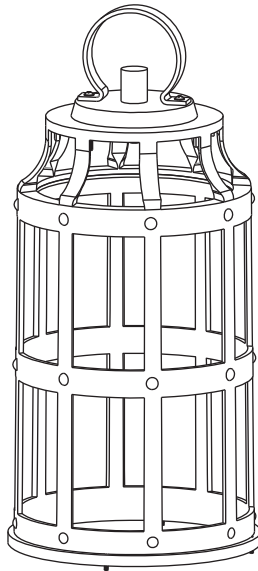
Package Contents

Preparation: Identify and inspect all parts before beginning the installation.

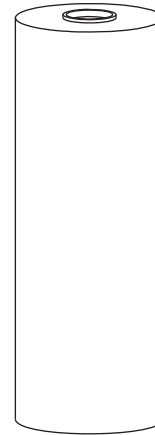
Missing or damaged parts? Contact your original place of purchase.

PARTS BAG

-  **A** Mounting Screw x 3
-  **B** Wire Connector x 3



C Cage x 1



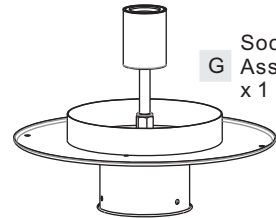
D Shade x 1



E Flat Washer x 1



F Big Lock Ball x 1


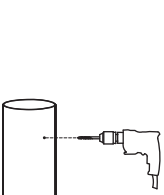
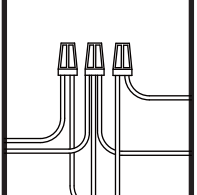
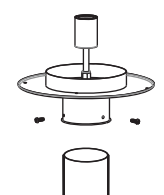
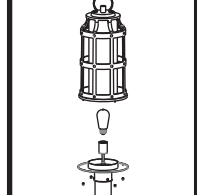


G Socket Assembly x 1

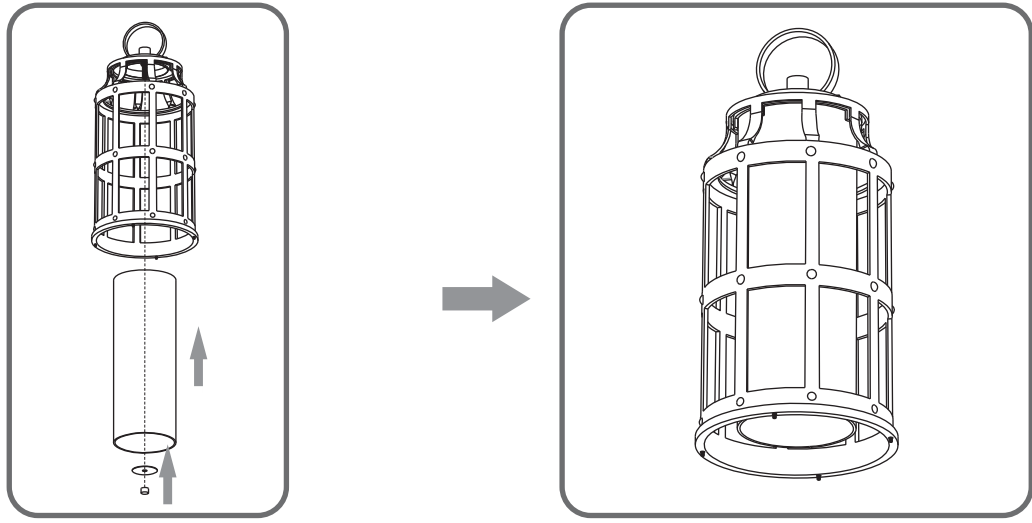


H Small Lock Ball x 4

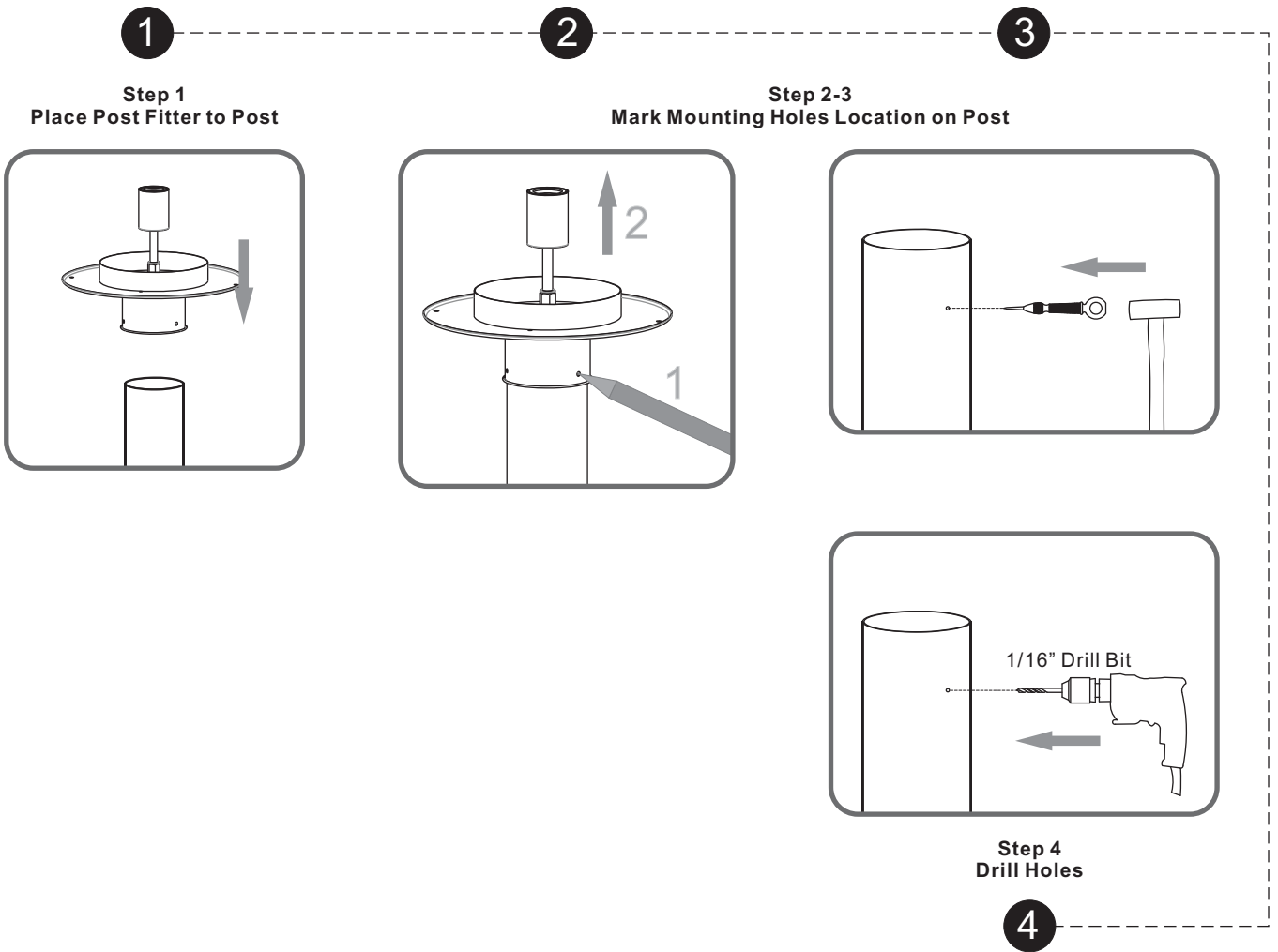
Table of Contents

Shade	Drill Holes	Wiring	Socket Assembly	Bulb & Cage
				
STEP 1	STEP 2	STEP 3	STEP 4	STEP 5

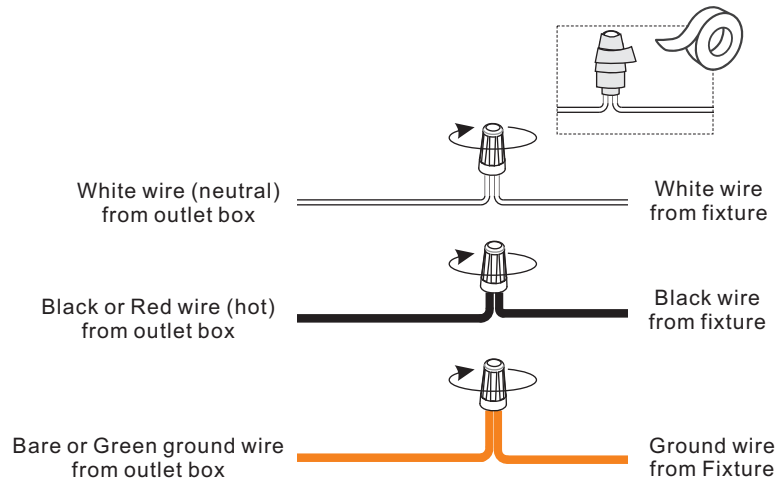
STEP 1



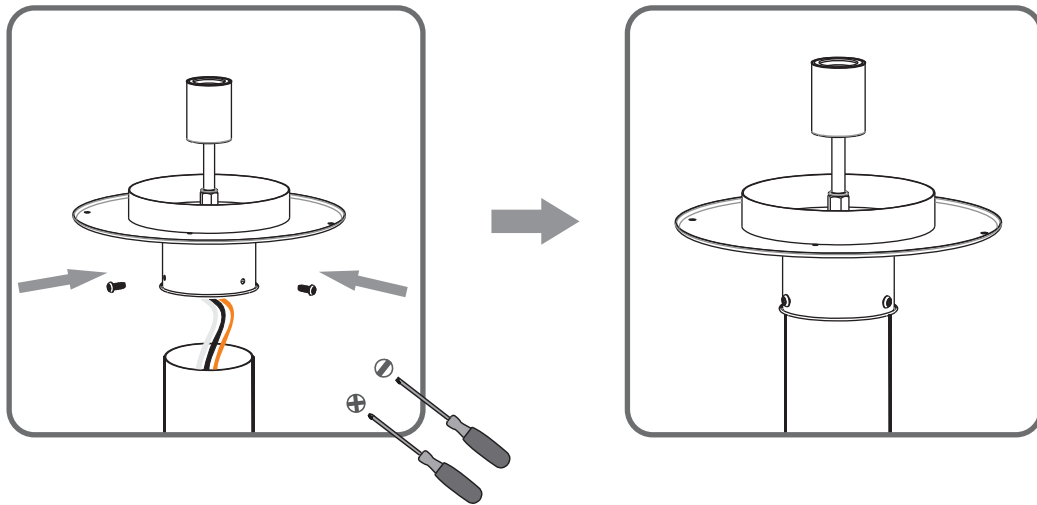
STEP 2



STEP 3



STEP 4



STEP 5

