

# QUOIZEL

6 CORPORATE PARKWAY  
GOOSE CREEK, SC. 29445  
www. quoizel. com

Quoizel, Inc.  
6 Corporate Parkway  
Goose Creek, SC 29445

Customer Service  
Phone 631.273.2700  
Fax 631.231.7102  
www. quoizel. com

## Assembly Instruction Sheet #IS-OZ1613 For Style OZ1613PN and OZ1613IN

**Tools Required:** Flathead screwdriver, Phillips screwdriver, pliers, wire cutters, wire strippers, electrical tape, safety glasses.

**Bulb Recommended:** (2) Medium Base 60W Maximum, Alternate bulb (2) 13W CFL

**Estimated Assembly Time:** 20-30 minutes

**Preparation:** Identify and inspect all parts before beginning installation. Check package content list and diagrams below to be sure all parts are present. If any parts are missing or damaged, do not attempt to assemble, install, or operate the fixture. Contact customer service for replacement parts.

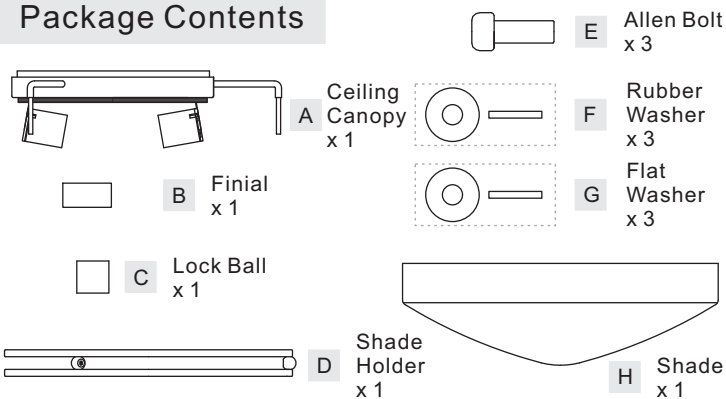
### ⚠ Warnings and Cautions

Turn off electricity at circuit breaker or main fuse box before installation. Consult a licensed electrician if in doubt.

These instructions are provided for your safety. It is very important you read them completely before installing the fixture. We strongly recommend that a licensed, professional electrician perform the installation.

Disconnect fixture from power source before replacing bulbs. Make sure bulbs are given sufficient time to cool before removal. Do not subject glass parts to any shock while in operation or shattering may result.

### Package Contents



### STEP 1 – Install Crossbar

A. Attach the Crossbar (AA) to the Outlet Box with the head of the Green Ground Screw facing you. Secure it with Outlet Box Screws (not included). Tighten until snug.

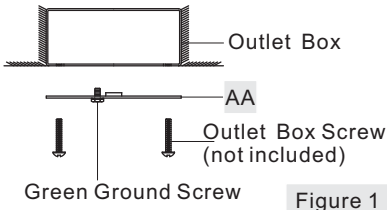
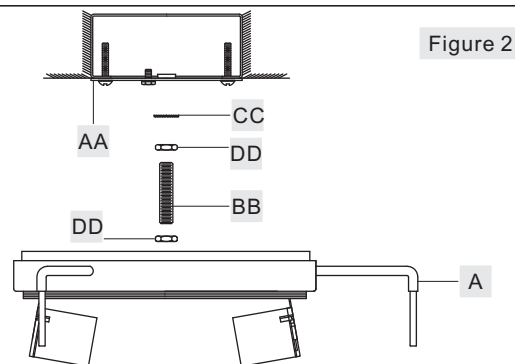
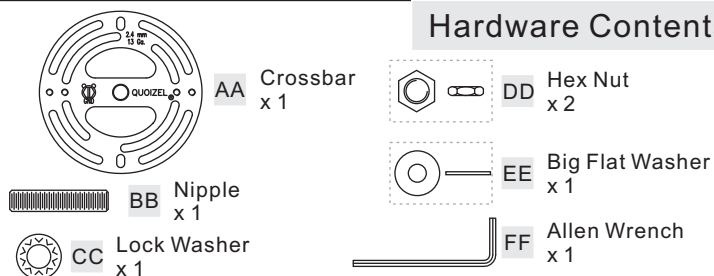


Figure 1

### STEP 2 – Attach Nipple to Crossbar

- Thread one Hex Nut (DD) onto the top end of the Nipple (BB).
- Place one Lock Washer (CC) over the top end of the Nipple (BB) and then thread the Nipple (BB) into the center lock hole of the Crossbar (AA).
- Using pliers, thread the Hex Nut (DD) against the Crossbar (AA) and hand tighten until snug.
- Thread the other Hex Nut (DD) onto the other end of the Nipple (BB). Thread this Hex Nut (DD) on just enough so the inside surface of the Ceiling Canopy (A) rests against it. \* You may have to trial fit the Ceiling Canopy (A) one more times to insure this distance also. This Hex Nut (DD) is needed here to prevent you from crushing

### Hardware Contents



### STEP 3 - Wire Connections

- Use standard wire connectors (not included) to make all wire connections. (Connectors are not included with fixture.) Strip and prepare wire ends according to instructions supplied with connectors.
- Connect White Supply Wire from the Outlet Box to Ribbed side Wire from fixture.
- Connect Black (or Red) Supply Wire from the Outlet Box to Smooth side Wire from fixture.
- Connect Ground Wire from the Outlet Box to Ground Wire from fixture.
- Twist connectors until wires are tightly joined together.
- Wrap each connection with approved electrical tape and carefully stuff all the connected wires into the Outlet Box.

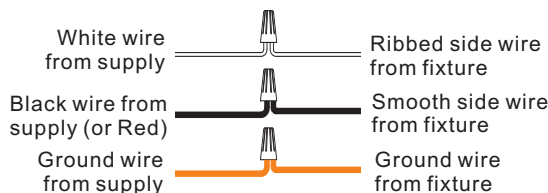


Figure 3

Thank you for purchasing a Quoizel product.  
Need assistance with parts or assembly? Call Quoizel customer service at 1-631-273-2700  
or visit us on-line at [www. quoizel. com](http://www. quoizel. com)

#### STEP 4 – Attach Ceiling Canopy

- Position the Ceiling Canopy (A) to the ceiling by passing the Nipple (BB) through the center hole.
  - Slip on the Big Flat Washer (EE) and then thread the Finial (B) to the bottom end of the Nipple (BB). Snug down assembly until the Ceiling Canopy (A) is flush against the ceiling.
- \* Be sure that there are no trapped or pinched wires along the edge of the Ceiling Canopy (A).

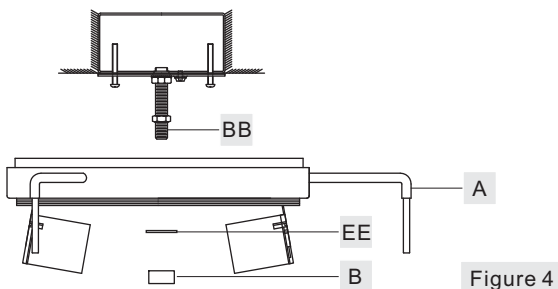


Figure 4

#### STEP 5 – Install Bulb

- This fixture uses standard bulb with a medium screw base. Maximum 60 watts.
- Insert bulb and screw snugly into place.

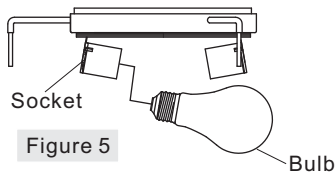


Figure 5

#### STEP 6 – Attach Shade and Shade Holder together

- Place the Rubber Washer (F) and Flat Washer (G) over the Allen Bolt (E).
- Place the Shade (H) into the Shade Holder (D), line up the hole on the Shade (H) and the mounting on the Ball. By using Allen Wrench (FF), thread the Allen Bolt (E) against the Shade (H), hand tighten until snug.

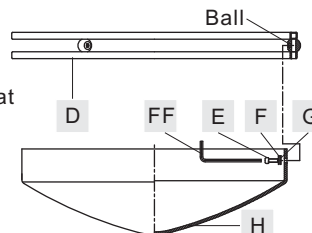


Figure 6

#### STEP 7 – Install Shade

- Pass the hole on the Shade Holder (D) through the Bolt, secure by threading the Lock Screw (C) onto the Bolt, hand tighten until snug.

Your fixture is now assembled and ready to use. Enjoy!

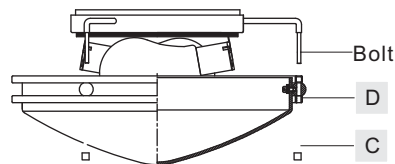
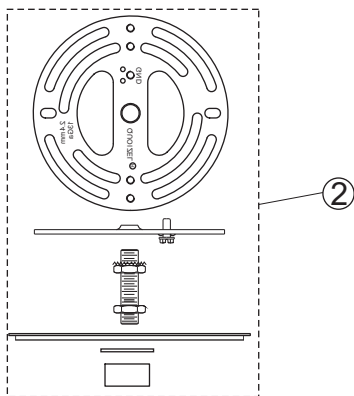


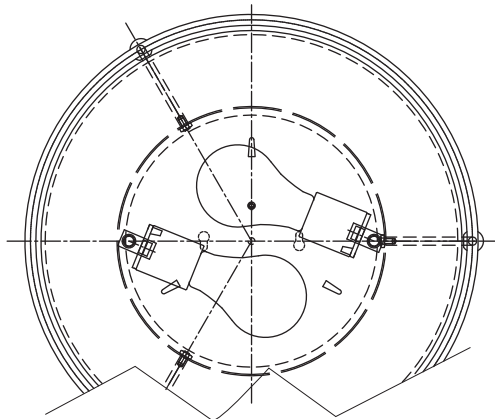
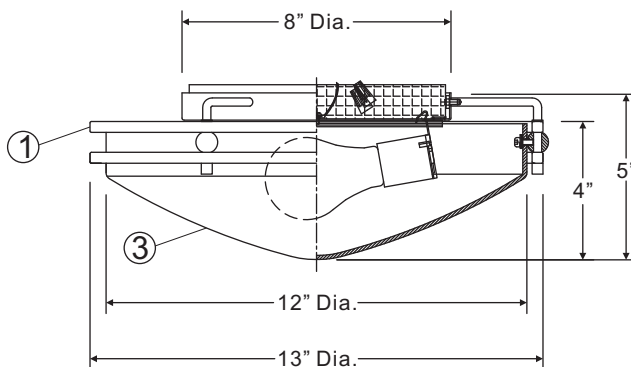
Figure 7

OZ1613PN/OZ1613IN

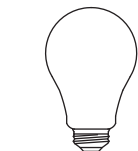
FINISH: PALLADIAN BRONZE  
/IRON GATE



②



NOTE: ALL DIMENSIONS ARE ROUNDED UP TO THE NEAREST 1/2"



(2) 60W Medium  
Base Bulbs  
(Not Supplied)

NO.	PART NUMBER	REPLACEMENT PART DESCRIPTION	REQ.
1	11613INOZ	BASE IRON GATE FOR OZ1613IN	1
2	8602KIT	KIT QMH-13 REPLACEMENT	1
3	G2236SH	SHADE OPAL ETCHED 12.5"D	1

Thank you for purchasing a Quoizel product.  
Need assistance with parts or assembly? Call Quoizel customer service at 1-631-273-2700  
or visit us on-line at [www.quoizel.com](http://www.quoizel.com)