

Quoizel, Inc.
6 Corporate Parkway
Goose Creek, SC
29445

Customer Service
Phone 631.273.2700
Fax 631.231.7102
www.quoizel.com

Assembly Instruction Sheet #IS-PY8601AN For Style PY8601AN

Tools Required: Flathead screwdriver, Phillips screwdriver, pliers, wire cutters, wire strippers, electrical tape, safety glasses.

Bulb Recommended: (1) Frosted G9 Halogen Bulbs 75W Maximum (Supplied)

Estimated Assembly Time: 20-30 minutes

Preparation: Identify and inspect all parts before beginning installation. Check package content list and diagrams below to be sure all parts are present. If any parts are missing or damaged, do not attempt to assemble, install, or operate the fixture. Contact customer service for replacement parts.



Warnings and Cautions

Turn off electricity at circuit breaker or main fuse box before installation. Consult a licensed electrician if in doubt.

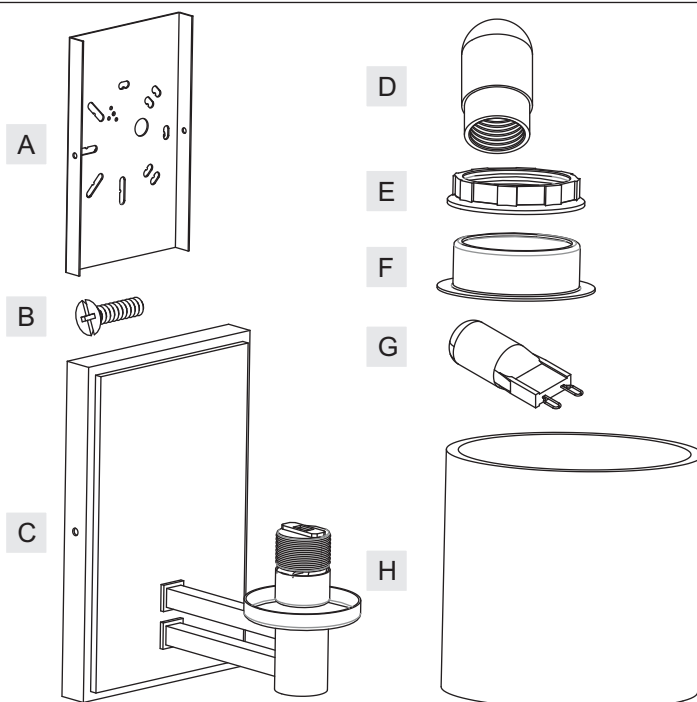
These instructions are provided for your safety. It is very important you read them completely before installing the fixture. We strongly recommend that a licensed, professional electrician perform the installation.

Disconnect fixture from power source before replacing bulbs. Make sure bulbs are given sufficient time to cool before removal. Do not subject glass parts to any shock while in operation or shattering may result.

Do not touch the bulb with bare hands use a cloth or glove.

Package Contents

| Part | Description | Quantity |
|------|-----------------|----------|
| A | Inner Backplate | 1 pc. |
| B | Mounting Screw | 2 pcs. |
| C | Fixture Body | 1 pc. |
| D | Bulb Shield | 1 pc. |
| E | Socket Collar | 1 pc. |
| F | Steel Collar | 1 pc. |
| G | G9 Bulb | 1 pc. |
| H | Shade | 1 pc. |

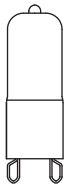
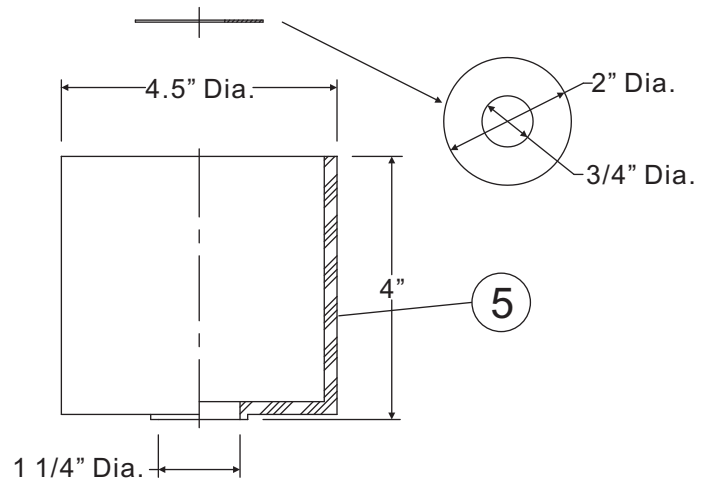
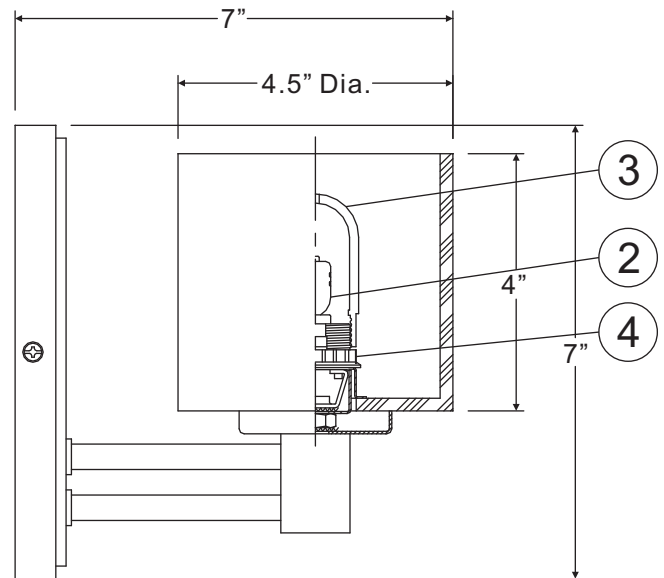
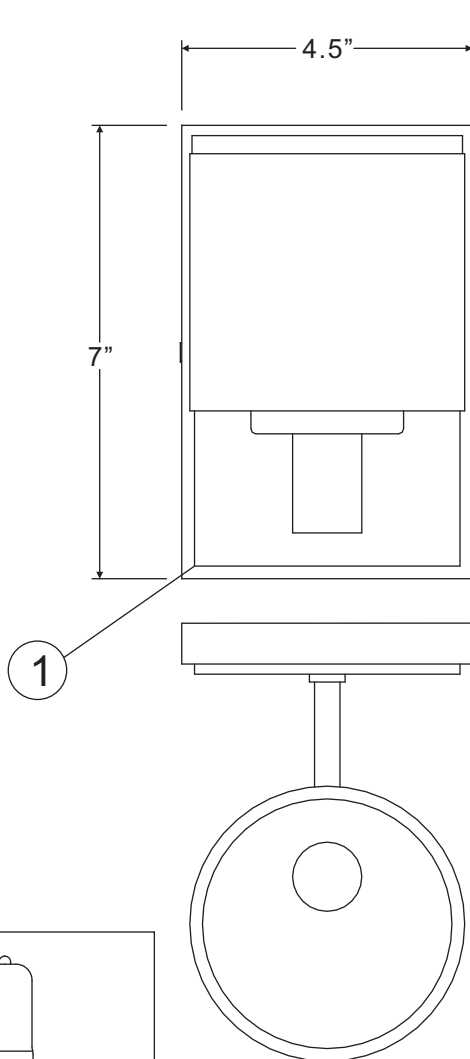
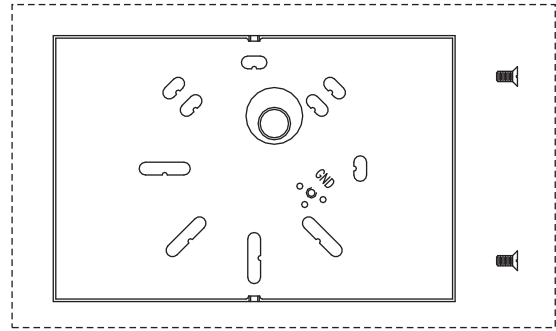


Thank you for purchasing a Quoizel product.

Need assistance with parts or assembly? Call Quoizel customer service at 1-631-273-2700
or visit us on-line at www.quoizel.com

PY8601AN

FINISH: ANTIQUE NICKEL



(1) 75W Frosted
G9 Halogen Bulb
(Supplied)

NOTE: ALL DIMENSIONS ARE ROUNDED UP TO THE NEAREST 1/2"

| NO. | PART NUMBER | REPLACEMENT PART DESCRIPTION | REQ. |
|-----|-------------|--------------------------------------------|------|
| 1 | 18601ANPY | BASE ANTIQUE NICKEL PY8601AN | 1 |
| 2 | I828SF | BULB 130V 75W HALOGEN G9 FROSTED | 1 |
| 3 | G2448PS | BULB SHIELD CLEAR GLASS | 1 |
| 4 | M2263RG | RETAINER RING FOR G9 SOCKET | 1 |
| 5 | G2441SH | SHADE ETCHED OPAL GLASS WITH WASHER 4.5" D | 1 |

Assembly Instruction Sheet #IS-PY8601AN

For Style PY8601AN

STEP 1 – Attach Inner Backplate to Outlet Box

- A. Attach the Inner Backplate (A) to Outlet Box and secure by threading Outlet Box Screws (not supplied) into the Mounting Holes on the Outlet Box. Tighten until snug.

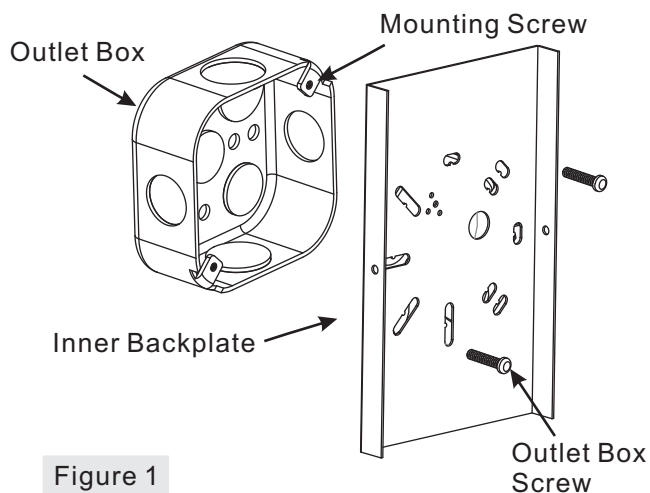


Figure 1

STEP 2 – Make Wire Connections

- A. Use standard wire connectors to make all wire connections. (Connectors are not included with fixture.) Strip and prepare wire ends according to instructions supplied with connectors.
- B. Connect White Supply Wire from the Outlet Box to White Wire from fixture.
- C. Connect Black (or Red) Supply Wire from the Outlet Box to Black Wire from fixture.
- D. Connect Ground Wire from the Outlet Box to Ground Wire from fixture.
- E. Twist connectors until wires are tightly joined together.
- F. Wrap each connection with approved electrical tape and carefully stuff all the connected wires into the Outlet Box.

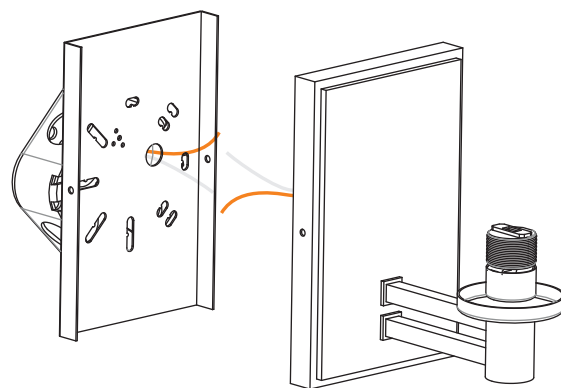


Figure 2

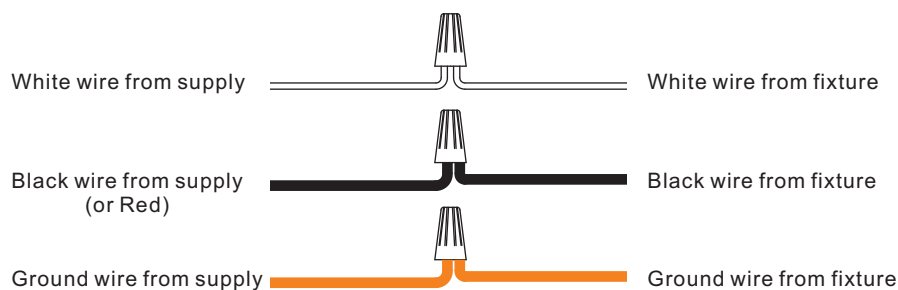


Figure 3

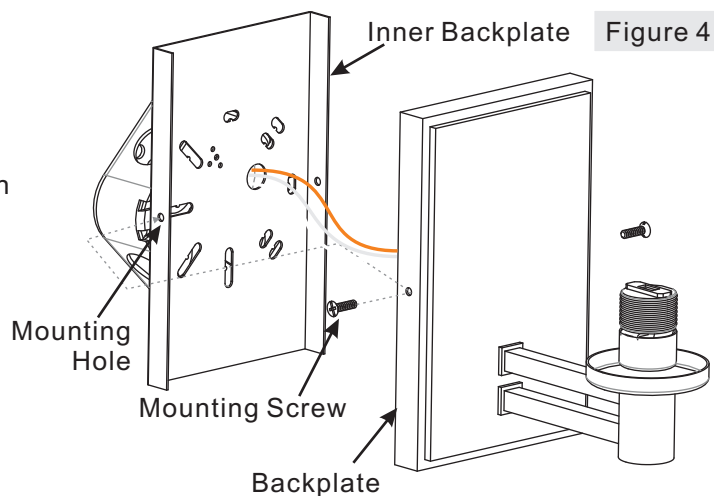
Thank you for purchasing a Quoizel product.

Need assistance with parts or assembly? Call Quoizel customer service at 1-631-273-2700
or visit us on-line at www. quozel. com

Assembly Instruction Sheet #IS-PY8601AN For Style PY8601AN

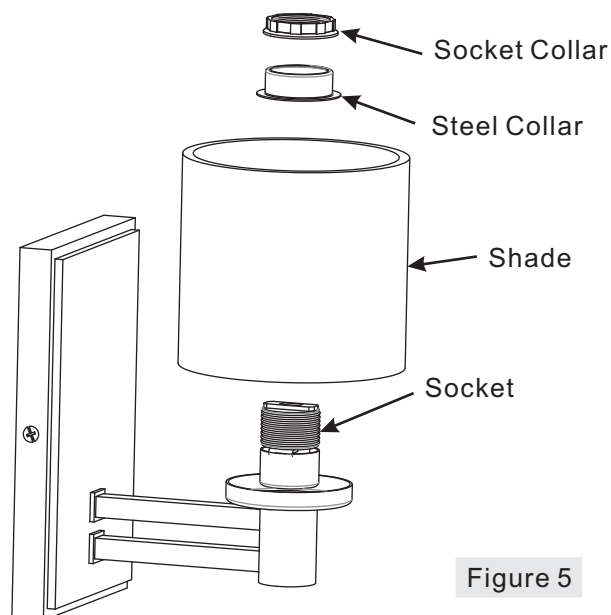
STEP 3 – Attach Fixture Body to Inner Backplate

- A. Place the backplate of the Fixture Body (C) onto the Inner Backplate (A). Line up holes on both of them. Thread Mounting Screws (B) into the mounting holes on the Inner Backplate (A) and hand tighten until snug to secure them.



STEP 4 – Attach Shade to Socket

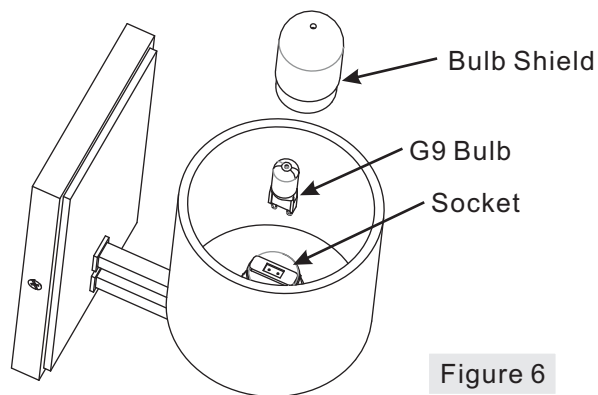
- A. Place the Shade (H) and the Steel Collar (F) over the Socket as shown. Threading the Socket Collar (E) onto the Socket. Hand tighten until snug.



STEP 5 – Install Bulb and Bulb Shield

- A. This fixture uses frosted G9 halogen bulb with a G9 base. Maximum 75 watts.
B. Insert bulb and push snugly into place.
C. Thread the Bulb Shield (N) onto the Socket. Hand tighten until snug.
IMPORTANT: Do not touch the bulb with bare hands use a cloth or glove.

Your fixture is now assembled and ready to use.
Enjoy!



Thank you for purchasing a Quoizel product.

Need assistance with parts or assembly? Call Quoizel customer service at 1-631-273-2700
or visit us on-line at www. quozel. com

Assembly Instruction Sheet #IS-PY8601AN For Style PY8601AN

CAUTION FOR BULB REPLACING

- A. When replace bulb, turn off power and allow lamp to cool. For safety purpose, wear gloves and eye protection.
- B. If bulb is scratched or cracked, DO NOT use the lamp to avoid breakage during use or installation.
- C. Use only in fixtures rated for lamps wattage and voltage.
- D. Lamp operate under high pressure generating intense heat. Prevent contact with liquid and combustible materials.

Thank you for purchasing a Quoizel product.

**Need assistance with parts or assembly? Call Quoizel customer service at 1-631-273-2700
or visit us on-line at www.quoizel.com**