



## ASSEMBLY AND INSTALLATION

### INSTRUCTION

*Please read carefully and save this instruction, as you may need them at a later date.*

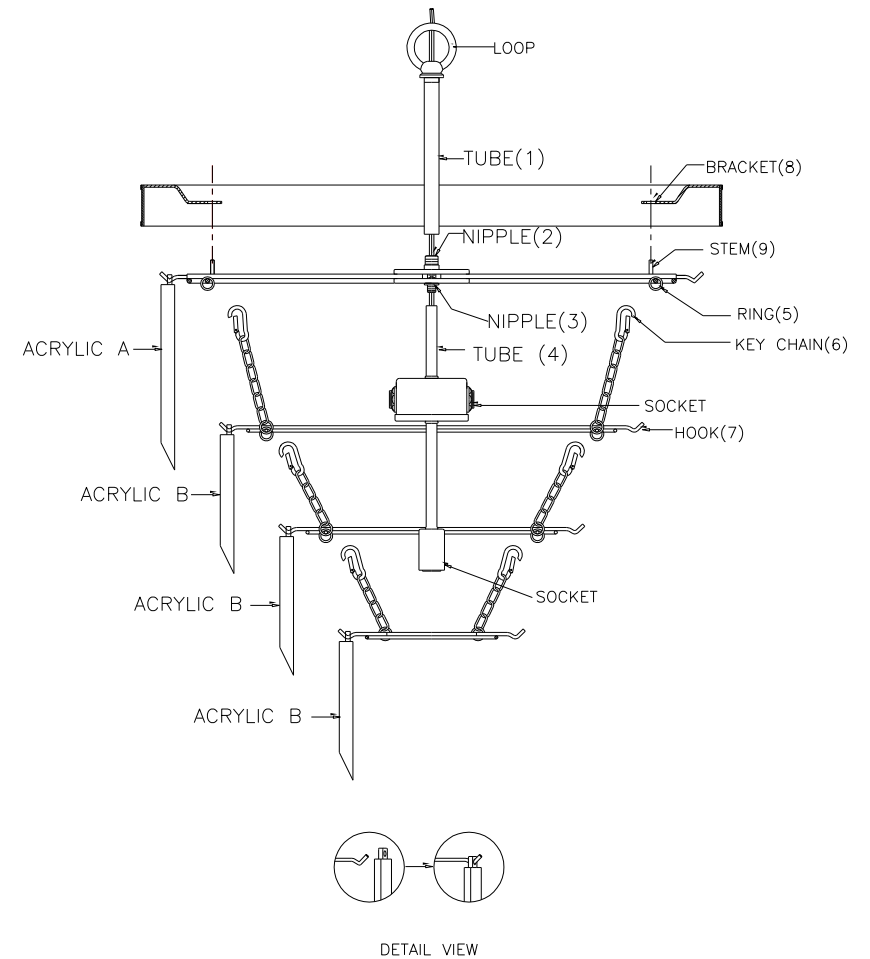
### CAUTION

Turn off the main power at the circuit breaker before installing the fixture, in order to prevent possible shock. If you are unfamiliar with proper electrical wiring connections, please consult of a qualified electrician before installing

#### Installing Step:

Remove the fixture and the mounting package from the box and make sure that no parts missing in the box.

1. Thread the Tube (1) onto Nipple(2) tightly.
2. Thread the Tube(4) onto the Nipple(3), then put down the Bracket(8) on the Stem(9).
3. Open all Key Chain(6) to hook the Ring(5).
4. Install bulbs: (Bulbs not including in the package)  
(Please don't exceed the maximum capacity that recommended on the Sockets)
5. Put all Acrylic A & B into the Hook(7), like the "DETAIL VIEW"



INSTALLATION IS NOW COMPLETED.

**1-9800-6-28**