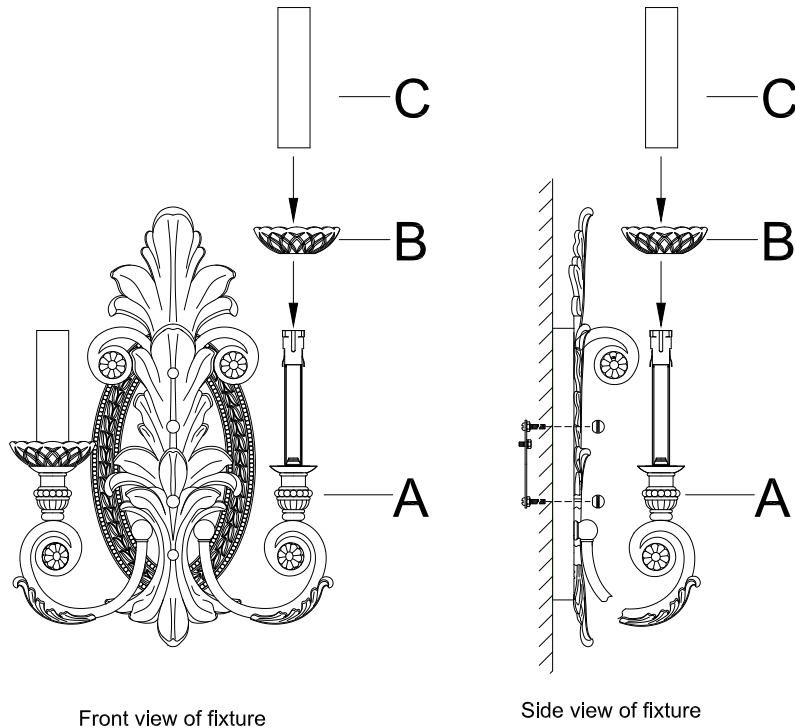




ASSEMBLY INSTRUCTIONS

ITEM NO.: 9-3415-2-56



B → A → C

1. Carefully unpack and identify all parts referring to illustration for parts identification.
2. Turn power to the installation point **OFF**.
3. Place glass plate (B) then candle sleeve (C) over each socket.
4. Install proper bulbs to each socket referring to the markings and labels of the fixture for maximum wattage.
5. Restore power to the installation point **ON**. Remain this sheet for future reference.