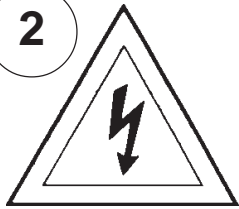


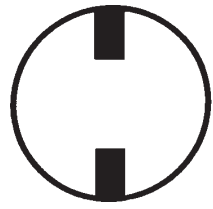
## Instructions for electrician STEPS 2 - 21

### WARNING:

2

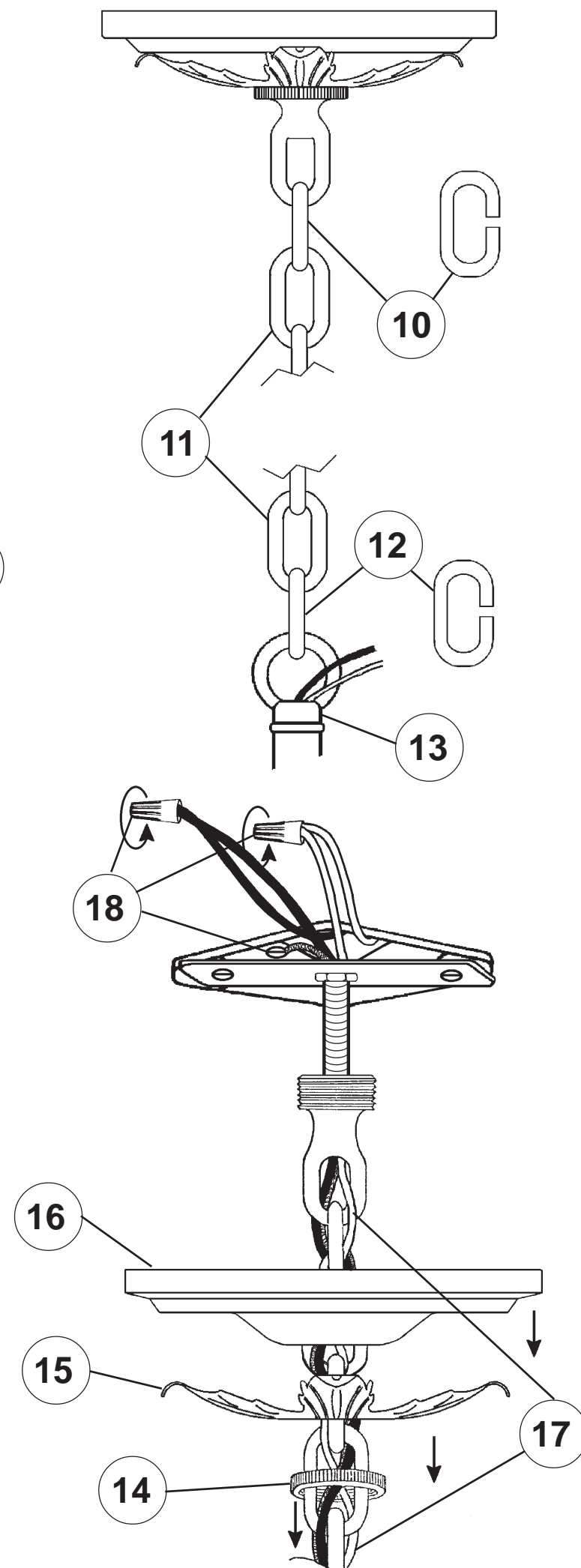
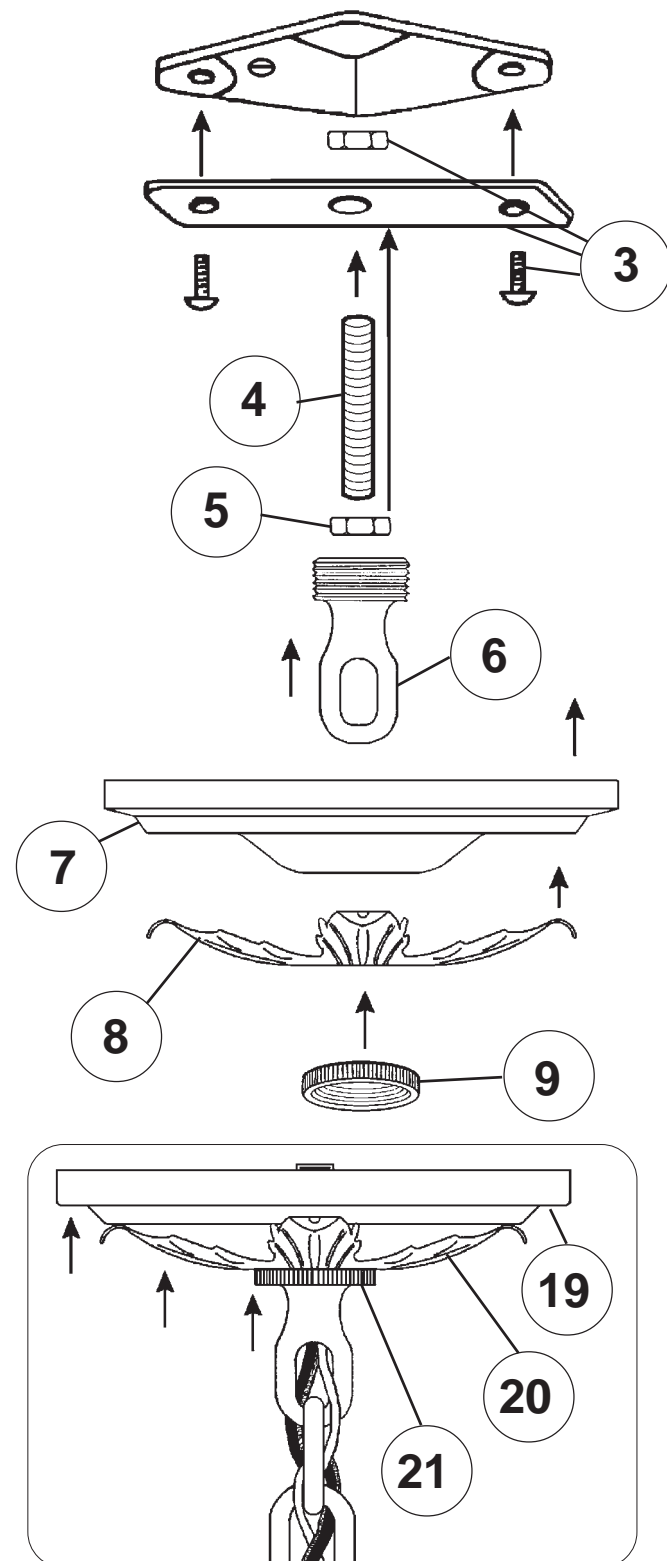


Electrical Danger



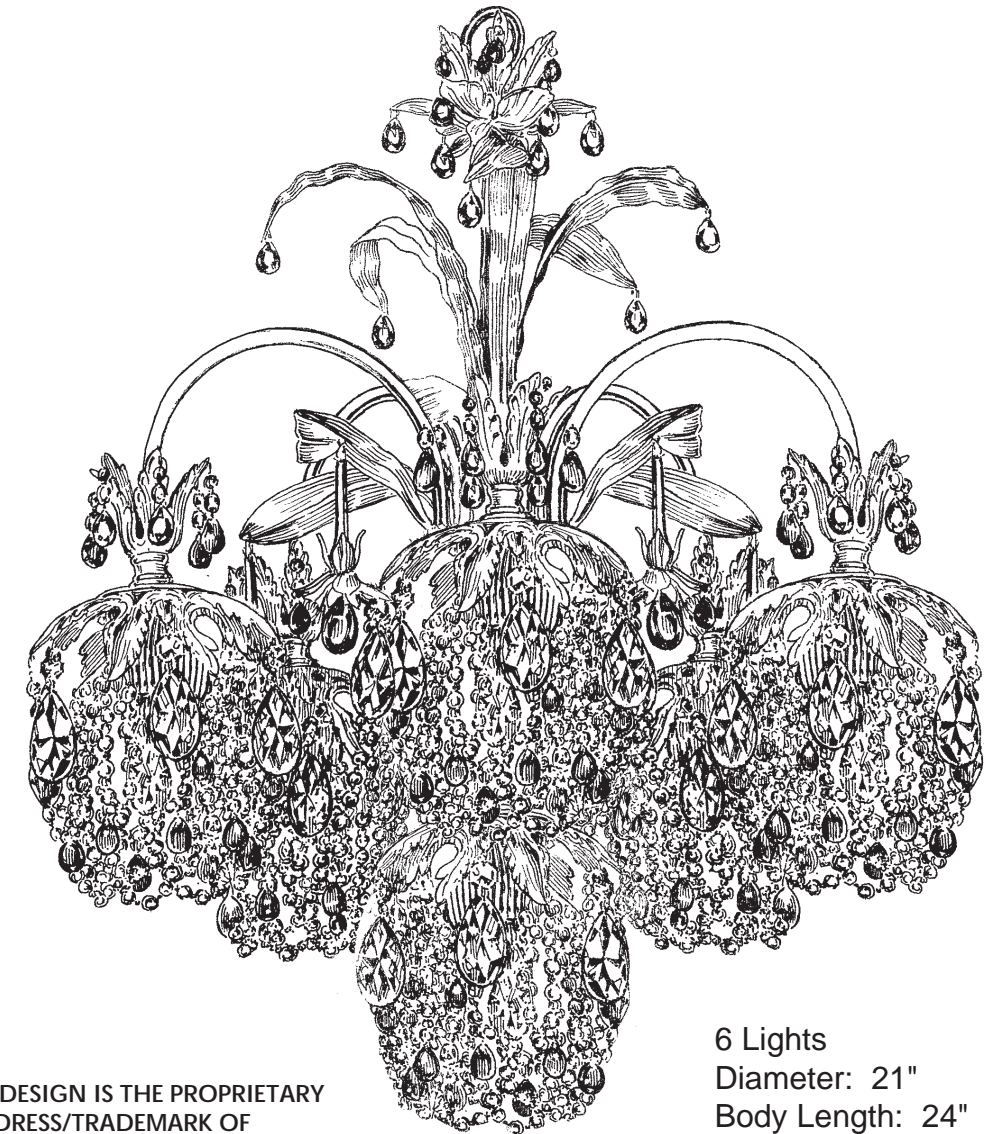
Turn Power Off

All electrical components must be installed by a licensed electrician in accordance with the National Electric Code and the appropriate local electrical codes.



## CHANDELIER 1266- \_\_\_\_\_ TRIM DIAGRAM

(Finish Option) (Trim Option)



THIS DESIGN IS THE PROPRIETARY  
TRADE DRESS/TRADEMARK OF  
SCHONBEK WORLDWIDE LIGHTING INC.

6 Lights  
Diameter: 21"  
Body Length: 24"  
Hanging Weight: 12 lbs.

# SCHONBEK®

See diagram on back page  
Follow steps in exact order  
Save this trim diagram for future reference

### IMPORTANT

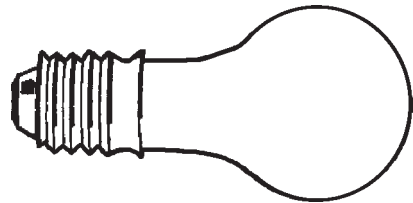
1

Person who opens carton should record the following information for future service.

CODE # \_\_\_\_\_ Four-digit number on outside of carton.  
PACKER # \_\_\_\_\_ See crystal package label.  
ORDER # \_\_\_\_\_ See crystal package label.

SCHONBEK IS A WORLD LEADER IN CHANDELIER DESIGN. PATENTS INCLUDE:  
#D504,191

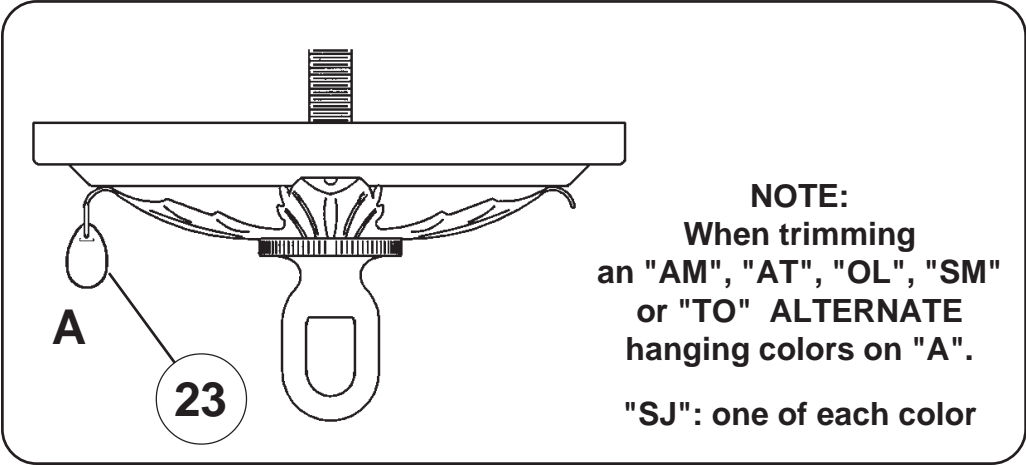
Instructions for crystal trimming  
STEPS 22 - 34



6 - Type A  
25 Watts Recommended (supplied)  
60 Watts Max

Install bulbs and test fixture  
BEFORE trimming.

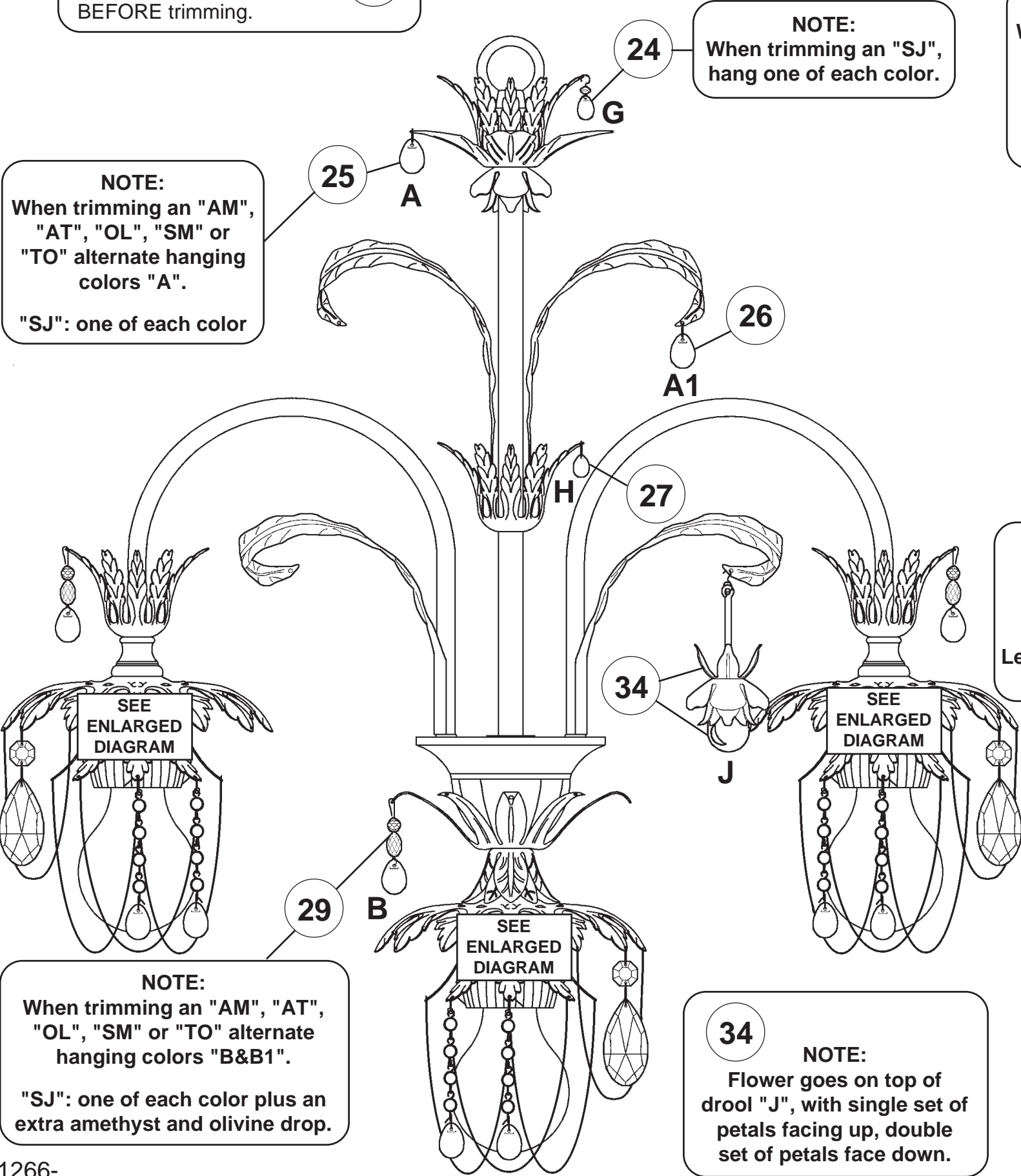
22



NOTE:  
When trimming  
an "AM", "AT", "OL", "SM"  
or "TO" ALTERNATE  
hanging colors on "A".  
  
"SJ": one of each color

NOTE:  
Pinch connector  
shut to prevent  
crystal from  
falling off!

NOTE:  
When trimming  
Soft Jewel Tones™ "SJ", for best  
appearance, alternate hanging trim  
so that similar colors are NOT next  
to each other.



NOTE:  
When trimming an "AM",  
"AT", "OL", "SM" or  
"TO" alternate hanging  
colors "A".  
  
"SJ": one of each color

NOTE:  
When trimming an "SJ",  
hang one of each color.

NOTE:  
When trimming an "AM",  
"AT", "OL", "SM" or  
"TO" alternate hanging  
colors on "B and B1".  
  
"SJ": one of each color

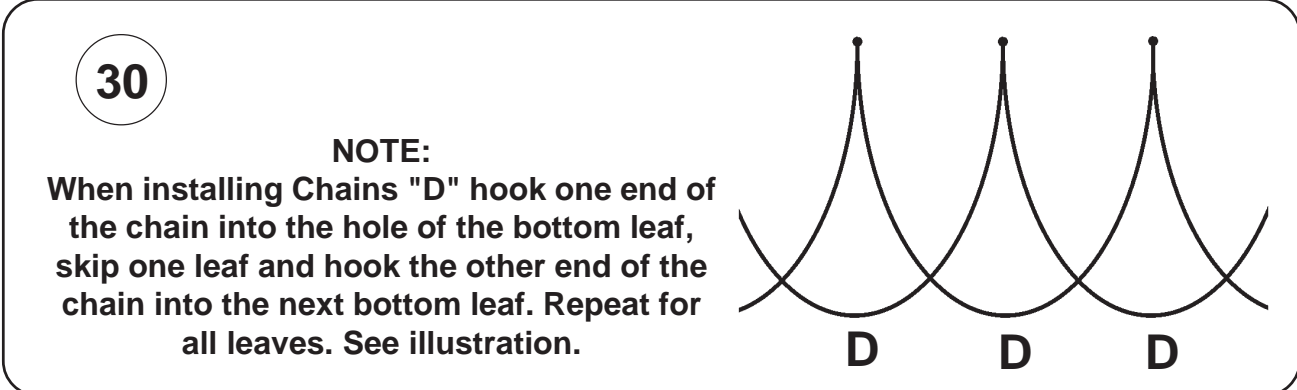
32 & 33  
NOTE:  
Alternate hanging  
Letters "E1" and "F" from  
every other top leaf!



NOTE:  
When trimming  
an "AM", "AT", "OL",  
"SM" or "TO" alternate  
hanging colors on  
"C & C1".  
  
"SJ": one of each color  
plus an extra amethyst  
and olivine drop.

NOTE:  
When trimming an "AM", "AT",  
"OL", "SM" or "TO" alternate  
hanging colors "B&B1".  
  
"SJ": one of each color plus an  
extra amethyst and olivine drop.

34  
NOTE:  
Flower goes on top of  
drool "J", with single set of  
petals facing up, double  
set of petals face down.



NOTE:  
When installing Chains "D" hook one end of  
the chain into the hole of the bottom leaf,  
skip one leaf and hook the other end of the  
chain into the next bottom leaf. Repeat for  
all leaves. See illustration.