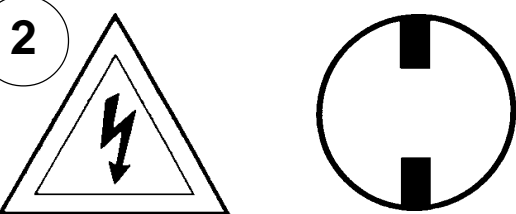


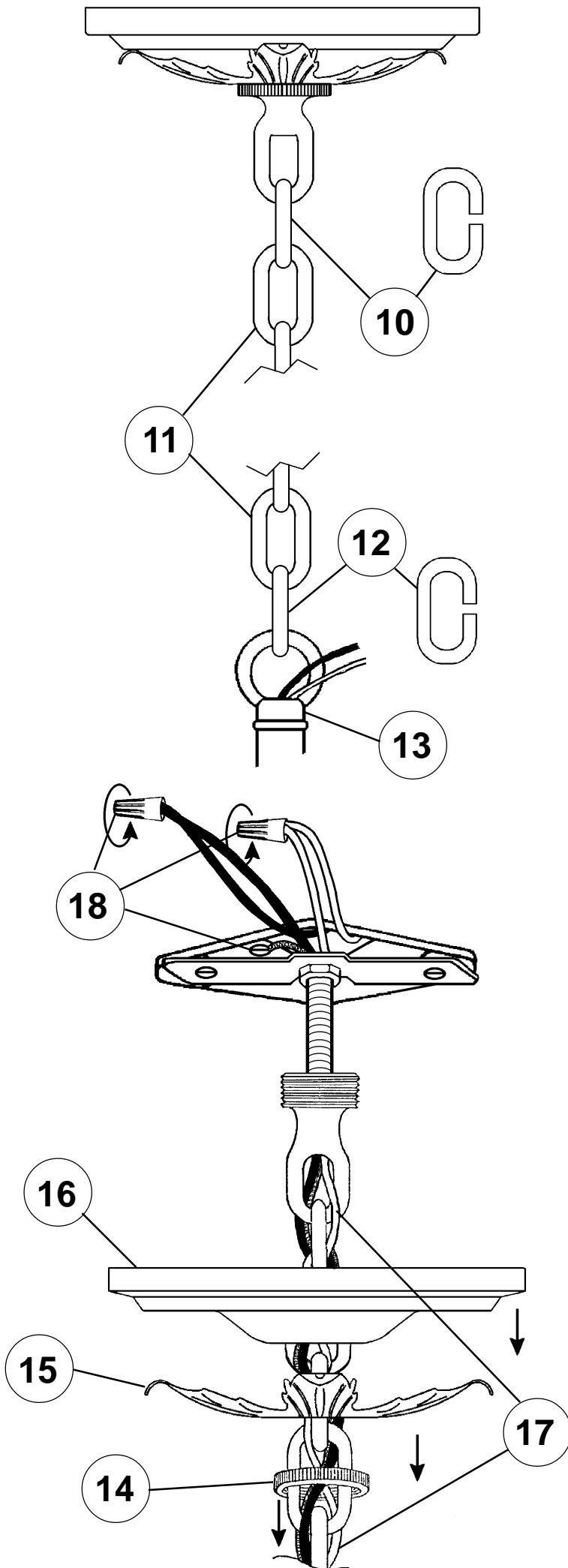
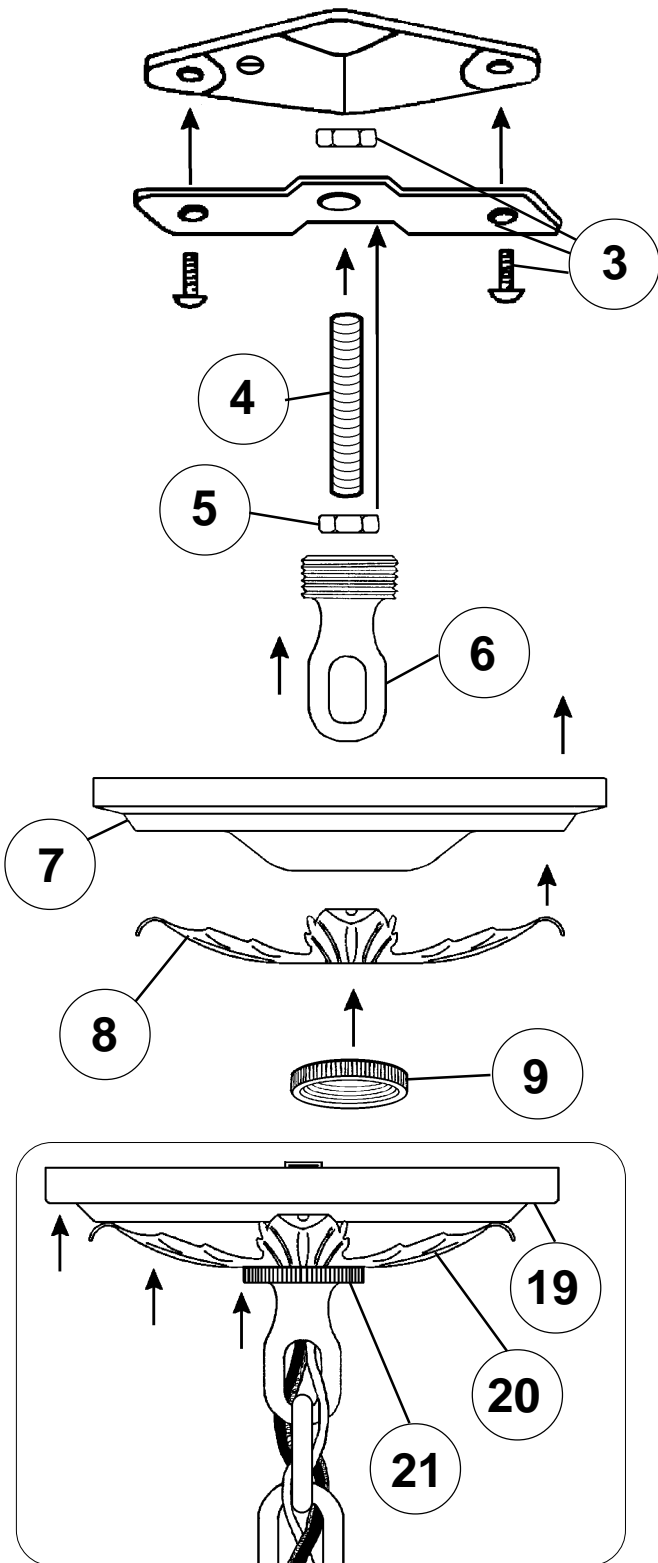
Instructions for electrician
STEPS 2 - 21

WARNING:



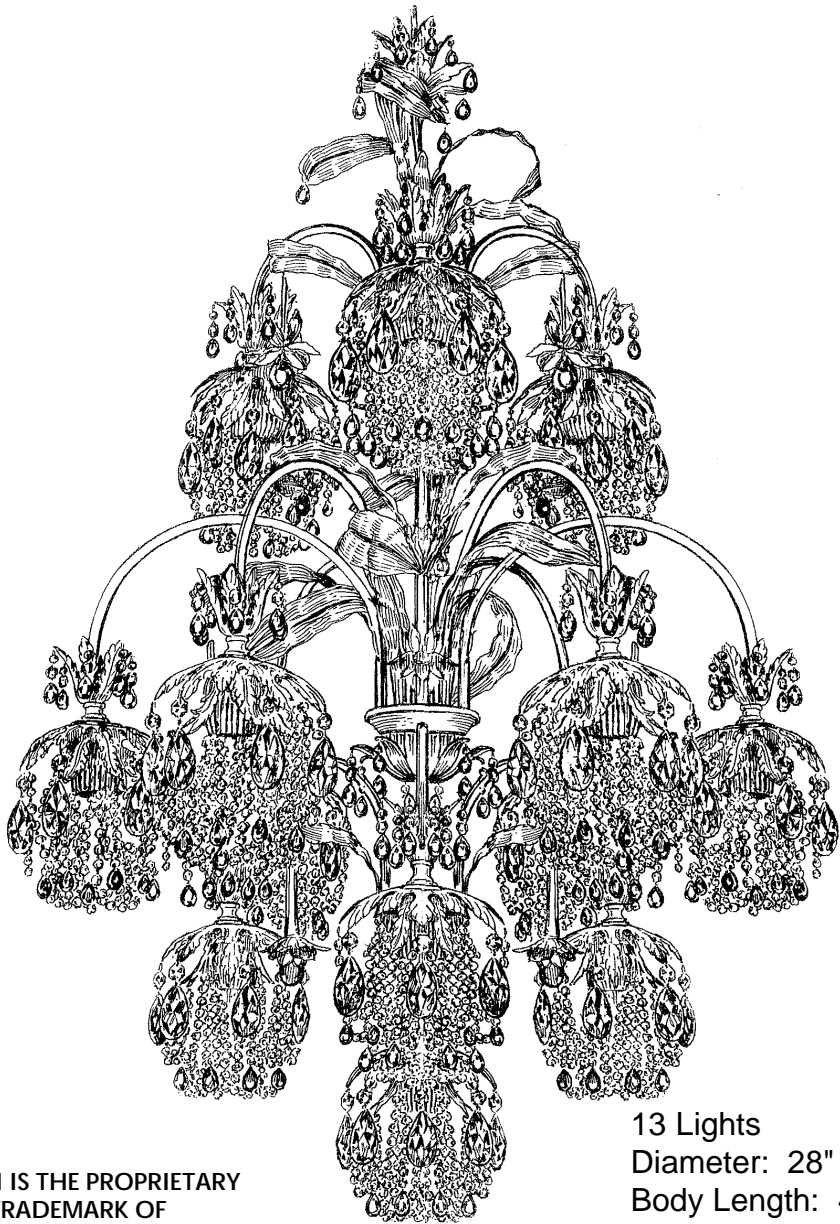
Electrical Danger Turn Power Off

All electrical components must be installed by a licensed electrician in accordance with the National Electric Code and the appropriate local electrical codes.



CHANDELIER 1270- _____ TRIM DIAGRAM

(Finish Option) (Trim Option)



13 Lights
Diameter: 28"
Body Length: 42-1/2"
Hanging Weight: 27 lbs.

THIS DESIGN IS THE PROPRIETARY
TRADE DRESS/TRADEMARK OF
SCHONBEK WORLDWIDE LIGHTING INC.

SCHONBEK®

See diagram on back page
Follow steps in exact order
Save this trim diagram for future reference

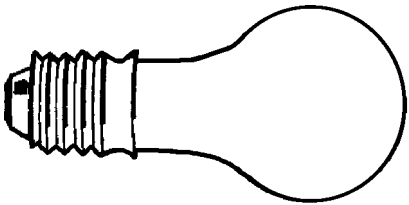
IMPORTANT

1 Person who opens carton should record the following information for future service.

CODE # _____ Four-digit number on outside of carton.
PACKER # _____ See crystal package label.
ORDER # _____ See crystal package label.

SCHONBEK IS A WORLD LEADER IN CHANDELIER DESIGN. PATENTS INCLUDE:
#D504,191

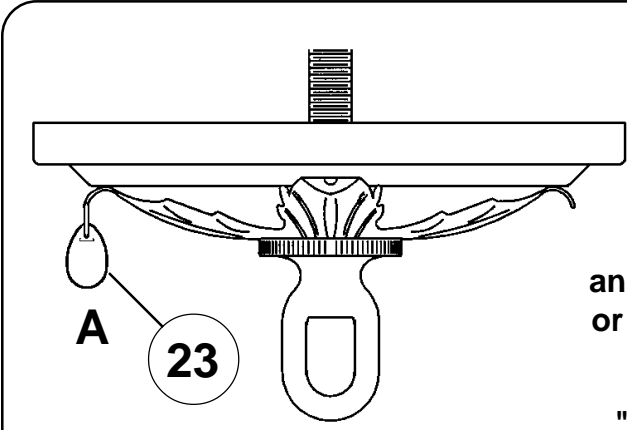
Instructions for crystal trimming
STEPS 22 - 39



13 - Type A
25 Watts Recommended (supplied)
60 Watts Max

Install bulbs and test fixture
BEFORE trimming.

22



NOTE:
When trimming
an "AM", "AT", "OL", "SM"
or "TO" alternate hanging
colors "A&A1".

"SJ": one of each color

NOTE:
Pinch connector
shut to prevent
crystal from
falling off!

NOTE:
When trimming
Soft Jewel Tones™ "SJ", for best
appearance, alternate hanging trim
so that similar colors are NOT next
to each other.

NOTE:
When trimming an "AM", "AT",
"OL", "SM" or "TO" alternate
hanging colors "A&A1".

"SJ": one of each color

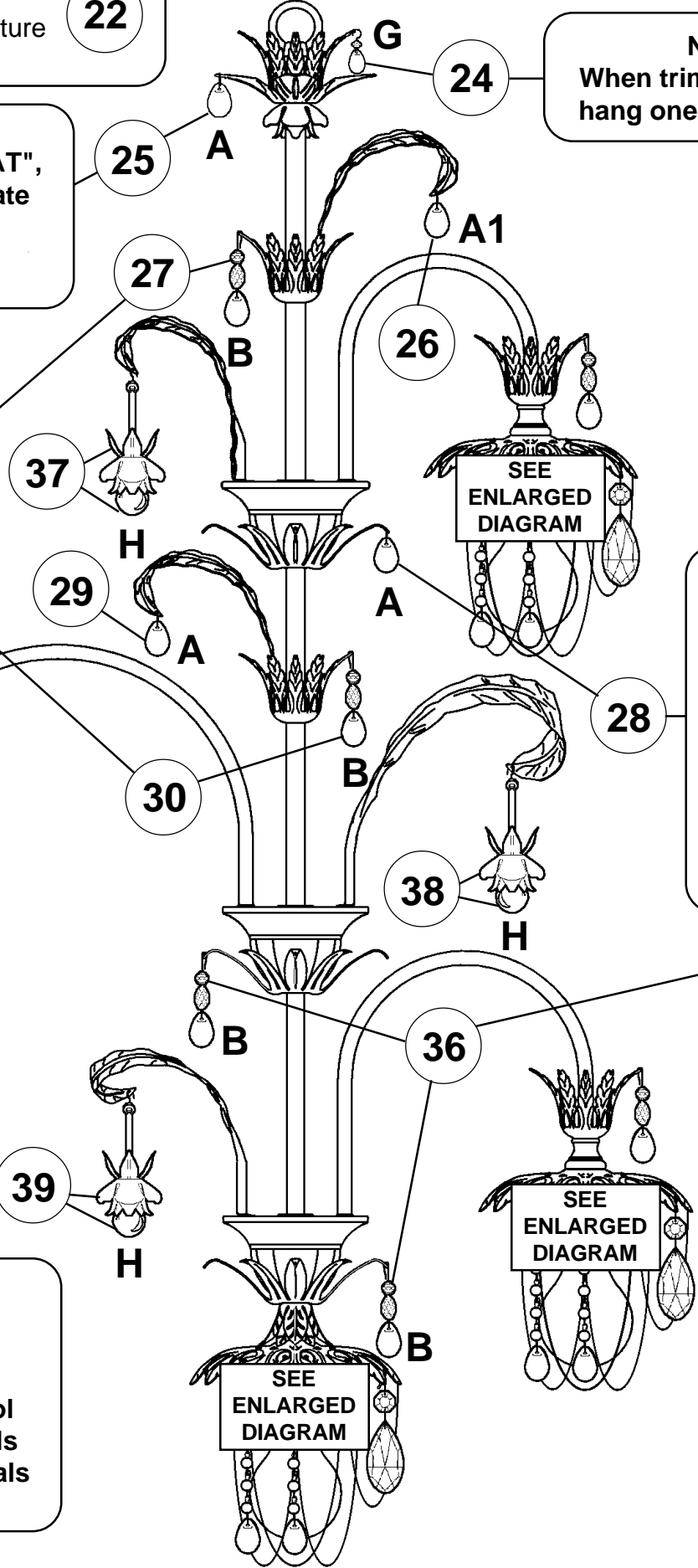
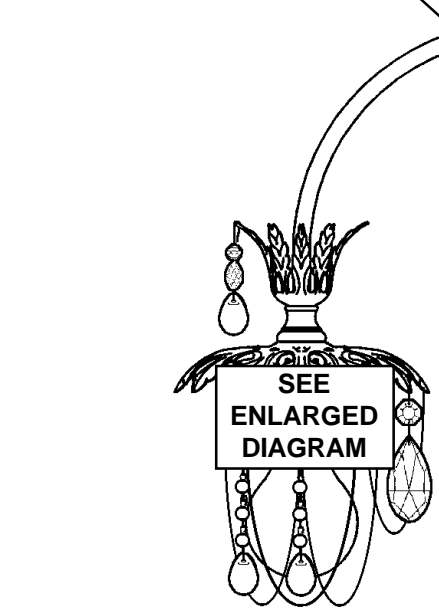
NOTE:
When trimming an "AM",
"AT", "OL", "SM" or "TO"
alternate hanging colors
"B&B1".

"SJ": one of each color

NOTE:
When trimming an "SJ"
hang one of each color.

NOTE:
When trimming an "AM",
"AT", "OL", "SM" or "TO"
alternate hanging colors on
"B & B1".

"SJ": one of each color



NOTE:
When trimming an
"AM", "AT", "OL",
"SM" or "TO"
alternate hanging
colors "A&A1".

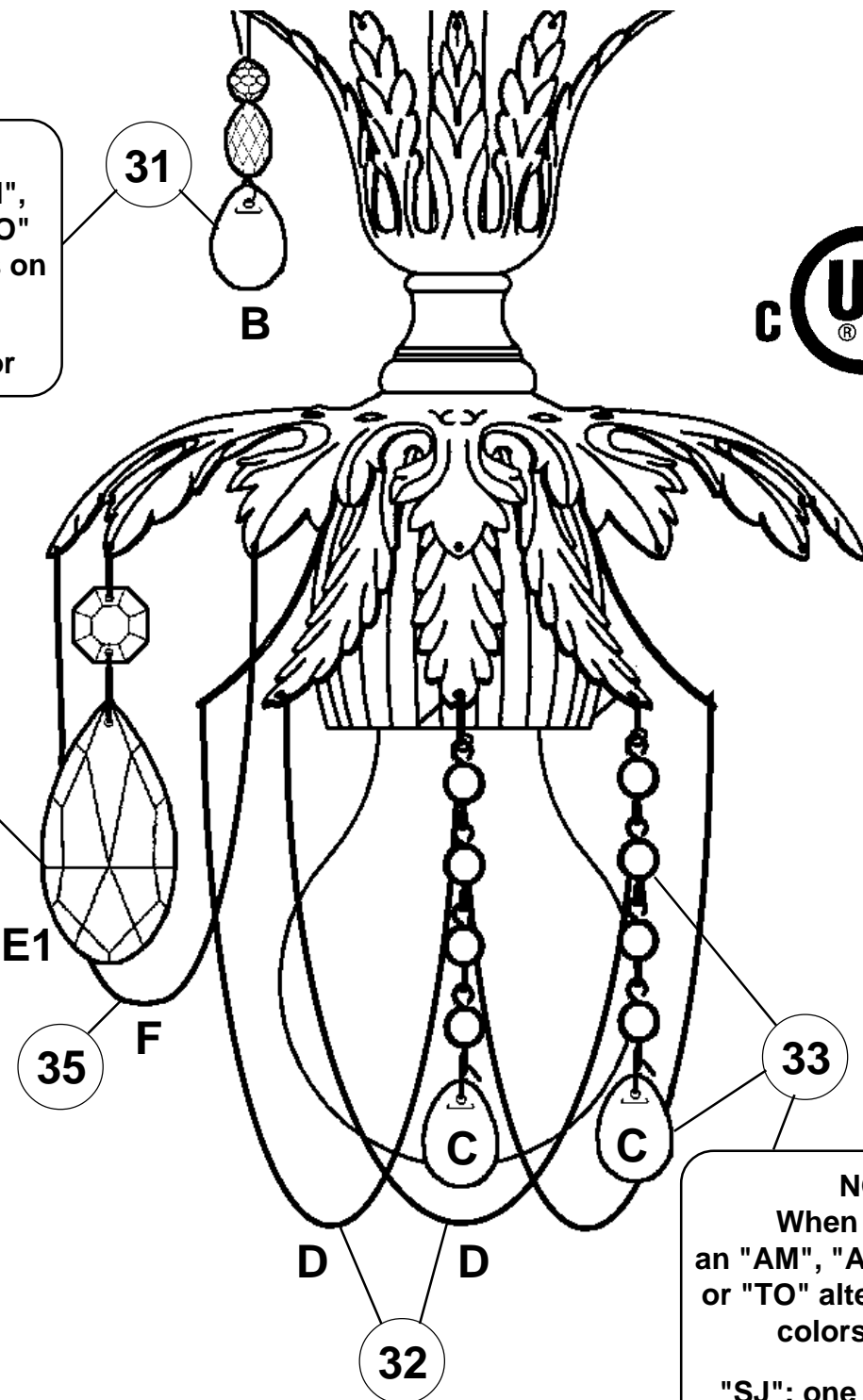
"SJ": one of each
color plus an extra
amethyst and
olivine drop.

34 & 35

NOTE:
Alternate hanging
Letters "E1" and "F"
from every other top
leaf!

NOTE:
When trimming an "AM",
"AT", "OL", "SM" or "TO"
alternate hanging colors
"B&B1".

"SJ": one of each color
plus an extra amethyst and
olivine drop per tier.



NOTE:
When trimming
an "AM", "AT", "OL", "SM"
or "TO" alternate hanging
colors "C&C1".

"SJ": one of each color
plus an extra amethyst and
olivine drop per tier.

37, 38 & 39

NOTE:
Flower goes on top of drool
"H", with single set of petals
facing up, double set of petals
face down.

32

NOTE:
When installing Chains "D" hook one end
of the chain into the hole of the bottom
leaf, skip one leaf and hook the other end
of the chain into the next bottom leaf.
Repeat for all leaves. See illustration.

