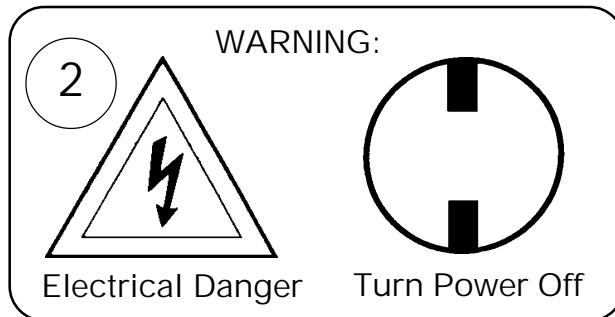
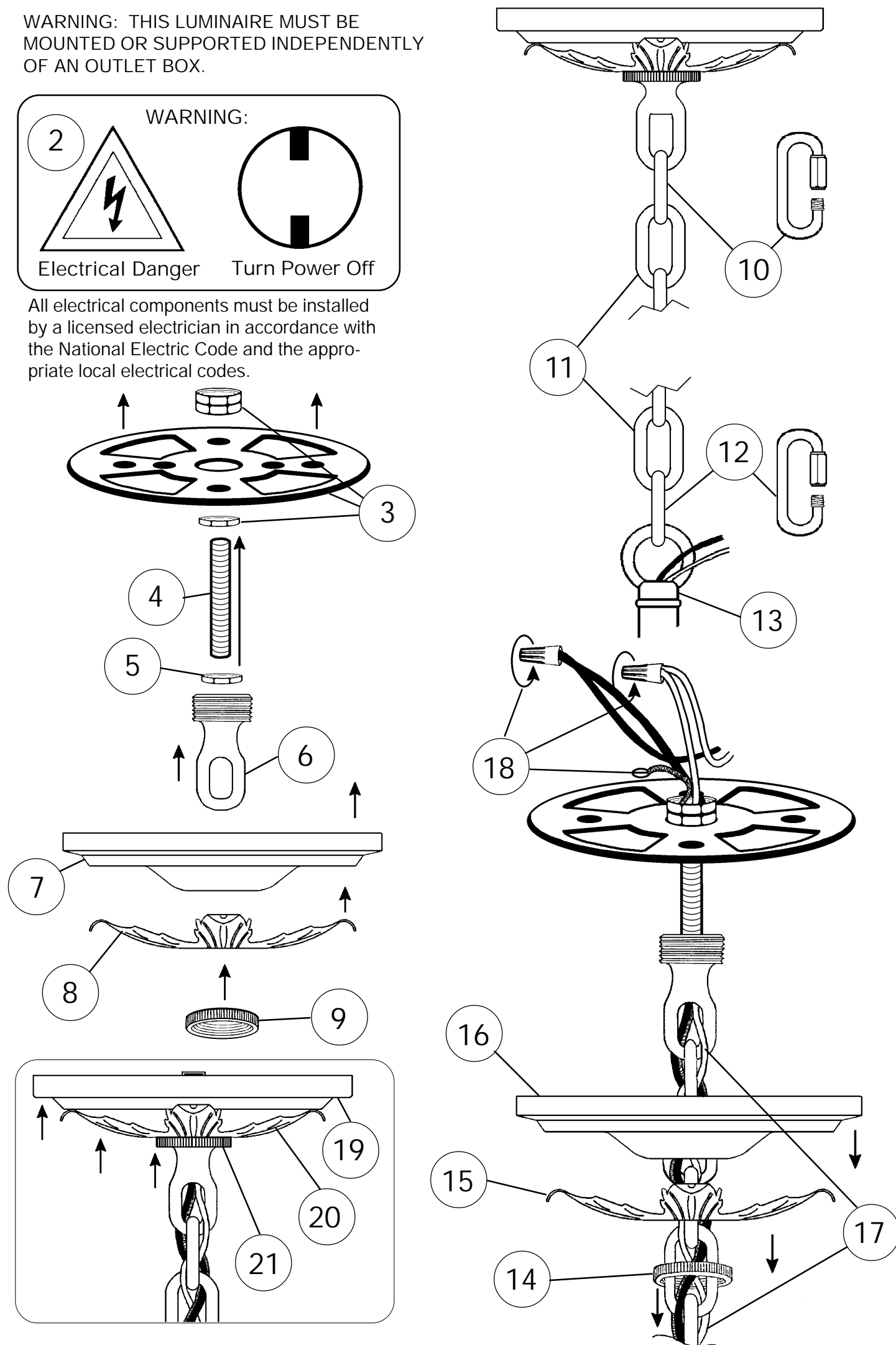


Instructions for electrician STEPS 2 - 21

WARNING: THIS LUMINAIRE MUST BE MOUNTED OR SUPPORTED INDEPENDENTLY OF AN OUTLET BOX.



All electrical components must be installed by a licensed electrician in accordance with the National Electric Code and the appropriate local electrical codes.



CHANDELIER 1275- _____ TRIM DIAGRAM

(Finish Option) (Trim Option)



THIS DESIGN IS THE PROPRIETARY TRADE DRESS/TRADE MARK OF SCHONBEK WORLDWIDE LIGHTING INC.

25 Lights
Diameter: 34"
Body Length: 58"
Hanging Weight: 50 lbs.

SCHONBEK®

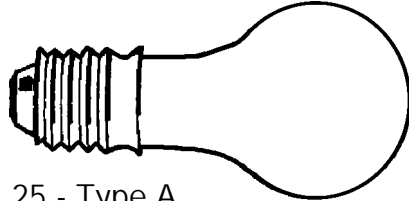
See diagram on back page
Follow steps in exact order
Save this trim diagram for future reference

1 IMPORTANT
Person who opens carton should record the following information for future service.

CODE # _____	Four-digit number on outside of carton.
PACKER # _____	See crystal package label.
ORDER # _____	See crystal package label.

SCHONBEK IS A WORLD LEADER IN CHANDELIER DESIGN. PATENTS INCLUDE:
#D504,191

Instructions for crystal trimming
STEPS 22 - 37



25 - Type A
25 Watts Recommended
(supplied)
60 Watts Max

22

Install bulbs and test fixture
BEFORE trimming.

NOTE:
When trimming an "AM", "AT",
"OL", "SM" or "TO" alternate
hanging colors "A&A1".
"SJ": one of each color

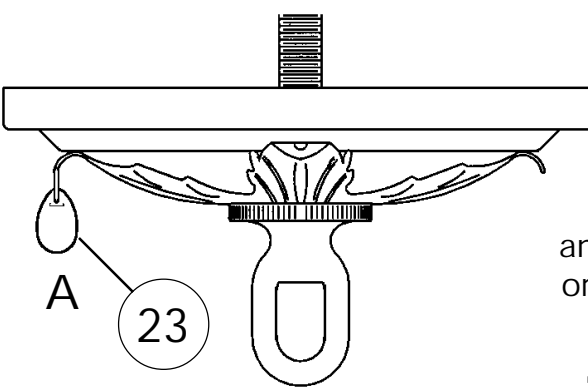
NOTE:
When trimming an "AM", "AT",
"OL", "SM" or "TO" alternate
hanging colors "B&B1".
"SJ": one of each color

Alternate B & H
NOTE: "B" must hang
over lower arm

NOTE:
When trimming an
"AM", "AT", "OL",
"SM" or "TO"
alternate hanging
colors "B&B1".
"SJ"- hang 4 colors:
topaz, amethyst,
olivine and rose.

NOTE:
Flower goes on top of
drool "H", with single set of
petals facing up, double set of
petals face down.

37



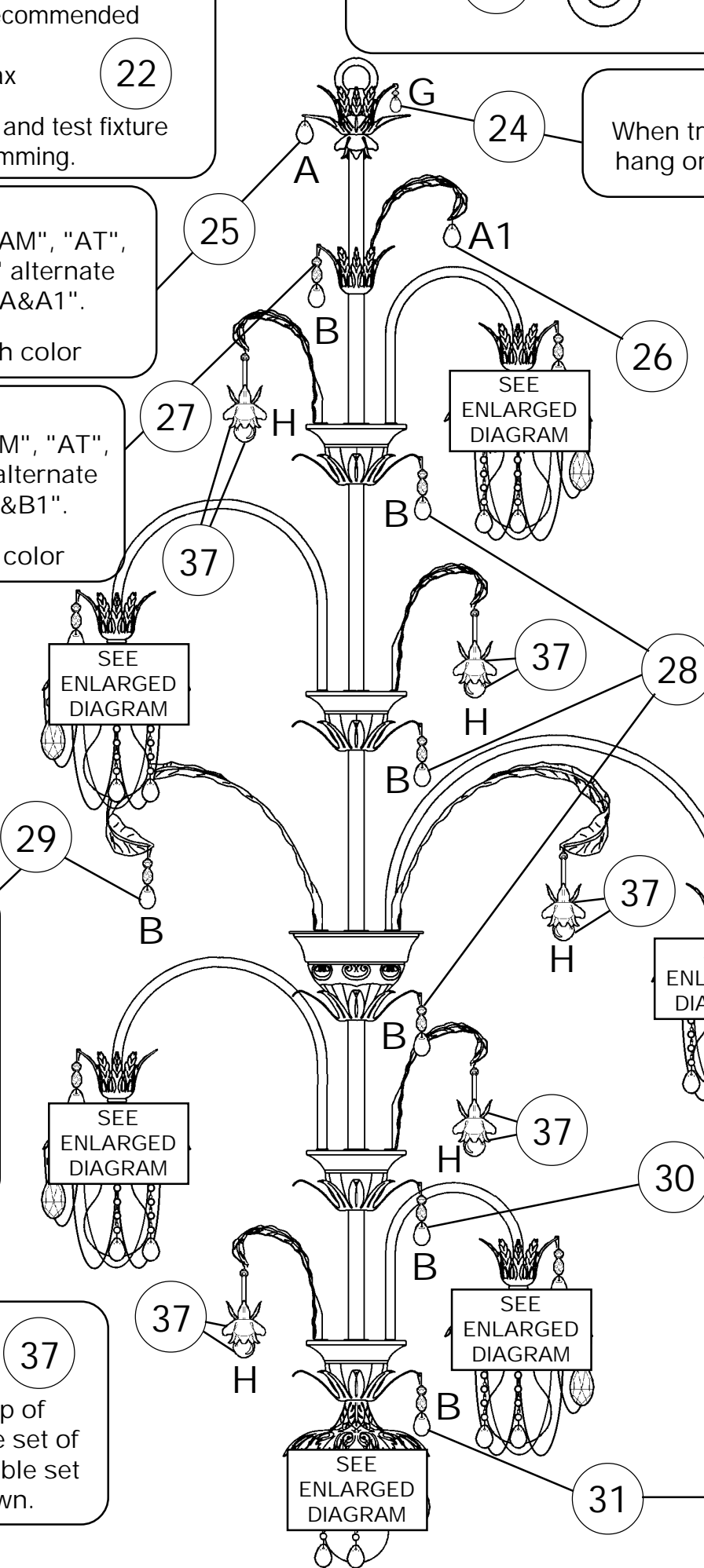
NOTE:
When trimming
an "AM", "AT", "OL", "SM"
or "TO" alternate hanging
colors "A&A1".
"SJ": one of each color

NOTE:
When trimming an "SJ":
hang one of each color.

NOTE:
When trimming an "AM",
"AT", "OL", "SM" or "TO"
alternate hanging colors on
"B and B1".
"SJ": one of each color

NOTE:
Pinch connector
shut to prevent
crystal from
falling off!

NOTE:
When trimming
Soft Jewel Tones™ "SJ", for best
appearance, alternate hanging trim
so that similar colors are NOT next
to each other.

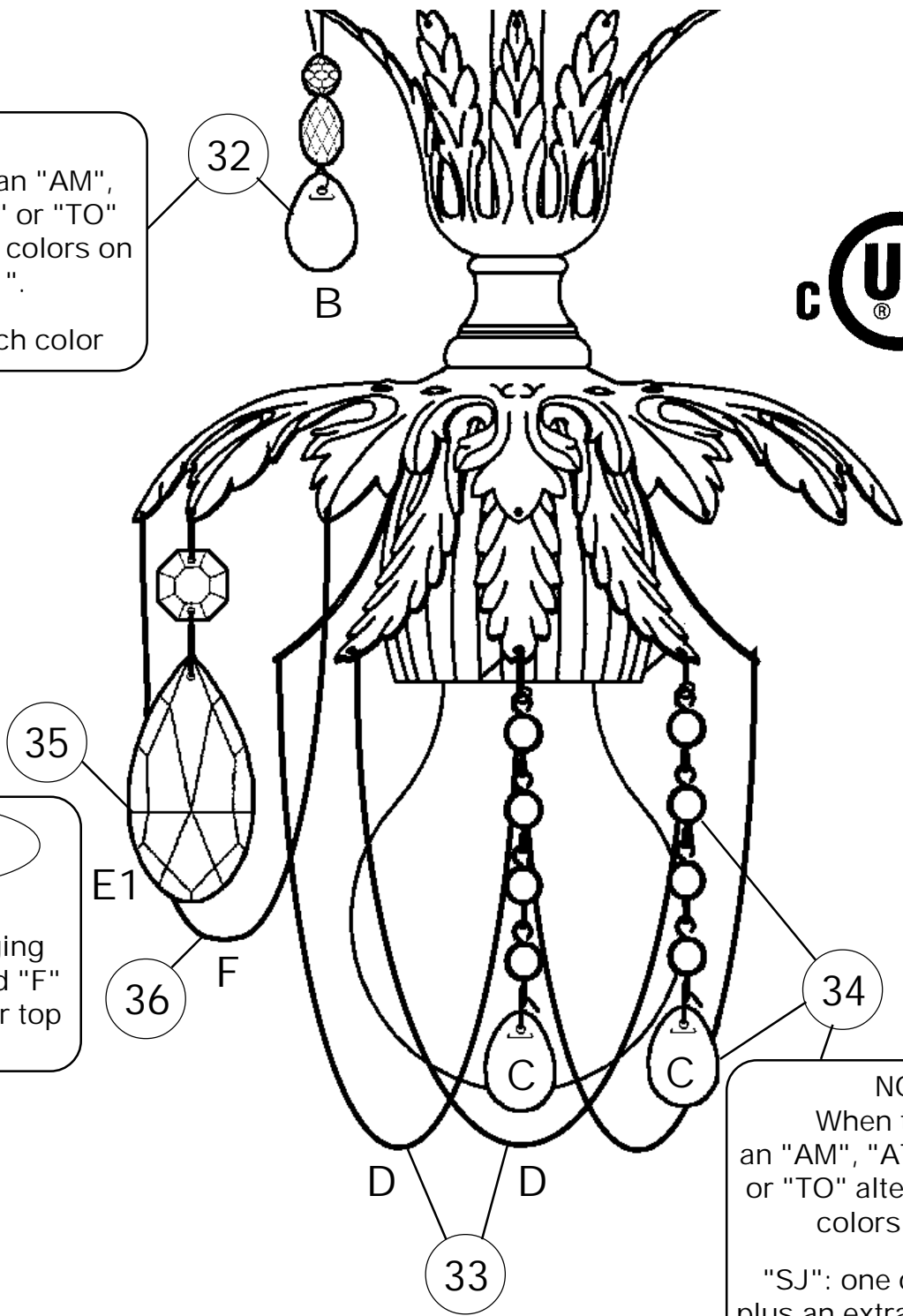


NOTE:
When trimming an
"AM", "AT", "OL",
"SM" or "TO"
alternate hanging
colors "B&B1".
"SJ": one of each
color plus an extra
amethyst and
olivine drop.

35 & 36
NOTE:
Alternate hanging
Letters "E1" and "F"
from every other top
leaf!

NOTE:
When trimming an "AM",
"AT", "OL", "SM" or "TO"
alternate hanging colors
"B&B1".
"SJ": one of each color
plus an extra amethyst and
olivine drop per tier.

NOTE:
When trimming an "AM",
"AT", "OL", "SM" or "TO"
alternate hanging colors
"B&B1".
"SJ": one of each color
plus an extra amethyst
and olivine drop.



NOTE:
When trimming
an "AM", "AT", "OL", "SM"
or "TO" alternate hanging
colors "C&C1".
"SJ": one of each color
plus an extra amethyst and
olivine drop per tier.

33
NOTE:
When installing Chains "D" hook
one end of the chain into the hole of
the bottom leaf, skip one leaf and
hook the other end of the chain into
the next bottom leaf. Repeat for all
leaves. See illustration.

