

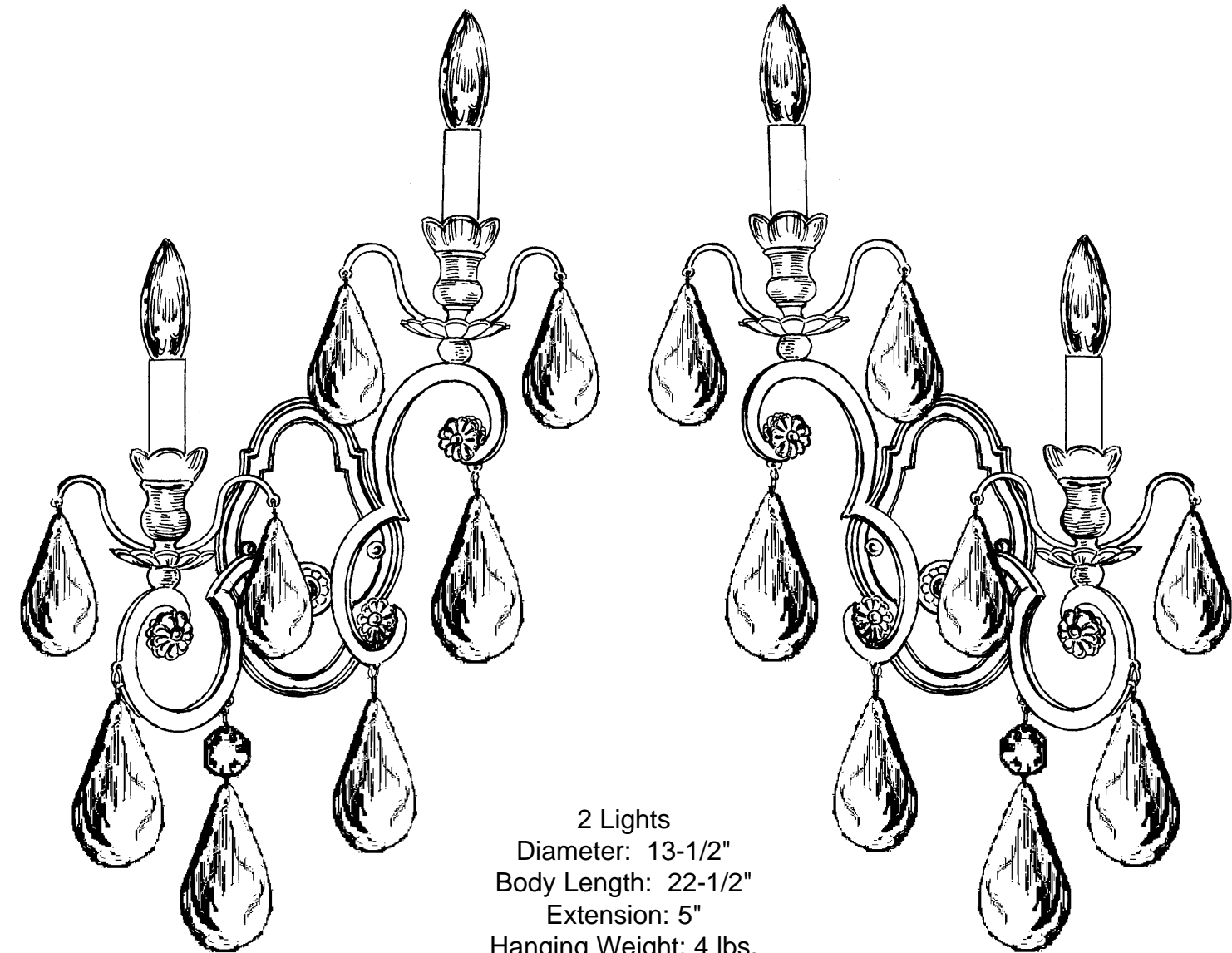
SCHONBEK®

SCHONBEK IS A WORLD LEADER IN CHANDELIER DESIGN. PATENTS INCLUDE:
#D292,620, #D335,362, #D335,546, #D335,716, #D335,720, #D336,537, #D338,082, #D389,264,
#D338,278, #D339,879, #D345,815, #D373,441, #D374,102, #D374,103, #D374,498, #D382,077,
#D393,325, #D397,495, #D397,494, #D403,101, #D435,686, #D454,973, #D454,974, #D455,224,
#D456,940, #D463,602S, #D463,603S, #D464,769S, #D468,480, #2,651,806, #5,104,082, #5,109,325,
#5,116,009, #5,144,541, #5,205,644, #5,222,805, #5,241,460, #5,255,173, #5,258,900, #5,285,364,
#5,404,285, #5,460,269, #5,567,046, #5,567,468, #5,573,330, #5,577,838, #5,588,744, #5,873,652,
#5,906,430, #5,921,668 & #6,241,370B1

CHANDELIER 2457- ____ (RT) TRIM DIAGRAM
(Finish Option)

CHANDELIER 2458- ____ (LT) TRIM DIAGRAM
(Finish Option)

THIS DESIGN IS THE PROPRIETARY
TRADE DRESS/TRADEMARK OF
SCHONBEK WORLDWIDE LIGHTING INC.



2458 (LT)

2457 (RT)

2 Lights
Diameter: 13-1/2"
Body Length: 22-1/2"
Extension: 5"
Hanging Weight: 4 lbs.

SCHONBEK®

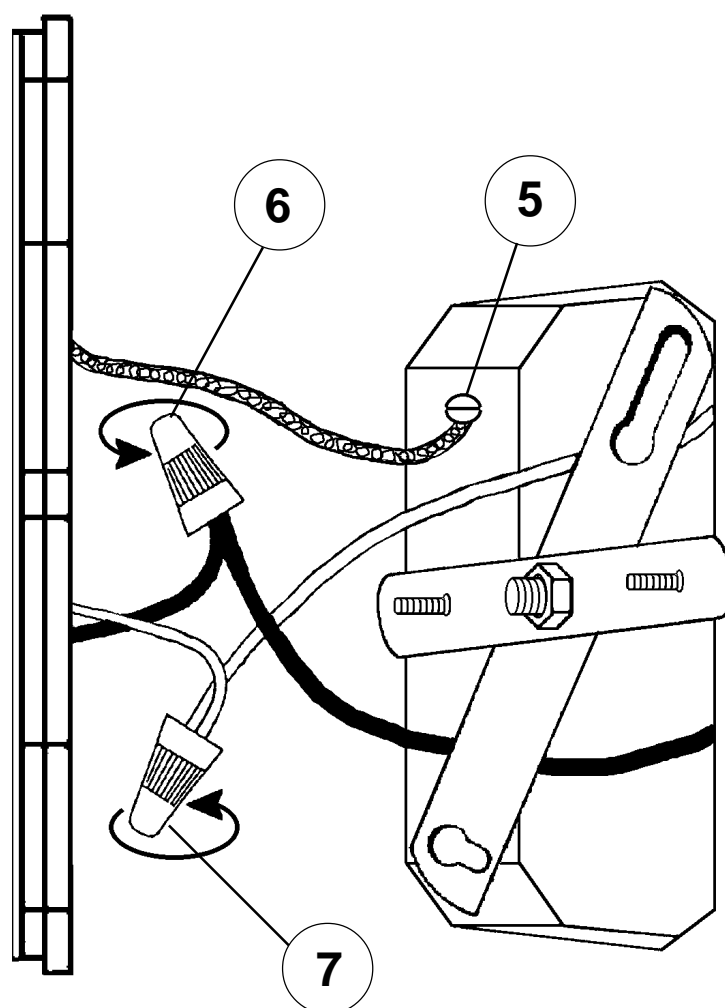
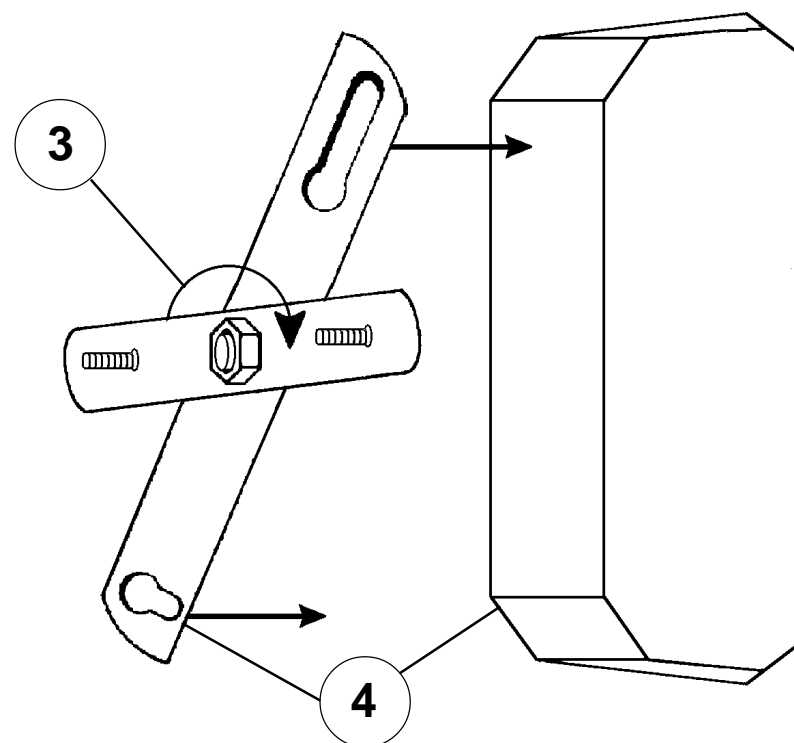
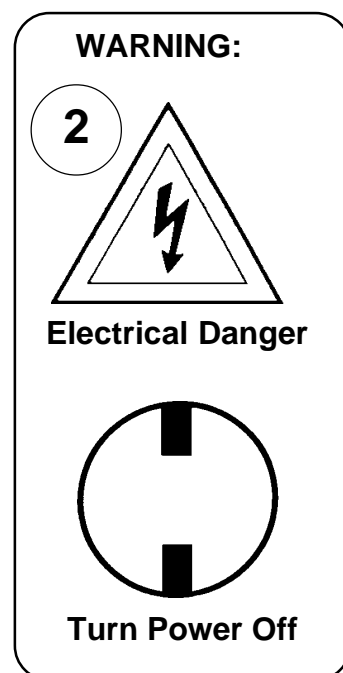
See diagram on back page
Follow steps in exact order
Save this trim diagram for future reference

1

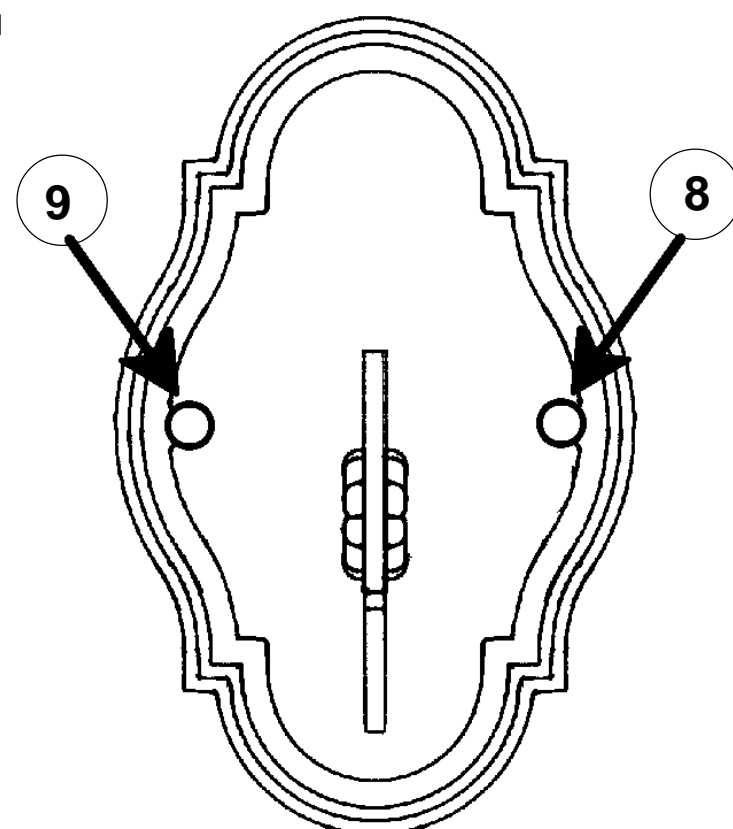
IMPORTANT
*Person who opens carton should record the
following information for future service.*

CODE # _____ Four-digit number on outside of carton.
PACKER # _____ See crystal package label.
ORDER # _____ See crystal package label.

Instructions for electrician STEPS 2 - 9



All electrical components must be installed by a licensed electrician in accordance with the National Electric Code and the appropriate local electrical codes.



MAINTENANCE:

Use a soft, lint - free cloth to clean the metal frame.

**UNDER NO CIRCUMSTANCES
SHOULD METAL POLISHES, CLEANERS,
ABRASIVES OR AEROSOL SPRAYS
BE USED.**

While the latest finishing techniques have been used on the metal frame, such finish cannot be unconditionally guaranteed. The main cause of deterioration, apart from certain atmospheric conditions, is improper cleaning.

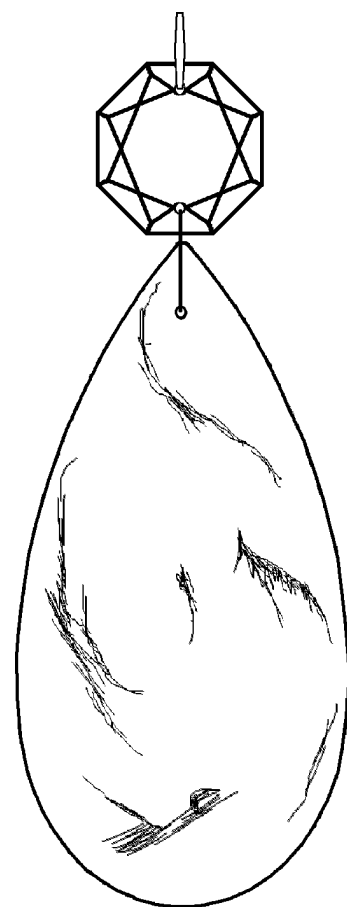
To clean the crystals, polish with a damp chamois.

You are cleaning delicate jewelry... Take the greatest care.

IMPORTANT:

Do not clean crystals in a dishwasher. The finish of the metal clips and hangers will be ruined and the crystals may be damaged.

CRYSTAL ID SHEET



A
3-1/2"
89mm



B
3-1/2"
89mm

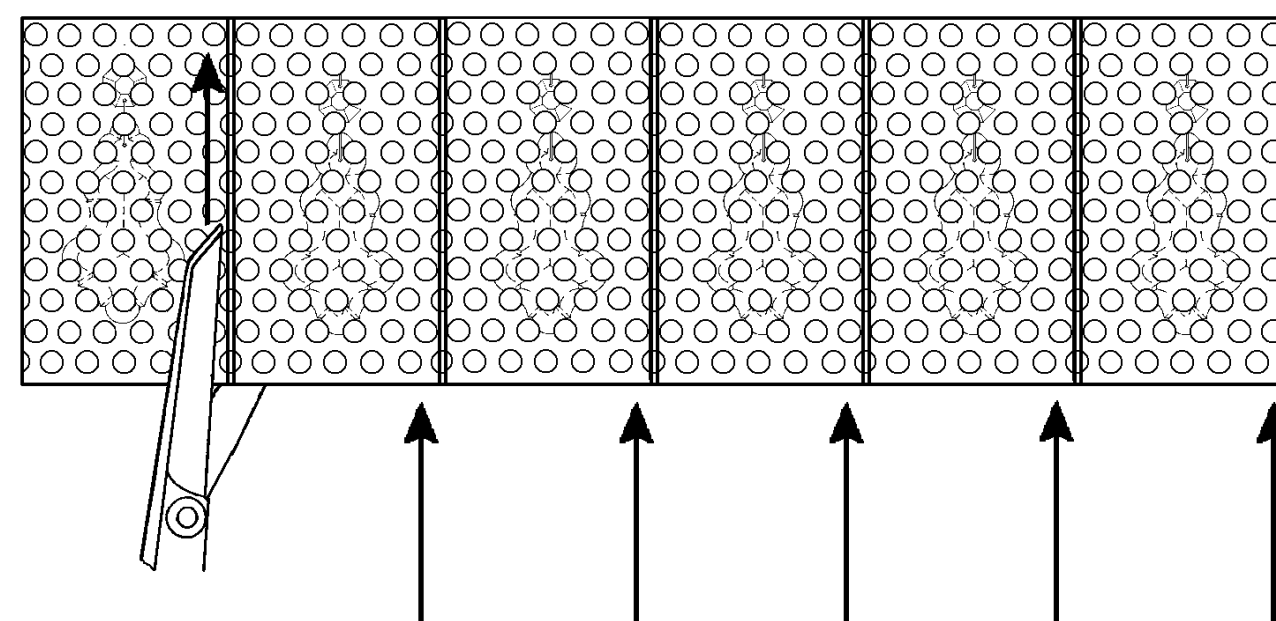


C
2-1/2"
63mm



D
3"
76mm

For easy removal of crystal from bubble pack, please cut along pouches on the inside of the seam. Gently remove crystal from the side of the pouch.



NOTE: Work on one crystal set at a time. Follow the black line from top to bottom according to the numbered steps on the trim diagram.

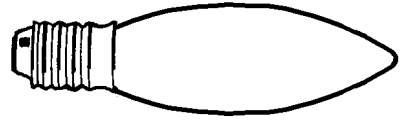
Instructions for crystal trimming

STEPS 10 - 17

**SPARE PARTS KIT
PROVIDED.**

FIXTURE INCLUDES:
Hanger Hardware
Trim
Frame

DOES NOT INCLUDE:
C10 - Light Bulbs



11

You will need 2 - C10
25 Watts Recommended
60 Watts Max

TRIMMING DIRECTIONS FOR: 2458 (LT)

**TRIMMING
DIRECTIONS
FOR:
2457 (RT)**

