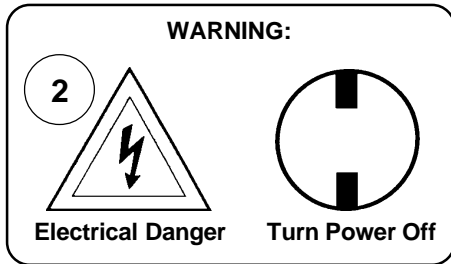
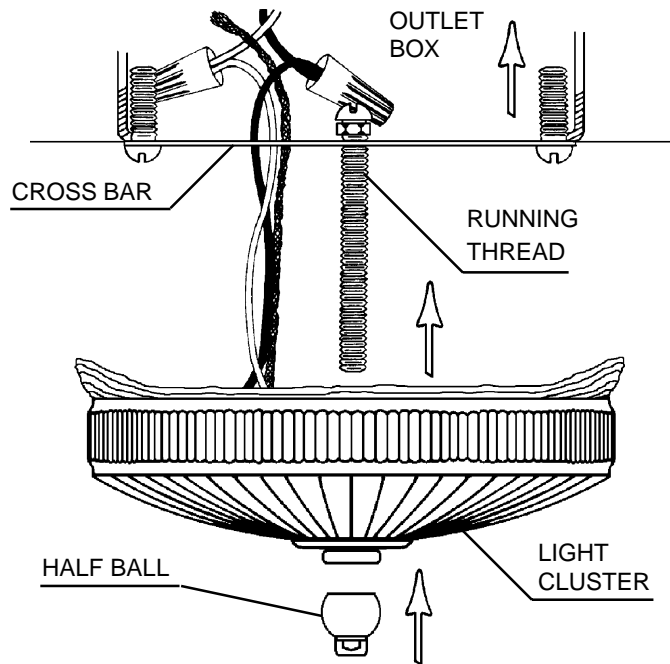


**Instructions for electrician
STEPS 2 - 5**



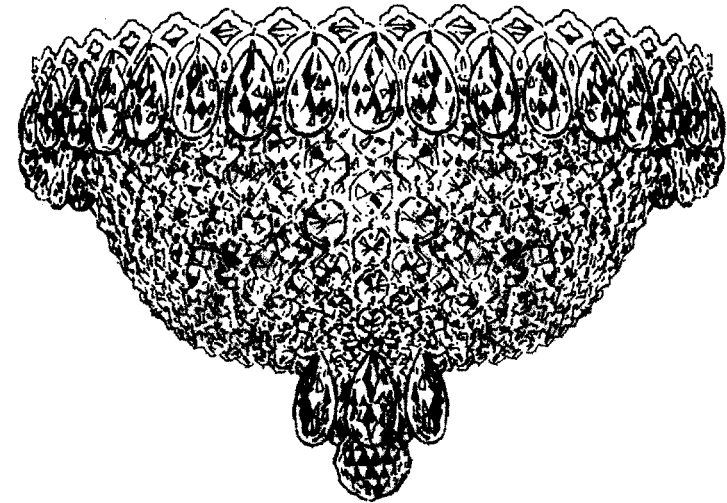
All electrical components must be installed by a licensed electrician in accordance with the National Electric Code and the appropriate local electrical codes.



- 3** Remove crossbar from light cluster and attach to outlet box.
- 4** Feed stem wires through crossbar and attach to power wires in outlet box. Fixture **MUST** be properly grounded.
- 5** Place light cluster over thread attached to crossbar and secure with round nut and half ball.

CHANDELIER 2616-___ TRIM DIAGRAM

(Finish Option)



THIS DESIGN IS THE PROPRIETARY TRADE DRESS/TRADEMARK OF SCHONBEK WORLDWIDE LIGHTING INC.

3 Lights
Diameter: 11"
Body Length: 7"
Hanging Weight: 4 lbs.

SCHONBEK®

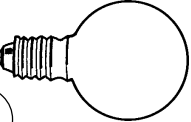
**See diagram on back page
Follow steps in exact order
Save this trim diagram for future reference**

1 **IMPORTANT**
Person who opens carton should record the following information for future service.
CODE # _____ Four-digit number on outside of carton.
PACKER # _____ See crystal package label.
ORDER # _____ See crystal package label.

SCHONBEK IS A WORLD LEADER IN CHANDELIER DESIGN. PATENTS INCLUDE:
#D5,222,805

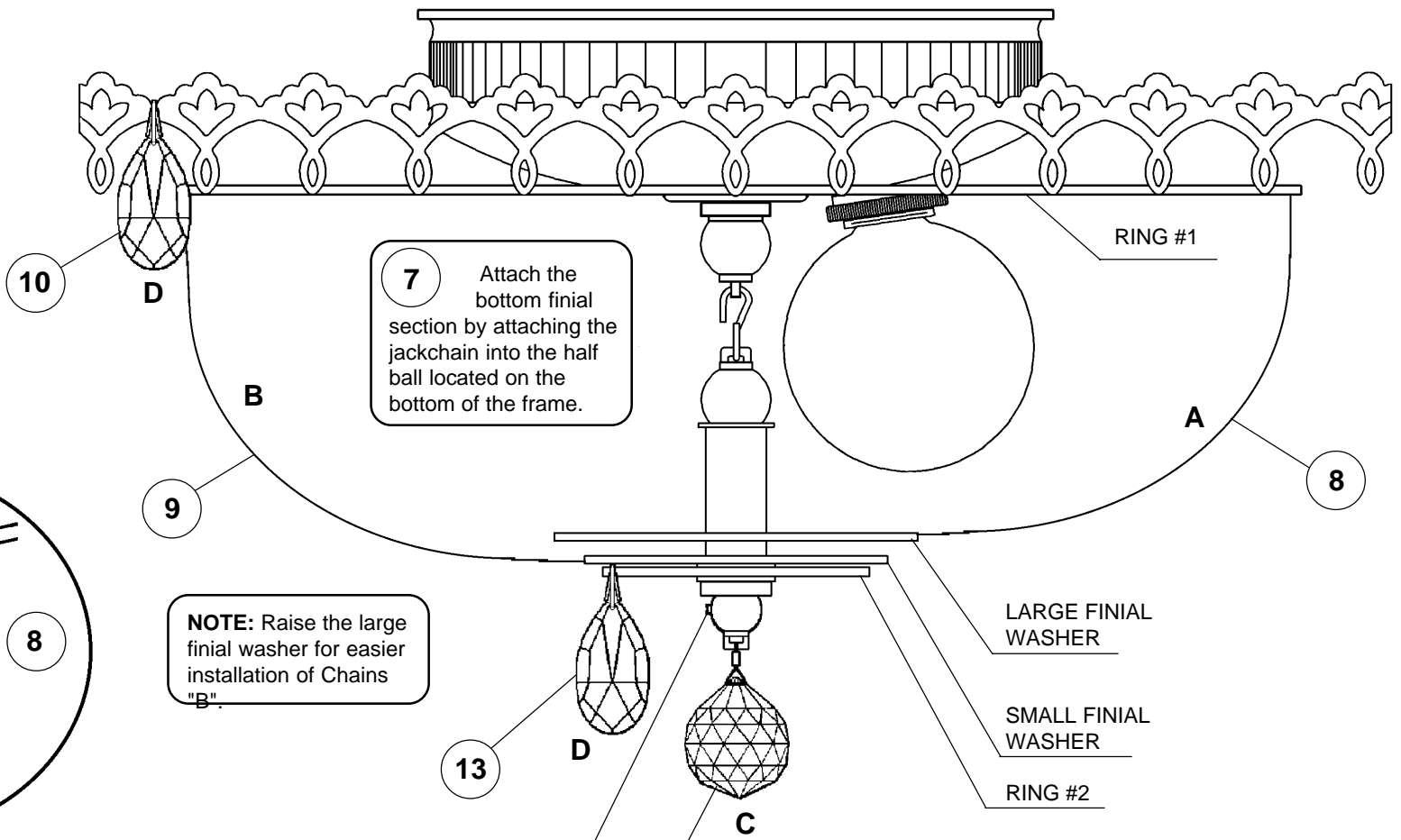
Instructions for crystal trimming
STEPS 6 - 13

6



You will need 3 - G16-1/2
 25 Watts Recommended
 40 Watts Max
 MIN 90°C SUPPLY
 CONDUCTORS

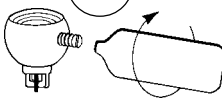
Install bulb and be sure to test fixture BEFORE trimming.



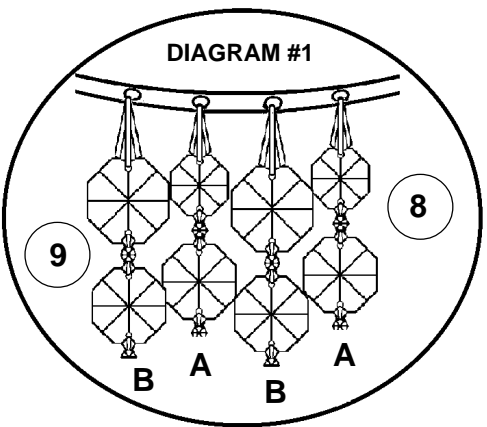
7 Attach the bottom finial section by attaching the jackchain into the half ball located on the bottom of the frame.

NOTE: Raise the large finial washer for easier installation of Chains "B".

12



Tighten With Tool Provided.



NOTE: Larger jewels at top and graduates to smaller jewels toward bottom of chain.

