

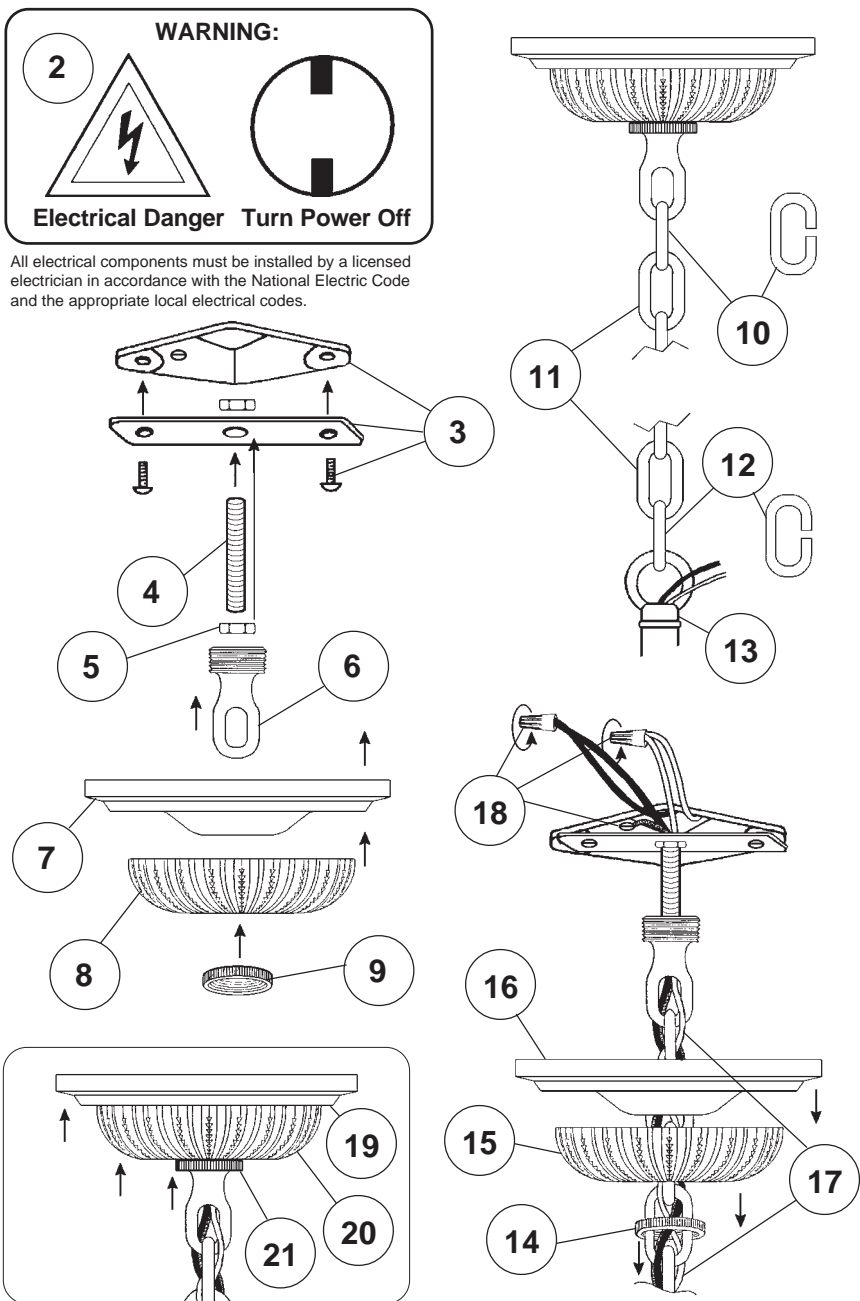
Instructions for electrician STEPS 2 - 21

WARNING:

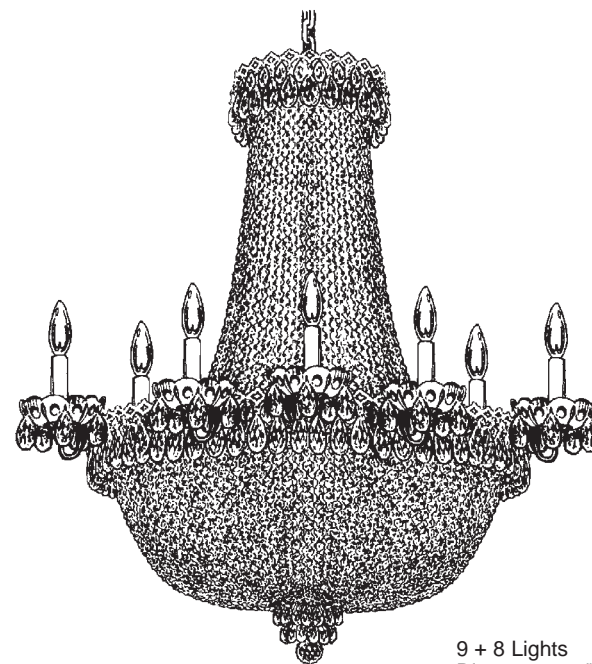


Electrical Danger Turn Power Off

All electrical components must be installed by a licensed electrician in accordance with the National Electric Code and the appropriate local electrical codes.



CHANDELIER 2621- ____ TRIM DIAGRAM (Finish Option)



THIS DESIGN IS THE PROPRIETARY
TRADE DRESS/TRADEMARK OF
SCHONBEK WORLDWIDE LIGHTING INC.

9 + 8 Lights
Diameter: 24"
Body Length: 26-1/2"
Hanging Weight: 20 lbs.

SCHONBEK®

See diagram on back page
Follow steps in exact order
Save this trim diagram for future reference

IMPORTANT

1 Person who opens carton should record the following information for future service.

CODE # _____ Four-digit number on outside of carton.
PACKER # _____ See crystal package label.
ORDER # _____ See crystal package label.

SCHONBEK IS A WORLD LEADER IN CHANDELIER DESIGN. PATENTS INCLUDE:
#D5,222,805

Instructions for crystal trimming STEPS 22 - 35



22

You will need 17 - C10
25 Watts Recommended
60 Watts Max

Install bulb and be sure
to test fixture **BEFORE**
trimming.

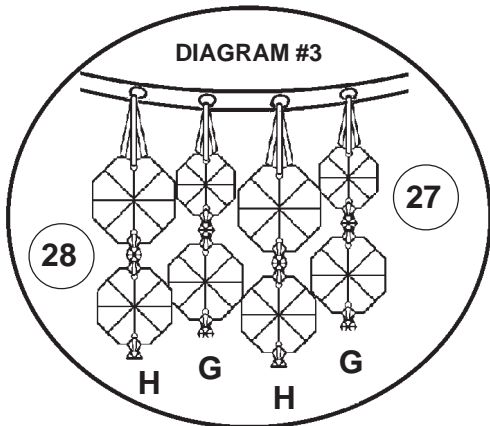
23

Attach the bottom
finial section by
attaching the jackchain
into the half ball located on
the bottom of the frame.

BOBECHÉ
#9763/1 = Gold Pins
#9763/2 = Silver Pins

NOTE: Hang drop "C"
from scallop, **NOT**
through the loop on the
gallery.

DIAGRAM #3



Large jewel at top and graduates to
a smaller jewel toward bottom of chain.

DIAGRAM #2

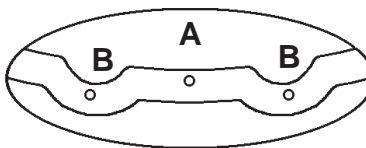
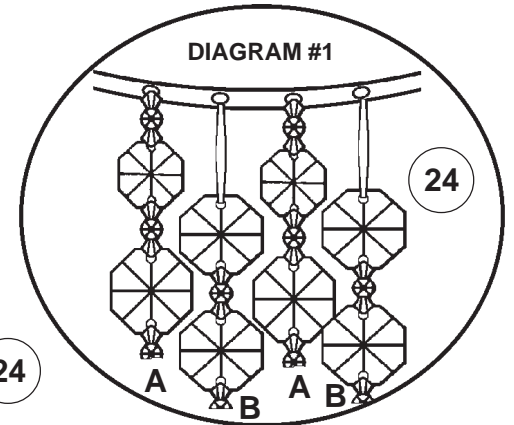
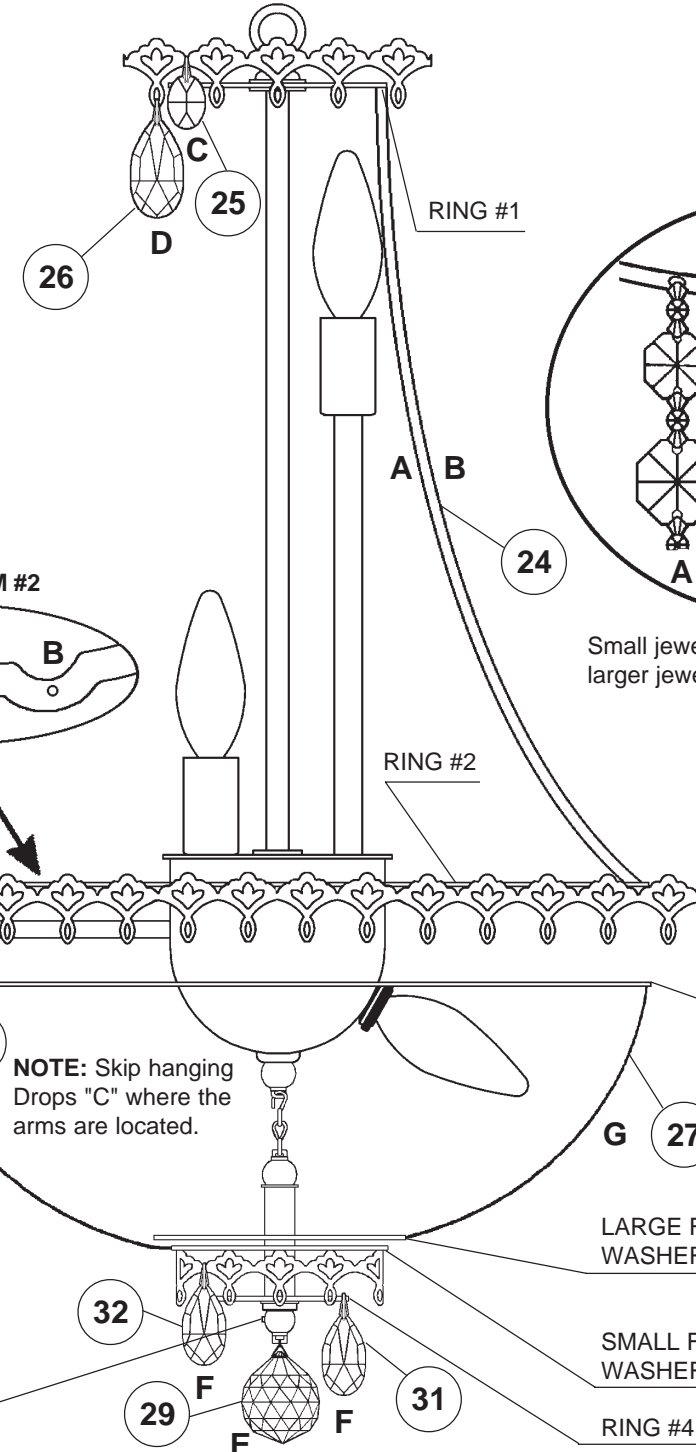


DIAGRAM #1



Small jewel at top and graduates to a
larger jewel toward bottom of chain.

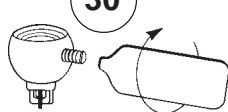


NOTE: Skip hanging
Drops "C" where the
arms are located.

RING #3

NOTE: Raise the large
finial washer for easier
installation of Chains "H".

30



Tighten With
Tool Provided.